

World's Best Workforce

Northfield Public Schools
Plan and Data Report
2014 -15

Components of WBWF

- ❑ All students ready for kindergarten
- ❑ All students in third grade achieving grade-level literacy
- ❑ Closing the achievement gaps
- ❑ All students career and college ready by graduation
- ❑ All students graduate
- ❑ School climate and student engagement

Northfield WBWF Metrics

Plan Component	Metric	Current Data
<u>All students are ready for Kindergarten</u>	Kindergarten Academic Benchmarks	Currently Underway Fall 2014 MAP Results
<u>All students reading at grade level by end of third grade</u>	Grade 3 MCA Scores	2014 Results
	Grade 3 MAP Scores	2014 Results
<u>Closing the Achievement Gap</u>	MCA Growth Scores	Reading Math
	MAP Test Growth Targets	Reading Math
	MMR and Focus Rating	2014 MMR Results 2014 FR Results
	Subgroup Growth	EL Reading EL Math FRP Reading FRP Math
	Subgroup Performance	EL Reading EL Math FRP Reading FRP Math

Plan Component	Metric	Current Data
<u>All students are career and college ready</u>	MAP Test Results	Reading Grade Level Results Math Grade Level Results
	MCA Test Results	Reading Math Science
	EXPLORE Test	2013 Results
	PLAN Test	2013 Results
	ACT Test	2013/2014 Results
	AP Test Results	College Board Report
<u>All students graduate</u>	Graduation Rate	MDE Graduation Rates
Climate and Student Engagement	Attendance Rates	MDE Attendance Rates
	Building Climate Surveys	Annual Survey Results

[Who uses this data?](#)

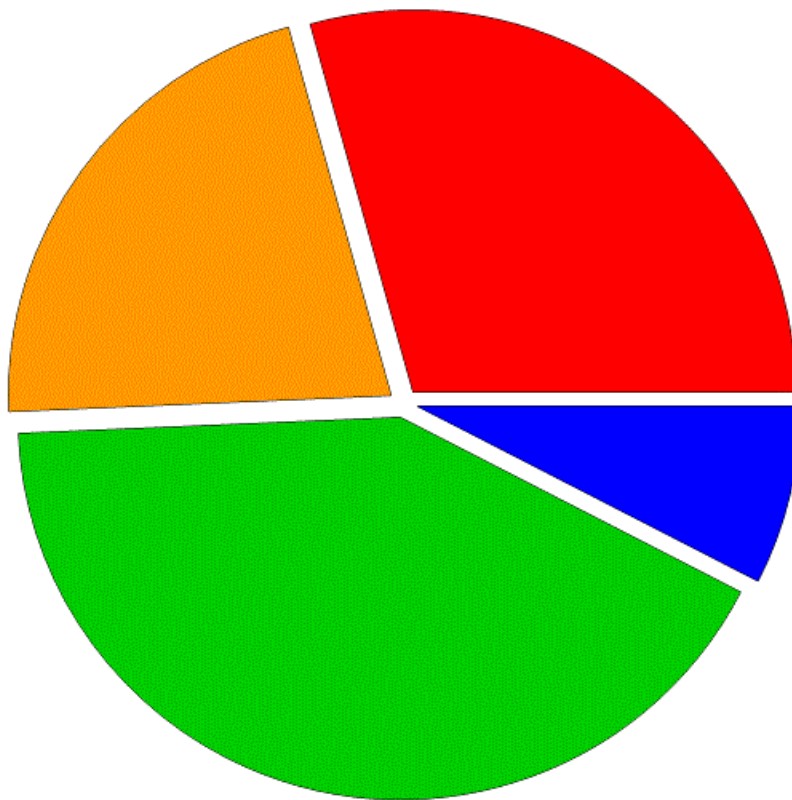
All Students Ready for Kindergarten

- IGDIs assessment for Hand in Hand students
- Northfield Kindergarten Academic Benchmarks
- Child at a Glance forms
- Carleton Study – currently underway
 - Identify impact of preschool experiences
 - Alignment of parent and teacher perception of student readiness

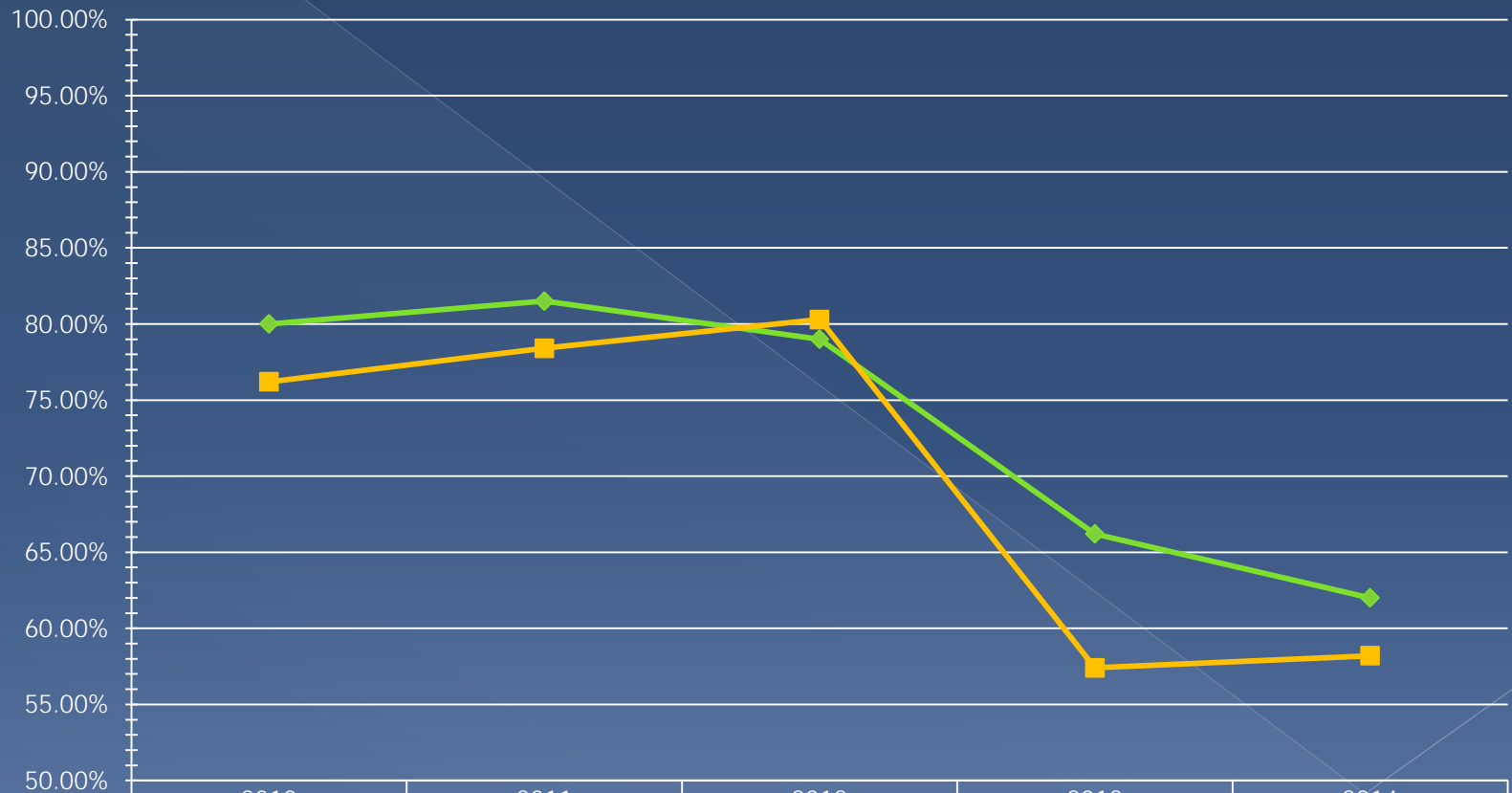
Kindergarten Fall 2014 MAP

Math Results

Selection		
95 - 99%ile	17	7.6%
61 - 94%ile	94	41.8%
41 - 60%ile	48	21.3%
0 - 40%ile	66	29.3%
Total	225	100.0%



2014 MCA Grade 3 Reading Proficiency Results



◆ Northfield
■ Minnesota

2010

2011

2012

2013

2014

80.00%

81.50%

79.00%

66.20%

62.00%

76.20%

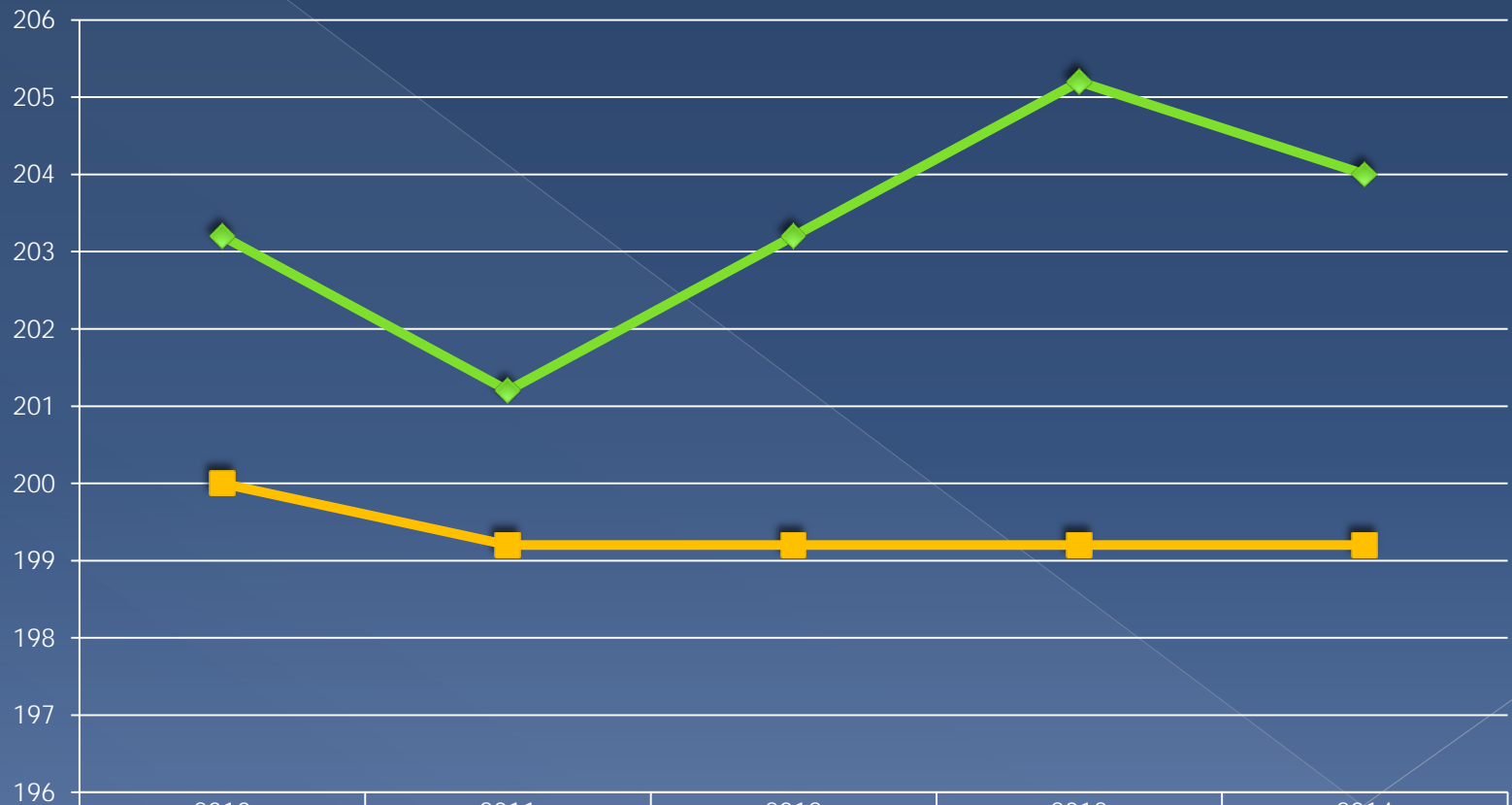
78.40%

80.30%

57.40%

58.20%

2014 Grade 3 MAP Reading Results



◆ District
■ National

2010

2011

2012

2013

2014

203.2

201.2

203.2

205.2

204.0

200

199.2

199.2

199.2

199.2

2014 MCA Reading Growth

Student Progress: Are students making expected growth? 

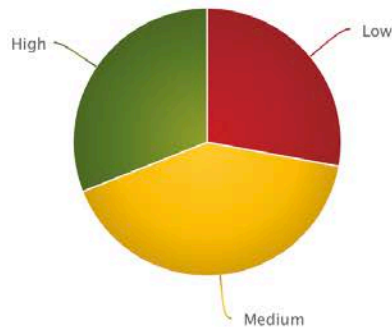
Statewide

Subject: Reading



+ Students "on track" for success

- 2013-2014 Student Growth, all students



Growth Level	Count	Percent
Low	95,206	27.9%
Medium	140,168	41.1%
High	105,577	31.0%

+ 2013-2014 Growth by last year's proficiency status, all students

+ School Contact Information



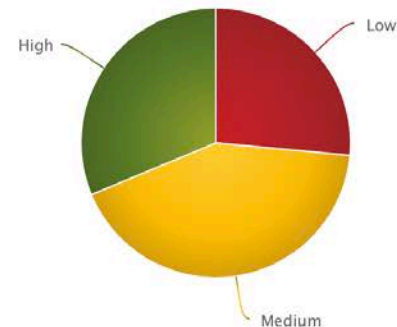
Northfield Public School District

Subject: Reading



+ Students "on track" for success

- 2013-2014 Student Growth, all students



Growth Level	Count	Percent
Low	435	26.5%
Medium	695	42.3%
High	514	31.3%

+ 2013-2014 Growth by last year's proficiency status, all students

+ School Contact Information

2014 MCA Math Growth

Student Progress: Are students making expected growth? 

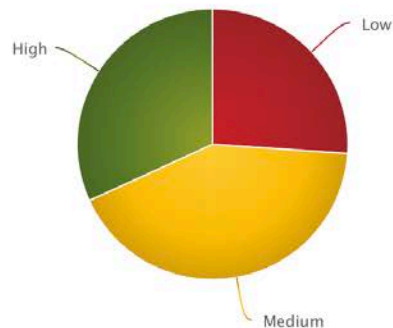
Statewide

Subject: Math



 Students "on track" for success

 2013-2014 Student Growth, all students



Growth Level	Count	Percent
Low	88,750	26.1%
Medium	143,197	42.1%
High	107,973	31.8%

 2013-2014 Growth by last year's proficiency status, all students

 School Contact Information



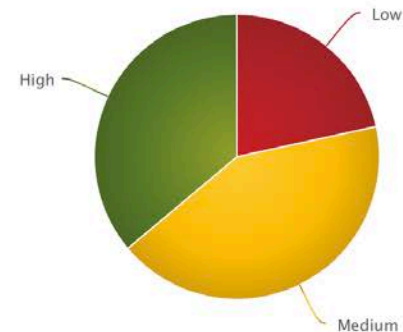
Northfield Public School District

Subject: Math



 Students "on track" for success

 2013-2014 Student Growth, all students



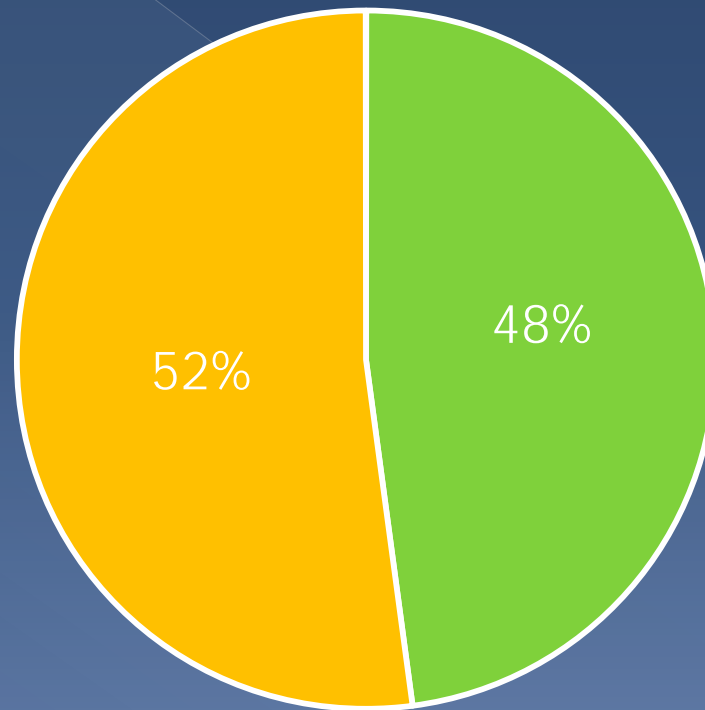
Growth Level	Count	Percent
Low	353	21.6%
Medium	691	42.3%
High	590	36.1%

 2013-2014 Growth by last year's proficiency status, all students

 School Contact Information

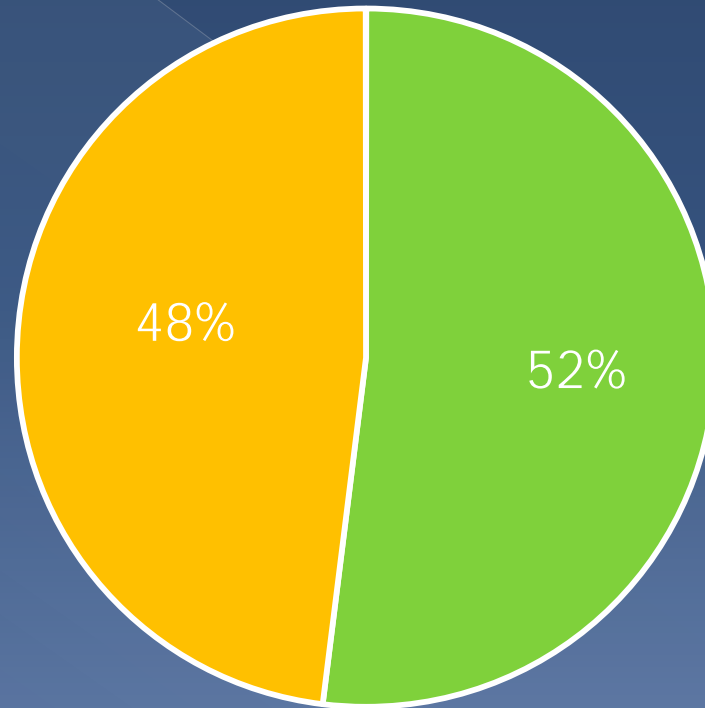
MAP Reading Growth Spring 2013 to Spring 2014

■ Met Growth ■ Below Growth

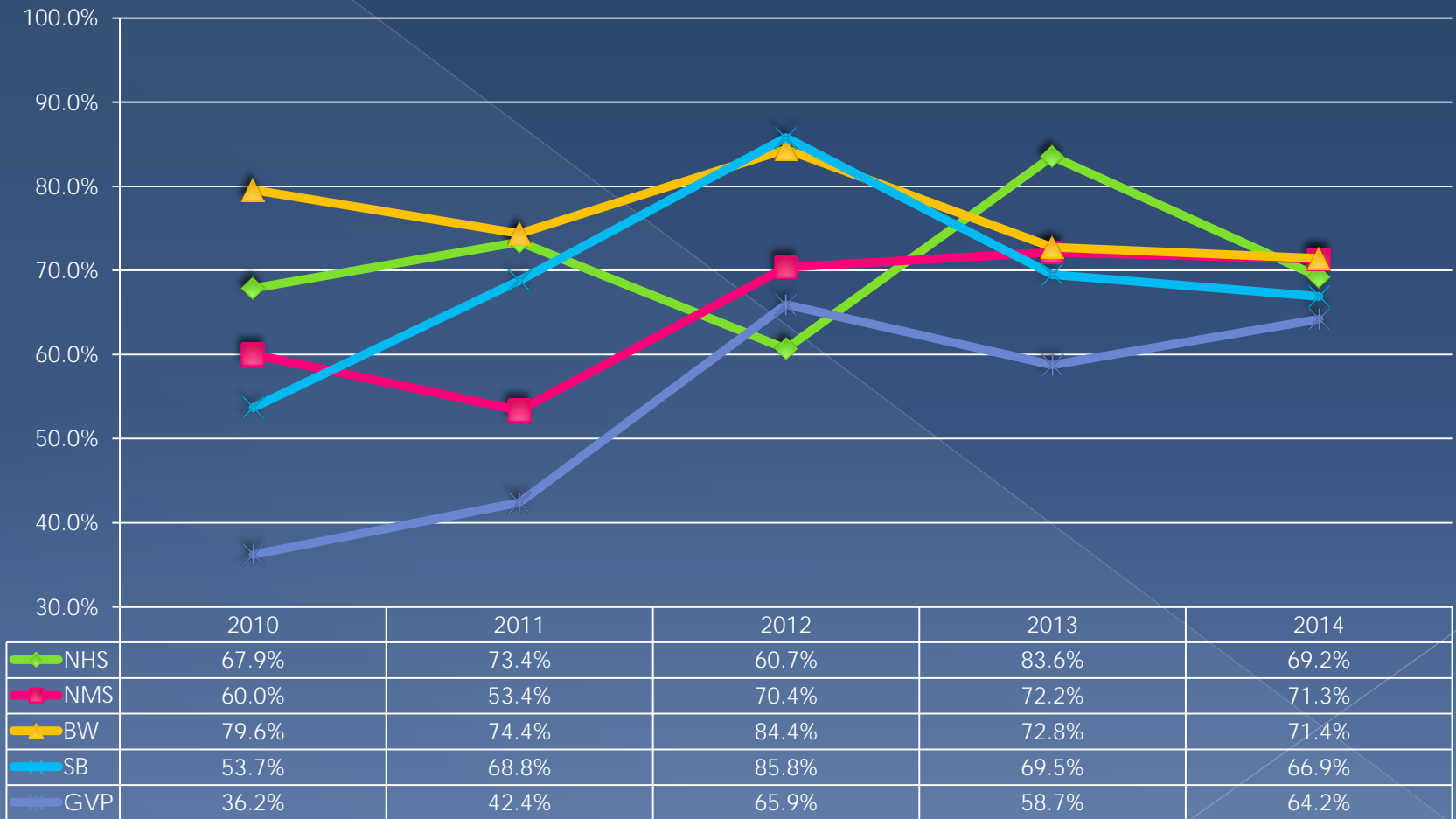


MAP Math Growth Spring 2013 to Spring 2014

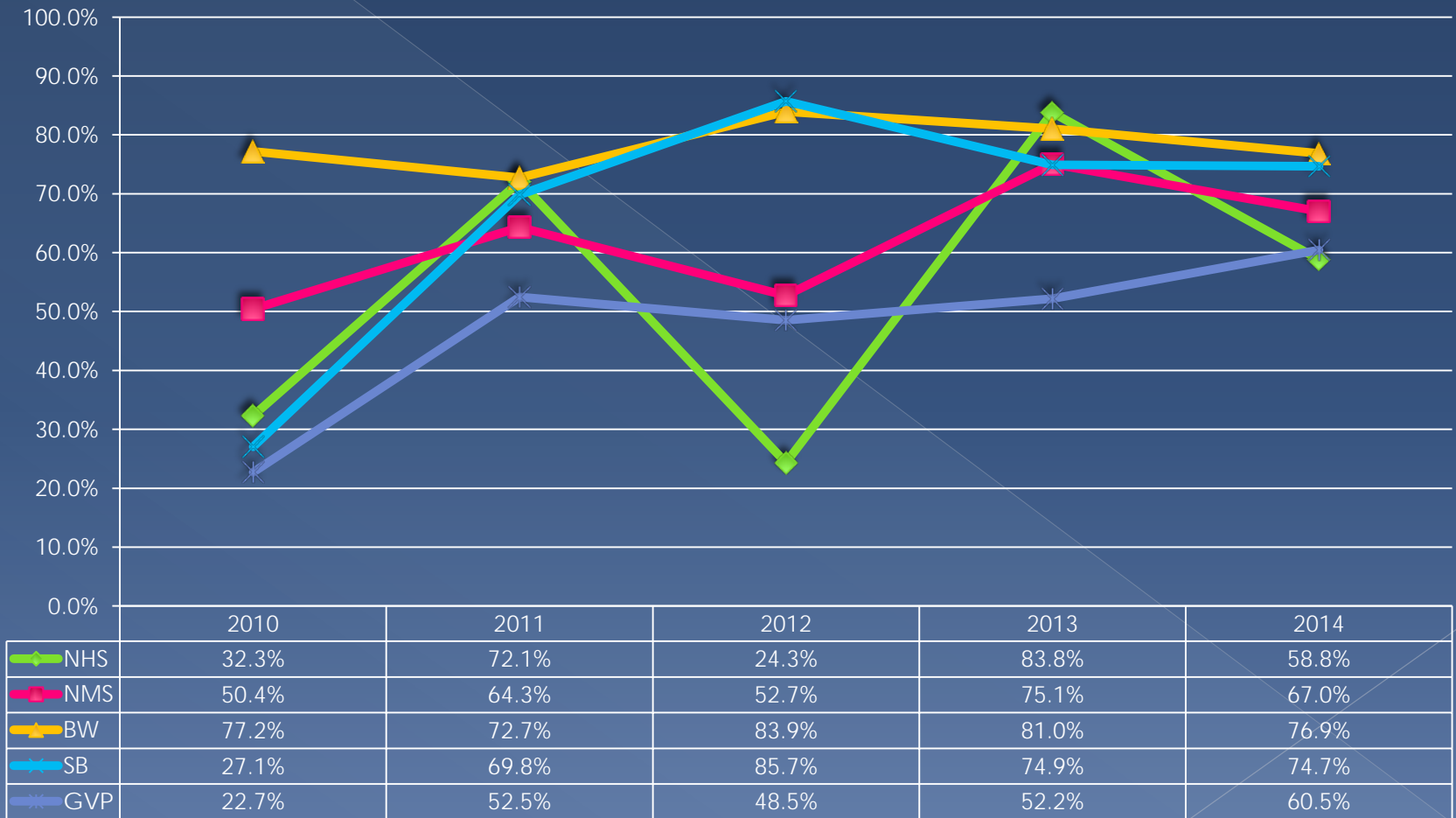
■ Met Growth ■ Below Growth



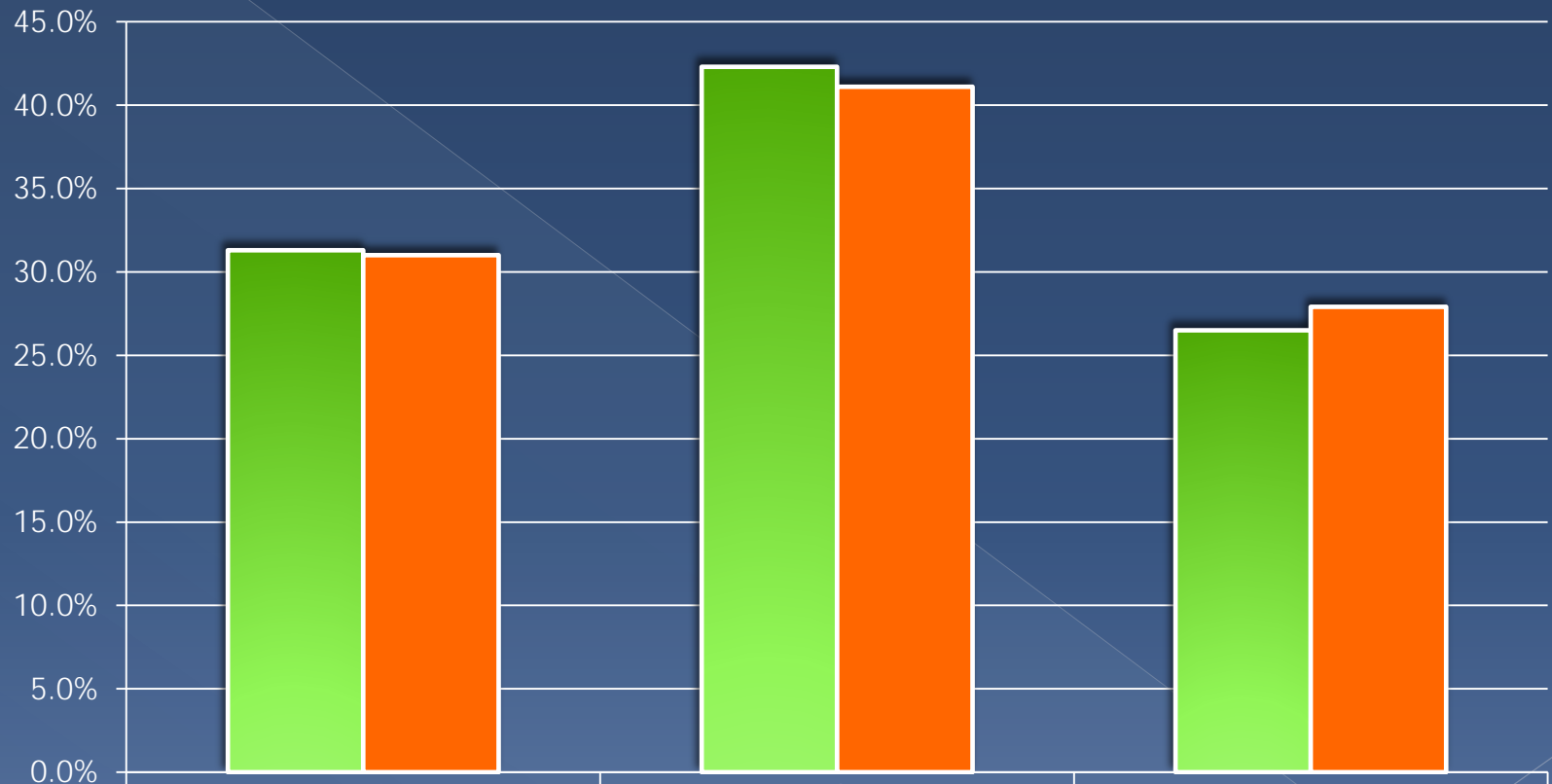
MMR Rating Trend



Focus Rating Trend

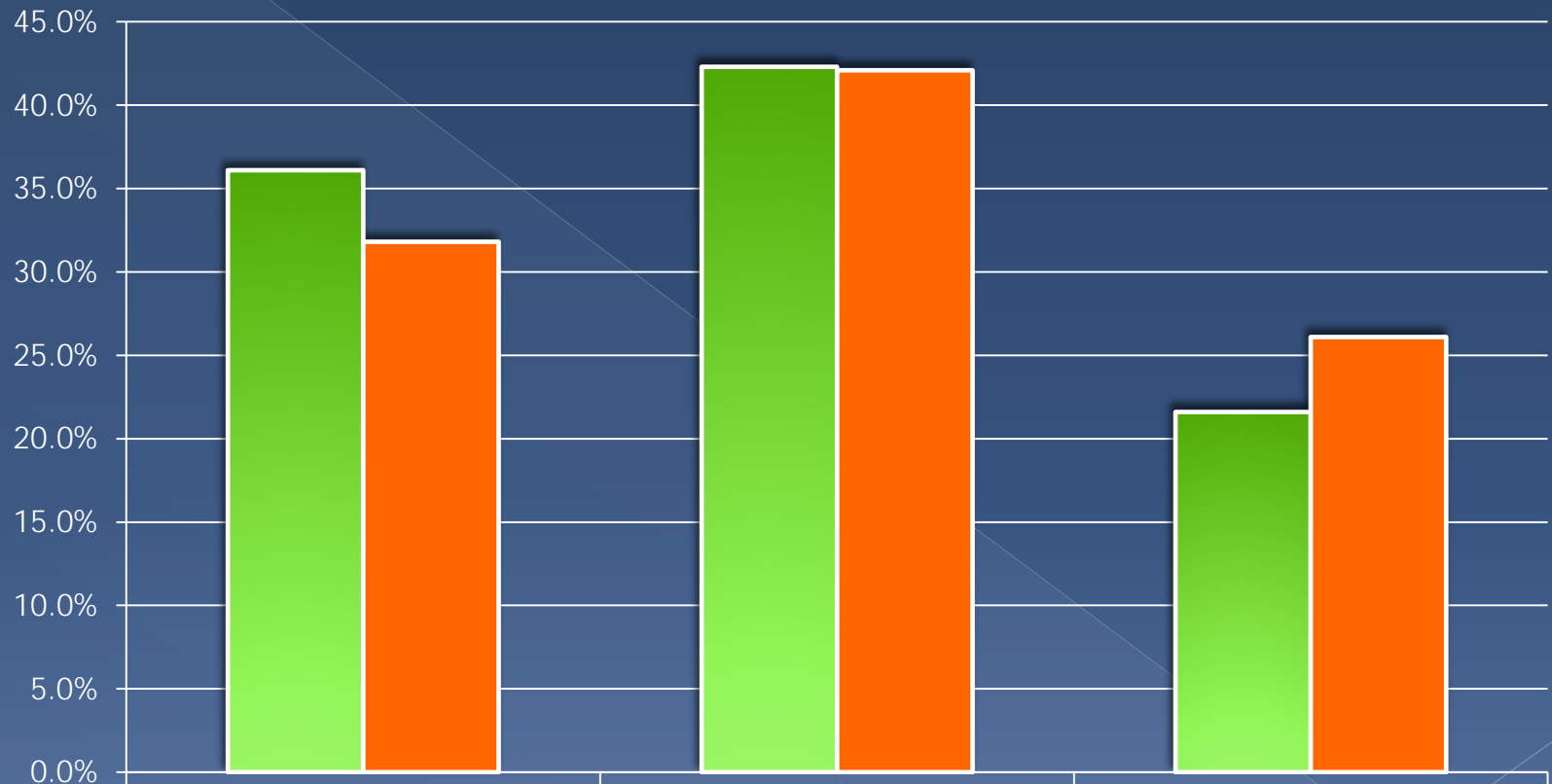


EL 2014 MCA Reading Growth



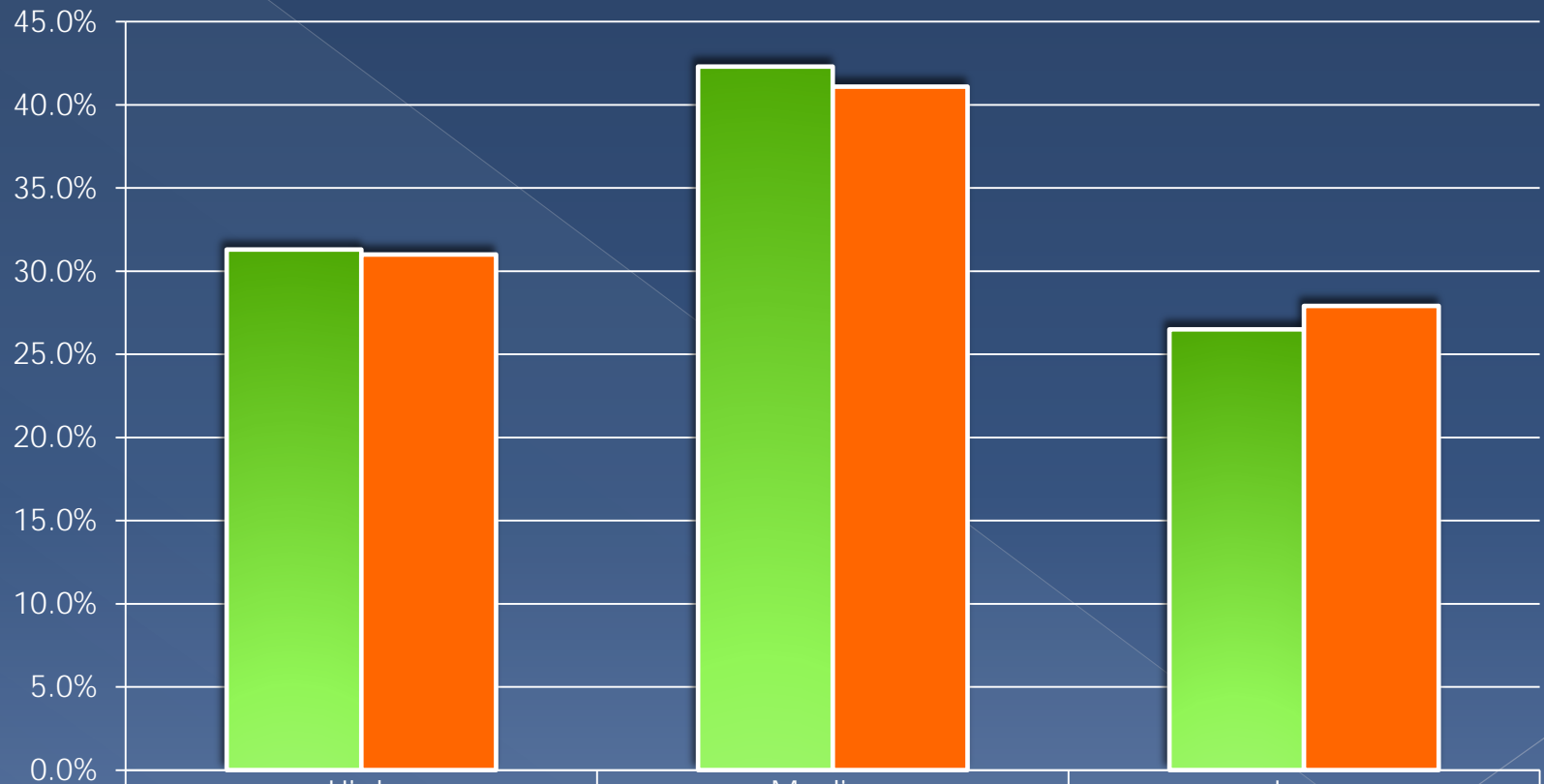
■ Northfield	31.3%	42.3%	26.5%
■ State	31.0%	41.1%	27.9%

EL 2014 MCA Math Growth



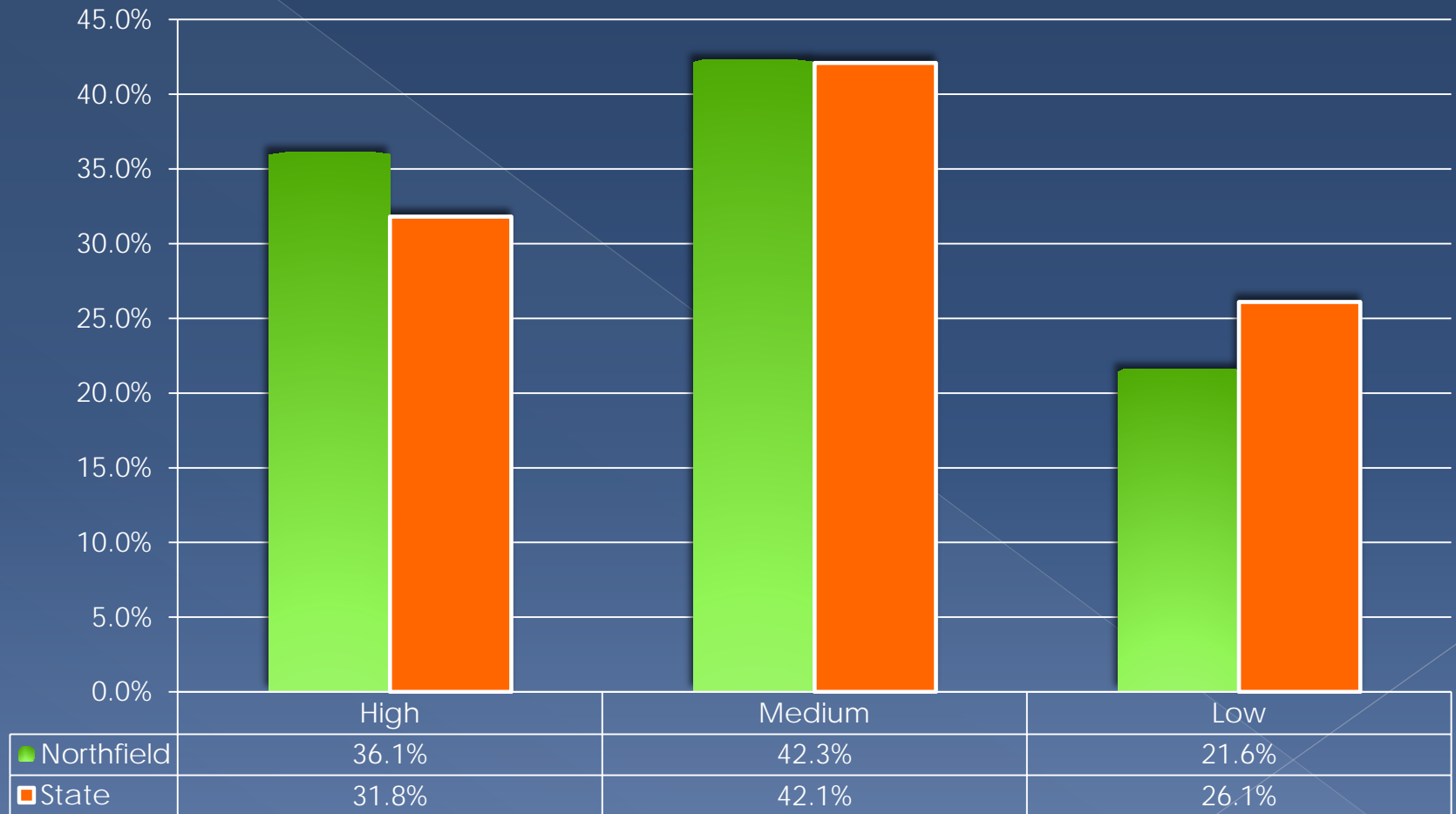
■ Northfield	High	Medium	Low
	36.1%	42.3%	21.6%
■ State	31.8%	42.1%	26.1%

FRP 2014 MCA Reading Growth

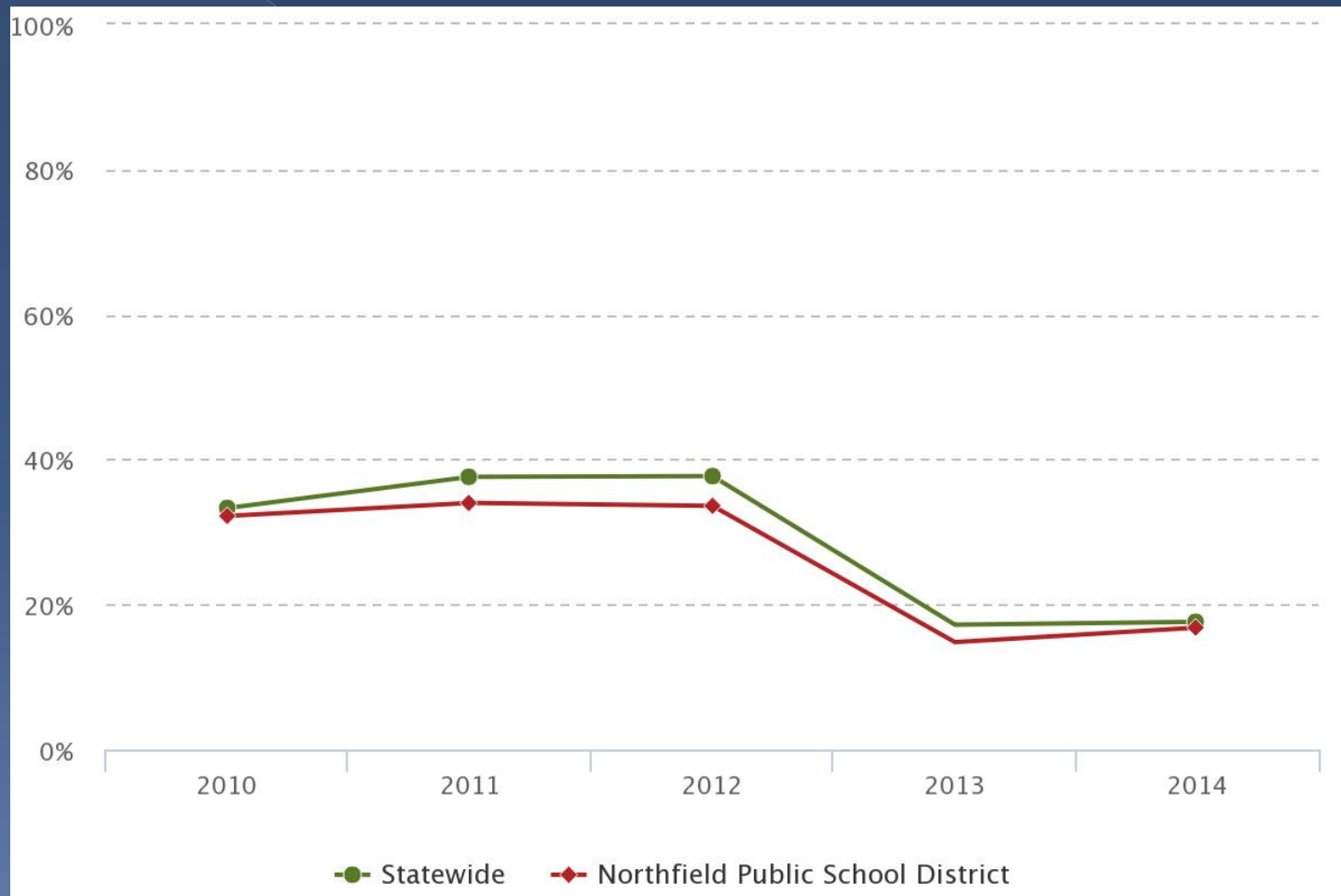


■ Northfield	31.3%	42.3%	26.5%
■ State	31.0%	41.1%	27.9%

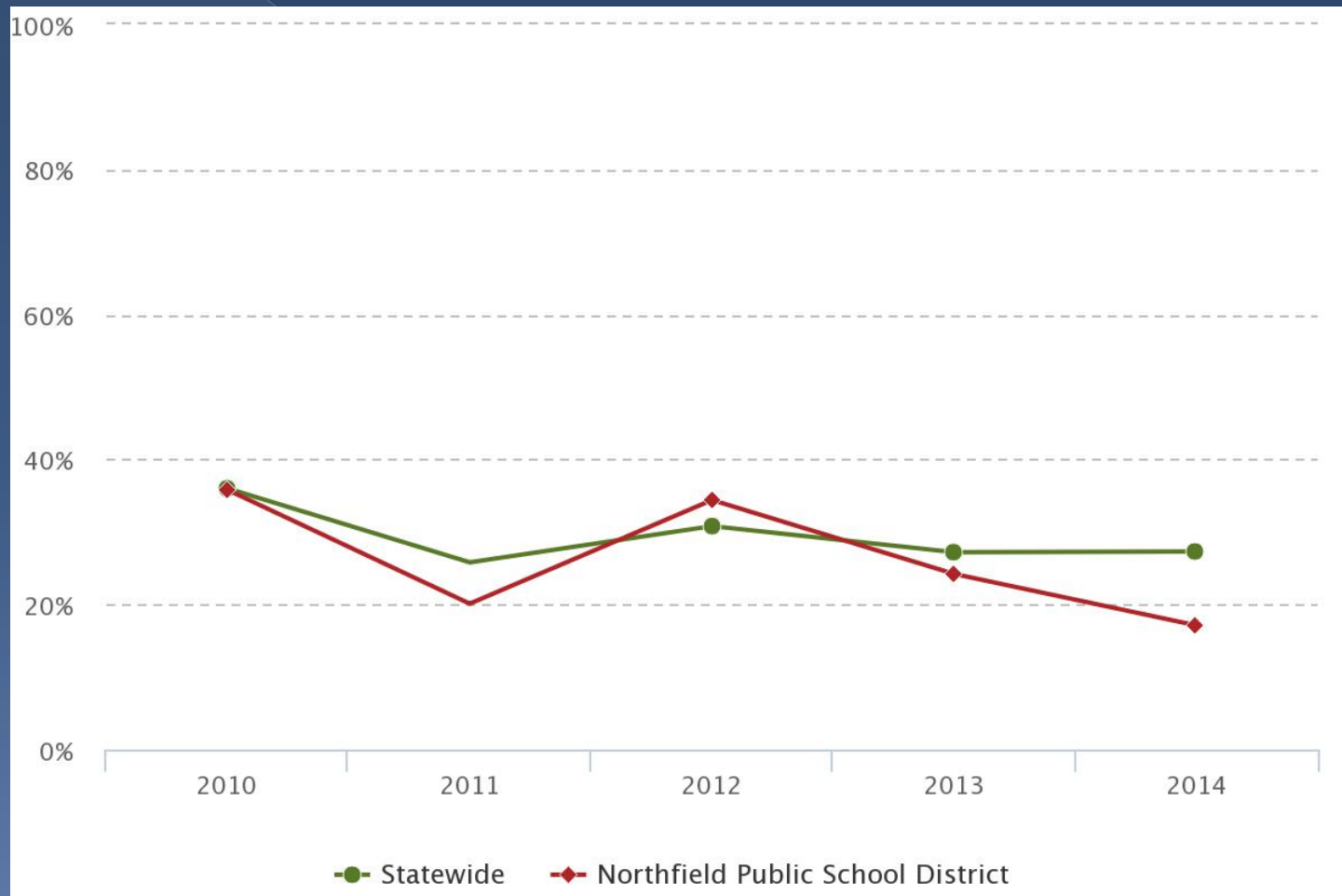
FRP 2014 MCA Math Growth



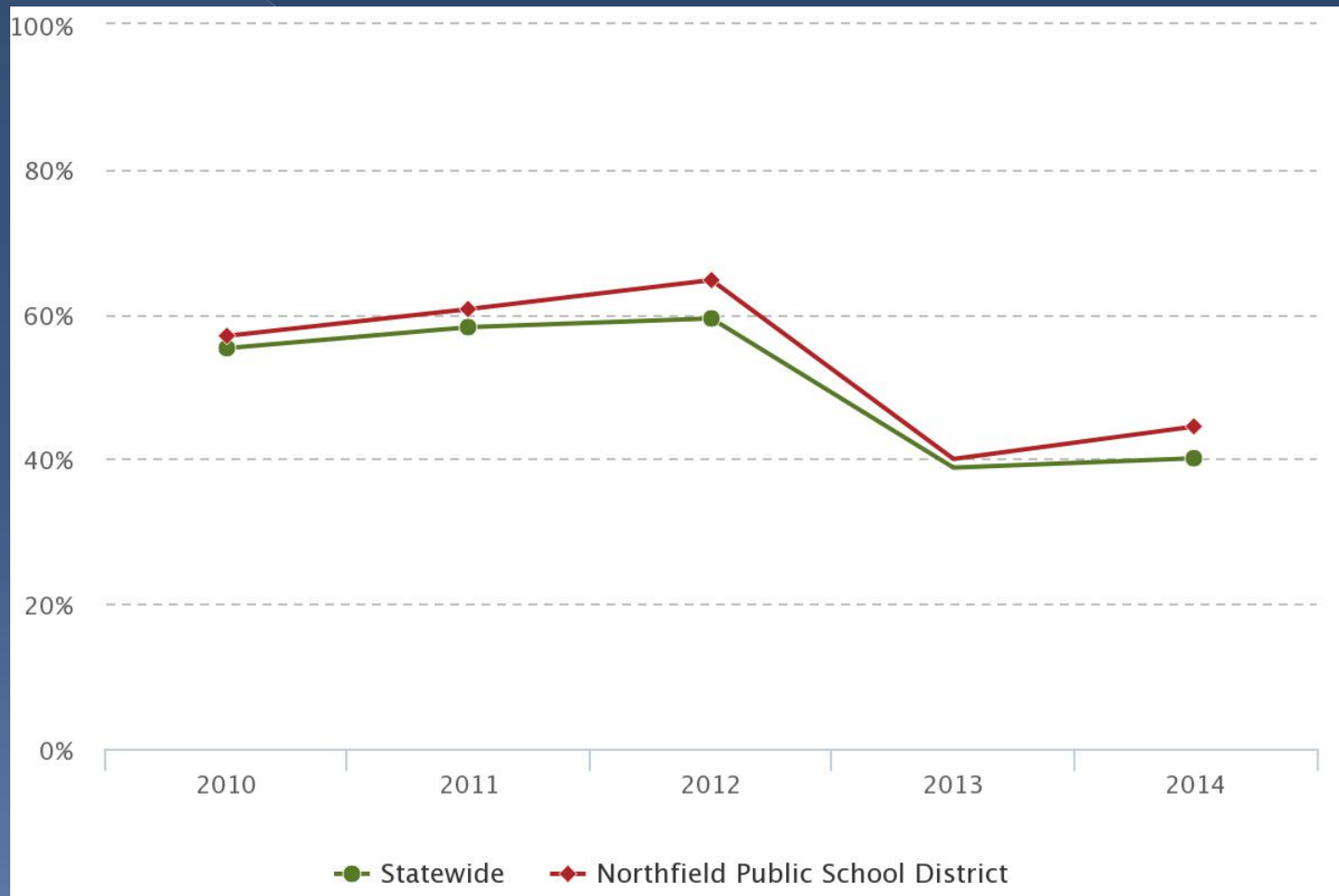
English Learners 2014 MCA Reading Proficiency Rate



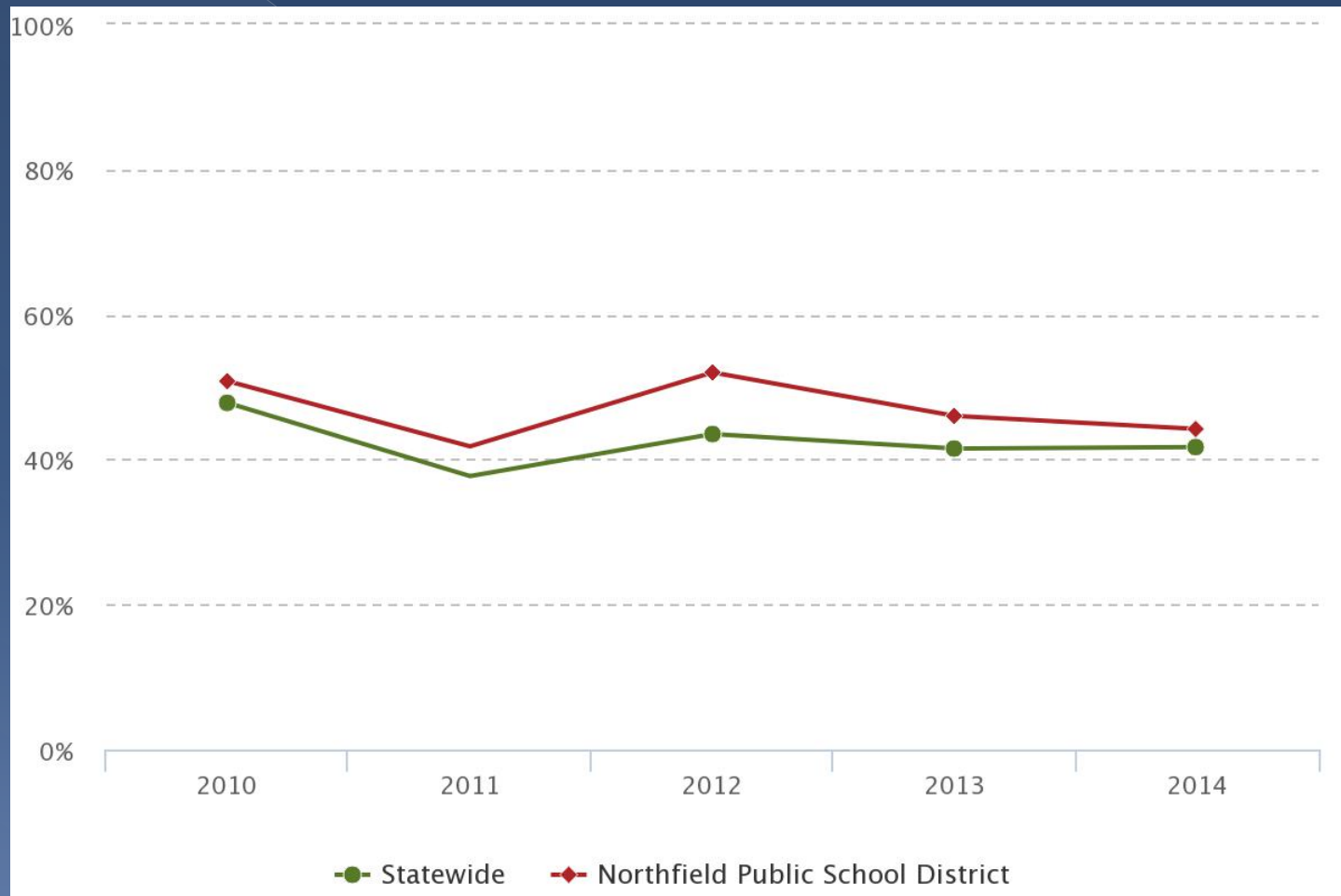
English Learners 2014 MCA Math Proficiency Rate



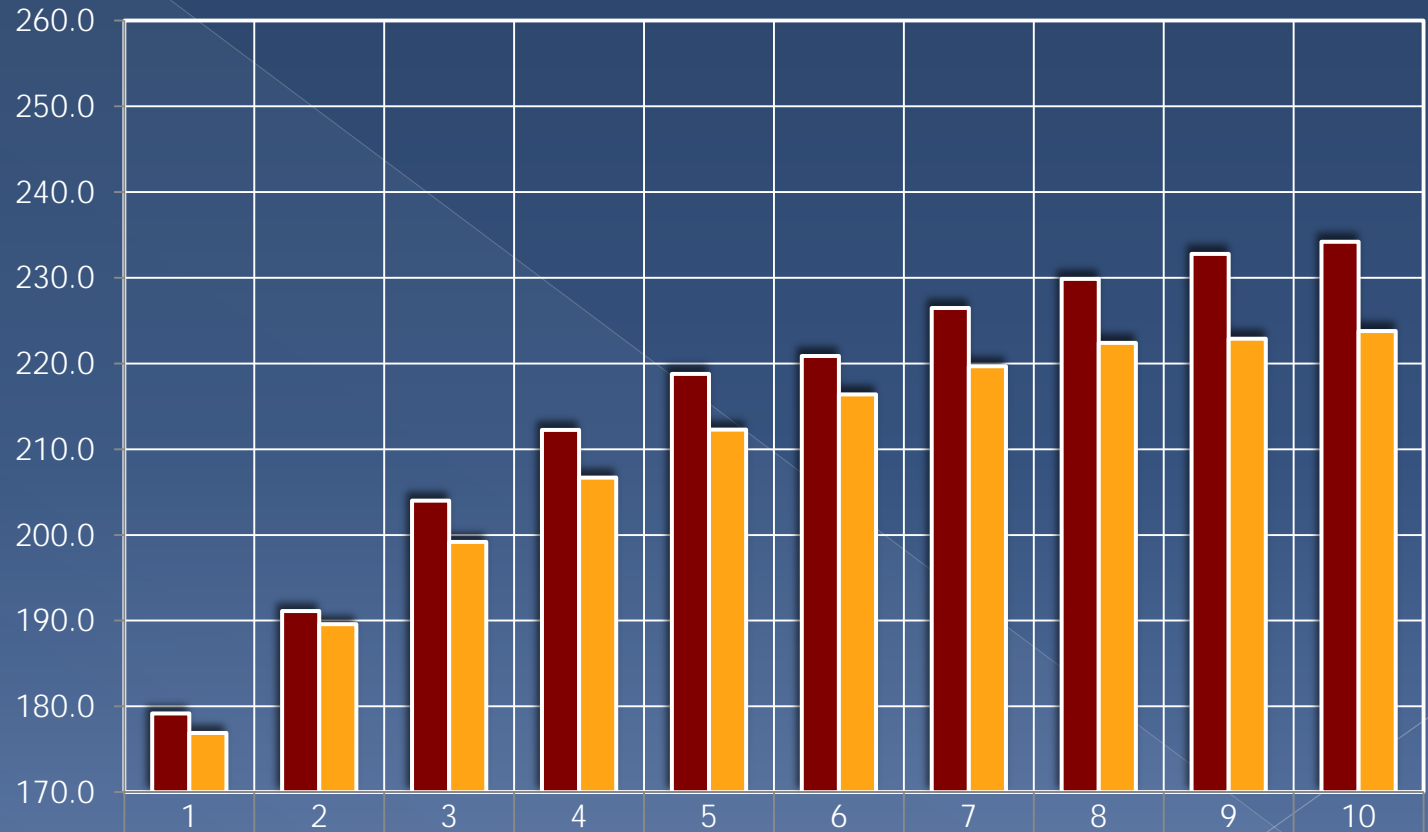
FRP 2014 MCA Reading Proficiency Rate



FRP 2014 MCA Math Proficiency Rate

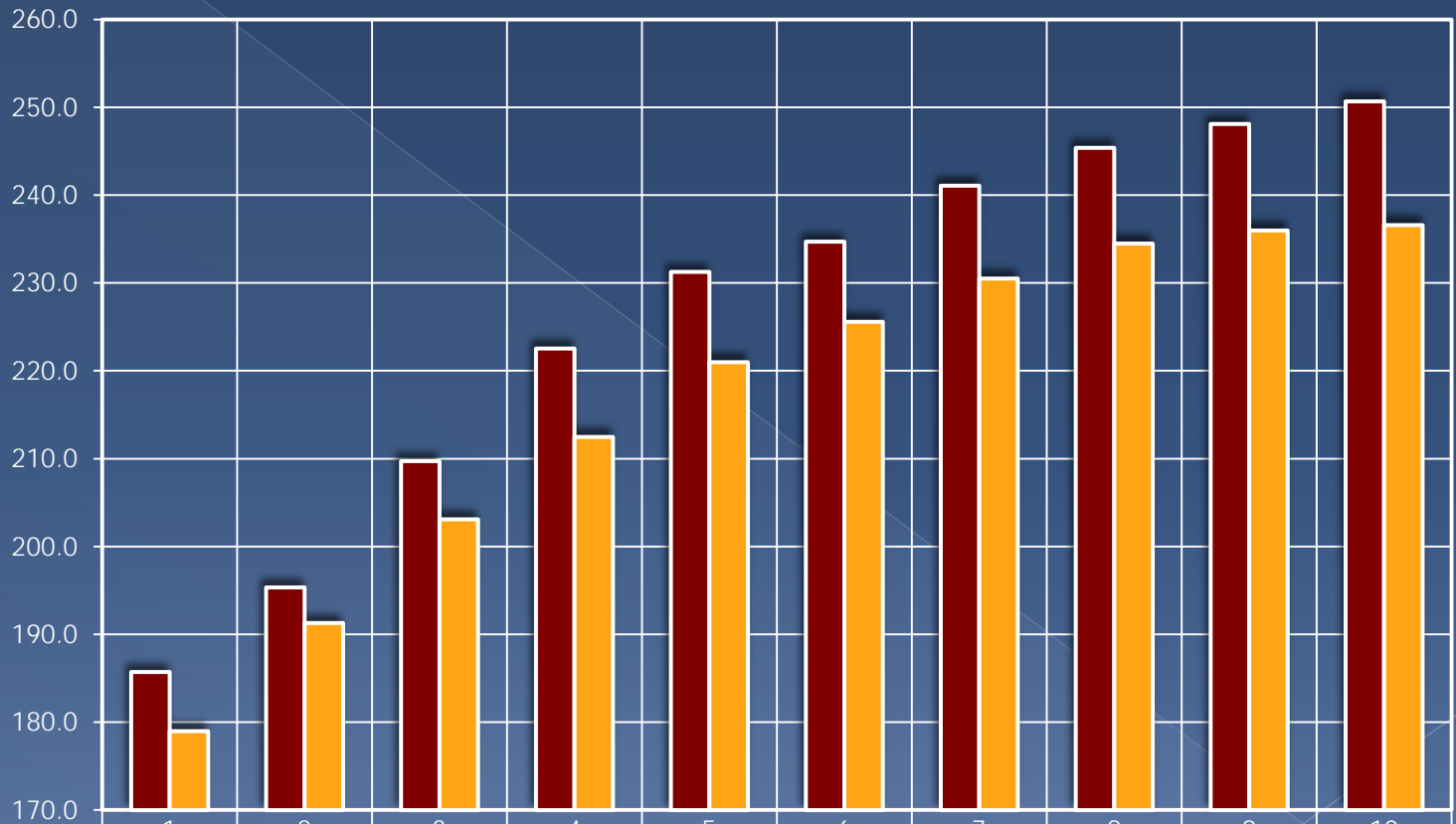


MAP Reading Results by Grade Level



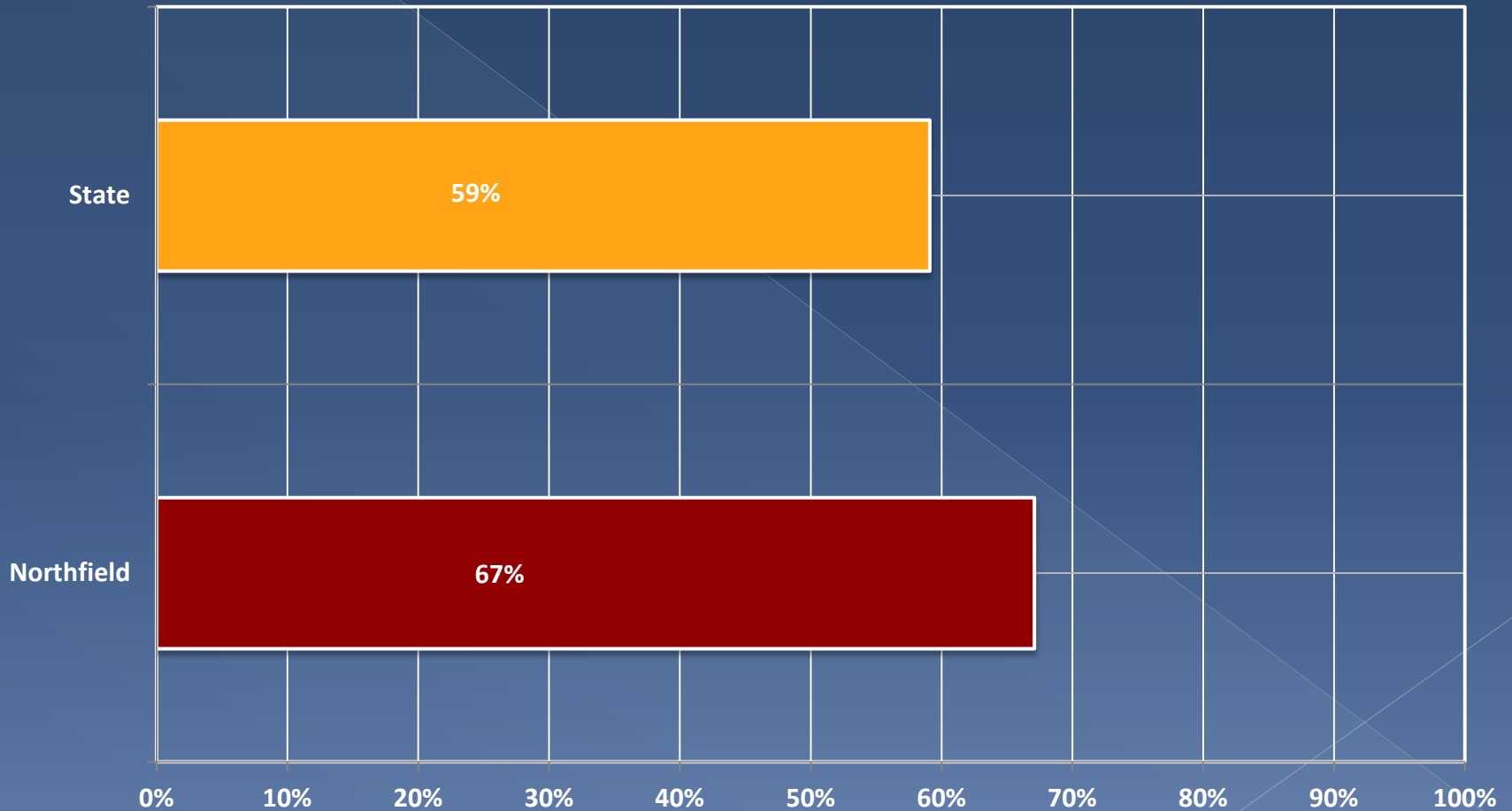
District Mean 2014	179.2	191.1	204.0	212.3	218.8	220.9	226.5	229.9	232.8	234.2
National Mean 2014	176.9	189.6	199.2	206.7	212.3	216.4	219.7	222.4	222.9	223.8

MAP Math Results by Grade Level

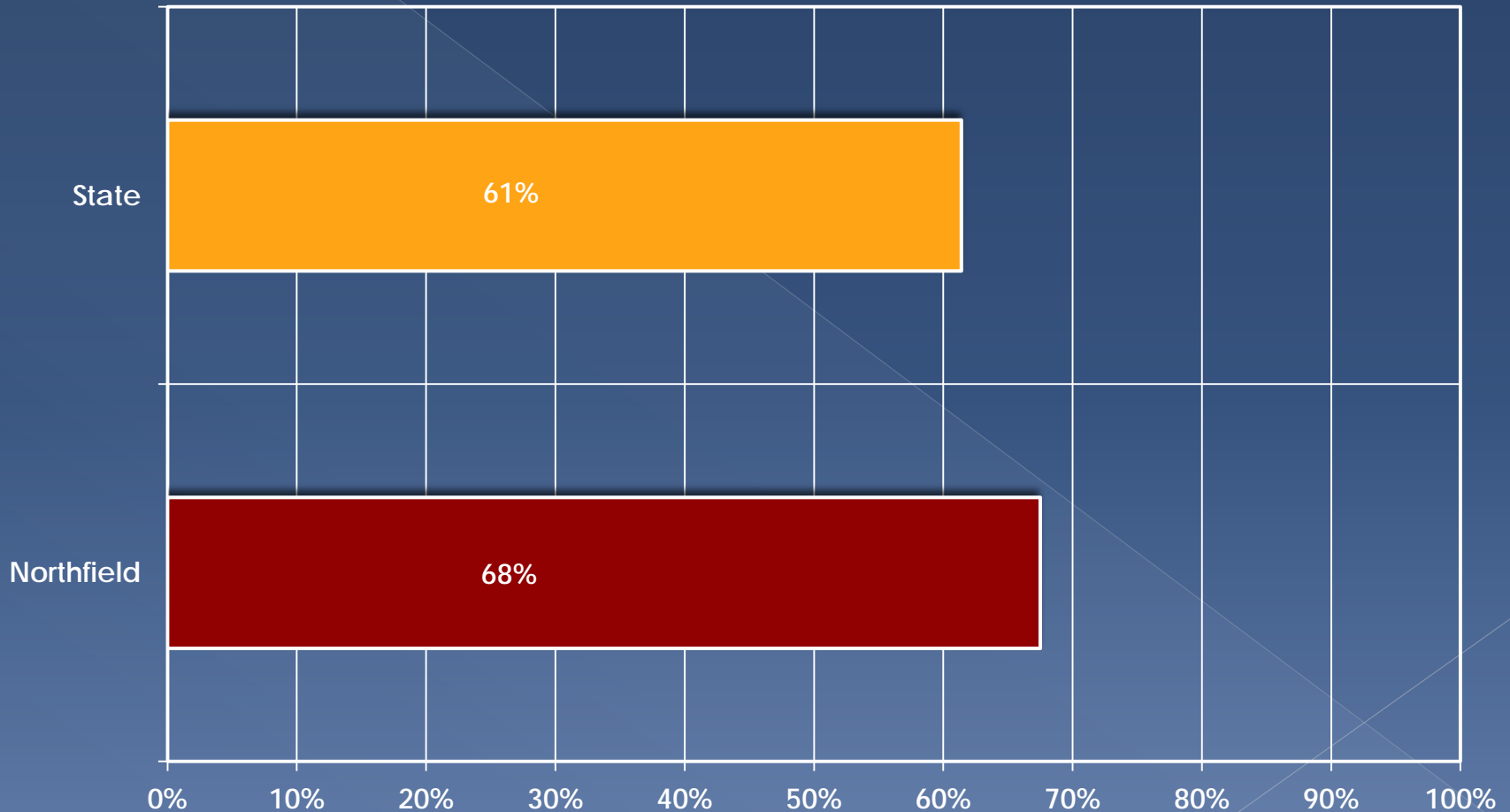


■ District Mean 2014	185.7	195.4	209.7	222.6	231.3	234.7	241.1	245.4	248.1	250.7
■ National Mean 2014	179	191.3	203.1	212.5	221	225.6	230.5	234.5	236	236.6

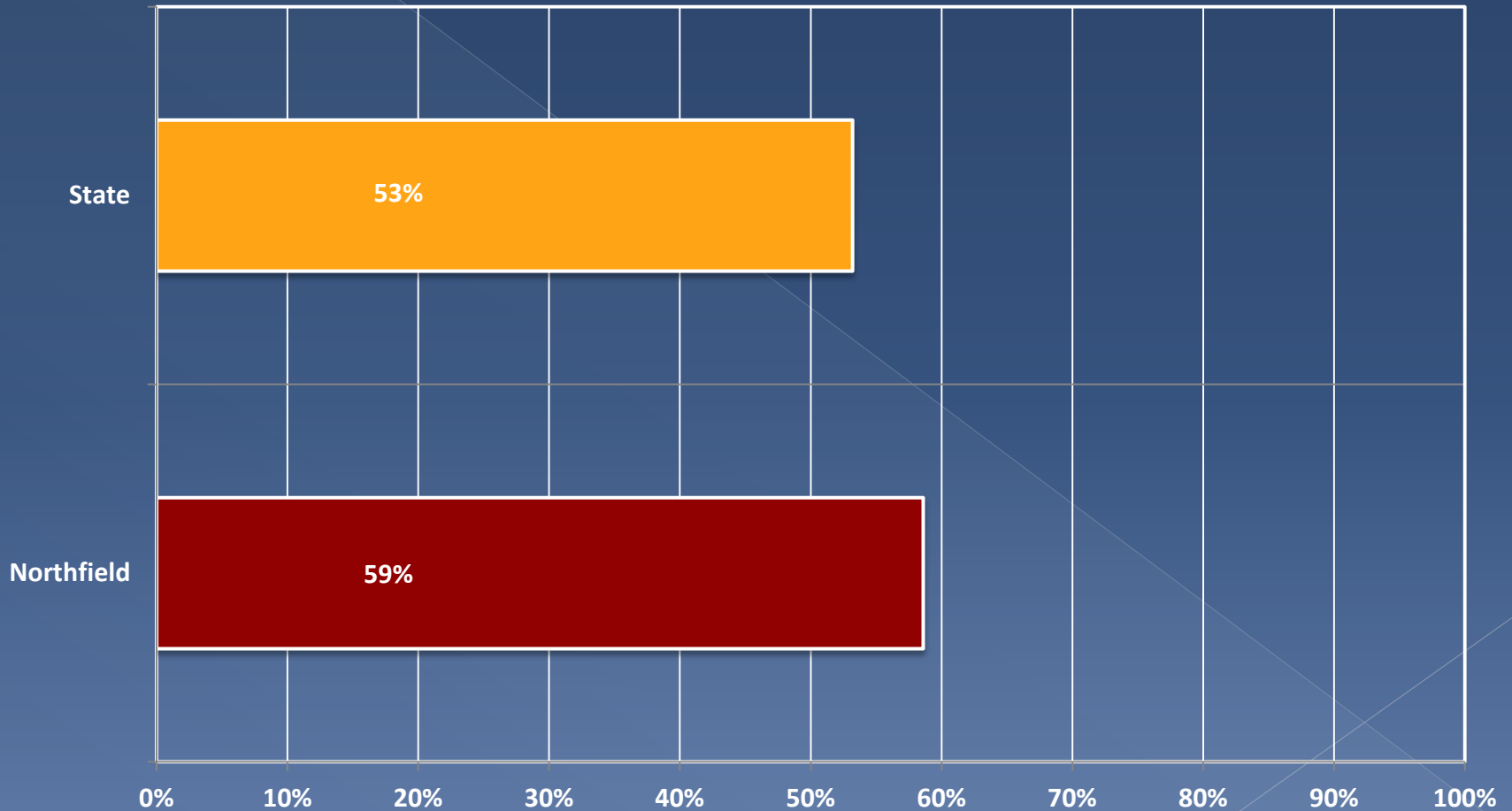
2014 MCA Reading Proficiency Rate



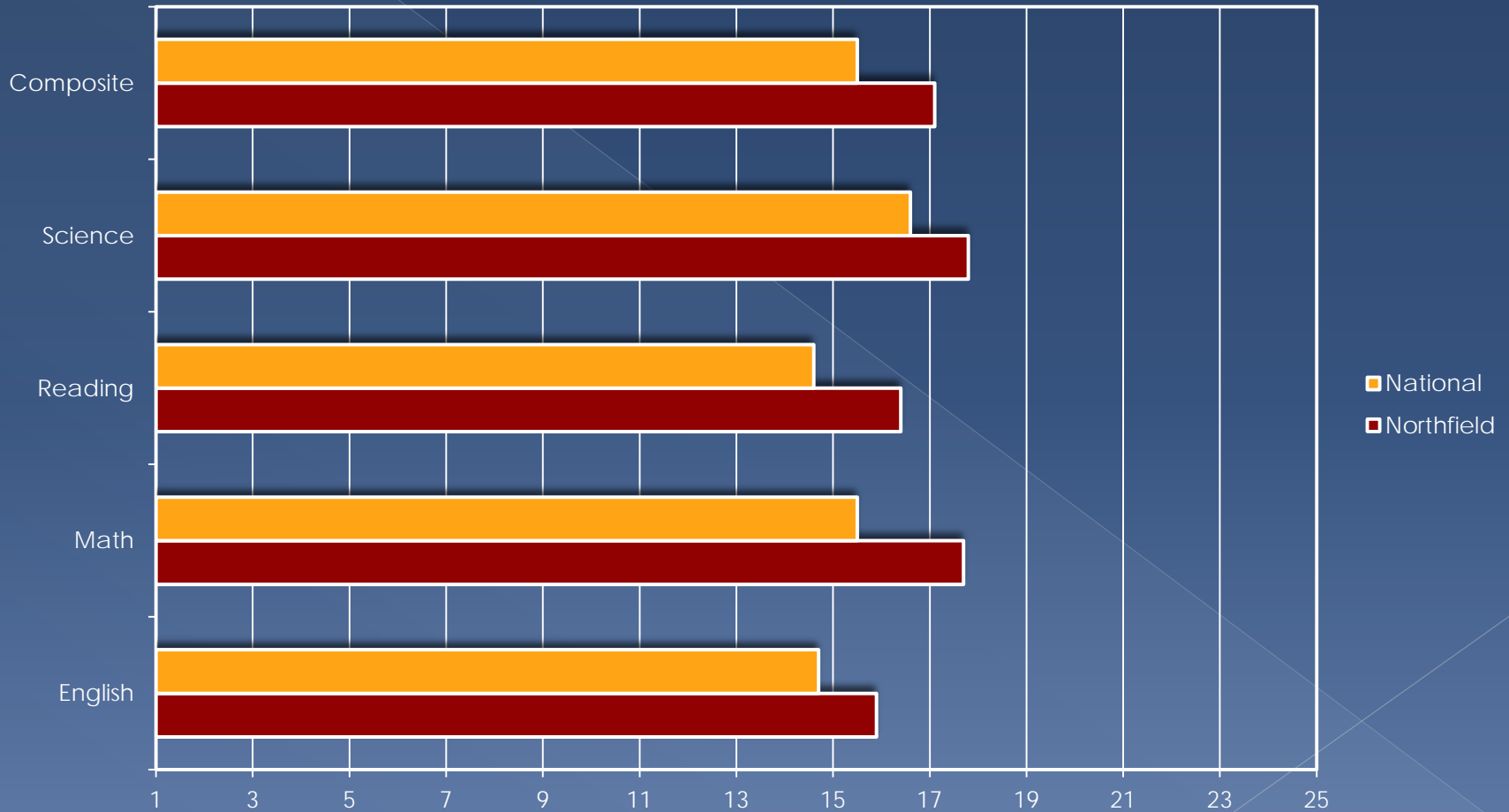
2014 MCA Math Proficiency Rate



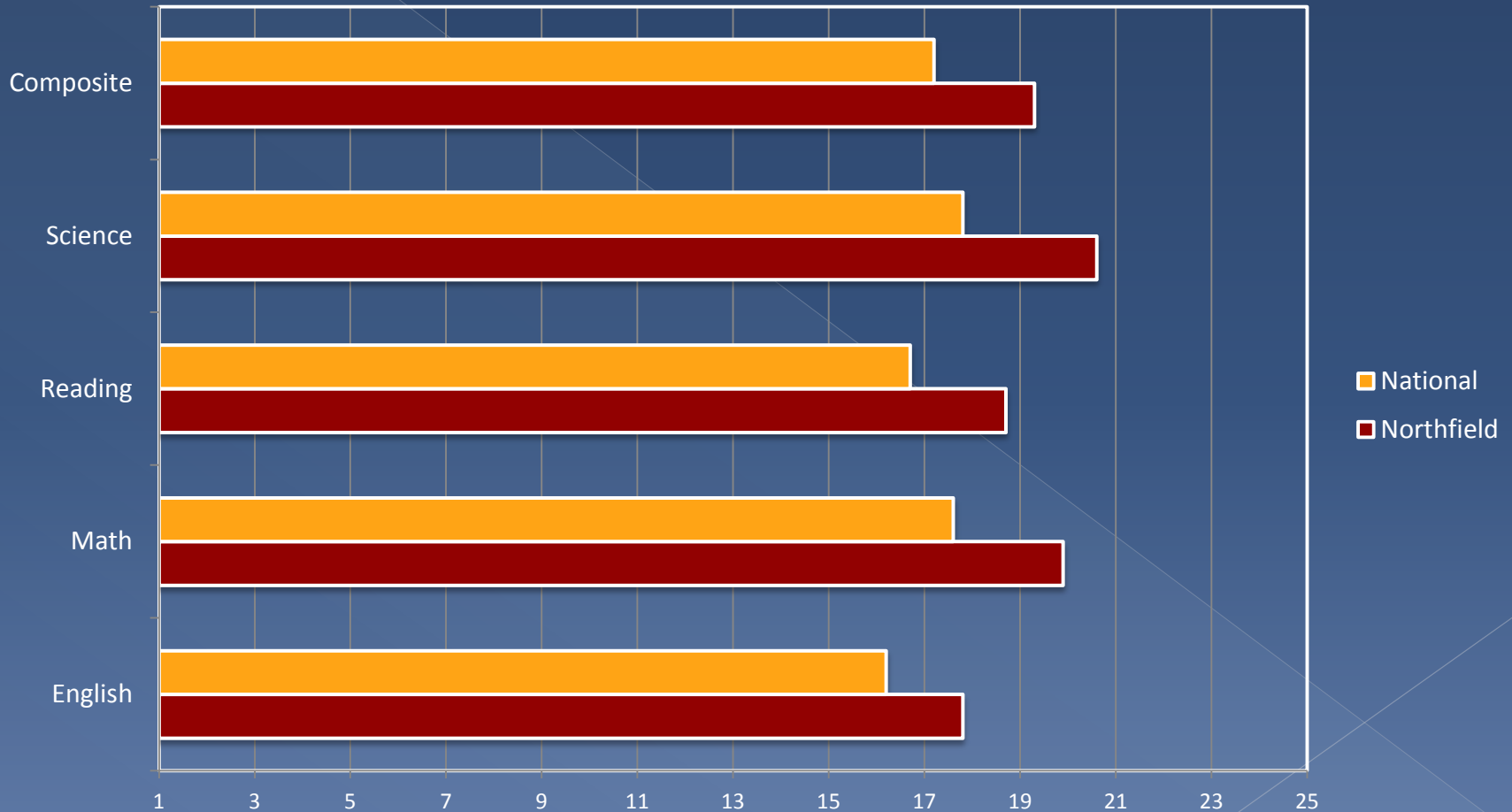
2014 MCA Science Proficiency Rate



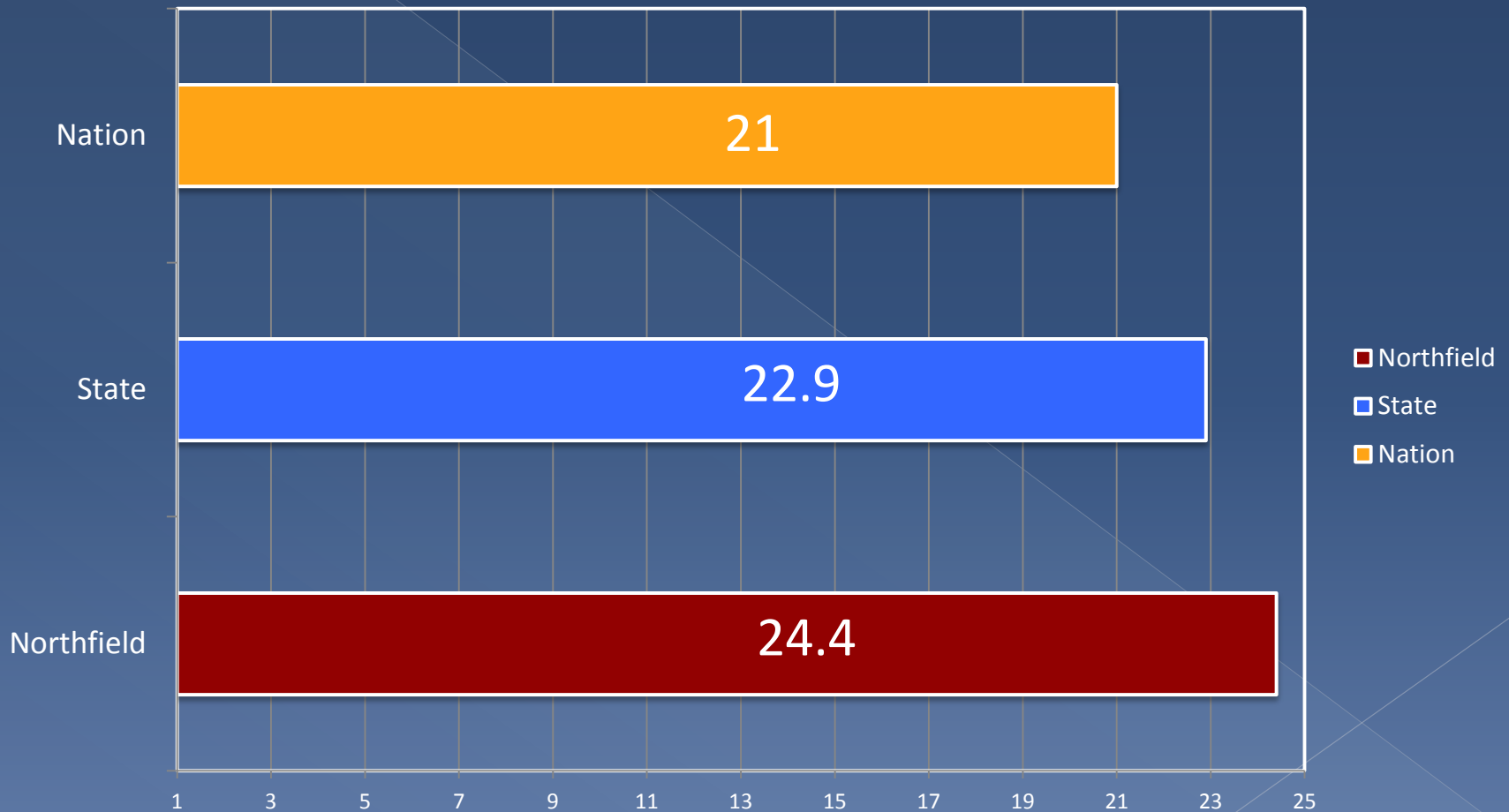
2013 EXPLORE Test Results



2013 PLAN Test Results

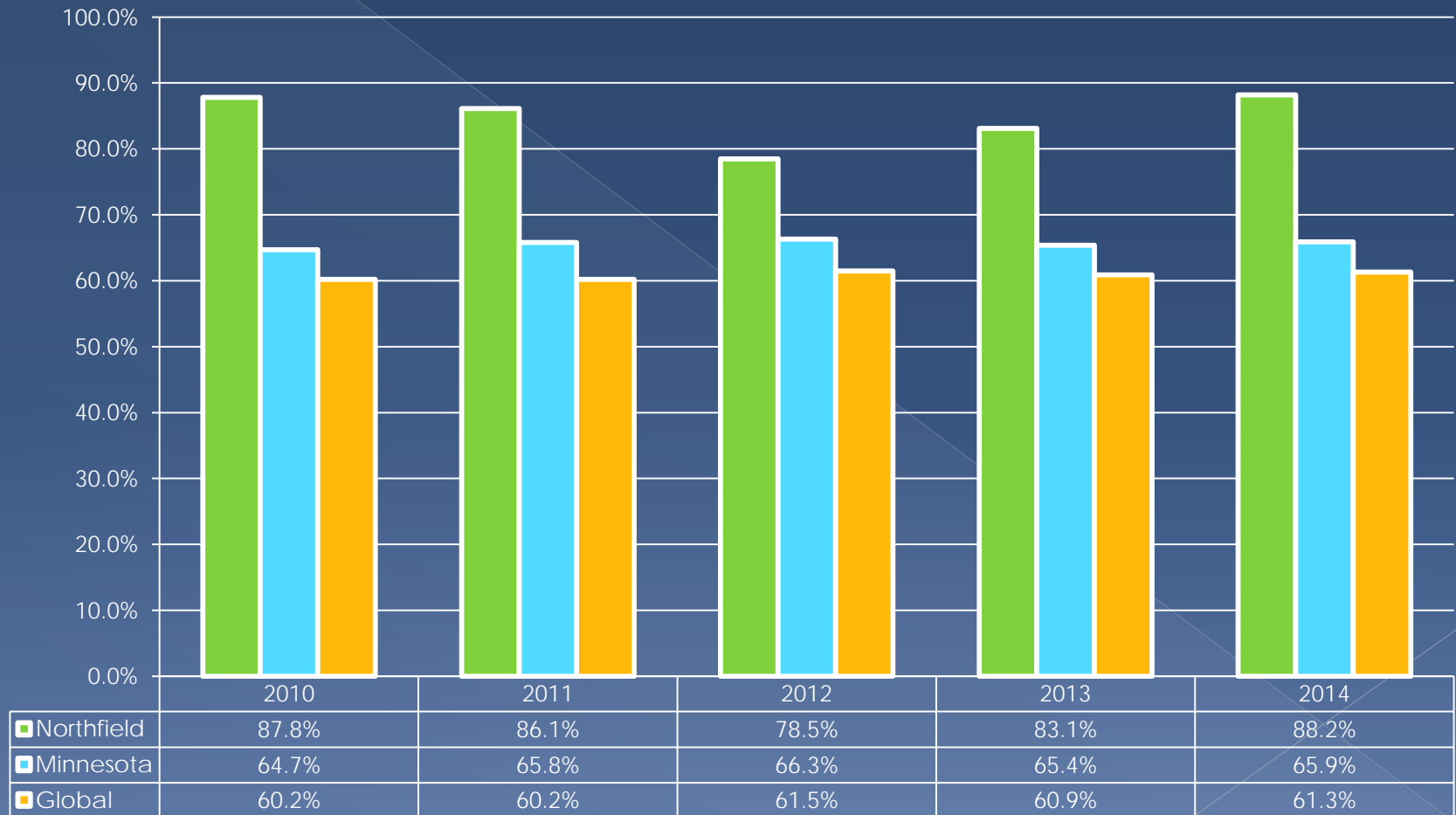


2013/2014 ACT Results

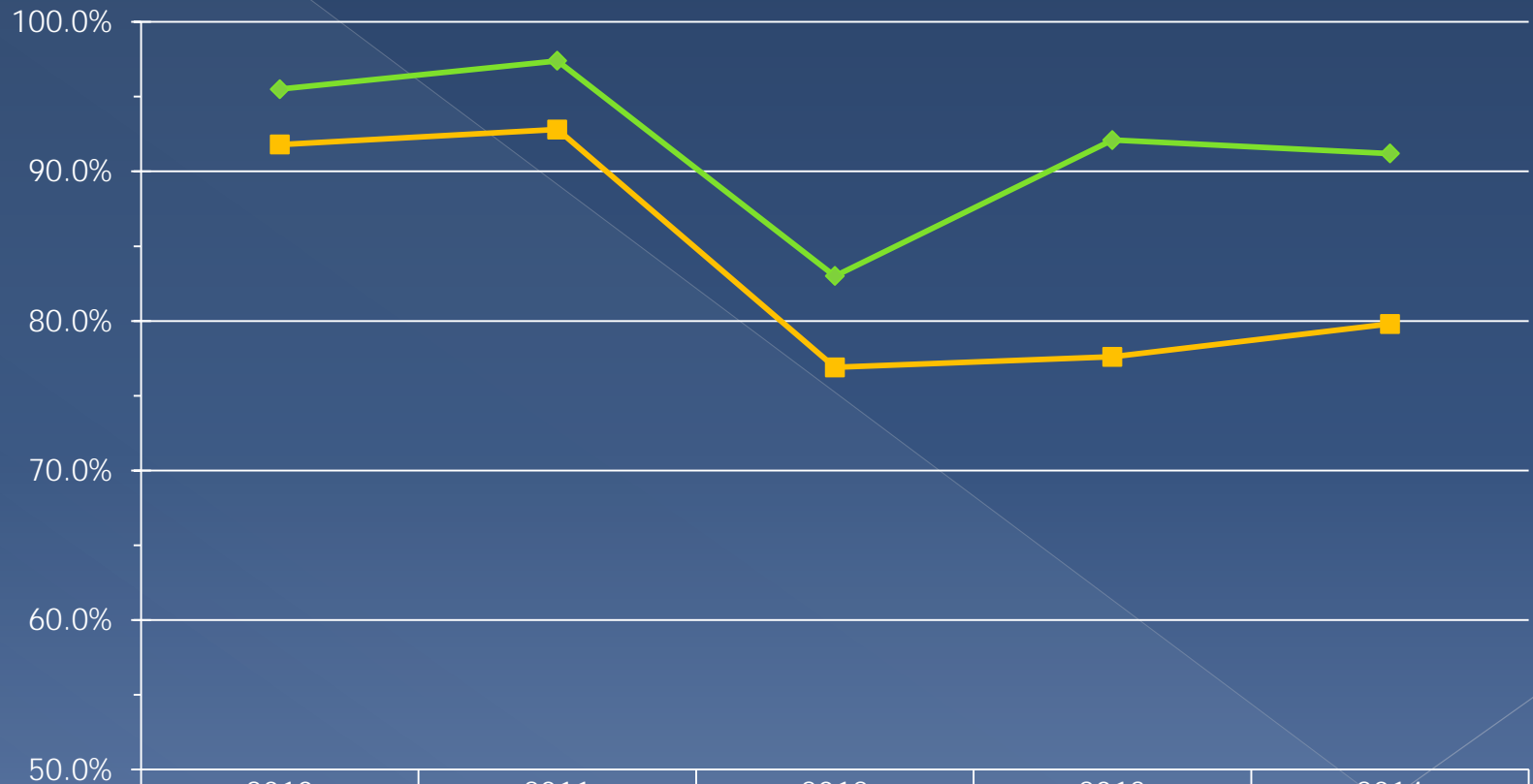


Northfield High School AP Test Trends

Percentage of Students with Scores 3+



Northfield Public Schools Graduation Trends



◆ Northfield
■ State

2010

2011

2012

2013

2014

95.5%

97.4%

83.0%

92.1%

91.2%

91.8%

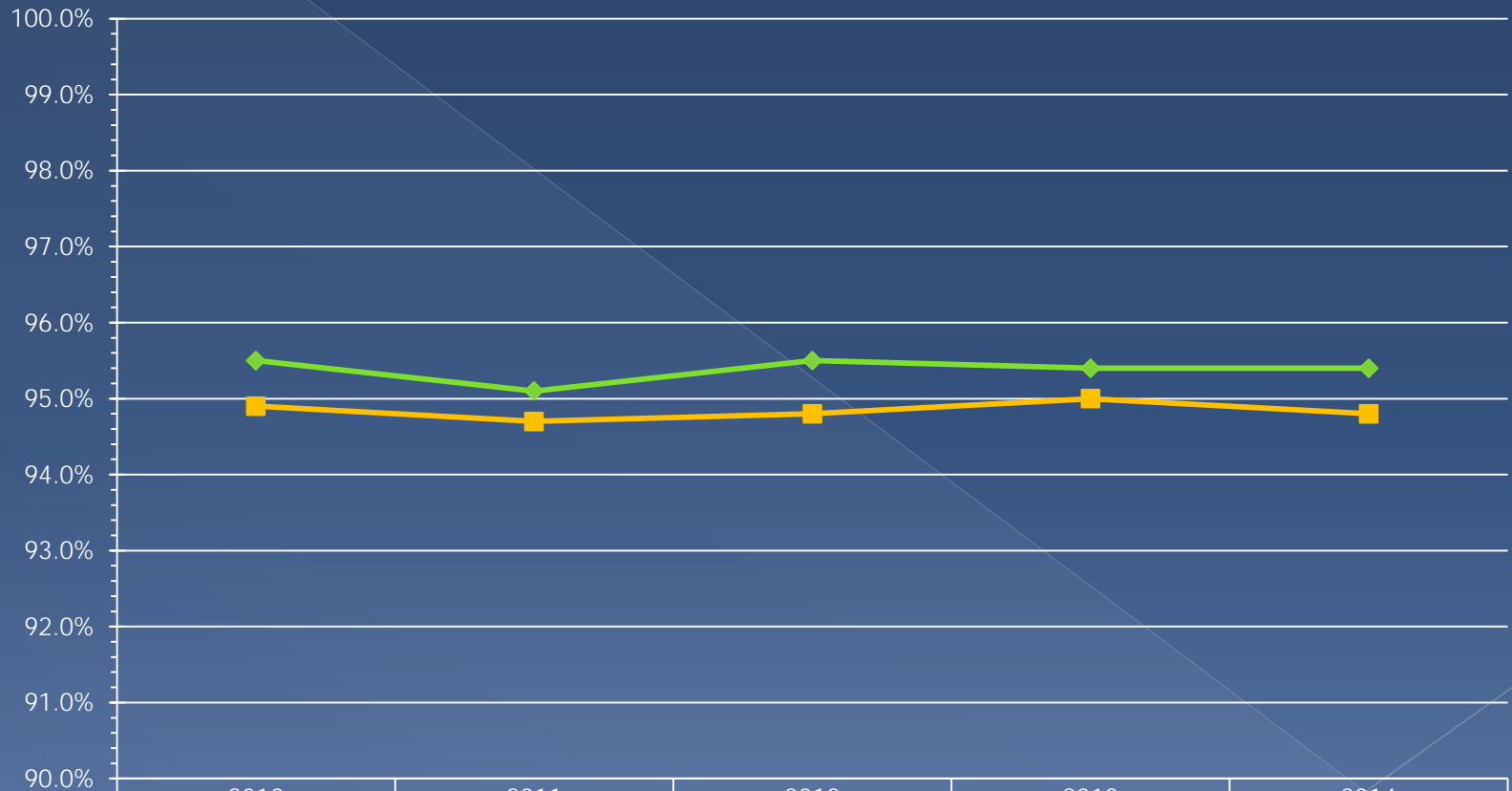
92.8%

76.9%

77.6%

79.8%

Northfield Public Schools Attendance Trends



◆ Northfield
■ State

2010

2011

2012

2013

2014

95.5%

95.1%

95.5%

95.4%

95.4%

94.9%

94.7%

94.8%

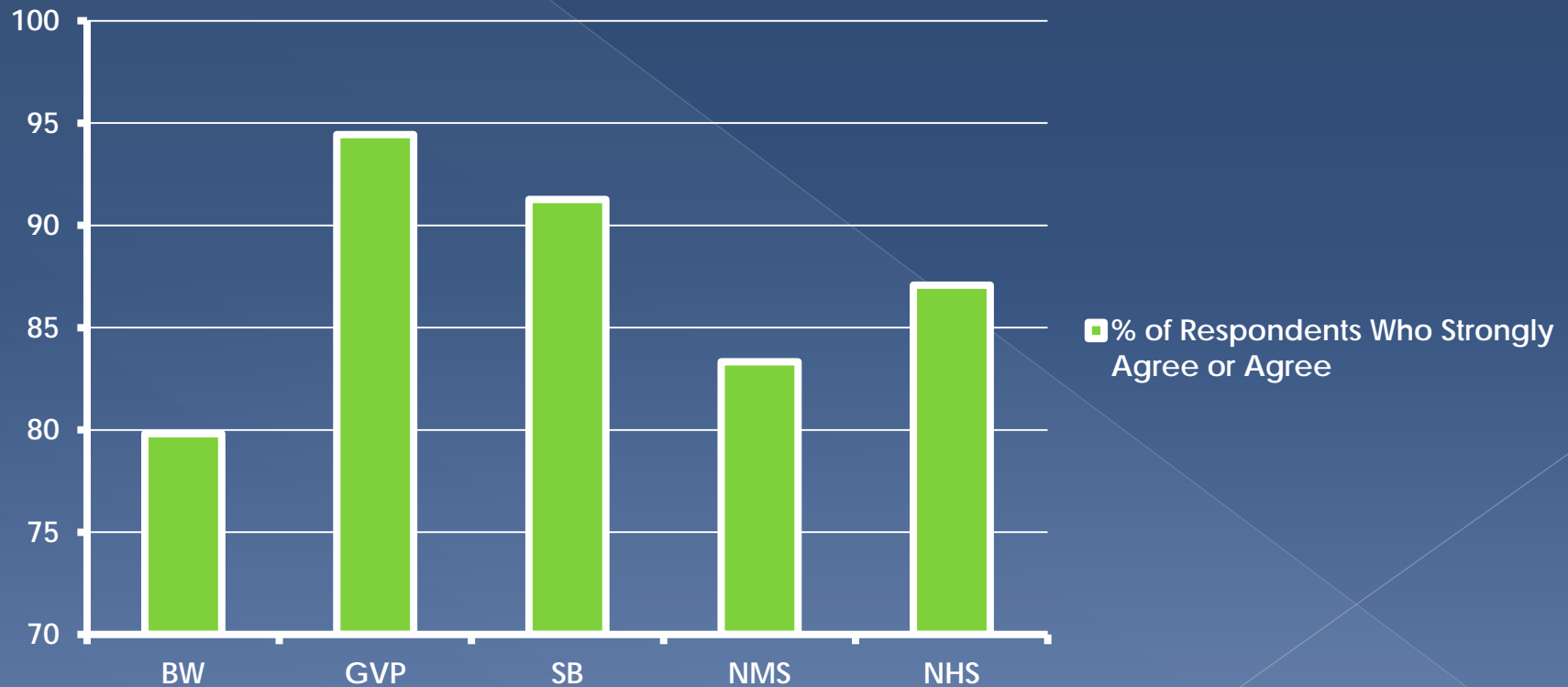
95.0%

94.8%

Northfield Schools 2014

Climate Survey

Parent Response to the Statement:
Overall, the school meets my student's academic and social needs.



Levels of Student Data Review

- District Educational Parent Advisory Committee
- School Site Improvement Meetings
- Staff Meetings at buildings
- Professional Learning Community Meetings

Best Practices to Increase Student Achievement

- Implementation of PBIS at MS, HS, ALC
- Professional Development for teachers:
 - Social Emotional Supports
 - English Learner Instructional Strategies
 - Response to Intervention
- Continuous improvement in curricular areas embedded in the PLC process
- Further development and implementation of instructional coaching

New Initiatives

- Community School at Greenvale Park
- Child at a Glance form and ongoing research project
- Literacy Work:
 - ✧ Training for staff in Leveled Literacy Instruction
 - ✧ Summer work for all elementary classroom teachers
- Mechatronics (HS) and other collaborative efforts
- Northfield Promise Action Teams

DEPAC MEETINGS

- › October 20
- › November 17
- › February 16
- › March 16
- › April 20
- › May 18

Public and School Board WBWF Meetings

- ◆ **September 22, 2014:** Report on WBWF for 2013-14
- ◆ **October 13, 2014:** WBWF Plan and Data Report
- ◆ **May 26, 2015:** DEPAC Presentation of broad District Goals for 2015-16

**Questions or
Comments?**