

## GREENVALE PARK ELEMENTARY

### November 2017 Gazette

**Sam Richardson,**  
Principal  
507.645.3500

**Attendance Line**  
507.645.3506

#### November Calendar:

6—NO SCHOOL (Teacher Work Day)  
 6—4-7pm Parent/Teacher Conferences  
 6—4-7pm Book Fair  
 7—Referendum Vote  
 9—4-7pm Parent/Teacher Conferences  
 9—4-7pm Book Fair  
 13-17—Stuff the Turkey  
 14—4-7pm Parent/Teacher Conferences  
 14—4-7pm Book Fair  
 16—Community School Transition Group  
 17—Student Council meeting  
 22—NO SCHOOL (Teacher Work Day)  
 23—NO SCHOOL Thanksgiving  
 24—NO SCHOOL Thanksgiving  
 30—Community School Transition Group



## Hello Greenvale Park Families,

As we reach November, it is an important time of the year to say "thank you." I am thankful for the students and staff at our school. I am seeing Geckos showing pride in their school and working hard to learn. I appreciate the parents and the support given to the school in many ways. We look forward to seeing you here at the school soon!

#### Referendum:

An extremely important decision for the future of our schools will be made on Tuesday, November 7th. All school district residents will be asked to vote for a continuing operating levy and a bond to build a new elementary school next door to Greenvale Park Elementary, a new Northfield High School and to make minor additions to Bridgewater and Sibley Elementary. Follow this link for information about where to vote and what is on the ballot:

<https://northfieldschools.org/referendum/>

#### Read-a-Thon review:

The Greenvale Park Elementary community had a very successful Read-a-thon on October 26th. Student read for 120 minutes and many classrooms read well over that time. The day began with a Reader's Theater skit for the entire school and classrooms participated in fun activities all day long. Students enjoyed entering to win raffle prizes and student winners were announced Friday afternoon. The biggest news of all came after the end of the celebration night. Students met their goal of \$20,000 and earned all four prizes: on October 31st, students participated in a bouncy house obstacle challenge and a scavenger hunt. The students also earned a PJ Day on Friday, October 27th, extra recess with their classroom and are making the principal dress up in different book character costumes. Thank you to the Greenvale Park PTO for all of their hard work to plan, promote and carry out this big undertaking.



Check out some of the excitement here: <http://greenvaleparkpto.weebly.com/>

#### Conferences:

We look forward to meeting with parents beginning next week. Our fall conferences will be held on Monday, November 6; Thursday, November 9; Tuesday, November 14. Child care will be available each evening from 3:45-7pm. Also, the Greenvale Park Book Fair will be held during Parent/Teacher Conference hours only this fall.



#### New Technology-based Reading Programs:

This fall, Northfield Public Schools introduced new computer-based reading programs to provide targeted practice and assessment for students. The new programs, purchased by the district, can be implemented for individual students and can supplement reading instruction from the teacher. Student time with the program will vary and this is not a replacement for teacher-led reading instruction. The information the program provides teachers can be used to guide instruction and identify areas for re-teaching.

*(Mr. Richardson's letter continued from page 1)*

or enrichment. Students use iPads or Chromebooks to engage with these programs. Ask your student about their experience with one of the following programs:

Grades 1 and 2 will use Imagine Learning.

Grades 3 and 4 will use Lexia Core 5.

Grades 5, 6, and 7 will use Reading Plus.

### **No School Days:**

November 6 – Teacher Work day at the end of the 1<sup>st</sup> quarter; November 22 – Teacher Workshop day; November 23 and 24 Thanksgiving break



## **Hola familias de Greenvale Park,**

Cuando llegamos a noviembre, es un momento importante del año para decir "gracias". Estoy agradecido por los estudiantes y el personal de nuestra escuela. Estoy viendo a Geckos mostrando orgullo en su escuela y trabajando duro para aprender. Aprecio mucho a los padres y al apoyo brindado a la escuela de muchas maneras. ¡Esperamos verte aquí en la escuela pronto!

### **Referéndum:**

El martes 7 de noviembre se tomará una decisión extremadamente importante para el futuro de nuestras escuelas. Se les pedirá a todos los residentes del distrito que voten por continuar con un impuesto operativo y una fianza para construir una nueva escuela primaria al lado de la escuela primaria de Greenvale Park, una nueva Northfield High School y para hacer adiciones menores a Bridgewater y Sibley Elementary. Siga este enlace para obtener información sobre dónde votar y qué hay en la boleta electoral:

<https://northfieldschools.org/referendum/>

### **Read-a-Thon review:**

La comunidad de la escuela primaria de Greenvale Park tuvo un maratón de lectura (Read-a-thon) muy exitoso el 26 de octubre. Los estudiantes leyeron durante 120 minutos y muchas clases leyeron mucho más que ese tiempo. El día comenzó con una obra de teatro de Reader's Theatre (Teatro del lector) para toda la escuela y los salones de clase participaron en actividades divertidas durante todo el día. Los estudiantes disfrutaron de participar en los premios de la rifa y los ganadores de los estudiantes fueron anunciados el viernes por la tarde. La noticia más importante llegó después del final de la noche de celebración. Los estudiantes alcanzaron su meta de \$ 20,000 y ganaron los cuatro premios: el 31 de octubre, los estudiantes participarán en un desafío de obstáculos de la casa hinchable y una búsqueda del tesoro. Los estudiantes también ganaron un día en pijama el viernes, 27 de octubre, recreo adicional con su salón de clases y están haciendo que el director se vista con disfraces inspirados en diferentes personajes de libros. Gracias a Greenvale Park PTO por todo su arduo trabajo para planificar, promover y llevar a cabo esta gran empresa.

Pueden seguir y consultar parte de todo esto en: <http://greenvaleparkpto.weebly.com/>

### **Reuniones con las maestras y maestros:**

Tenemos muchas ganas de reunirnos con padres, madres y tutores empezando la próxima semana. Nuestras reuniones con maestras y maestros en el otoño serán los días lunes 6 de noviembre; jueves 9 de noviembre; martes 14 de noviembre. Habrá cuidado infantil cada tarde de 3:45 a 7pm. También, la feria de libros de Greenvale Park se hará solamente durante las horas de las reuniones con maestras y maestros en el otoño.

**Feria de libros:** Por favor, vean el artículo de Amanda Heinritz, especialista de Media en GVP, en este mismo boletín de noticias del Gazette.

*Mr. Richardson's letter continued on page 3)*

(Mr. Richardson's letter continued from page 2)

**No hay escuela:** El lunes 6 de noviembre – Día de trabajo para maestras y maestros al final del 1<sup>er</sup> trimestre; 22 de noviembre – día de talleres para maestras y maestros; 23 y 24 de noviembre, vacaciones del Día de Acción de Gracias (Thanksgiving)

### Nuevos programas de lectura con nueva tecnología:

Este otoño, las Escuelas Públicas de Northfield introdujeron nuevos programas de lectura basados en computadora para proporcionar prácticas y evaluaciones específicas para los estudiantes. Los nuevos programas, comprados por el distrito, se pueden realizar para estudiantes individuales y pueden complementar las instrucciones y enseñanza de lectura de la maestra o maestro. El tiempo del estudiante con el programa variará y esto no reemplaza las instrucciones de lectura dirigidas por la maestra o maestro. La información que el programa proporciona a los maestros puede usarse para guiar la instrucción e identificar áreas que hay que volver a enseñar o ampliar. Los estudiantes usan iPads o Chromebooks para participar en estos programas. Pregúntele a su hija/ o sobre su experiencia con uno de los siguientes programas:

Los grados 1 y 2 van a usar Imagine Learning.

Grados 3 y 4 van a usar Lexia Core 5.

Grados 5, 6, y 7 van a usar Reading Plus.

## Transitions Group...Savannah Stuckmayer, Community School

Transitions Group is a new club at Community School! This group is for helping school-aged kids through family transitions (moving, loss, divorce, separation, school transfer, new baby, etc.) by approaching these topics in a safe, nurturing, yet fun manner. During these get-togethers, mental health practitioners and family therapists guide the children through their emotions and give a voice to their feelings, thus improving their abilities to function at school and at home. This free service is open to any school-aged children and meets on Thursdays at Greenvale Park from 5:30-6:30pm. November dates are 11/16 and 11/30. December dates are 12/7 and 12/14.



¡El Grupo de Transiciones es un club nuevo en la Escuela Comunitaria! El propósito de este grupo es ayudar a niños/as de la primaria durante transiciones en la familia (mudarse, pérdida, divorcio, separación, cambios de escuela, nuevo bebe, etc.) por acercarlos a estos tópicos en una manera segura y cariñosa mientras divertirse. Durante estas sesiones, profesionales de salud mental y terapeutas familiares guían a niños/as a través de las emociones y les dan una voz a sus sentimientos, así mejorando las habilidades de funcionar en escuela y en casa. Este servicio gratis está abierta a todos niños de edades escolar y reúne los jueves en Greenvale a las 5:30-6:30. Fechas de noviembre son 11/16, 11/30. Fechas en diciembre son 12/7, 12/14.

## Emergency Closing Procedures

The following provides information that families need to be aware of regarding school closings.

1. In the event that school is closed for the day, or a two-hour late start is warranted, the following radio/ television stations will broadcast this information:  
KYMN-1080 AM WCCO-830 AM KARE-TV 11 KDHL-Power 96 KMSP-TV 9 KSTP-TV 5 WCCO-TV 4
2. If a two-hour late start is implemented (school begins two hours later than usual), bus pick-up will be approximately two hours later than the normal time.
3. All elementary school activities will be postponed or cancelled if no school occurs or if school is dismissed early.
4. All Community Services events, classes, and open gym activities are cancelled if no school occurs or if school is dismissed early. If school begins two hours late, all morning Community Education classes are cancelled.



**Note to parents:** Web sites containing “up to the minute” emergency school closing information: WCCO.com KARE11.com WCCORadio.com.

## Coming Soon—Scholastic Book Fair!

This year we are hosting a Scholastic Book Fair in November, during the evenings of Parent/Teacher Conferences, **November 6, 9 and 14 from 4-7pm**. This fair will be smaller than usual. Students will receive a book fair flyer. All of the items for sale in the flyer will be available, plus a selection of bargain books! The proceeds from the fair will go toward students and *I Love to Read Month*.



**Want to volunteer?** We need several volunteers to help with an easy set-up, sales and tear-down each night. Please consider volunteering. Commitments are a little over an hour. To volunteer, go to <http://tinyurl.com/gvpbookfair>

## Student Council News...Carrie Rice & Ryan Driscoll



Each month Student Council takes on a special project. In October, we celebrated Sock-tober--students brought in a new pair of socks to be donated to the Community Action Center. Geckos brought in 52 new pair of socks during the Sock-tober event! November's special project will be "Stuff the Turkey". Students can bring in a nonperishable food item to be donated during the week of November 13-17. How many pounds of food can Greenvale Park donate? Stay tuned!

November meeting date us November 17 at 7:50am in the Media Center.

## NEWS FROM PHYSICAL EDUCATION! Mary Wojick & Ryan Driscoll

Students have been active outside in PE as much as possible this past month. We have done a lot of movement activities, throwing and kicking activities and have run the mile and the half mile for times!

Upcoming activities include: volley activities, more movement fun, PACER and large group games!



## Second Step at GVP...Melissa Larsen, GVP Behavior Coach

This school year, our Geckos have been learning skills taught in the *Second Step* program.

Starting in September, our schoolwide theme was skills for learning: listening, focusing attention, using self-talk to stay on-task, and being assertive when asking for help with a learning task. Through the use of daily instruction, morning announcements, and opportunities for practice, your students have mastered these and are prepared to be successful learners.

In the months of October and November, our schoolwide theme has been empathy. Skills that are being taught include identifying feelings in ourselves and in others, noticing and respecting same and different feelings, and showing compassion. Your students have learned that compassion involves saying kind words or doing something helpful to show you care how another person feels. When students can identify, understand, and respond in a caring way to how someone else is feeling, it helps create a positive and accepting school climate.

*Second Step* lessons specifically teach about empathy. You'll be receiving Home Links describing why empathy is important. The Home Links include fun activities to do with your child as a family to help him or her identify feelings and practice showing empathy and compassion. We hope you find them helpful.

If you have any questions or are looking for more ideas about how you can help your child learn to identify feelings and show empathy and compassion at home, contact your child's teacher or the Greenvale Park Elementary Behavior Coach, Melissa Larsen at 507.645.3500.





## Stuff the Turkey November 13-17

Bring to Greenvale Park a non perishable food item to be donated to the  
Community Action Center  
Sponsored by our Greenvale Park Student Council



## Safety Patrol...Renee Malecha & Rhonda Stanley

Please help your safety patrol student remember their duty days. Also, please remember they need to get a sub if they are not able to make their assigned duty time and let Mrs. Malecha know who the sub will be. With the cold Minnesota winter season upon us, please help your student remember to dress for the weather — boots, mittens/gloves, hat, scarf, snowpants, warm jacket.



And remember, a responsible safety patrol member is always at their post on time!

Please check the  
**Lost and Found**  
during Parent/Teacher Conferences.  
Items remaining after Conferences will be bagged up  
and donated to a worthy cause.

## Holiday Wish Lists...Jessica Wedel, GVP PTO



The PTO has been gathering Holiday Wish Lists from staff of items that they could put to immediate use in their areas at Greenvale Park. If you are interested in participating, suggested gift ideas for staff will be available for parents during the November 6th, 9th and 14th Parent/Teacher Conference nights. Please look for the holiday trees and ornaments in the front hallway when you enter the building for conferences. It's easy!! Select a tag of your choosing, purchase the item and return it to the appropriate staff member at school, or bring it to the office for distribution, if you'd like to remain anonymous! Please be sure to not only look for tags from your childrens' teachers, but also from their favorite support staff as well. Thank you for your continued support!!

## Photos from Greenvale Park Read-a-Thon

Our goal of \$20,000 was surpassed!



## Community Services

Northfield Public Schools Community Services Division has many great programs that start in **November and December**. For more information or to register for these great programs visit us online at [www.nfld.k12.mn.us](http://www.nfld.k12.mn.us) (follow the Community Services link), call 507-664-3649, or visit the Northfield Community Resource Center at 1651 Jefferson Parkway, Northfield. **Scholarships are available for all programs.**

### MN Star Watch Party in Northfield

All ages, \$13/person, \$40/group of up to 4, \$75 per group of 5-15. M, Nov. 6; 7 – 9:30 p.m. Middle School Cafeteria & Baseball Fields. **Class #: 3240-F17A**

### Watch Me Draw: Create Like a Pro: Fall Art Blast!

Grades k-5, \$75, Th, Nov. 2 - Dec. 14 (no class Nov. 9 and Nov. 23), 3:20 - 4:20pm Greenvale Park Art Room **Class #: 4395-F17G**

### Taekwondo- Youth Beginner

Grades 2-12, \$74.00, Tu & Th, Nov. 2 - Dec. 19 (no class Nov. 23 & Dec. 14) 6-6:45pm Sibley Cafeteria **Class #: 4165-F17BBeg**

### Adventure Mania - Rock Climbing @ REI

ages 10+, \$39.00, Sa, Nov. 11, 9am - 1:30pm Registration deadline: Friday, November 3, REI Bloomington **Class #: 1112-F17A**

### Boys and Girls Bowling-Thursdays

grades k-12, \$89/new participants or \$85/returning participants, Th, Nov. 30-Feb. 8 (no class Dec. 21 & 28), 4-5:30pm Jesse James Lanes **Class #: 1057-F17BThurs**

### Boys and Girls Bowling-Fridays

grades k- 12, \$89/new participants or \$85/returning participants, F, Dec. 1 - Feb. 9 (no class Dec. 22 & 29) 4-5:30pm Jesse James Lanes **Class #: 1057-F17BFri**

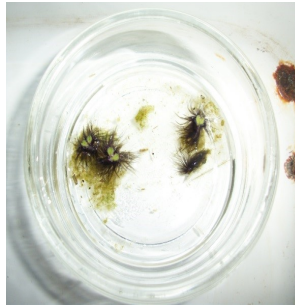


Photo by Arlene Kjar

### Duck Weed *Lemnaceae*

The photo of Duck Weed was taken from a water sample from Sibley Marsh in Northfield. They can probably be found in the creek next to GLONA or in the ponds at Hauberg Woods. The Duck Weed family consists of floating plants without leaves. Instead, they have a flattened large divided leaf. Some may have roots as does the one in the photo. New plants are formed by vegetative budding; however, the duck weeds do produce flowers and are the world's smallest flowering plants. They are a valuable native plant and provide food for water birds.

The Northfield Prairie Partners Chapter of Wild Ones will be providing a free program about the birds that live in prairies. *Native Prairie Birds* will be presented by Gerry Hoestra at 7pm at Emmaus Church, 712 Linden St N, Northfield on Nov.9th. Arlene Kjar, President of the Northfield Prairie Partners

**NO SCHOOL**  
**Monday, November 6th—Teacher Work Day**  
**Wednesday, November 22nd — Teacher Work Day**  
**Thursday & Friday, November 23rd & 24th**  
**Happy Thanksgiving!!**



## News from our Nurse...Julie Ochs



Welcome to winter! Here are some winter safety reminders:

The students should be coming with warmer clothing, such as heavier coats, snowpants, boots, hats, scarves and gloves. If you have a need for any of these items, please call my office at 507.645.3504.

Home: please check your smoke detector and carbon monoxide detectors to see if they are working; when starting a furnace or fireplace, things can easily happen.

This is also the Influenza season. Flu shots are available at any medical clinic and many pharmacies, and are covered by insurance.

Head lice are also in many of the classrooms. Please check your child's head and report any live lice. Call me if you need further information as to what they look like or how to treat for them.

There also has been some cases of strep throat.

We teach our children to share, but it is GOOD to reinforce not to share things like water bottles, cups, glasses, toothbrushes, hats, head gear, brushes, combs, hair binders, etc. When they are in activities keep their belongings separate from others versus throwing them on top of others' belongings.

Remember the best way to keep healthy this winter is good hand washing, plenty of rest, drinking fluids.

\*\*\*\*\*

## Influenza (Flu) Information for Parents

### What is influenza (flu)?

The flu is a respiratory disease caused by a virus that attacks the nose, throat, and lungs. It can be mild, but is sometimes severe and at times can lead to death. It is not the same as the "stomach flu."

### What are the symptoms?

Flu symptoms include fever, dry cough, sore throat, headache, extreme tiredness, and body aches. These symptoms come on quickly and can be bad enough to keep you in bed for several days.

### Should my child get a flu vaccination?

Yes. Everyone 6 months of age and older should get flu vaccine every year. Getting a flu vaccine (the shot or nasal spray) helps protect your child from getting the flu and helps prevent them from passing it to people who can get very sick from flu – like babies, elderly people, and people who have chronic diseases.

### Are children at high risk for complications of flu?

Sometimes healthy people, including children, can have serious complications or die from the flu. Children at risk for serious complications include:

- Children age 6 months to 5 years, but especially those under 2 years
- Children and teens 5-18 years with:
  - Heart disease
  - Asthma or other Pulmonary disease
  - Metabolic disease (including diabetes)
  - Immune deficiency
  - Blood disorders
  - Long-term aspirin therapy
- Teens who are pregnant during flu season

*(Influenza continued on page 8)*

*(Influenza info continued from page 7)*

**Should my child get one or two doses of flu vaccine?**

It depends on your child's age and whether they got flu vaccine this past year. If your child is 6 months through 8 years old, he or she may need two doses at least four weeks apart. Ask your doctor or clinic.

**When should my family get vaccinated?**

For best protection, flu vaccine is usually given in early fall before flu season starts. But you can get it anytime during flu season which is typically October through April.

**How is flu different from a cold?**

Colds are generally less serious than the flu. With a cold, you may have a runny or stuffy nose, while the flu causes body aches, fever, and extreme fatigue. A cold won't usually keep kids from their normal activities, but kids with the flu will often feel too sick to play. Unlike colds, flu can cause serious health problems like pneumonia, bacterial infections, and hospitalization.

**What type of flu vaccine should my child get?**

There are several types of flu vaccine available. Your health care provider will know what type of vaccine is best for your child. The most important thing is to get them vaccinated. Don't wait for a specific type of flu vaccine to be available.

- **Nasal spray vaccine** – This vaccine is available for healthy, non-pregnant people age 2 to 50 years, so most children and teens can get it. If your provider does not have the nasal spray, your children should get the flu shot.
- **Quadrivalent vaccine** - This vaccine protects against four strains (or types) of flu: two A strains and two B strains. It is available in the nasal spray or a shot. While this vaccine is designed to protect against more flu strains, its effectiveness will depend on the strains that are circulating during the flu season.

**Can my child be vaccinated if they are allergic to eggs?**

In most cases, a child with an egg allergy can be safely vaccinated. Children who experience only hives after eating eggs may be vaccinated with the flu shot. After vaccination, you will be asked to stay to be watched for 30 minutes.

A child who experiences more severe symptoms after eating eggs should be vaccinated by a provider with experience managing allergic reactions. If your child has other allergies that could be related to an egg allergy but has never consumed eggs, tell your provider. Children with an egg allergy should not receive the nasal spray vaccine.

**What if my child has the flu?**

- Stay home if you or your child is sick.
- Rest and drink lots of fluids.
- Children may need fever reducing medications to keep their fever under control. Follow your doctor's instructions.
- Antibiotics will not help a person recover from the flu. Flu is caused by a virus not by bacteria.
- Take your child to the doctor or the emergency room if he or she:
  - Breathes rapidly or with difficulty
  - Has bluish skin color
  - Does not drink enough and becomes dehydrated
  - Does not wake up or interact with others
  - Is so irritable that he or she doesn't want to be held
  - Gets better only to become sick again, with fever and a more severe cough
- If you are concerned that something does not seem right with your child, call your doctor or clinic.



**What can I do to protect myself and others?**

- Get vaccinated.
- Avoid being around others who are sick.
- Cover your nose and mouth with a tissue when you cough or sneeze, or cough or sneeze into your sleeve.
- Wash your hands often with soap and water or an alcohol-based hand sanitizer.
- Protect infants by not exposing them to large crowds or sick family members when flu is in your community.
- Do not share drinking cups and straws.
- Frequently clean commonly touched surfaces (door knobs, refrigerator handles, phones, water faucets).