

**NORTHFIELD PUBLIC SCHOOLS**  
**Office of the Superintendent**  
**Memorandum**

**TO:** Board of Education  
**FROM:** Matt Hillmann Ed.D., Superintendent  
**RE:** Table File Items for November 12, 2024 Regular School Board Meeting

6. Consent Agenda

c. Personnel Items

i. Appointments

7. Odin Bowen, Instructor Assistant with Community Education Recreation, beginning 11/10/2024 - 5/31/2025. Step 1-\$14.50/hr.
8. Seth Buckmeier, Instructor Assistant with Community Education Recreation, beginning 11/17/2024 - 5/31/2025. Step 2-\$14.76/hr.
9. Jeffrey Eckhoff, 1.0 FTE Long Term Substitute Science Teacher at the High School, beginning 11/25/2024 - 1/22/2025. Sub rate
10. Anna Edwards, Special Ed EA PCA for 6.75 hours/day at Spring Creek, beginning 11/13/2024 - 6/6/2025. Step 4-\$18.05/hr. + prorated sped stipend, subject to change upon settlement of 24-26 agreement.
11. Jamie Stanley, Special Ed EA PCA for 7 hours/day at the High School, beginning 11/18/2024. Step 1-\$16.66/hr. + prorated sped stipend, subject to change upon settlement of 24-26 agreement.
12. Veronica Thomas, Long Term Substitute Special Ed EA PCA for 31.5 hours/week at the NCEC, beginning 11/14/2024 - 2/14/2025. Step 4-\$18.05/hr. + prorated sped stipend, subject to change upon settlement of 24-26 agreement.

ii. Increase/Decrease/Change in Assignment

13. Tracy Closson, District Grounds Coordinator, add .50 Ski Club Chaperone and Summit Ski Instructor with Community Education Recreation, effective 1/6/2025 - 5/31/2025. Ski Club .50 - \$250 stipend, Ski Instructor \$100/participant.
14. McKenzie Foley, Teacher at Bridgewater, add Private Lessons with Community Ed Recreation, effective 11/1/2024 - 5/31/2025. Group up to 5 per group \$36/individual/hour. \$45/individual/hour.
15. Lilliana Quiroga, Special Ed EA PCA at the Middle School, add Special Ed EA Extracurricular and Nonacademic Support as needed at the Middle School, effective 11/8/2024 - 6/6/2025.
16. Lindsay Svien, Special Ed EA for 10 hours/week and Gen Ed EA for 5 hours/week at Greenvale Park, change to Special Ed EA for 7 hours/week and Gen Ed EA for 5 hours/week at Greenvale Park, effective 11/11/2024.

- d. Financial Report. Director of Finance Mertesdorf requests the board approve paid bills totaling \$2,551,737.80, payroll checks totaling \$3,485,799.17, a wire transfer totaling \$600,000 from Frandsen General to Frandsen Sweep, a wire transfer totaling \$450,000.00 from Frandsen Sweep to Frandsen General, and the financial reports for August 2024. At the end of August 2024 total cash and investments amounted to \$26,037,364.43.

7. Items for Individual Action

- a. Resolution Canvassing the Results of the November 5, 2024 School Board Election. The school board election was held on November 5, 2024. We are recommending that the board adopt the Resolution Canvassing Returns of Votes of the School District's General Election as enclosed.

**Superintendent's Recommendation:** Motion to approve the adoption of the Resolution Canvassing Returns of Votes of the School District's General Election as presented.

- b. Resolution Authorizing Issuance of Certificates of Election and Directing School District Clerk to Perform Other Election Duties. The school board is asked to adopt the Resolution Authorizing Issuance of Certificates of Election and Directing the School District Clerk to Perform Other Election Related Duties as presented.

**Superintendent's Recommendation:** Motion to adopt the Resolution Authorizing Issuance of Certificates of Election and Directing the School District Clerk to Perform Other Election Related Duties as presented.

- c. Resolution Relating to Canvassing Returns of the November 5, 2024 Special Election. The school building bond election was held November 5, 2024. The school board is asked to adopt the enclosed Resolution Relating to Canvassing Returns of the November 5, 2024 School District Special Election as enclosed.

**Superintendent's Recommendation:** Motion to adopt the Resolution Relating to Canvassing Returns of the Special Election held on November 5, 2024, on the question of shall the board of Independent School District No. 659 (Northfield Public Schools), Minnesota be authorized to issue general obligation school building bonds in an amount to to exceed \$95,380,000 for acquisition and betterment of school sites and facilities including, but not limited to, replacing a portion of the high school building with new construction, renovations, improvements, and upgrades to the high school building, facilities, site, and systems, and purchasing equipment and furnishings be approved (question 1) of which 10,067 voted in favor, 6,855 voted against the same. Said proposition, having received the approval of at least a majority of such votes, is hereby declared to have carried. On the question if School District Question 1 above is approved, shall the board of Independent School District No. 659 (Northfield Public Schools), Minnesota be authorized to issue general obligation school building bonds in an amount not to excess \$18,725,000 for acquisition and betterment of school sites and facilities including, but not limited to, the construction of an expanded gymnasium at the high school (question 2) of which 8,991 voted in favor, 7,767 voted against the same. Said proposition, having received the approval of at least a majority of such votes, is hereby declared to have carried. On the question if School District Question 1 and School District Question 2 above are approved, shall the board of Independent School District No. 659 (Northfield Public Schools), Minnesota be authorized to issue general obligation school building bonds in an amount not to exceed \$6,975,000 for acquisition and betterment of school sites and facilities including, but not limited to, the construction and installation of a geothermal heating, ventilation, and air conditioning system at the high school (question 3) of which 9,445 voted in favor, 7,290 voted against the same. Said proposition, having received the approval of at least a majority of such votes, is hereby declared to have carried.

TO: Dr. Matt Hillmann, Superintendent  
FROM: Val Mertesdorf, Director of Finance *VM*  
DATE: November 25, 2024  
RE: Board Approval of Financial Reports – August 2024

We request that the Board of Education approve paid bills, payroll, bond payments, electronic funds transfers, investments and financial reports for the month of August 2024.

Bills totaling \$2,551,737.80 were paid in August 2024.

Payroll checks totaling \$3,485,799.17 were issued in August 2024.

No bond payments were paid in August 2024.

At the end of August 2024 Total Cash and Investments amounted to \$26,037,364.43.  
Wire transfers initiated by the district during August 2024:

|              |   |
|--------------|---|
| \$600,000.00 | From Frandsen General to Frandsen Sweep |
| \$450,000.00 | From Frandsen Sweep to Frandsen General |

The following financial reports for August 2024 are included to show the current cash and investment balances, details of disbursements and electronic funds transfers.

1. Treasurer's Report
2. Disbursement Report

August 2024 Treasurer's Report

| FUNDS                   | BALANCE<br>BEGINNING<br>OF MONTH | RECEIPTS            | DISBURSEMENTS       | JOURNAL<br>ENTRIES | BALANCE<br>END OF<br>MONTH |
|-------------------------|----------------------------------|---------------------|---------------------|--------------------|----------------------------|
| GENERAL FUND            | 6,002,705.59                     | 4,816,632.33        | 4,663,400.84        | (842,017.75)       | 5,313,919.33 *             |
| FOOD SERVICE            | 1,061,500.62                     | 76,177.77           | 93,601.65           | 3,538.57           | 1,047,615.31               |
| COMMUNITY ED            | 762,259.30                       | 297,675.35          | 440,628.00          | 170,523.62         | 789,830.27                 |
| CONSTRUCTION ACCOUNT    | -                                | -                   | -                   | -                  | -                          |
| DEBT SERVICE            | 2,401,189.20                     | 164,636.84          | -                   | -                  | 2,565,826.04               |
| SELF INSURANCE          | 4,035,237.93                     | 41,631.29           | 839,906.48          | 676,593.27         | 3,913,556.01               |
| <b>TOTALS</b>           | <b>14,262,892.64</b>             | <b>5,396,753.58</b> | <b>6,037,536.97</b> | <b>8,637.71</b>    | <b>13,630,746.96</b>       |
| GENERAL FUND INVESTMENT | 12,406,617.47                    | -                   | -                   | -                  | 12,406,617.47 *            |
| CONSTRUCTION INVESTMENT | -                                | -                   | -                   | -                  | -                          |
|                         | 12,406,617.47                    | -                   | -                   | -                  | 12,406,617.47              |
| <b>GRAND TOTALS</b>     | <b>26,669,510.11</b>             | <b>5,396,753.58</b> | <b>6,037,536.97</b> | <b>8,637.71</b>    | <b>26,037,364.43</b>       |

\*General Fund includes Certificate of Deposit amount





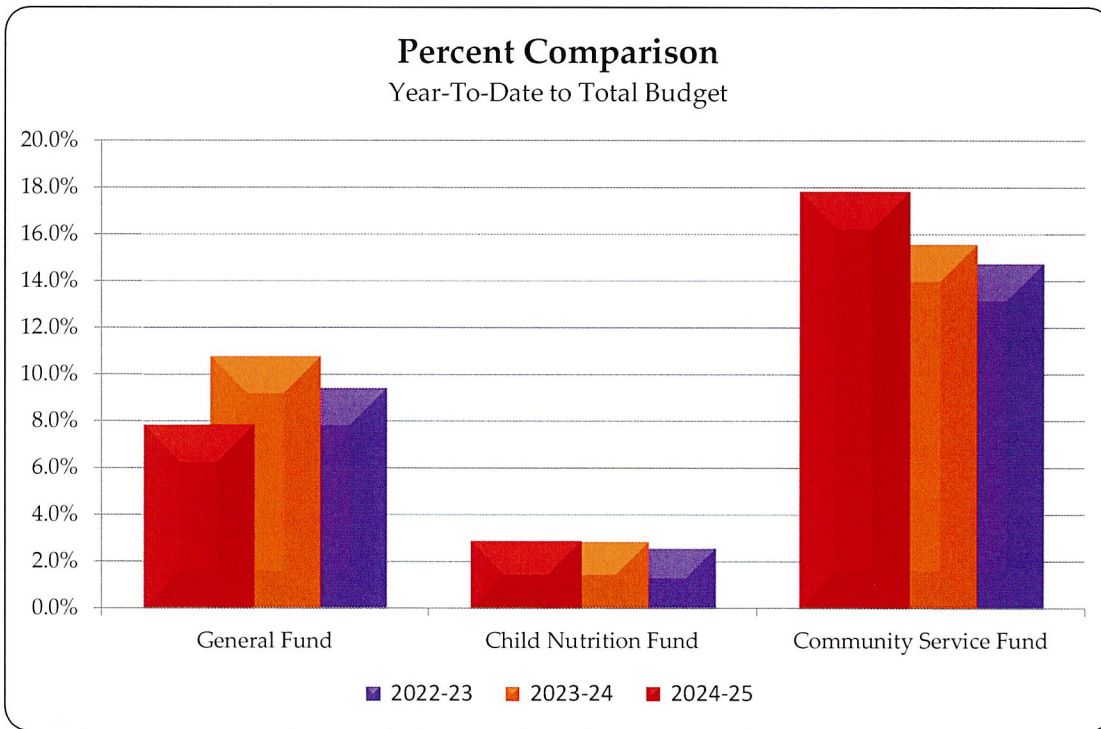
# Northfield

PUBLIC SCHOOLS

## STATEMENT OF REVENUES

For the month ended August 31, 2024

| Fund                   | Year-To-Date        | Budget               | YTD as % of Budget |              |             |
|------------------------|---------------------|----------------------|--------------------|--------------|-------------|
|                        |                     |                      | 2024-25            | 2023-24      | 2022-23     |
| <b>General Fund</b>    |                     |                      |                    |              |             |
| Property Taxes         | \$ 85,356           | \$ 18,429,798        | 0.5%               | 0.6%         | 0.2%        |
| State Sources          | 4,636,701           | 46,103,824           | 10.1%              | 13.9%        | 11.9%       |
| Federal Sources        | 29,401              | 1,371,005            | 2.1%               | 8.0%         | 14.7%       |
| Local Sources          | 561,634             | 1,840,191            | 30.5%              | 27.5%        | 17.9%       |
| <b>Total</b>           | <b>\$ 5,313,092</b> | <b>\$ 67,744,818</b> | <b>7.8%</b>        | <b>10.8%</b> | <b>9.4%</b> |
| Child Nutrition Fund   | \$ 73,417           | \$ 2,550,906         | 2.9%               | 2.8%         | 2.6%        |
| Community Service Fund | 647,898             | 3,633,084            | 17.8%              | 15.6%        | 14.7%       |
| Debt Service Fund      | 301,549             | 4,322,700            | 7.0%               | 5.9%         | 6.2%        |
| Internal Service Fund  | 1,435,200           | 11,298,342           | 12.7%              | 12.0%        | 12.3%       |
| <b>Total All Funds</b> | <b>\$ 7,771,156</b> | <b>\$ 89,549,850</b> | <b>8.7%</b>        | <b>10.5%</b> | <b>9.6%</b> |

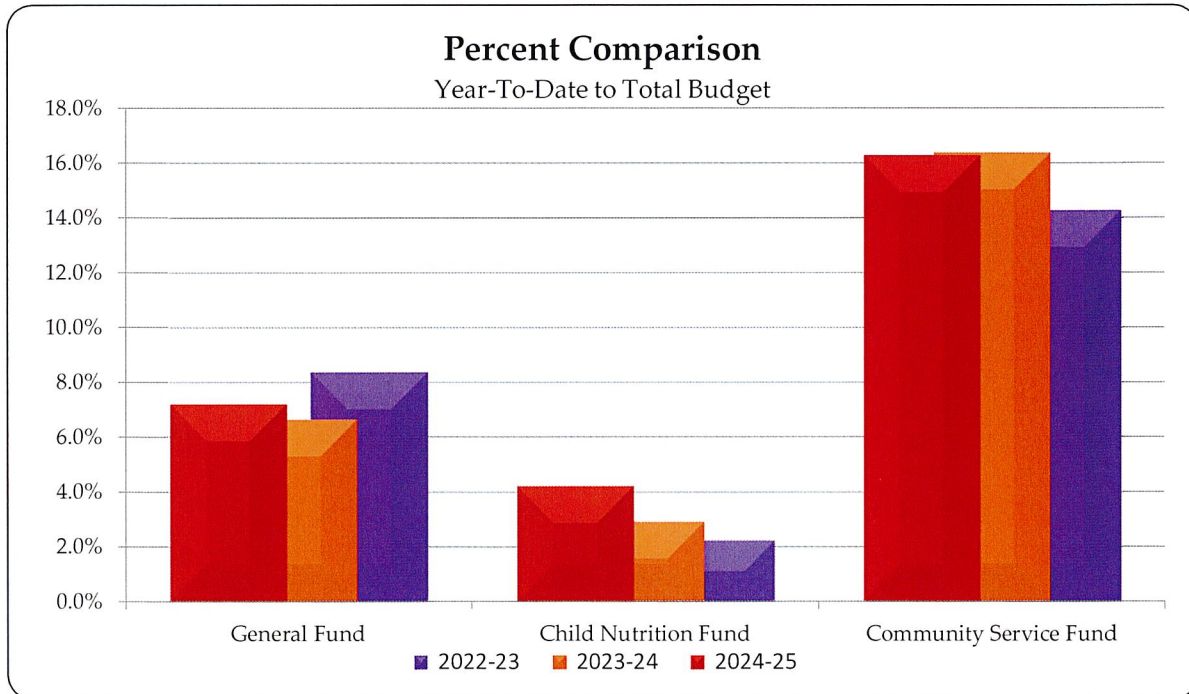




## STATEMENT OF EXPENDITURES

For the month ended August 31, 2024

| Fund                      | Year-<br>To-Date    | Budget               | YTD as % of Budget |             |              |
|---------------------------|---------------------|----------------------|--------------------|-------------|--------------|
|                           |                     |                      | 2024-25            | 2023-24     | 2022-23      |
| <b>General Fund</b>       |                     |                      |                    |             |              |
| Salaries                  | \$ 1,528,125        | \$ 37,881,246        | 4.0%               | 3.7%        | 4.0%         |
| Benefits                  | 708,888             | 15,380,900           | 4.6%               | 4.6%        | 4.5%         |
| Purchased Services        | 653,015             | 7,158,376            | 9.1%               | 5.9%        | 8.8%         |
| Supplies & Materials      | 599,529             | 3,119,344            | 19.2%              | 31.4%       | 34.4%        |
| Capital Expenditures      | 1,237,968           | 2,949,174            | 42.0%              | 27.8%       | 53.0%        |
| Other Expenses            | 98,305              | 359,142              | 27.4%              | 56.2%       | 22.7%        |
| <b>Total General Fund</b> | <b>\$ 4,825,830</b> | <b>\$ 66,848,182</b> | <b>7.2%</b>        | <b>6.6%</b> | <b>8.4%</b>  |
| Child Nutrition Fund      | \$ 116,101          | \$ 2,746,877         | 4.2%               | 2.9%        | 2.2%         |
| Community Service Fund    | 645,378             | 3,964,204            | 16.3%              | 16.4%       | 14.3%        |
| Debt Service Fund         | 789,242             | 4,027,009            | 19.6%              | 15.0%       | 16.6%        |
| Internal Service Fund     | 1,551,336           | 11,336,200           | 13.7%              | 17.4%       | 14.9%        |
| <b>Total All Funds</b>    | <b>\$ 7,927,887</b> | <b>\$ 88,922,472</b> | <b>8.9%</b>        | <b>9.0%</b> | <b>10.7%</b> |



## **RESOLUTION CANVASSING RETURNS OF VOTES OF SCHOOL DISTRICT GENERAL ELECTION**

Independent School District No. 659  
201 Orchard Street South  
Northfield, MN 55057

**BE IT RESOLVED** by the School Board of Independent School District No. 659, as follows:

1. It is hereby found, determined and declared that the general election of the voters of the district held on November 5, 2024, was in all respects duly and legally called and held.
2. Note: The school district election officer will input the total votes cast in the paragraph below when received from the county.

As specified in the attached Abstract and Return of Votes Cast, a total of (the school district election officer will input the total votes cast when received from the county) voters of the district voted at said election on the election of four school board members for four-year term vacancies on the board caused by expiration of term on the first Monday in January next following the general election; as follows:

|                         |                |
|-------------------------|----------------|
| Corey Butler            | 8,589 of votes |
| Claudia Gonzalez-George | 8,462 of votes |
| Maggie Epstein          | 8,106 of votes |
| Amy Goerwitz            | 7,529 of votes |

3. Corey Butler, Claudia Gonzalez-George, Maggie Epstein, and Amy Goerwitz, having received the highest number of votes, are elected to four-year terms beginning the first Monday in January, 2025.
4. The school district clerk is hereby authorized to certify the results of the election to the county auditor of each county in which the school district is located in whole or in part.

(Attach Abstract and Return of Votes Cast)



Abstract of Votes Cast  
Independent School District No. 659 (NORTHFIELD)  
State of Minnesota  
at the State General Election  
Held Tuesday, November 5, 2024

Compiled from the Official Returns.

Summary of Totals  
Independent School District No. 659 (NORTHFIELD)  
Tuesday, November 5, 2024 State General Election

**KEY TO PARTY ABBREVIATIONS**

NP - Nonpartisan

School Board Member (ISD #659) (Elect 4)

NP  
Maggie Epstein  
8106

NP  
Iris Lee  
3860

NP  
Claudia Gonzalez-George  
8462

NP  
Andreas Thurnheer  
2088

NP  
Tristan Cox  
6032

NP  
Corey Butler  
8589

NP  
Amy Goerwitz  
7529

WI  
WRITE-IN  
191

SCHOOL DISTRICT QUESTION 1 (ISD #659)

NP  
YES  
10067

NP  
NO  
6855

SCHOOL DISTRICT QUESTION 2 (ISD #659)

NP  
YES  
8991

NP  
NO  
7767

SCHOOL DISTRICT QUESTION 3 (ISD #659)

NP  
YES  
9445

NP  
NO  
7290

Detail of Election Results  
 Independent School District No. 659 (NORTHFIELD)  
 Tuesday, November 5, 2024 State General Election

Office Title: School Board Member (ISD #659) (Elect 4)

| Precinct                      | NP<br>Maggie Epstein | NP<br>Iris Lee | NP<br>Claudia Gonzalez-<br>George | NP<br>Andreas Thurnheer | NP<br>Tristan Cox |
|-------------------------------|----------------------|----------------|-----------------------------------|-------------------------|-------------------|
| 19 1410 : CASTLE ROCK TWP     | 42                   | 27             | 38                                | 20                      | 56                |
| 19 2110 : EUREKA TWP          | 23                   | 33             | 16                                | 33                      | 57                |
| 19 2310 : GREENVALE TWP       | 151                  | 177            | 162                               | 92                      | 254               |
| 19 3810 : NORTHFIELD W-3 P-2  | 522                  | 185            | 523                               | 91                      | 297               |
| 19 4310 : SCIOTA TWP          | 16                   | 21             | 20                                | 16                      | 37                |
| 19 4810 : WATERFORD TWP       | 99                   | 80             | 125                               | 50                      | 143               |
| 25 0040 : DENNISON            | 29                   | 30             | 29                                | 20                      | 55                |
| 25 0200 : WARSAW TWP.         | 10                   | 7              | 10                                | 4                       | 13                |
| 66 0005 : BRIDGEWATER TWP.    | 429                  | 324            | 480                               | 175                     | 488               |
| 66 0010 : CANNON CITY TWP.    | 23                   | 19             | 22                                | 6                       | 25                |
| 66 0012 : DENNISON CITY       | 1                    | 1              | 2                                 | 0                       | 3                 |
| 66 0015 : DUNDAS              | 461                  | 248            | 456                               | 146                     | 431               |
| 66 0020 : ERIN TWP.           | 1                    | 0              | 1                                 | 0                       | 3                 |
| 66 0055 : FOREST TWP.         | 159                  | 137            | 155                               | 102                     | 197               |
| 66 0080 : NORTHFIELD W-1 P-1  | 912                  | 160            | 932                               | 119                     | 264               |
| 66 0085 : NORTHFIELD W-1 P-2  | 1030                 | 467            | 1090                              | 214                     | 656               |
| 66 0090 : NORTHFIELD W-2 P-1  | 732                  | 397            | 778                               | 212                     | 641               |
| 66 0095 : NORTHFIELD W-2 P-2  | 672                  | 422            | 795                               | 221                     | 658               |
| 66 0105 : NORTHFIELD W-3 P-1  | 922                  | 347            | 953                               | 147                     | 557               |
| 66 0113 : NORTHFIELD W-4 P-1  | 801                  | 266            | 825                               | 120                     | 381               |
| 66 0114 : NORTHFIELD W-4 P-2  | 625                  | 131            | 587                               | 69                      | 186               |
| 66 0115 : NORTHFIELD TWP. P-1 | 27                   | 22             | 19                                | 10                      | 40                |
| 66 0116 : NORTHFIELD TWP. P-2 | 161                  | 94             | 180                               | 68                      | 196               |
| 66 0140 : WEBSTER TWP.        | 258                  | 265            | 264                               | 153                     | 394               |

Detail of Election Results  
 Independent School District No. 659 (NORTHFIELD)  
 Tuesday, November 5, 2024 State General Election

Office Title: School Board Member (ISD #659) (Elect 4)

Total: 8106 3860 8462 2088 6032

| Precinct                      | NP<br>Corey Butler | NP<br>Amy Goerwitz | WI<br>WRITE-IN |
|-------------------------------|--------------------|--------------------|----------------|
| 19 1410 : CASTLE ROCK TWP     | 49                 | 44                 | 1              |
| 19 2110 : EUREKA TWP          | 47                 | 27                 | 4              |
| 19 2310 : GREENVALE TWP       | 188                | 145                | 5              |
| 19 3810 : NORTHFIELD W-3 P-2  | 518                | 481                | 11             |
| 19 4310 : SCIOTA TWP          | 29                 | 17                 | 0              |
| 19 4810 : WATERFORD TWP       | 144                | 115                | 5              |
| 25 0040 : DENNISON            | 47                 | 30                 | 0              |
| 25 0200 : WARSAW TWP.         | 13                 | 8                  | 1              |
| 66 0005 : BRIDGEWATER TWP.    | 545                | 474                | 22             |
| 66 0010 : CANNON CITY TWP.    | 29                 | 20                 | 0              |
| 66 0012 : DENNISON CITY       | 2                  | 3                  | 0              |
| 66 0015 : DUNDAS              | 541                | 459                | 7              |
| 66 0020 : ERIN TWP.           | 1                  | 2                  | 0              |
| 66 0055 : FOREST TWP.         | 204                | 162                | 11             |
| 66 0080 : NORTHFIELD W-1 P-1  | 873                | 822                | 6              |
| 66 0085 : NORTHFIELD W-1 P-2  | 1057               | 936                | 20             |
| 66 0090 : NORTHFIELD W-2 P-1  | 784                | 680                | 15             |
| 66 0095 : NORTHFIELD W-2 P-2  | 775                | 664                | 11             |
| 66 0105 : NORTHFIELD W-3 P-1  | 888                | 732                | 25             |
| 66 0113 : NORTHFIELD W-4 P-1  | 817                | 708                | 13             |
| 66 0114 : NORTHFIELD W-4 P-2  | 448                | 528                | 7              |
| 66 0115 : NORTHFIELD TWP. P-1 | 35                 | 20                 | 4              |
| 66 0116 : NORTHFIELD TWP. P-2 | 223                | 158                | 3              |
| 66 0140 : WEBSTER TWP.        | 332                | 294                | 20             |

Detail of Election Results  
 Independent School District No. 659 (NORTHFIELD)  
 Tuesday, November 5, 2024 State General Election

Office Title: School Board Member (ISD #659) (Elect 4)

|        |             |             |            |
|--------|-------------|-------------|------------|
| Total: | <b>8589</b> | <b>7529</b> | <b>191</b> |
|--------|-------------|-------------|------------|

Office Title: SCHOOL DISTRICT QUESTION 1 (ISD #659)

| Precinct                      | NP<br>YES | NP<br>NO |
|-------------------------------|-----------|----------|
| 19 1410 : CASTLE ROCK TWP     | 45        | 68       |
| 19 2110 : EUREKA TWP          | 32        | 91       |
| 19 2310 : GREENVALE TWP       | 191       | 356      |
| 19 3810 : NORTHFIELD W-3 P-2  | 619       | 280      |
| 19 4310 : SCIOTA TWP          | 22        | 54       |
| 19 4810 : WATERFORD TWP       | 133       | 196      |
| 25 0040 : DENNISON            | 37        | 67       |
| 25 0200 : WARSAW TWP.         | 11        | 24       |
| 66 0005 : BRIDGEWATER TWP.    | 584       | 566      |
| 66 0010 : CANNON CITY TWP.    | 35        | 27       |
| 66 0012 : DENNISON CITY       | 0         | 9        |
| 66 0015 : DUNDAS              | 595       | 504      |
| 66 0020 : ERIN TWP.           | 1         | 3        |
| 66 0055 : FOREST TWP.         | 227       | 274      |
| 66 0080 : NORTHFIELD W-1 P-1  | 1165      | 221      |
| 66 0085 : NORTHFIELD W-1 P-2  | 1182      | 648      |
| 66 0090 : NORTHFIELD W-2 P-1  | 885       | 686      |
| 66 0095 : NORTHFIELD W-2 P-2  | 858       | 714      |
| 66 0105 : NORTHFIELD W-3 P-1  | 1080      | 569      |
| 66 0113 : NORTHFIELD W-4 P-1  | 903       | 470      |
| 66 0114 : NORTHFIELD W-4 P-2  | 888       | 127      |
| 66 0115 : NORTHFIELD TWP. P-1 | 26        | 44       |
| 66 0116 : NORTHFIELD TWP. P-2 | 206       | 230      |

Detail of Election Results  
 Independent School District No. 659 (NORTHFIELD)  
 Tuesday, November 5, 2024 State General Election

Office Title: SCHOOL DISTRICT QUESTION 1 (ISD #659)

| <b>Precinct</b>        | NP<br>YES    | NP<br>NO    |
|------------------------|--------------|-------------|
| 66 0140 : WEBSTER TWP. | 342          | 627         |
| <b>Total:</b>          | <b>10067</b> | <b>6855</b> |

Office Title: SCHOOL DISTRICT QUESTION 2 (ISD #659)

| <b>Precinct</b>              | NP<br>YES | NP<br>NO |
|------------------------------|-----------|----------|
| 19 1410 : CASTLE ROCK TWP    | 47        | 65       |
| 19 2110 : EUREKA TWP         | 26        | 93       |
| 19 2310 : GREENVALE TWP      | 191       | 350      |
| 19 3810 : NORTHFIELD W-3 P-2 | 583       | 308      |
| 19 4310 : SCIOTA TWP         | 19        | 55       |
| 19 4810 : WATERFORD TWP      | 126       | 198      |
| 25 0040 : DENNISON           | 28        | 76       |
| 25 0200 : WARSAW TWP.        | 8         | 25       |
| 66 0005 : BRIDGEWATER TWP.   | 522       | 615      |
| 66 0010 : CANNON CITY TWP.   | 33        | 30       |
| 66 0012 : DENNISON CITY      | 0         | 8        |
| 66 0015 : DUNDAS             | 529       | 558      |
| 66 0020 : ERIN TWP.          | 2         | 2        |
| 66 0055 : FOREST TWP.        | 209       | 289      |
| 66 0080 : NORTHFIELD W-1 P-1 | 1056      | 299      |
| 66 0085 : NORTHFIELD W-1 P-2 | 1066      | 755      |
| 66 0090 : NORTHFIELD W-2 P-1 | 772       | 783      |
| 66 0095 : NORTHFIELD W-2 P-2 | 746       | 822      |
| 66 0105 : NORTHFIELD W-3 P-1 | 954       | 692      |

Detail of Election Results  
 Independent School District No. 659 (NORTHFIELD)  
 Tuesday, November 5, 2024 State General Election

Office Title: SCHOOL DISTRICT QUESTION 2 (ISD #659)

| <b>Precinct</b>               | NP<br>YES   | NP<br>NO    |
|-------------------------------|-------------|-------------|
| 66 0113 : NORTHFIELD W-4 P-1  | 802         | 555         |
| 66 0114 : NORTHFIELD W-4 P-2  | 756         | 242         |
| 66 0115 : NORTHFIELD TWP. P-1 | 25          | 45          |
| 66 0116 : NORTHFIELD TWP. P-2 | 187         | 247         |
| 66 0140 : WEBSTER TWP.        | 304         | 655         |
| <b>Total:</b>                 | <b>8991</b> | <b>7767</b> |

Office Title: SCHOOL DISTRICT QUESTION 3 (ISD #659)

| <b>Precinct</b>              | NP<br>YES | NP<br>NO |
|------------------------------|-----------|----------|
| 19 1410 : CASTLE ROCK TWP    | 40        | 73       |
| 19 2110 : EUREKA TWP         | 32        | 86       |
| 19 2310 : GREENVALE TWP      | 199       | 339      |
| 19 3810 : NORTHFIELD W-3 P-2 | 577       | 313      |
| 19 4310 : SCIOTA TWP         | 21        | 53       |
| 19 4810 : WATERFORD TWP      | 130       | 193      |
| 25 0040 : DENNISON           | 32        | 71       |
| 25 0200 : WARSAW TWP.        | 9         | 23       |
| 66 0005 : BRIDGEWATER TWP.   | 540       | 601      |
| 66 0010 : CANNON CITY TWP.   | 30        | 33       |
| 66 0012 : DENNISON CITY      | 0         | 9        |
| 66 0015 : DUNDAS             | 534       | 554      |
| 66 0020 : ERIN TWP.          | 1         | 3        |
| 66 0055 : FOREST TWP.        | 214       | 286      |
| 66 0080 : NORTHFIELD W-1 P-1 | 1117      | 238      |

Detail of Election Results  
Independent School District No. 659 (NORTHFIELD)  
Tuesday, November 5, 2024 State General Election

Office Title: SCHOOL DISTRICT QUESTION 3 (ISD #659)

| <b>Precinct</b>               | <b>NP<br/>YES</b> | <b>NP<br/>NO</b> |
|-------------------------------|-------------------|------------------|
| 66 0085 : NORTHFIELD W-1 P-2  | 1093              | 726              |
| 66 0090 : NORTHFIELD W-2 P-1  | 825               | 723              |
| 66 0095 : NORTHFIELD W-2 P-2  | 817               | 747              |
| 66 0105 : NORTHFIELD W-3 P-1  | 1027              | 609              |
| 66 0113 : NORTHFIELD W-4 P-1  | 864               | 505              |
| 66 0114 : NORTHFIELD W-4 P-2  | 819               | 176              |
| 66 0115 : NORTHFIELD TWP. P-1 | 26                | 44               |
| 66 0116 : NORTHFIELD TWP. P-2 | 176               | 256              |
| 66 0140 : WEBSTER TWP.        | 322               | 629              |
| <b>Total:</b>                 | <b>9445</b>       | <b>7290</b>      |



We, the school board members of Independent School District No. 659 (NORTHFIELD), certify that we have canvassed the returns of the State General Election held on Tuesday, November 5, 2024 and have herein specified the names of any candidates receiving votes and the number of votes received by each candidate, and have herein specified the number of votes for and against any ballot questions voted on in this election.

As appears by the returns of the election precincts voting in this election, duly returned to, filed, opened, and canvassed, and now remaining on file in the office of the clerk of Independent School District No. 659 (NORTHFIELD).

Witness our official signature at \_\_\_\_\_ in \_\_\_\_\_ County this \_\_\_\_\_ day of \_\_\_\_\_, 2024.

\_\_\_\_\_  
School Board Member

\_\_\_\_\_  
School Board Member

\_\_\_\_\_  
School Board Member

\_\_\_\_\_  
School Board Member

\_\_\_\_\_  
School Board Member

\_\_\_\_\_  
School Board Member

\_\_\_\_\_  
School Board Member

State of Minnesota  
Independent School District No. 659 (NORTHFIELD)

I, \_\_\_\_\_, Clerk of the Independent School District No. 659 (NORTHFIELD) do hereby certify the within and foregoing \_\_\_\_\_ pages to be a full and correct copy of the original abstract and return of the votes cast in the Independent School District No. 659 (NORTHFIELD) State General Election held on Tuesday, November 5, 2024.

Witness my hand and official seal of office this \_\_\_\_\_ day of \_\_\_\_\_, 2024.

\_\_\_\_\_

Municipality Bridgewater  
Ward \_\_\_\_\_ Precinct \_\_\_\_\_  
County Rice



|  | AB/MB | RC DB | NF DB | TOTAL |
|--|-------|-------|-------|-------|
|--|-------|-------|-------|-------|

|   |              |              |              |              |
|---|--------------|--------------|--------------|--------------|
| Number of election judges who worked in this precinct<br>(Total number of judges for the precinct for the entire day who signed the oath) | 1. <u>10</u> | 1. <u>10</u> | 1. <u>10</u> | 1. <u>10</u> |
|---|--------------|--------------|--------------|--------------|

|  |             |             |             |             |
|--|-------------|-------------|-------------|-------------|
| Number of voting booths in this precinct<br>(Total number of standing/sitting booths or other types of voting spaces available in the polling place) | 2. <u>6</u> | 2. <u>6</u> | 2. <u>6</u> | 2. <u>6</u> |
|--|-------------|-------------|-------------|-------------|

REGISTRATION STATISTICS

|  |                 |                 |                 |                 |
|--|-----------------|-----------------|-----------------|-----------------|
| Number of persons registered at 7 a.m.<br>(This number is found on the Election Precinct Certification Form located in your Head Judge Book) | *3. <u>1352</u> | *3. <u>1352</u> | *3. <u>1352</u> | *3. <u>1352</u> |
|--|-----------------|-----------------|-----------------|-----------------|

|   |              |              |              |               |
|---|--------------|--------------|--------------|---------------|
| Number of new registrants on election day<br>(This number is found on the Summary Report you printed from the poll pad) | *4. <u>2</u> | *4. <u>3</u> | *4. <u>9</u> | *4. <u>14</u> |
|---|--------------|--------------|--------------|---------------|

BALLOTS DELIVERED TO THE PRECINCT

|   |             |             |             |             |
|---|-------------|-------------|-------------|-------------|
| Ballots delivered as certified by the clerk<br>(This number is found on the Election Precinct Certification Form located in your Head Judge Book) | 5. <u>0</u> | 5. <u>0</u> | 5. <u>0</u> | 5. <u>0</u> |
|---|-------------|-------------|-------------|-------------|

|  |             |             |             |             |
|--|-------------|-------------|-------------|-------------|
| Ballot count adjustments from incident log (+/-)<br>(Check your incident log for any differences found when judges counted the number of ballots in each opened package and any other notations that would affect the number of ballots for your precinct) | 6. <u>0</u> | 6. <u>0</u> | 6. <u>0</u> | 6. <u>0</u> |
|--|-------------|-------------|-------------|-------------|

|   |             |             |             |             |
|---|-------------|-------------|-------------|-------------|
| Number of unofficial ballots made<br>(This number will most likely be "0" unless you ran out of official ballots) | 7. <u>0</u> | 7. <u>0</u> | 7. <u>0</u> | 7. <u>0</u> |
|---|-------------|-------------|-------------|-------------|

|                                      |               |              |               |               |
|--------------------------------------|---------------|--------------|---------------|---------------|
| Number of absentee ballots delivered | 8. <u>232</u> | 8. <u>46</u> | 8. <u>185</u> | 8. <u>463</u> |
|--------------------------------------|---------------|--------------|---------------|---------------|

|   |              |             |              |              |
|---|--------------|-------------|--------------|--------------|
| Total number of ballots delivered to precinct (5+6+7+8 = A) | A <u>232</u> | A <u>46</u> | A <u>185</u> | A <u>463</u> |
|---|--------------|-------------|--------------|--------------|

BALLOTS NOT IN THE BALLOT BOX

|   |              |              |              |              |
|---|--------------|--------------|--------------|--------------|
| Number of spoiled ballots<br>(Number of ballots in the spoiled ballot envelope) | *9. <u>3</u> | *9. <u>0</u> | *9. <u>2</u> | *9. <u>5</u> |
|---|--------------|--------------|--------------|--------------|

|   |                |               |               |                |
|---|----------------|---------------|---------------|----------------|
| Number of originals for which duplicates made<br>(Number of ballots in the duplicate ballot envelope) | *10. <u>12</u> | *10. <u>0</u> | *10. <u>0</u> | *10. <u>12</u> |
|---|----------------|---------------|---------------|----------------|

|                              |               |               |               |               |
|------------------------------|---------------|---------------|---------------|---------------|
| Number of rejected absentees | *11. <u>4</u> | *11. <u>0</u> | *11. <u>0</u> | *11. <u>4</u> |
|------------------------------|---------------|---------------|---------------|---------------|

|   |              |              |              |              |
|---|--------------|--------------|--------------|--------------|
| Number of unused ballots<br>(Count the number of unused ballots at the end of the day, including those ballots in unopened packages plus ballots not used from opened packages) | 12. <u>0</u> | 12. <u>0</u> | 12. <u>0</u> | 12. <u>0</u> |
|---|--------------|--------------|--------------|--------------|

|  |             |            |            |             |
|--|-------------|------------|------------|-------------|
| Total number of ballots not in the ballot box (9+10+11+12 = B) | B <u>19</u> | B <u>0</u> | B <u>2</u> | B <u>21</u> |
|--|-------------|------------|------------|-------------|

BALLOTS CAST IN THE BALLOT BOX

|  |               |               |               |               |
|--|---------------|---------------|---------------|---------------|
| Number of signatures on electronic roster (preregistered + EDR)<br>(This number is found on the Summary Report you printed from the poll pad and should equal the Public Count and Total Paper Sheets on the DS200 Results Tape) | *13. <u>0</u> | *13. <u>0</u> | *13. <u>0</u> | *13. <u>0</u> |
|--|---------------|---------------|---------------|---------------|

|   |                 |                |                 |                 |
|---|-----------------|----------------|-----------------|-----------------|
| Number of accepted regular, military and overseas absentee & mail ballots | *14. <u>209</u> | *14. <u>46</u> | *14. <u>183</u> | *14. <u>438</u> |
|---|-----------------|----------------|-----------------|-----------------|

|  |               |               |               |               |
|--|---------------|---------------|---------------|---------------|
| Number of accepted federal only absentee ballots | *15. <u>4</u> | *15. <u>0</u> | *15. <u>0</u> | *15. <u>4</u> |
|--|---------------|---------------|---------------|---------------|

|   |               |               |               |               |
|---|---------------|---------------|---------------|---------------|
| Number of accepted presidential only absentee ballots | *16. <u>0</u> | *16. <u>0</u> | *16. <u>0</u> | *16. <u>0</u> |
|---|---------------|---------------|---------------|---------------|

|  |              |             |              |              |
|--|--------------|-------------|--------------|--------------|
| Total number of ballots in the ballot box (= persons voting) (13+14+15+16 = C) | C <u>213</u> | C <u>46</u> | C <u>183</u> | C <u>442</u> |
|--|--------------|-------------|--------------|--------------|

BALLOTS RETURNED FROM THE PRECINCT

|  |              |             |              |              |
|--|--------------|-------------|--------------|--------------|
| Ballots returned from the precinct (B + C = D) | D <u>232</u> | D <u>46</u> | D <u>185</u> | D <u>463</u> |
|--|--------------|-------------|--------------|--------------|

|  |            |            |            |            |
|--|------------|------------|------------|------------|
| Difference for auditor/clerk notation on delivery record (A - D = E)<br>(This number should be "0"; if not, re-check your figures. If still not "0" and you are unable to reconcile, contact the Property Tax & Elections Office.) | E <u>0</u> | E <u>0</u> | E <u>0</u> | E <u>0</u> |
|--|------------|------------|------------|------------|

\*Entered into ERS

Municipality Cannon City  
Ward \_\_\_\_\_ Precinct \_\_\_\_\_  
County Rice

|  | AB/MB          | RC DB          | NF DB          | TOTAL           |
|--|----------------|----------------|----------------|-----------------|
| Number of election judges who worked in this precinct<br>(Total number of judges for the precinct for the entire day who signed the oath)  | 1. <u>10</u>   | 1. <u>10</u>   | 1. <u>10</u>   | 1. <u>10</u>    |
| Number of voting booths in this precinct<br>(Total number of standing/sitting booths or other types of voting spaces available in the polling place)   | 2. <u>6</u>    | 2. <u>6</u>    | 2. <u>6</u>    | 2. <u>6</u>     |
| <b>REGISTRATION STATISTICS</b>   |                |                |                |                 |
| Number of persons registered at 7 a.m.<br>(This number is found on the Election Precinct Certification Form located in your Head Judge Book)   | *3. <u>884</u> | *3. <u>884</u> | *3. <u>884</u> | *3. <u>884</u>  |
| Number of new registrants on election day<br>(This number is found on the Summary Report you printed from the poll pad)  | *4. <u>3</u>   | *4. <u>6</u>   | *4. <u>0</u>   | *4. <u>9</u>    |
| <b>BALLOTS DELIVERED TO THE PRECINCT</b>   |                |                |                |                 |
| Ballots delivered as certified by the clerk<br>(This number is found on the Election Precinct Certification Form located in your Head Judge Book)  | 5. <u>0</u>    | 5. <u>0</u>    | 5. <u>0</u>    | 5. <u>0</u>     |
| Ballot count adjustments from incident log (+/-)<br>(Check your incident log for any differences found when judges counted the number of ballots in each opened package and any other notations that would affect the number of ballots for your precinct) | 6. <u>0</u>    | 6. <u>0</u>    | 6. <u>0</u>    | 6. <u>0</u>     |
| Number of unofficial ballots made<br>(This number will most likely be "0" unless you ran out of official ballots)  | 7. <u>0</u>    | 7. <u>0</u>    | 7. <u>0</u>    | 7. <u>0</u>     |
| Number of absentee ballots delivered   | 8. <u>87</u>   | 8. <u>85</u>   | 8. <u>15</u>   | 8. <u>187</u>   |
| Total number of ballots delivered to precinct (5+6+7+8 = A)  | A <u>87</u>    | A <u>85</u>    | A <u>15</u>    | A <u>187</u>    |
| <b>BALLOTS NOT IN THE BALLOT BOX</b>   |                |                |                |                 |
| Number of spoiled ballots<br>(Number of ballots in the spoiled ballot envelope)  | *9. <u>1</u>   | *9. <u>0</u>   | *9. <u>0</u>   | *9. <u>1</u>    |
| Number of originals for which duplicates made<br>(Number of ballots in the duplicate ballot envelope)  | *10. <u>3</u>  | *10. <u>0</u>  | *10. <u>0</u>  | *10. <u>3</u>   |
| Number of rejected absentees   | *11. <u>6</u>  | *11. <u>0</u>  | *11. <u>0</u>  | *11. <u>6</u>   |
| Number of unused ballots<br>(Count the number of unused ballots at the end of the day, including those ballots in unopened packages plus ballots not used from opened packages)  | 12. <u>0</u>   | 12. <u>0</u>   | 12. <u>0</u>   | 12. <u>0</u>    |
| Total number of ballots not in the ballot box (9+10+11+12 = B)   | B <u>10</u>    | B <u>0</u>     | B <u>0</u>     | B <u>10</u>     |
| <b>BALLOTS CAST IN THE BALLOT BOX</b>  |                |                |                |                 |
| Number of signatures on electronic roster (preregistered + EDR)<br>(This number is found on the Summary Report you printed from the poll pad and should equal the Public Count and Total Paper Sheets on the DS200 Results Tape)                           | *13. <u>0</u>  | *13. <u>0</u>  | *13. <u>0</u>  | *13. <u>0</u>   |
| Number of accepted regular, military and overseas absentee & mail ballots  | *14. <u>76</u> | *14. <u>85</u> | *14. <u>15</u> | *14. <u>176</u> |
| Number of accepted federal only absentee ballots   | *15. <u>1</u>  | *15. <u>0</u>  | *15. <u>0</u>  | *15. <u>1</u>   |
| Number of accepted presidential only absentee ballots  | *16. <u>0</u>  | *16. <u>0</u>  | *16. <u>0</u>  | *16. <u>0</u>   |
| Total number of ballots in the ballot box (= persons voting) (13+14+15+16 = C)   | C <u>77</u>    | C <u>85</u>    | C <u>15</u>    | C <u>177</u>    |
| <b>BALLOTS RETURNED FROM THE PRECINCT</b>  |                |                |                |                 |
| Ballots returned from the precinct (B + C = D)   | D <u>87</u>    | D <u>85</u>    | D <u>15</u>    | D <u>187</u>    |
| Difference for auditor/clerk notation on delivery record (A - D = E)<br>(This number should be "0"; if not, re-check your figures. If still not "0" and you are unable to reconcile, contact the Property Tax & Elections Office.)                         | E <u>0</u>     | E <u>0</u>     | E <u>0</u>     | E <u>0</u>      |

\*Entered into ERS

Precinct Summary Statement  
State General Election: November 5, 2024

Municipality Dermison

Ward \_\_\_\_\_ Precinct \_\_\_\_\_

County Rice

Number of election judges who worked in this precinct  
(Total number of judges for the precinct for the entire day who signed the oath)

1. 10

1. 10

1. 10

1. 10

Number of voting booths in this precinct  
(Total number of standing/sitting booths or other types of voting spaces available in the polling place)

2. 6

2. 6

2. 6

2. 6

REGISTRATION STATISTICS

Number of persons registered at 7 a.m.  
(This number is found on the Election Precinct Certification Form located in your Head Judge Book)

\*3. 11

\*3. 11

\*3. 11

\*3. 11

Number of new registrants on election day  
(This number is found on the Summary Report you printed from the poll pad)

\*4. 0

\*4. 0

\*4. 0

\*4. 0

BALLOTS DELIVERED TO THE PRECINCT

Ballots delivered as certified by the clerk  
(This number is found on the Election Precinct Certification Form located in your Head Judge Book)

5. 0

5. 0

5. 0

5. 0

Ballot count adjustments from incident log (+/-)  
(Check your incident log for any differences found when judges counted the number of ballots in each opened package and any other notations that would affect the number of ballots for your precinct)

6. 0

6. 0

6. 0

6. 0

Number of unofficial ballots made  
(This number will most likely be "0" unless you ran out of official ballots)

7. 0

7. 0

7. 0

7. 0

Number of absentee ballots delivered

8. 12

8. 1

8. 0

8. 13

Total number of ballots delivered to precinct (5+6+7+8 = A)

A 12

A 1

A 0

A 13

BALLOTS NOT IN THE BALLOT BOX

Number of spoiled ballots  
(Number of ballots in the spoiled ballot envelope)

\*9. 0

\*9. 0

\*9. 0

\*9. 0

Number of originals for which duplicates made  
(Number of ballots in the duplicate ballot envelope)

\*10. 3

\*10. 0

\*10. 0

\*10. 3

Number of rejected absentees

\*11. 1

\*11. 0

\*11. 0

\*11. 1

Number of unused ballots  
(Count the number of unused ballots at the end of the day, including those ballots in unopened packages plus ballots not used from opened packages)

12. 0

12. 0

12. 0

12. 0

Total number of ballots not in the ballot box (9+10+11+12 = B)

B 4

B 0

B 0

B 4

BALLOTS CAST IN THE BALLOT BOX

Number of signatures on electronic roster (preregistered + EDR)  
(This number is found on the Summary Report you printed from the poll pad and should equal the Public Count and Total Paper Sheets on the DS200 Results Tape)

\*13. 0

\*13. 0

\*13. 0

\*13. 0

Number of accepted regular, military and overseas absentee & mail ballots

\*14. 8

\*14. 1

\*14. 0

\*14. 9

Number of accepted federal only absentee ballots

\*15. 0

\*15. 0

\*15. 0

\*15. 0

Number of accepted presidential only absentee ballots

\*16. 0

\*16. 0

\*16. 0

\*16. 0

Total number of ballots in the ballot box (= persons voting) (13+14+15+16 = C)

C 8

C 1

C 0

C 9

BALLOTS RETURNED FROM THE PRECINCT

Ballots returned from the precinct (B + C = D)

D 12

D 1

D 0

D 13

Difference for auditor/clerk notation on delivery record (A - D = E)  
(This number should be "0"; if not, re-check your figures. If still not "0" and you are unable to reconcile, contact the Property Tax & Elections Office.)

E 0

E 0

E 0

E 0

Precinct Summary Statement  
State General Election: November 5, 2024

Municipality Dundas

Ward \_\_\_\_\_ Precinct \_\_\_\_\_

County Rice

|  | AB/MB | RC DB | NF DB | TOTAL |
|--|-------|-------|-------|-------|
|--|-------|-------|-------|-------|

|   |              |              |              |              |
|---|--------------|--------------|--------------|--------------|
| Number of election judges who worked in this precinct<br>(Total number of judges for the precinct for the entire day who signed the oath) | 1. <u>10</u> | 1. <u>10</u> | 1. <u>10</u> | 1. <u>10</u> |
|---|--------------|--------------|--------------|--------------|

|  |             |             |             |             |
|--|-------------|-------------|-------------|-------------|
| Number of voting booths in this precinct<br>(Total number of standing/sitting booths or other types of voting spaces available in the polling place) | 2. <u>6</u> | 2. <u>6</u> | 2. <u>6</u> | 2. <u>6</u> |
|--|-------------|-------------|-------------|-------------|

REGISTRATION STATISTICS

|  |                 |                 |                 |                 |
|--|-----------------|-----------------|-----------------|-----------------|
| Number of persons registered at 7 a.m.<br>(This number is found on the Election Precinct Certification Form located in your Head Judge Book) | *3. <u>1250</u> | *3. <u>1250</u> | *3. <u>1250</u> | *3. <u>1250</u> |
|--|-----------------|-----------------|-----------------|-----------------|

|   |               |              |              |               |
|---|---------------|--------------|--------------|---------------|
| Number of new registrants on election day<br>(This number is found on the Summary Report you printed from the poll pad) | *4. <u>10</u> | *4. <u>0</u> | *4. <u>3</u> | *4. <u>13</u> |
|---|---------------|--------------|--------------|---------------|

BALLOTS DELIVERED TO THE PRECINCT

|   |             |             |             |             |
|---|-------------|-------------|-------------|-------------|
| Ballots delivered as certified by the clerk<br>(This number is found on the Election Precinct Certification Form located in your Head Judge Book) | 5. <u>0</u> | 5. <u>0</u> | 5. <u>0</u> | 5. <u>0</u> |
|---|-------------|-------------|-------------|-------------|

|  |             |             |             |             |
|--|-------------|-------------|-------------|-------------|
| Ballot count adjustments from incident log (+/-)<br>(Check your incident log for any differences found when judges counted the number of ballots in each opened package and any other notations that would affect the number of ballots for your precinct) | 6. <u>0</u> | 6. <u>0</u> | 6. <u>0</u> | 6. <u>0</u> |
|--|-------------|-------------|-------------|-------------|

|   |             |             |             |             |
|---|-------------|-------------|-------------|-------------|
| Number of unofficial ballots made<br>(This number will most likely be "0" unless you ran out of official ballots) | 7. <u>0</u> | 7. <u>0</u> | 7. <u>0</u> | 7. <u>0</u> |
|---|-------------|-------------|-------------|-------------|

|   |               |              |               |               |
|---|---------------|--------------|---------------|---------------|
| Number of absentee ballots delivered                        | 8. <u>213</u> | 8. <u>11</u> | 8. <u>175</u> | 8. <u>399</u> |
| Total number of ballots delivered to precinct (5+6+7+8 = A) | A <u>213</u>  | A <u>11</u>  | A <u>175</u>  | A <u>399</u>  |

BALLOTS NOT IN THE BALLOT BOX

|   |              |              |              |              |
|---|--------------|--------------|--------------|--------------|
| Number of spoiled ballots<br>(Number of ballots in the spoiled ballot envelope) | *9. <u>2</u> | *9. <u>0</u> | *9. <u>2</u> | *9. <u>4</u> |
|---|--------------|--------------|--------------|--------------|

|   |               |               |               |               |
|---|---------------|---------------|---------------|---------------|
| Number of originals for which duplicates made<br>(Number of ballots in the duplicate ballot envelope) | *10. <u>5</u> | *10. <u>0</u> | *10. <u>0</u> | *10. <u>5</u> |
|---|---------------|---------------|---------------|---------------|

|                              |               |               |               |               |
|------------------------------|---------------|---------------|---------------|---------------|
| Number of rejected absentees | *11. <u>8</u> | *11. <u>0</u> | *11. <u>0</u> | *11. <u>8</u> |
|------------------------------|---------------|---------------|---------------|---------------|

|   |              |              |              |              |
|---|--------------|--------------|--------------|--------------|
| Number of unused ballots<br>(Count the number of unused ballots at the end of the day, including those ballots in unopened packages plus ballots not used from opened packages) | 12. <u>0</u> | 12. <u>0</u> | 12. <u>0</u> | 12. <u>0</u> |
| Total number of ballots not in the ballot box (9+10+11+12 = B)  | B <u>15</u>  | B <u>0</u>   | B <u>2</u>   | B <u>17</u>  |

BALLOTS CAST IN THE BALLOT BOX

|  |               |               |               |               |
|--|---------------|---------------|---------------|---------------|
| Number of signatures on electronic roster (preregistered + EDR)<br>(This number is found on the Summary Report you printed from the poll pad and should equal the Public Count and Total Paper Sheets on the DS200 Results Tape) | *13. <u>0</u> | *13. <u>0</u> | *13. <u>0</u> | *13. <u>0</u> |
|--|---------------|---------------|---------------|---------------|

|   |                 |                |                 |                 |
|---|-----------------|----------------|-----------------|-----------------|
| Number of accepted regular, military and overseas absentee & mail ballots | *14. <u>196</u> | *14. <u>11</u> | *14. <u>173</u> | *14. <u>380</u> |
|---|-----------------|----------------|-----------------|-----------------|

|  |               |               |               |               |
|--|---------------|---------------|---------------|---------------|
| Number of accepted federal only absentee ballots | *15. <u>2</u> | *15. <u>0</u> | *15. <u>0</u> | *15. <u>2</u> |
|--|---------------|---------------|---------------|---------------|

|  |               |               |               |               |
|--|---------------|---------------|---------------|---------------|
| Number of accepted presidential only absentee ballots                          | *16. <u>0</u> | *16. <u>0</u> | *16. <u>0</u> | *16. <u>0</u> |
| Total number of ballots in the ballot box (= persons voting) (13+14+15+16 = C) | C <u>198</u>  | C <u>11</u>   | C <u>173</u>  | C <u>382</u>  |

BALLOTS RETURNED FROM THE PRECINCT

|  |              |             |              |              |
|--|--------------|-------------|--------------|--------------|
| Ballots returned from the precinct (B + C = D) | D <u>213</u> | D <u>11</u> | D <u>173</u> | D <u>399</u> |
|--|--------------|-------------|--------------|--------------|

|  |            |            |            |            |
|--|------------|------------|------------|------------|
| Difference for auditor/clerk notation on delivery record (A - D = E)<br>(This number should be "0"; if not, re-check your figures. If still not "0" and you are unable to reconcile, contact the Property Tax & Elections Office.) | E <u>0</u> | E <u>0</u> | E <u>0</u> | E <u>0</u> |
|--|------------|------------|------------|------------|

\*Entered into ERS

Precinct Summary Statement  
State General Election: November 5, 2024

Municipality Erin Town

Ward \_\_\_\_\_ Precinct \_\_\_\_\_

County Rice AB/MB RC DB NF DB TOTAL

Number of election judges who worked in this precinct (Total number of judges for the precinct for the entire day who signed the oath) 1. 10 1. 10 1. 10 1. 10

Number of voting booths in this precinct (Total number of standing/sitting booths or other types of voting spaces available in the polling place) 2. 6 2. 6 2. 6 2. 6

REGISTRATION STATISTICS

Number of persons registered at 7 a.m. (This number is found on the Election Precinct Certification Form located in your Head Judge Book) \*3. 645 \*3. 645 \*3. 645 \*3. 645

Number of new registrants on election day (This number is found on the Summary Report you printed from the poll pad) \*4. 1 \*4. 2 \*4. 0 \*4. 3

BALLOTS DELIVERED TO THE PRECINCT

Ballots delivered as certified by the clerk (This number is found on the Election Precinct Certification Form located in your Head Judge Book) 5. 0 5. 0 5. 0 5. 0

Ballot count adjustments from incident log (+/-) (Check your incident log for any differences found when judges counted the number of ballots in each opened package and any other notations that would affect the number of ballots for your precinct) 6. 0 6. 0 6. 0 6. 0

Number of unofficial ballots made (This number will most likely be "0" unless you ran out of official ballots) 7. 0 7. 0 7. 0 7. 0

Number of absentee ballots delivered 8. 47 8. 56 8. 11 8. 114

Total number of ballots delivered to precinct (5+6+7+8 = A) A 47 A 56 A 11 A 114

BALLOTS NOT IN THE BALLOT BOX

Number of spoiled ballots (Number of ballots in the spoiled ballot envelope) \*9. 1 \*9. 0 \*9. 2 \*9. 3

Number of originals for which duplicates made (Number of ballots in the duplicate ballot envelope) \*10. 4 \*10. 0 \*10. 0 \*10. 4

Number of rejected absentees \*11. 0 \*11. 0 \*11. 0 \*11. 0

Number of unused ballots (Count the number of unused ballots at the end of the day, including those ballots in unopened packages plus ballots not used from opened packages) 12. 0 12. 0 12. 0 12. 0

Total number of ballots not in the ballot box (9+10+11+12 = B) B 5 B 0 B 2 B 7

BALLOTS CAST IN THE BALLOT BOX

Number of signatures on electronic roster (preregistered + EDR) (This number is found on the Summary Report you printed from the poll pad and should equal the Public Count and Total Paper Sheets on the DS200 Results Tape) \*13. 0 \*13. 0 \*13. 0 \*13. 0

Number of accepted regular, military and overseas absentee & mail ballots \*14. 42 \*14. 56 \*14. 9 \*14. 107

Number of accepted federal only absentee ballots \*15. 0 \*15. 0 \*15. 0 \*15. 0

Number of accepted presidential only absentee ballots \*16. 0 \*16. 0 \*16. 0 \*16. 0

Total number of ballots in the ballot box (= persons voting) (13+14+15+16 = C) C 42 C 56 C 9 C 107

BALLOTS RETURNED FROM THE PRECINCT

Ballots returned from the precinct (B + C = D) D 47 D 56 D 11 D 114

Difference for auditor/clerk notation on delivery record (A - D = E) (This number should be "0"; if not, re-check your figures. If still not "0" and you are unable to reconcile, contact the Property Tax & Elections Office.) E 0 E 0 E 0 E 0

\*Entered into ERS

Precinct Summary Statement  
State General Election: November 5, 2024

Municipality Forest Town

Ward \_\_\_\_\_ Precinct \_\_\_\_\_

County Rice

|  | AB/MB | RC DB | NF DB | TOTAL |
|--|-------|-------|-------|-------|
|--|-------|-------|-------|-------|

|   |              |              |              |              |
|---|--------------|--------------|--------------|--------------|
| Number of election judges who worked in this precinct<br>(Total number of judges for the precinct for the entire day who signed the oath) | 1. <u>10</u> | 1. <u>10</u> | 1. <u>10</u> | 1. <u>10</u> |
|---|--------------|--------------|--------------|--------------|

|  |             |             |             |             |
|--|-------------|-------------|-------------|-------------|
| Number of voting booths in this precinct<br>(Total number of standing/sitting booths or other types of voting spaces available in the polling place) | 2. <u>6</u> | 2. <u>6</u> | 2. <u>6</u> | 2. <u>6</u> |
|--|-------------|-------------|-------------|-------------|

REGISTRATION STATISTICS

|  |                |                |                |                |
|--|----------------|----------------|----------------|----------------|
| Number of persons registered at 7 a.m.<br>(This number is found on the Election Precinct Certification Form located in your Head Judge Book) | *3. <u>989</u> | *3. <u>989</u> | *3. <u>989</u> | *3. <u>989</u> |
|--|----------------|----------------|----------------|----------------|

|   |              |              |              |               |
|---|--------------|--------------|--------------|---------------|
| Number of new registrants on election day<br>(This number is found on the Summary Report you printed from the poll pad) | *4. <u>6</u> | *4. <u>8</u> | *4. <u>4</u> | *4. <u>18</u> |
|---|--------------|--------------|--------------|---------------|

BALLOTS DELIVERED TO THE PRECINCT

|   |             |             |             |             |
|---|-------------|-------------|-------------|-------------|
| Ballots delivered as certified by the clerk<br>(This number is found on the Election Precinct Certification Form located in your Head Judge Book) | 5. <u>0</u> | 5. <u>0</u> | 5. <u>0</u> | 5. <u>0</u> |
|---|-------------|-------------|-------------|-------------|

|  |             |             |             |             |
|--|-------------|-------------|-------------|-------------|
| Ballot count adjustments from incident log (+/-)<br>(Check your incident log for any differences found when judges counted the number of ballots in each opened package and any other notations that would affect the number of ballots for your precinct) | 6. <u>0</u> | 6. <u>0</u> | 6. <u>0</u> | 6. <u>0</u> |
|--|-------------|-------------|-------------|-------------|

|   |             |             |             |             |
|---|-------------|-------------|-------------|-------------|
| Number of unofficial ballots made<br>(This number will most likely be "0" unless you ran out of official ballots) | 7. <u>0</u> | 7. <u>0</u> | 7. <u>0</u> | 7. <u>0</u> |
|---|-------------|-------------|-------------|-------------|

|   |               |              |              |               |
|---|---------------|--------------|--------------|---------------|
| Number of absentee ballots delivered                        | 8. <u>125</u> | 8. <u>88</u> | 8. <u>46</u> | 8. <u>259</u> |
| Total number of ballots delivered to precinct (5+6+7+8 = A) | <u>125</u>    | <u>88</u>    | <u>46</u>    | <u>259</u>    |

BALLOTS NOT IN THE BALLOT BOX

|   |              |              |              |              |
|---|--------------|--------------|--------------|--------------|
| Number of spoiled ballots<br>(Number of ballots in the spoiled ballot envelope) | *9. <u>4</u> | *9. <u>0</u> | *9. <u>0</u> | *9. <u>4</u> |
|---|--------------|--------------|--------------|--------------|

|   |               |               |               |               |
|---|---------------|---------------|---------------|---------------|
| Number of originals for which duplicates made<br>(Number of ballots in the duplicate ballot envelope) | *10. <u>8</u> | *10. <u>0</u> | *10. <u>0</u> | *10. <u>8</u> |
|---|---------------|---------------|---------------|---------------|

|                              |               |               |               |               |
|------------------------------|---------------|---------------|---------------|---------------|
| Number of rejected absentees | *11. <u>5</u> | *11. <u>0</u> | *11. <u>0</u> | *11. <u>5</u> |
|------------------------------|---------------|---------------|---------------|---------------|

|   |              |              |              |              |
|---|--------------|--------------|--------------|--------------|
| Number of unused ballots<br>(Count the number of unused ballots at the end of the day, including those ballots in unopened packages plus ballots not used from opened packages) | 12. <u>0</u> | 12. <u>0</u> | 12. <u>0</u> | 12. <u>0</u> |
| Total number of ballots not in the ballot box (9+10+11+12 = B)  | <u>17</u>    | <u>0</u>     | <u>0</u>     | <u>17</u>    |

BALLOTS CAST IN THE BALLOT BOX

|  |               |               |               |               |
|--|---------------|---------------|---------------|---------------|
| Number of signatures on electronic roster (preregistered + EDR)<br>(This number is found on the Summary Report you printed from the poll pad and should equal the Public Count and Total Paper Sheets on the DS200 Results Tape) | *13. <u>0</u> | *13. <u>0</u> | *13. <u>0</u> | *13. <u>0</u> |
|--|---------------|---------------|---------------|---------------|

|   |                 |                |                |                 |
|---|-----------------|----------------|----------------|-----------------|
| Number of accepted regular, military and overseas absentee & mail ballots | *14. <u>103</u> | *14. <u>88</u> | *14. <u>46</u> | *14. <u>237</u> |
|---|-----------------|----------------|----------------|-----------------|

|  |               |               |               |               |
|--|---------------|---------------|---------------|---------------|
| Number of accepted federal only absentee ballots | *15. <u>5</u> | *15. <u>0</u> | *15. <u>0</u> | *15. <u>5</u> |
|--|---------------|---------------|---------------|---------------|

|  |               |               |               |               |
|--|---------------|---------------|---------------|---------------|
| Number of accepted presidential only absentee ballots                          | *16. <u>0</u> | *16. <u>0</u> | *16. <u>0</u> | *16. <u>0</u> |
| Total number of ballots in the ballot box (= persons voting) (13+14+15+16 = C) | <u>108</u>    | <u>88</u>     | <u>46</u>     | <u>242</u>    |

BALLOTS RETURNED FROM THE PRECINCT

|  |            |           |           |            |
|--|------------|-----------|-----------|------------|
| Ballots returned from the precinct (B + C = D) | <u>125</u> | <u>88</u> | <u>46</u> | <u>259</u> |
|--|------------|-----------|-----------|------------|

|  |          |          |          |          |
|--|----------|----------|----------|----------|
| Difference for auditor/clerk notation on delivery record (A - D = E)<br>(This number should be "0"; if not, re-check your figures. If still not "0" and you are unable to reconcile, contact the Property Tax & Elections Office.) | <u>0</u> | <u>0</u> | <u>0</u> | <u>0</u> |
|--|----------|----------|----------|----------|

\*Entered into ERS



Precinct Summary Statement  
State General Election: November 5, 2024

Municipality Northfield

Ward 1 Precinct 1

County Rice AB/MB RC DB NF DB TOTAL

Number of election judges who worked in this precinct (Total number of judges for the precinct for the entire day who signed the oath) 1. 10 1. 10 1. 10 1. 10

Number of voting booths in this precinct (Total number of standing/sitting booths or other types of voting spaces available in the polling place) 2. 6 2. 6 2. 6 2. 6

REGISTRATION STATISTICS

Number of persons registered at 7 a.m. (This number is found on the Election Precinct Certification Form located in your Head Judge Book) \*3. 1928 \*3. 1928 \*3. 1928 \*3. 1928

Number of new registrants on election day (This number is found on the Summary Report you printed from the poll pad) \*4. 77 \*4. 0 \*4. 42 \*4. 119

BALLOTS DELIVERED TO THE PRECINCT

Ballots delivered as certified by the clerk (This number is found on the Election Precinct Certification Form located in your Head Judge Book) 5. 0 5. 0 5. 0 5. 0

Ballot count adjustments from incident log (+/-) (Check your incident log for any differences found when judges counted the number of ballots in each opened package and any other notations that would affect the number of ballots for your precinct) 6. 0 6. 0 6. 0 6. 0

Number of unofficial ballots made (This number will most likely be "0" unless you ran out of official ballots) 7. 0 7. 0 7. 0 7. 0

Number of absentee ballots delivered 8. 540 8. 1 8. 265 8. 806

Total number of ballots delivered to precinct (5+6+7+8 = A) A 540 A 1 A 265 A 806

BALLOTS NOT IN THE BALLOT BOX

Number of spoiled ballots (Number of ballots in the spoiled ballot envelope) \*9. 1 \*9. 0 \*9. 6 \*9. 7

Number of originals for which duplicates made (Number of ballots in the duplicate ballot envelope) \*10. 63 \*10. 0 \*10. 0 \*10. 63

Number of rejected absentees \*11. 812 \*11. 0 \*11. 0 \*11. 12

Number of unused ballots (Count the number of unused ballots at the end of the day, including those ballots in unopened packages plus ballots not used from opened packages) 12. 0 12. 0 12. 0 12. 0

Total number of ballots not in the ballot box (9+10+11+12 = B) B 76 B 0 B 6 B 82

BALLOTS CAST IN THE BALLOT BOX

Number of signatures on electronic roster (preregistered + EDR) (This number is found on the Summary Report you printed from the poll pad and should equal the Public Count and Total Paper Sheets on the DS200 Results Tape) \*13. 0 \*13. 0 \*13. 0 \*13. 0

Number of accepted regular, military and overseas absentee & mail ballots \*14. 447 \*14. 1 \*14. 259 \*14. 707

Number of accepted federal only absentee ballots \*15. 17 \*15. 0 \*15. 0 \*15. 17

Number of accepted presidential only absentee ballots \*16. 0 \*16. 0 \*16. 0 \*16. 0

Total number of ballots in the ballot box (= persons voting) (13+14+15+16 = C) C 464 C 1 C 259 C 724

BALLOTS RETURNED FROM THE PRECINCT

Ballots returned from the precinct (B + C = D) D 540 D 1 D 265 D 806

Difference for auditor/clerk notation on delivery record (A - D = E) (This number should be "0"; if not, re-check your figures. If still not "0" and you are unable to reconcile, contact the Property Tax & Elections Office.) E 0 E 0 E 0 E 0

\*Entered into ERS

Precinct Summary Statement  
State General Election: November 5, 2024

Municipality Northfield  
Ward 1 Precinct 2  
County Rice

|  | AB/MB | RC DB | NF DB | TOTAL |
|--|-------|-------|-------|-------|
|--|-------|-------|-------|-------|

|  |              |              |              |              |
|--|--------------|--------------|--------------|--------------|
| Number of election judges who worked in this precinct<br>(Total number of judges for the precinct for the entire day who signed the oath)            | 1. <u>10</u> | 1. <u>10</u> | 1. <u>10</u> | 1. <u>10</u> |
| Number of voting booths in this precinct<br>(Total number of standing/sitting booths or other types of voting spaces available in the polling place) | 2. <u>6</u>  | 2. <u>6</u>  | 2. <u>6</u>  | 2. <u>6</u>  |

REGISTRATION STATISTICS

|  |                 |                 |                 |                 |
|--|-----------------|-----------------|-----------------|-----------------|
| Number of persons registered at 7 a.m.<br>(This number is found on the Election Precinct Certification Form located in your Head Judge Book) | *3. <u>2010</u> | *3. <u>2010</u> | *3. <u>2010</u> | *3. <u>2010</u> |
| Number of new registrants on election day<br>(This number is found on the Summary Report you printed from the poll pad)                      | *4. <u>10</u>   | *4. <u>0</u>    | *4. <u>22</u>   | *4. <u>32</u>   |

BALLETS DELIVERED TO THE PRECINCT

|  |               |              |               |                |
|--|---------------|--------------|---------------|----------------|
| Ballots delivered as certified by the clerk<br>(This number is found on the Election Precinct Certification Form located in your Head Judge Book)  | 5. <u>0</u>   | 5. <u>0</u>  | 5. <u>0</u>   | 5. <u>0</u>    |
| Ballot count adjustments from incident log (+/-)<br>(Check your incident log for any differences found when judges counted the number of ballots in each opened package and any other notations that would affect the number of ballots for your precinct) | 6. <u>0</u>   | 6. <u>0</u>  | 6. <u>0</u>   | 6. <u>0</u>    |
| Number of unofficial ballots made<br>(This number will most likely be "0" unless you ran out of official ballots)  | 7. <u>0</u>   | 7. <u>0</u>  | 7. <u>0</u>   | 7. <u>0</u>    |
| Number of absentee ballots delivered   | 8. <u>587</u> | 8. <u>4</u>  | 8. <u>557</u> | 8. <u>1148</u> |
| Total number of ballots delivered to precinct (5+6+7+8 = A)  |               | A <u>587</u> | A <u>557</u>  | A <u>1148</u>  |

BALLETS NOT IN THE BALLOT BOX

|   |                |               |               |                |
|---|----------------|---------------|---------------|----------------|
| Number of spoiled ballots<br>(Number of ballots in the spoiled ballot envelope)   | *9. <u>11</u>  | *9. <u>0</u>  | *9. <u>4</u>  | *9. <u>15</u>  |
| Number of originals for which duplicates made<br>(Number of ballots in the duplicate ballot envelope)   | *10. <u>34</u> | *10. <u>0</u> | *10. <u>0</u> | *10. <u>34</u> |
| Number of rejected absentees  | *11. <u>8</u>  | *11. <u>0</u> | *11. <u>0</u> | *11. <u>8</u>  |
| Number of unused ballots<br>(Count the number of unused ballots at the end of the day, including those ballots in unopened packages plus ballots not used from opened packages) | 12. <u>0</u>   | 12. <u>0</u>  | 12. <u>0</u>  | 12. <u>0</u>   |
| Total number of ballots not in the ballot box (9+10+11+12 = B)  |                | B <u>53</u>   | B <u>4</u>    | B <u>57</u>    |

BALLETS CAST IN THE BALLOT BOX

|  |                 |               |                 |                  |
|--|-----------------|---------------|-----------------|------------------|
| Number of signatures on electronic roster (preregistered + EDR)<br>(This number is found on the Summary Report you printed from the poll pad and should equal the Public Count and Total Paper Sheets on the DS200 Results Tape) | *13. <u>0</u>   | *13. <u>0</u> | *13. <u>0</u>   | *13. <u>0</u>    |
| Number of accepted regular, military and overseas absentee & mail ballots *  | *14. <u>526</u> | *14. <u>4</u> | *14. <u>553</u> | *14. <u>1083</u> |
| Number of accepted federal only absentee ballots   | *15. <u>8</u>   | *15. <u>0</u> | *15. <u>0</u>   | *15. <u>8</u>    |
| Number of accepted presidential only absentee ballots  | *16. <u>0</u>   | *16. <u>0</u> | *16. <u>0</u>   | *16. <u>0</u>    |
| Total number of ballots in the ballot box (= persons voting) (13+14+15+16 = C)   |                 | C <u>534</u>  | C <u>4</u>      | C <u>1091</u>    |

BALLETS RETURNED FROM THE PRECINCT

|  |              |            |              |               |
|--|--------------|------------|--------------|---------------|
| Ballots returned from the precinct (B + C = D)   | D <u>587</u> | D <u>4</u> | D <u>557</u> | D <u>1148</u> |
| Difference for auditor/clerk notation on delivery record (A - D = E)<br>(This number should be "0"; if not, re-check your figures. If still not "0" and you are unable to reconcile, contact the Property Tax & Elections Office.) | E <u>0</u>   | E <u>0</u> | E <u>0</u>   | E <u>0</u>    |

\*Entered into ERS

Precinct Summary Statement  
State General Election: November 5, 2024

Municipality Northfield  
Ward 2 Precinct 1  
County Rice

|  | AB/MB           | RC DB           | NF DB           | TOTAL           |
|--|-----------------|-----------------|-----------------|-----------------|
| Number of election judges who worked in this precinct<br>(Total number of judges for the precinct for the entire day who signed the oath)  | 1. <u>10</u>    | 1. <u>10</u>    | 1. <u>10</u>    | 1. <u>10</u>    |
| Number of voting booths in this precinct<br>(Total number of standing/sitting booths or other types of voting spaces available in the polling place)   | 2. <u>6</u>     | 2. <u>6</u>     | 2. <u>6</u>     | 2. <u>6</u>     |
| <b>REGISTRATION STATISTICS</b>   |                 |                 |                 |                 |
| Number of persons registered at 7 a.m.<br>(This number is found on the Election Precinct Certification Form located in your Head Judge Book)   | *3. <u>1831</u> | *3. <u>1831</u> | *3. <u>1831</u> | *3. <u>1831</u> |
| Number of new registrants on election day<br>(This number is found on the Summary Report you printed from the poll pad)  | *4. <u>11</u>   | *4. <u>0</u>    | *4. <u>21</u>   | *4. <u>28</u>   |
| <b>BALLOTS DELIVERED TO THE PRECINCT</b>   |                 |                 |                 |                 |
| Ballots delivered as certified by the clerk<br>(This number is found on the Election Precinct Certification Form located in your Head Judge Book)  | 5. <u>0</u>     | 5. <u>0</u>     | 5. <u>0</u>     | 5. <u>0</u>     |
| Ballot count adjustments from incident log (+/-)<br>(Check your incident log for any differences found when judges counted the number of ballots in each opened package and any other notations that would affect the number of ballots for your precinct) | 6. <u>0</u>     | 6. <u>0</u>     | 6. <u>0</u>     | 6. <u>0</u>     |
| Number of unofficial ballots made<br>(This number will most likely be "0" unless you ran out of official ballots)  | 7. <u>0</u>     | 7. <u>0</u>     | 7. <u>0</u>     | 7. <u>0</u>     |
| Number of absentee ballots delivered   | 8. <u>386</u>   | 8. <u>3</u>     | 8. <u>360</u>   | 8. <u>749</u>   |
| Total number of ballots delivered to precinct (5+6+7+8 = A)  | A <u>386</u>    | A <u>3</u>      | A <u>360</u>    | A <u>749</u>    |
| <b>BALLOTS NOT IN THE BALLOT BOX</b>   |                 |                 |                 |                 |
| Number of spoiled ballots<br>(Number of ballots in the spoiled ballot envelope)  | *9. <u>2</u>    | *9. <u>0</u>    | *9. <u>5</u>    | *9. <u>7</u>    |
| Number of originals for which duplicates made<br>(Number of ballots in the duplicate ballot envelope)  | *10. <u>21</u>  | *10. <u>0</u>   | *10. <u>0</u>   | *10. <u>21</u>  |
| Number of rejected absentees   | *11. <u>9</u>   | *11. <u>0</u>   | *11. <u>0</u>   | *11. <u>9</u>   |
| Number of unused ballots<br>(Count the number of unused ballots at the end of the day, including those ballots in unopened packages plus ballots not used from opened packages)  | 12. <u>0</u>    | 12. <u>0</u>    | 12. <u>0</u>    | 12. <u>0</u>    |
| Total number of ballots not in the ballot box (9+10+11+12 = B)   | B <u>32</u>     | B <u>0</u>      | B <u>5</u>      | B <u>37</u>     |
| <b>BALLOTS CAST IN THE BALLOT BOX</b>  |                 |                 |                 |                 |
| Number of signatures on electronic roster (preregistered + EDR)<br>(This number is found on the Summary Report you printed from the poll pad and should equal the Public Count and Total Paper Sheets on the DS200 Results Tape)                           | *13. <u>0</u>   | *13. <u>0</u>   | *13. <u>0</u>   | *13. <u>0</u>   |
| Number of accepted regular, military and overseas absentee & mail ballots  | *14. <u>350</u> | *14. <u>3</u>   | *14. <u>355</u> | *14. <u>708</u> |
| Number of accepted federal only absentee ballots   | *15. <u>4</u>   | *15. <u>0</u>   | *15. <u>0</u>   | *15. <u>4</u>   |
| Number of accepted presidential only absentee ballots  | *16. <u>0</u>   | *16. <u>0</u>   | *16. <u>0</u>   | *16. <u>0</u>   |
| Total number of ballots in the ballot box (= persons voting) (13+14+15+16 = C)   | C <u>354</u>    | C <u>3</u>      | C <u>355</u>    | C <u>712</u>    |
| <b>BALLOTS RETURNED FROM THE PRECINCT</b>  |                 |                 |                 |                 |
| Ballots returned from the precinct (B + C = D)   | D <u>386</u>    | D <u>3</u>      | D <u>360</u>    | D <u>749</u>    |
| Difference for auditor/clerk notation on delivery record (A - D = E)<br>(This number should be "0"; if not, re-check your figures. If still not "0" and you are unable to reconcile, contact the Property Tax & Elections Office.)                         | E <u>0</u>      | E <u>0</u>      | E <u>0</u>      | E <u>0</u>      |

\*Entered into ERS

Precinct Summary Statement  
State General Election: November 5, 2024

Municipality Northfield  
Ward 2 Precinct 2  
County Rice

|  | AB/MB           | RC DB           | NF DB           | TOTAL           |
|--|-----------------|-----------------|-----------------|-----------------|
| Number of election judges who worked in this precinct<br>(Total number of judges for the precinct for the entire day who signed the oath)  | 1. <u>10</u>    | 1. <u>10</u>    | 1. <u>10</u>    | 1. <u>10</u>    |
| Number of voting booths in this precinct<br>(Total number of standing/sitting booths or other types of voting spaces available in the polling place)   | 2. <u>6</u>     | 2. <u>6</u>     | 2. <u>6</u>     | 2. <u>6</u>     |
| <b>REGISTRATION STATISTICS</b>   |                 |                 |                 |                 |
| Number of persons registered at 7 a.m.<br>(This number is found on the Election Precinct Certification Form located in your Head Judge Book)   | *3. <u>1860</u> | *3. <u>1860</u> | *3. <u>1860</u> | *3. <u>1860</u> |
| Number of new registrants on election day<br>(This number is found on the Summary Report you printed from the poll pad)  | *4. <u>15</u>   | *4. <u>0</u>    | *4. <u>15</u>   | *4. <u>30</u>   |
| <b>BALLOTS DELIVERED TO THE PRECINCT</b>   |                 |                 |                 |                 |
| Ballots delivered as certified by the clerk<br>(This number is found on the Election Precinct Certification Form located in your Head Judge Book)  | 5. <u>0</u>     | 5. <u>0</u>     | 5. <u>0</u>     | 5. <u>0</u>     |
| Ballot count adjustments from incident log (+/-)<br>(Check your incident log for any differences found when judges counted the number of ballots in each opened package and any other notations that would affect the number of ballots for your precinct) | 6. <u>0</u>     | 6. <u>0</u>     | 6. <u>0</u>     | 6. <u>0</u>     |
| Number of unofficial ballots made<br>(This number will most likely be "0" unless you ran out of official ballots)  | 7. <u>0</u>     | 7. <u>0</u>     | 7. <u>0</u>     | 7. <u>0</u>     |
| Number of absentee ballots delivered   | 8. <u>431</u>   | 8. <u>10</u>    | 8. <u>355</u>   | 8. <u>796</u>   |
| Total number of ballots delivered to precinct (5+6+7+8 = A)  | A <u>431</u>    | A <u>10</u>     | A <u>355</u>    | A <u>796</u>    |
| <b>BALLOTS NOT IN THE BALLOT BOX</b>   |                 |                 |                 |                 |
| Number of spoiled ballots<br>(Number of ballots in the spoiled ballot envelope)  | *9. <u>4</u>    | *9. <u>0</u>    | *9. <u>5</u>    | *9. <u>9</u>    |
| Number of originals for which duplicates made<br>(Number of ballots in the duplicate ballot envelope)  | *10. <u>14</u>  | *10. <u>0</u>   | *10. <u>0</u>   | *10. <u>14</u>  |
| Number of rejected absentees   | *11. <u>9</u>   | *11. <u>0</u>   | *11. <u>0</u>   | *11. <u>9</u>   |
| Number of unused ballots<br>(Count the number of unused ballots at the end of the day, including those ballots in unopened packages plus ballots not used from opened packages)  | 12. <u>0</u>    | 12. <u>0</u>    | 12. <u>0</u>    | 12. <u>0</u>    |
| Total number of ballots not in the ballot box (9+10+11+12 = B)   | B <u>27</u>     | B <u>0</u>      | B <u>5</u>      | B <u>32</u>     |
| <b>BALLOTS CAST IN THE BALLOT BOX</b>  |                 |                 |                 |                 |
| Number of signatures on electronic roster (preregistered + EDR)<br>(This number is found on the Summary Report you printed from the poll pad and should equal the Public Count and Total Paper Sheets on the DS200 Results Tape)                           | *13. <u>0</u>   | *13. <u>0</u>   | *13. <u>0</u>   | *13. <u>0</u>   |
| Number of accepted regular, military and overseas absentee & mail ballots  | *14. <u>404</u> | *14. <u>10</u>  | *14. <u>350</u> | *14. <u>764</u> |
| Number of accepted federal only absentee ballots   | *15. <u>0</u>   | *15. <u>0</u>   | *15. <u>0</u>   | *15. <u>0</u>   |
| Number of accepted presidential only absentee ballots  | *16. <u>0</u>   | *16. <u>0</u>   | *16. <u>0</u>   | *16. <u>0</u>   |
| Total number of ballots in the ballot box (= persons voting) (13+14+15+16 = C)   | C <u>404</u>    | C <u>10</u>     | C <u>350</u>    | C <u>764</u>    |
| <b>BALLOTS RETURNED FROM THE PRECINCT</b>  |                 |                 |                 |                 |
| Ballots returned from the precinct (B + C = D)   | D <u>431</u>    | D <u>10</u>     | D <u>355</u>    | D <u>796</u>    |
| Difference for auditor/clerk notation on delivery record (A - D = E)<br>(This number should be "0"; if not, re-check your figures. If still not "0" and you are unable to reconcile, contact the Property Tax & Elections Office.)                         | E <u>0</u>      | E <u>0</u>      | E <u>0</u>      | E <u>0</u>      |

\*Entered into ERS

Precinct Summary Statement  
State General Election: November 5, 2024

Municipality Northfield  
Ward 3 Precinct 1  
County Rice

|  | AB/MB           | RC DB           | NF DB           | TOTAL           |
|--|-----------------|-----------------|-----------------|-----------------|
| Number of election judges who worked in this precinct<br>(Total number of judges for the precinct for the entire day who signed the oath)  | 1. <u>10</u>    | 1. <u>10</u>    | 1. <u>10</u>    | 1. <u>10</u>    |
| Number of voting booths in this precinct<br>(Total number of standing/sitting booths or other types of voting spaces available in the polling place)   | 2. <u>6</u>     | 2. <u>6</u>     | 2. <u>6</u>     | 2. <u>6</u>     |
| <b>REGISTRATION STATISTICS</b>   |                 |                 |                 |                 |
| Number of persons registered at 7 a.m.<br>(This number is found on the Election Precinct Certification Form located in your Head Judge Book)   | *3. <u>1964</u> | *3. <u>1964</u> | *3. <u>1964</u> | *3. <u>1964</u> |
| Number of new registrants on election day<br>(This number is found on the Summary Report you printed from the poll pad)  | *4. <u>12</u>   | *4. <u>1</u>    | *4. <u>32</u>   | *4. <u>45</u>   |
| <b>BALLOTS DELIVERED TO THE PRECINCT</b>   |                 |                 |                 |                 |
| Ballots delivered as certified by the clerk<br>(This number is found on the Election Precinct Certification Form located in your Head Judge Book)  | 5. <u>0</u>     | 5. <u>0</u>     | 5. <u>0</u>     | 5. <u>0</u>     |
| Ballot count adjustments from incident log (+/-)<br>(Check your incident log for any differences found when judges counted the number of ballots in each opened package and any other notations that would affect the number of ballots for your precinct) | 6. <u>0</u>     | 6. <u>0</u>     | 6. <u>0</u>     | 6. <u>0</u>     |
| Number of unofficial ballots made<br>(This number will most likely be "0" unless you ran out of official ballots)  | 7. <u>0</u>     | 7. <u>0</u>     | 7. <u>0</u>     | 7. <u>0</u>     |
| Number of absentee ballots delivered   | 8. <u>520</u>   | 8. <u>8</u>     | 8. <u>333</u>   | 8. <u>861</u>   |
| Total number of ballots delivered to precinct (5+6+7+8 = A)  | A <u>520</u>    | A <u>8</u>      | A <u>333</u>    | A <u>861</u>    |
| <b>BALLOTS NOT IN THE BALLOT BOX</b>   |                 |                 |                 |                 |
| Number of spoiled ballots<br>(Number of ballots in the spoiled ballot envelope)  | *9. <u>5</u>    | *9. <u>0</u>    | *9. <u>6</u>    | *9. <u>11</u>   |
| Number of originals for which duplicates made<br>(Number of ballots in the duplicate ballot envelope)  | *10. <u>26</u>  | *10. <u>0</u>   | *10. <u>0</u>   | *10. <u>26</u>  |
| Number of rejected absentees   | *11. <u>21</u>  | *11. <u>0</u>   | *11. <u>0</u>   | *11. <u>21</u>  |
| Number of unused ballots<br>(Count the number of unused ballots at the end of the day, including those ballots in unopened packages plus ballots not used from opened packages)  | 12. <u>0</u>    | 12. <u>0</u>    | 12. <u>0</u>    | 12. <u>0</u>    |
| Total number of ballots not in the ballot box (9+10+11+12 = B)   | B <u>52</u>     | B <u>0</u>      | B <u>6</u>      | B <u>58</u>     |
| <b>BALLOTS CAST IN THE BALLOT BOX</b>  |                 |                 |                 |                 |
| Number of signatures on electronic roster (preregistered + EDR)<br>(This number is found on the Summary Report you printed from the poll pad and should equal the Public Count and Total Paper Sheets on the DS200 Results Tape)                           | *13. <u>0</u>   | *13. <u>0</u>   | *13. <u>0</u>   | *13. <u>0</u>   |
| Number of accepted regular, military and overseas absentee & mail ballots *  | *14. <u>462</u> | *14. <u>8</u>   | *14. <u>327</u> | *14. <u>797</u> |
| Number of accepted federal only absentee ballots   | *15. <u>6</u>   | *15. <u>0</u>   | *15. <u>0</u>   | *15. <u>6</u>   |
| Number of accepted presidential only absentee ballots  | *16. <u>0</u>   | *16. <u>0</u>   | *16. <u>0</u>   | *16. <u>0</u>   |
| Total number of ballots in the ballot box (= persons voting) (13+14+15+16 = C)   | C <u>468</u>    | C <u>8</u>      | C <u>327</u>    | C <u>803</u>    |
| <b>BALLOTS RETURNED FROM THE PRECINCT</b>  |                 |                 |                 |                 |
| Ballots returned from the precinct (B + C = D)   | D <u>520</u>    | D <u>8</u>      | D <u>333</u>    | D <u>861</u>    |
| Difference for auditor/clerk notation on delivery record (A - D = E)<br>(This number should be "0"; if not, re-check your figures. If still not "0" and you are unable to reconcile, contact the Property Tax & Elections Office.)                         | E <u>0</u>      | E <u>0</u>      | E <u>0</u>      | E <u>0</u>      |

\*Entered into ERS

Precinct Summary Statement  
State General Election: November 5, 2024

Municipality Northfield  
Ward 4 Precinct 1  
County Rice

|  | AB/MB           | RC DB           | NF DB           | TOTAL           |
|--|-----------------|-----------------|-----------------|-----------------|
| Number of election judges who worked in this precinct<br>(Total number of judges for the precinct for the entire day who signed the oath)  | 1. <u>10</u>    | 1. <u>10</u>    | 1. <u>10</u>    | 1. <u>10</u>    |
| Number of voting booths in this precinct<br>(Total number of standing/sitting booths or other types of voting spaces available in the polling place)   | 2. <u>6</u>     | 2. <u>6</u>     | 2. <u>6</u>     | 2. <u>6</u>     |
| <b>REGISTRATION STATISTICS</b>   |                 |                 |                 |                 |
| Number of persons registered at 7 a.m.<br>(This number is found on the Election Precinct Certification Form located in your Head Judge Book)   | *3. <u>1657</u> | *3. <u>1657</u> | *3. <u>1657</u> | *3. <u>1657</u> |
| Number of new registrants on election day<br>(This number is found on the Summary Report you printed from the poll pad)  | *4. <u>19</u>   | *4. <u>3</u>    | *4. <u>20</u>   | *4. <u>42</u>   |
| <b>BALLOTS DELIVERED TO THE PRECINCT</b>   |                 |                 |                 |                 |
| Ballots delivered as certified by the clerk<br>(This number is found on the Election Precinct Certification Form located in your Head Judge Book)  | 5. <u>0</u>     | 5. <u>0</u>     | 5. <u>0</u>     | 5. <u>0</u>     |
| Ballot count adjustments from incident log (+/-)<br>(Check your incident log for any differences found when judges counted the number of ballots in each opened package and any other notations that would affect the number of ballots for your precinct) | 6. <u>0</u>     | 6. <u>0</u>     | 6. <u>0</u>     | 6. <u>0</u>     |
| Number of unofficial ballots made<br>(This number will most likely be "0" unless you ran out of official ballots)  | 7. <u>0</u>     | 7. <u>0</u>     | 7. <u>0</u>     | 7. <u>0</u>     |
| Number of absentee ballots delivered   | 8. <u>433</u>   | 8. <u>6</u>     | 8. <u>327</u>   | 8. <u>766</u>   |
| Total number of ballots delivered to precinct (5+6+7+8 = A)  | A <u>433</u>    | A <u>6</u>      | A <u>327</u>    | A <u>766</u>    |
| <b>BALLOTS NOT IN THE BALLOT BOX</b>   |                 |                 |                 |                 |
| Number of spoiled ballots<br>(Number of ballots in the spoiled ballot envelope)  | *9. <u>1</u>    | *9. <u>0</u>    | *9. <u>7</u>    | *9. <u>8</u>    |
| Number of originals for which duplicates made<br>(Number of ballots in the duplicate ballot envelope)  | *10. <u>36</u>  | *10. <u>0</u>   | *10. <u>0</u>   | *10. <u>36</u>  |
| Number of rejected absentees   | *11. <u>13</u>  | *11. <u>0</u>   | *11. <u>0</u>   | *11. <u>13</u>  |
| Number of unused ballots<br>(Count the number of unused ballots at the end of the day, including those ballots in unopened packages plus ballots not used from opened packages)  | 12. <u>0</u>    | 12. <u>0</u>    | 12. <u>0</u>    | 12. <u>0</u>    |
| Total number of ballots not in the ballot box (9+10+11+12 = B)   | B <u>50</u>     | B <u>0</u>      | B <u>7</u>      | B <u>57</u>     |
| <b>BALLOTS CAST IN THE BALLOT BOX</b>  |                 |                 |                 |                 |
| Number of signatures on electronic roster (preregistered + EDR)<br>(This number is found on the Summary Report you printed from the poll pad and should equal the Public Count and Total Paper Sheets on the DS200 Results Tape)                           | *13. <u>0</u>   | *13. <u>0</u>   | *13. <u>0</u>   | *13. <u>0</u>   |
| Number of accepted regular, military and overseas absentee & mail ballots  | *14. <u>365</u> | *14. <u>6</u>   | *14. <u>320</u> | *14. <u>691</u> |
| Number of accepted federal only absentee ballots   | *15. <u>18</u>  | *15. <u>0</u>   | *15. <u>0</u>   | *15. <u>18</u>  |
| Number of accepted presidential only absentee ballots  | *16. <u>0</u>   | *16. <u>0</u>   | *16. <u>0</u>   | *16. <u>0</u>   |
| Total number of ballots in the ballot box (= persons voting) (13+14+15+16 = C)   | C <u>383</u>    | C <u>6</u>      | C <u>320</u>    | C <u>709</u>    |
| <b>BALLOTS RETURNED FROM THE PRECINCT</b>  |                 |                 |                 |                 |
| Ballots returned from the precinct (B + C = D)   | D <u>433</u>    | D <u>6</u>      | D <u>327</u>    | D <u>766</u>    |
| Difference for auditor/clerk notation on delivery record (A - D = E)<br>(This number should be "0"; if not, re-check your figures. If still not "0" and you are unable to reconcile, contact the Property Tax & Elections Office.)                         | E <u>0</u>      | E <u>0</u>      | E <u>0</u>      | E <u>0</u>      |

\*Entered into ERS

Precinct Summary Statement  
State General Election: November 5, 2024

Municipality Northfield  
Ward 4 Precinct 2  
County Rice

|  | AB/MB           | RC DB           | NF DB           | TOTAL           |
|--|-----------------|-----------------|-----------------|-----------------|
| Number of election judges who worked in this precinct<br>(Total number of judges for the precinct for the entire day who signed the oath)  | 1. <u>10</u>    | 1. <u>10</u>    | 1. <u>10</u>    | 1. <u>10</u>    |
| Number of voting booths in this precinct<br>(Total number of standing/sitting booths or other types of voting spaces available in the polling place)   | 2. <u>6</u>     | 2. <u>6</u>     | 2. <u>6</u>     | 2. <u>6</u>     |
| <b>REGISTRATION STATISTICS</b>   |                 |                 |                 |                 |
| Number of persons registered at 7 a.m.<br>(This number is found on the Election Precinct Certification Form located in your Head Judge Book)   | *3. <u>1287</u> | *3. <u>1287</u> | *3. <u>1287</u> | *3. <u>1287</u> |
| Number of new registrants on election day<br>(This number is found on the Summary Report you printed from the poll pad)  | *4. <u>4</u>    | *4. <u>0</u>    | *4. <u>3</u>    | *4. <u>7</u>    |
| <b>BALLOTS DELIVERED TO THE PRECINCT</b>   |                 |                 |                 |                 |
| Ballots delivered as certified by the clerk<br>(This number is found on the Election Precinct Certification Form located in your Head Judge Book)  | 5. <u>0</u>     | 5. <u>0</u>     | 5. <u>0</u>     | 5. <u>0</u>     |
| Ballot count adjustments from incident log (+/-)<br>(Check your incident log for any differences found when judges counted the number of ballots in each opened package and any other notations that would affect the number of ballots for your precinct) | 6. <u>0</u>     | 6. <u>0</u>     | 6. <u>0</u>     | 6. <u>0</u>     |
| Number of unofficial ballots made<br>(This number will most likely be "0" unless you ran out of official ballots)  | 7. <u>0</u>     | 7. <u>0</u>     | 7. <u>0</u>     | 7. <u>0</u>     |
| Number of absentee ballots delivered   | 8. <u>59</u>    | 8. <u>1</u>     | 8. <u>17</u>    | 8. <u>77</u>    |
| Total number of ballots delivered to precinct (5+6+7+8 = A)  | A <u>59</u>     | A <u>1</u>      | A <u>17</u>     | A <u>77</u>     |
| <b>BALLOTS NOT IN THE BALLOT BOX</b>   |                 |                 |                 |                 |
| Number of spoiled ballots<br>(Number of ballots in the spoiled ballot envelope)  | *9. <u>1</u>    | *9. <u>0</u>    | *9. <u>1</u>    | *9. <u>2</u>    |
| Number of originals for which duplicates made<br>(Number of ballots in the duplicate ballot envelope)  | *10. <u>14</u>  | *10. <u>0</u>   | *10. <u>0</u>   | *10. <u>14</u>  |
| Number of rejected absentees   | *11. <u>0</u>   | *11. <u>0</u>   | *11. <u>0</u>   | *11. <u>1</u>   |
| Number of unused ballots<br>(Count the number of unused ballots at the end of the day, including those ballots in unopened packages plus ballots not used from opened packages)  | 12. <u>0</u>    | 12. <u>0</u>    | 12. <u>0</u>    | 12. <u>0</u>    |
| Total number of ballots not in the ballot box (9+10+11+12 = B)   | B <u>16</u>     | B <u>0</u>      | B <u>1</u>      | B <u>17</u>     |
| <b>BALLOTS CAST IN THE BALLOT BOX</b>  |                 |                 |                 |                 |
| Number of signatures on electronic roster (preregistered + EDR)<br>(This number is found on the Summary Report you printed from the poll pad and should equal the Public Count and Total Paper Sheets on the DS200 Results Tape)                           | *13. <u>0</u>   | *13. <u>0</u>   | *13. <u>0</u>   | *13. <u>0</u>   |
| Number of accepted regular, military and overseas absentee & mail ballots  | *14. <u>38</u>  | *14. <u>1</u>   | *14. <u>16</u>  | *14. <u>55</u>  |
| Number of accepted federal only absentee ballots   | *15. <u>5</u>   | *15. <u>0</u>   | *15. <u>0</u>   | *15. <u>5</u>   |
| Number of accepted presidential only absentee ballots  | *16. <u>0</u>   | *16. <u>0</u>   | *16. <u>0</u>   | *16. <u>0</u>   |
| Total number of ballots in the ballot box (= persons voting) (13+14+15+16 = C)   | C <u>43</u>     | C <u>1</u>      | C <u>16</u>     | C <u>60</u>     |
| <b>BALLOTS RETURNED FROM THE PRECINCT</b>  |                 |                 |                 |                 |
| Ballots returned from the precinct (B + C = D)   | D <u>59</u>     | D <u>1</u>      | D <u>17</u>     | D <u>77</u>     |
| Difference for auditor/clerk notation on delivery record (A - D = E)<br>(This number should be "0"; if not, re-check your figures. If still not "0" and you are unable to reconcile, contact the Property Tax & Elections Office.)                         | E <u>0</u>      | E <u>0</u>      | E <u>0</u>      | E <u>0</u>      |

\*Entered into ERS

Precinct Summary Statement  
State General Election: November 5, 2024

Municipality Northfield Twp

Ward \_\_\_\_\_ Precinct \_\_\_\_\_

County Rice AB/MB RC DB NF DB TOTAL

Number of election judges who worked in this precinct (Total number of judges for the precinct for the entire day who signed the oath) 1. 10 1. 10 1. 10 1. 10

Number of voting booths in this precinct (Total number of standing/sitting booths or other types of voting spaces available in the polling place) 2. 6 2. 6 2. 6 2. 6

REGISTRATION STATISTICS

Number of persons registered at 7 a.m. (This number is found on the Election Precinct Certification Form located in your Head Judge Book) \*3. 141 \*3. 141 \*3. 141 \*3. 141

Number of new registrants on election day (This number is found on the Summary Report you printed from the poll pad) \*4. 0 \*4. 0 \*4. 2 \*4. 2

BALLOTS DELIVERED TO THE PRECINCT

Ballots delivered as certified by the clerk (This number is found on the Election Precinct Certification Form located in your Head Judge Book) 5. 0 5. 0 5. 0 5. 0

Ballot count adjustments from incident log (+/-) (Check your incident log for any differences found when judges counted the number of ballots in each opened package and any other notations that would affect the number of ballots for your precinct) 6. 0 6. 0 6. 0 6. 0

Number of unofficial ballots made (This number will most likely be "0" unless you ran out of official ballots) 7. 0 7. 0 7. 0 7. 0

Number of absentee ballots delivered 8. 19 8. 0 8. 14 8. 33

Total number of ballots delivered to precinct (5+6+7+8 = A) A 19 A 0 A 14 A 33

BALLOTS NOT IN THE BALLOT BOX

Number of spoiled ballots (Number of ballots in the spoiled ballot envelope) \*9. 0 \*9. 0 \*9. 1 \*9. 1

Number of originals for which duplicates made (Number of ballots in the duplicate ballot envelope) \*10. 2 \*10. 0 \*10. 0 \*10. 2

Number of rejected absentees \*11. 1 \*11. 0 \*11. 0 \*11. 1

Number of unused ballots (Count the number of unused ballots at the end of the day, including those ballots in unopened packages plus ballots not used from opened packages) 12. 0 12. 0 12. 0 12. 0

Total number of ballots not in the ballot box (9+10+11+12 = B) B 3 B 0 B 1 B 4

BALLOTS CAST IN THE BALLOT BOX

Number of signatures on electronic roster (preregistered + EDR) (This number is found on the Summary Report you printed from the poll pad and should equal the Public Count and Total Paper Sheets on the DS200 Results Tape) \*13. 0 \*13. 0 \*13. 0 \*13. 0

Number of accepted regular, military and overseas absentee & mail ballots \*14. 16 \*14. 0 \*14. 13 \*14. 29

Number of accepted federal only absentee ballots \*15. 0 \*15. 0 \*15. 0 \*15. 0

Number of accepted presidential only absentee ballots \*16. 0 \*16. 0 \*16. 0 \*16. 0

Total number of ballots in the ballot box (= persons voting) (13+14+15+16 = C) C 16 C 0 C 13 C 29

BALLOTS RETURNED FROM THE PRECINCT

Ballots returned from the precinct (B + C = D) D 19 D 0 D 14 D 33

Difference for auditor/clerk notation on delivery record (A - D = E) (This number should be "0"; if not, re-check your figures. If still not "0" and you are unable to reconcile, contact the Property Tax & Elections Office.) E 0 E 0 E 0 E 0

\*Entered into ERS



Precinct Summary Statement  
State General Election: November 5, 2024

Municipality Northfield Precinct 2  
Ward \_\_\_\_\_  
County Rice

|  | AB/MB          | RC DB          | NF DB          | TOTAL          |
|--|----------------|----------------|----------------|----------------|
| Number of election judges who worked in this precinct<br>(Total number of judges for the precinct for the entire day who signed the oath)  | 1. <u>10</u>   | 1. <u>10</u>   | 1. <u>10</u>   | 1. <u>10</u>   |
| Number of voting booths in this precinct<br>(Total number of standing/sitting booths or other types of voting spaces available in the polling place)   | 2. <u>6</u>    | 2. <u>6</u>    | 2. <u>6</u>    | 2. <u>6</u>    |
| <b>REGISTRATION STATISTICS</b>   |                |                |                |                |
| Number of persons registered at 7 a.m.<br>(This number is found on the Election Precinct Certification Form located in your Head Judge Book)   | *3. <u>497</u> | *3. <u>497</u> | *3. <u>497</u> | *3. <u>497</u> |
| Number of new registrants on election day<br>(This number is found on the Summary Report you printed from the poll pad)  | *4. <u>0</u>   | *4. <u>1</u>   | *4. <u>1</u>   | *4. <u>2</u>   |
| <b>BALLOTS DELIVERED TO THE PRECINCT</b>   |                |                |                |                |
| Ballots delivered as certified by the clerk<br>(This number is found on the Election Precinct Certification Form located in your Head Judge Book)  | 5. <u>0</u>    | 5. <u>0</u>    | 5. <u>0</u>    | 5. <u>0</u>    |
| Ballot count adjustments from incident log (+/-)<br>(Check your incident log for any differences found when judges counted the number of ballots in each opened package and any other notations that would affect the number of ballots for your precinct) | 6. <u>0</u>    | 6. <u>0</u>    | 6. <u>0</u>    | 6. <u>0</u>    |
| Number of unofficial ballots made<br>(This number will most likely be "0" unless you ran out of official ballots)  | 7. <u>0</u>    | 7. <u>0</u>    | 7. <u>0</u>    | 7. <u>0</u>    |
| Number of absentee ballots delivered   | 8. <u>51</u>   | 8. <u>2</u>    | 8. <u>50</u>   | 8. <u>103</u>  |
| Total number of ballots delivered to precinct (5+6+7+8 = A)  | A <u>51</u>    | A <u>2</u>     | A <u>50</u>    | A <u>103</u>   |
| <b>BALLOTS NOT IN THE BALLOT BOX</b>   |                |                |                |                |
| Number of spoiled ballots<br>(Number of ballots in the spoiled ballot envelope)  | *9. <u>1</u>   | *9. <u>0</u>   | *9. <u>1</u>   | *9. <u>2</u>   |
| Number of originals for which duplicates made<br>(Number of ballots in the duplicate ballot envelope)  | *10. <u>5</u>  | *10. <u>0</u>  | *10. <u>0</u>  | *10. <u>5</u>  |
| Number of rejected absentees   | *11. <u>2</u>  | *11. <u>0</u>  | *11. <u>0</u>  | *11. <u>2</u>  |
| Number of unused ballots<br>(Count the number of unused ballots at the end of the day, including those ballots in unopened packages plus ballots not used from opened packages)  | 12. <u>0</u>   | 12. <u>0</u>   | 12. <u>0</u>   | 12. <u>0</u>   |
| Total number of ballots not in the ballot box (9+10+11+12 = B)   | B <u>8</u>     | B <u>0</u>     | B <u>1</u>     | B <u>9</u>     |
| <b>BALLOTS CAST IN THE BALLOT BOX</b>  |                |                |                |                |
| Number of signatures on electronic roster (preregistered + EDR)<br>(This number is found on the Summary Report you printed from the poll pad and should equal the Public Count and Total Paper Sheets on the DS200 Results Tape)                           | *13. <u>0</u>  | *13. <u>0</u>  | *13. <u>0</u>  | *13. <u>0</u>  |
| Number of accepted regular, military and overseas absentee & mail ballots  | *14. <u>42</u> | *14. <u>2</u>  | *14. <u>49</u> | *14. <u>93</u> |
| Number of accepted federal only absentee ballots   | *15. <u>1</u>  | *15. <u>0</u>  | *15. <u>0</u>  | *15. <u>1</u>  |
| Number of accepted presidential only absentee ballots  | *16. <u>0</u>  | *16. <u>0</u>  | *16. <u>0</u>  | *16. <u>0</u>  |
| Total number of ballots in the ballot box (= persons voting) (13+14+15+16 = C)   | C <u>43</u>    | C <u>2</u>     | C <u>49</u>    | C <u>94</u>    |
| <b>BALLOTS RETURNED FROM THE PRECINCT</b>  |                |                |                |                |
| Ballots returned from the precinct (B + C = D)   | D <u>51</u>    | D <u>2</u>     | D <u>50</u>    | D <u>103</u>   |
| Difference for auditor/clerk notation on delivery record (A - D = E)<br>(This number should be "0"; if not, re-check your figures. If still not "0" and you are unable to reconcile, contact the Property Tax & Elections Office.)                         | E <u>0</u>     | E <u>0</u>     | E <u>0</u>     | E <u>0</u>     |

\*Entered into ERS

Precinct Summary Statement  
State General Election: November 5, 2024

Municipality Webster

Ward \_\_\_\_\_ Precinct \_\_\_\_\_

County Rice

|  | AB/MB | RC DB | NF DB | TOTAL |
|--|-------|-------|-------|-------|
|--|-------|-------|-------|-------|

|   |              |              |              |              |
|---|--------------|--------------|--------------|--------------|
| Number of election judges who worked in this precinct<br>(Total number of judges for the precinct for the entire day who signed the oath) | 1. <u>10</u> | 1. <u>10</u> | 1. <u>10</u> | 1. <u>10</u> |
|---|--------------|--------------|--------------|--------------|

|  |             |             |             |             |
|--|-------------|-------------|-------------|-------------|
| Number of voting booths in this precinct<br>(Total number of standing/sitting booths or other types of voting spaces available in the polling place) | 2. <u>6</u> | 2. <u>6</u> | 2. <u>6</u> | 2. <u>6</u> |
|--|-------------|-------------|-------------|-------------|

REGISTRATION STATISTICS

|  |                 |                 |                 |                 |
|--|-----------------|-----------------|-----------------|-----------------|
| Number of persons registered at 7 a.m.<br>(This number is found on the Election Precinct Certification Form located in your Head Judge Book) | *3. <u>1386</u> | *3. <u>1386</u> | *3. <u>1386</u> | *3. <u>1386</u> |
|--|-----------------|-----------------|-----------------|-----------------|

|   |              |              |              |               |
|---|--------------|--------------|--------------|---------------|
| Number of new registrants on election day<br>(This number is found on the Summary Report you printed from the poll pad) | *4. <u>4</u> | *4. <u>1</u> | *4. <u>9</u> | *4. <u>14</u> |
|---|--------------|--------------|--------------|---------------|

BALLOTS DELIVERED TO THE PRECINCT

|   |             |             |             |             |
|---|-------------|-------------|-------------|-------------|
| Ballots delivered as certified by the clerk<br>(This number is found on the Election Precinct Certification Form located in your Head Judge Book) | 5. <u>0</u> | 5. <u>0</u> | 5. <u>0</u> | 5. <u>0</u> |
|---|-------------|-------------|-------------|-------------|

|  |             |             |             |             |
|--|-------------|-------------|-------------|-------------|
| Ballot count adjustments from incident log (+/-)<br>(Check your incident log for any differences found when judges counted the number of ballots in each opened package and any other notations that would affect the number of ballots for your precinct) | 6. <u>0</u> | 6. <u>0</u> | 6. <u>0</u> | 6. <u>0</u> |
|--|-------------|-------------|-------------|-------------|

|   |             |             |             |             |
|---|-------------|-------------|-------------|-------------|
| Number of unofficial ballots made<br>(This number will most likely be "0" unless you ran out of official ballots) | 7. <u>0</u> | 7. <u>0</u> | 7. <u>0</u> | 7. <u>0</u> |
|---|-------------|-------------|-------------|-------------|

|   |               |              |               |               |
|---|---------------|--------------|---------------|---------------|
| Number of absentee ballots delivered                        | 8. <u>147</u> | 8. <u>43</u> | 8. <u>123</u> | 8. <u>333</u> |
| Total number of ballots delivered to precinct (5+6+7+8 = A) | A <u>147</u>  | A <u>43</u>  | A <u>123</u>  | A <u>333</u>  |

BALLOTS NOT IN THE BALLOT BOX

|   |              |              |              |              |
|---|--------------|--------------|--------------|--------------|
| Number of spoiled ballots<br>(Number of ballots in the spoiled ballot envelope) | *9. <u>1</u> | *9. <u>0</u> | *9. <u>5</u> | *9. <u>6</u> |
|---|--------------|--------------|--------------|--------------|

|   |               |               |               |               |
|---|---------------|---------------|---------------|---------------|
| Number of originals for which duplicates made<br>(Number of ballots in the duplicate ballot envelope) | *10. <u>7</u> | *10. <u>0</u> | *10. <u>0</u> | *10. <u>7</u> |
|---|---------------|---------------|---------------|---------------|

|                              |               |               |               |               |
|------------------------------|---------------|---------------|---------------|---------------|
| Number of rejected absentees | *11. <u>7</u> | *11. <u>0</u> | *11. <u>0</u> | *11. <u>7</u> |
|------------------------------|---------------|---------------|---------------|---------------|

|   |              |              |              |              |
|---|--------------|--------------|--------------|--------------|
| Number of unused ballots<br>(Count the number of unused ballots at the end of the day, including those ballots in unopened packages plus ballots not used from opened packages) | 12. <u>0</u> | 12. <u>0</u> | 12. <u>0</u> | 12. <u>0</u> |
| Total number of ballots not in the ballot box (9+10+11+12 = B)  | B <u>15</u>  | B <u>0</u>   | B <u>5</u>   | B <u>20</u>  |

BALLOTS CAST IN THE BALLOT BOX

|  |               |               |               |               |
|--|---------------|---------------|---------------|---------------|
| Number of signatures on electronic roster (preregistered + EDR)<br>(This number is found on the Summary Report you printed from the poll pad and should equal the Public Count and Total Paper Sheets on the DS200 Results Tape) | *13. <u>0</u> | *13. <u>0</u> | *13. <u>0</u> | *13. <u>0</u> |
|--|---------------|---------------|---------------|---------------|

|   |                 |                |                 |                 |
|---|-----------------|----------------|-----------------|-----------------|
| Number of accepted regular, military and overseas absentee & mail ballots | *14. <u>101</u> | *14. <u>43</u> | *14. <u>118</u> | *14. <u>312</u> |
|---|-----------------|----------------|-----------------|-----------------|

|  |               |               |               |               |
|--|---------------|---------------|---------------|---------------|
| Number of accepted federal only absentee ballots | *15. <u>1</u> | *15. <u>0</u> | *15. <u>0</u> | *15. <u>1</u> |
|--|---------------|---------------|---------------|---------------|

|  |               |               |               |               |
|--|---------------|---------------|---------------|---------------|
| Number of accepted presidential only absentee ballots                          | *16. <u>0</u> | *16. <u>0</u> | *16. <u>0</u> | *16. <u>0</u> |
| Total number of ballots in the ballot box (= persons voting) (13+14+15+16 = C) | C <u>152</u>  | C <u>43</u>   | C <u>118</u>  | C <u>313</u>  |

BALLOTS RETURNED FROM THE PRECINCT

|  |              |             |              |              |
|--|--------------|-------------|--------------|--------------|
| Ballots returned from the precinct (B + C = D) | D <u>167</u> | D <u>43</u> | D <u>123</u> | D <u>333</u> |
|--|--------------|-------------|--------------|--------------|

|  |            |            |            |            |
|--|------------|------------|------------|------------|
| Difference for auditor/clerk notation on delivery record (A - D = E)<br>(This number should be "0"; if not, re-check your figures. If still not "0" and you are unable to reconcile, contact the Property Tax & Elections Office.) | E <u>0</u> | E <u>0</u> | E <u>0</u> | E <u>0</u> |
|--|------------|------------|------------|------------|

\*Entered into ERS

Precinct Summary Statement  
General Election: November 5, 2024

Municipality Bridgewater Township  Check if AB/DB

Ward \_\_\_\_\_ Precinct \_\_\_\_\_

County Rice

Number of election judges who worked in this precinct 1. 17  
(Total number of judges for the precinct for the entire day who signed the oath)

Number of voting booths in this precinct 2. 9  
(Total number of standing/sitting booths or other types of voting spaces available in the polling place)

REGISTRATION STATISTICS

Number of persons registered at 7 a.m. \*3. 1352  
(This number is found on the Precinct Certification Form located in your Head Judge Book)

Number of new registrants on election day \*4. 45  
(This number is found on the Summary Report you printed from the poll pad)

BALLOTS DELIVERED TO THE PRECINCT

Ballots delivered as certified by the clerk 5. 1650  
(This number is found on the Precinct Certification Form located in your Head Judge Book)

Ballot count adjustments from incident log (+/-) 6. 0  
(Check your incident log for any differences found when judges counted the number of ballots in each opened package and any other notations that would affect the number of ballots for your precinct)

Number of unofficial ballots made 7. 0  
(This number will most likely be "0" unless you ran out of official ballots)

Number of absentee ballots delivered 8. 0

Total number of ballots delivered to precinct (5+6+7+8 = A) 1650  
A 1650

BALLOTS NOT IN THE BALLOT BOX

Number of spoiled ballots \*9. 25  
(Number of ballots in the spoiled ballot envelope)

Number of originals for which duplicates made \*10. 0  
(Number of ballots in the duplicate ballot envelope)

Number of rejected absentees \*11. 0

Number of unused ballots 12. 784  
(Count the number of unused ballots at the end of the day, including those ballots in unopened packages plus ballots not used from opened packages)

Total number of ballots not in the ballot box (9+10+11+12 = B) 809  
B 809

BALLOTS CAST IN THE BALLOT BOX

Number of signatures on electronic roster \*13. 841  
(This number is the number of Check-ins found on the Summary Report you printed from the poll pad and should equal the Public Count and Total Paper Sheets on the DS200 Results Tape)

Number of accepted regular, military and overseas absentee & mail ballots \*14. 0

Number of accepted federal only absentee ballots \*15. N/A

Number of accepted presidential only absentee ballots \*16. N/A

Total number of ballots in the ballot box (= persons voting) (13+14+15+16 = C) 841  
C 841

BALLOTS RETURNED FROM THE PRECINCT

Ballots returned from the precinct (B + C = D) 1650  
D 1650

Difference for auditor/clerk notation on delivery record (A - D = E) 0  
(This number should be "0"; if not, re-check your figures. If still not "0" and you are unable to reconcile, contact the Property Tax & Elections Office)

Ballots cast in the ballot box verified by hand count (C - F = 0) 841  
(The total number of ballots in the ballot box as verified by hand count)

Rebecca Benedict  
Election Judge Signature

[Signature]  
Election Judge Signature

[Signature]  
PTE Verification

\*Entered into ERS

Precinct Summary Statement  
General Election: November 5, 2024

Municipality CAMDEN CITY TOWNSHIP  Check if AB/DB

Ward \_\_\_\_\_ Precinct \_\_\_\_\_

County Rice

Number of election judges who worked in this precinct 10  
(Total number of judges for the precinct for the entire day who signed the oath)

Number of voting booths in this precinct 9  
(Total number of standing/sitting booths or other types of voting spaces available in the polling place)

REGISTRATION STATISTICS

Number of persons registered at 7 a.m. 884  
(This number is found on the Precinct Certification Form located in your Head Judge Book)

Number of new registrants on election day 55  
(This number is found on the Summary Report you printed from the poll pad)

BALLOTS DELIVERED TO THE PRECINCT

Ballots delivered as certified by the clerk 1300  
(This number is found on the Precinct Certification Form located in your Head Judge Book)

Ballot count adjustments from incident log (+/-) 0  
(Check your incident log for any differences found when judges counted the number of ballots in each opened package and any other notations that would affect the number of ballots for your precinct)

Number of unofficial ballots made 0  
(This number will most likely be "0" unless you ran out of official ballots)

Number of absentee ballots delivered 0

Total number of ballots delivered to precinct (5+6+7+8 = A) 1300

BALLOTS NOT IN THE BALLOT BOX

Number of spoiled ballots 15  
(Number of ballots in the spoiled ballot envelope)

Number of originals for which duplicates made 0  
(Number of ballots in the duplicate ballot envelope)

Number of rejected absentees 0

Number of unused ballots 635  
(Count the number of unused ballots at the end of the day, including those ballots in unopened packages plus ballots not used from opened packages)

Total number of ballots not in the ballot box (9+10+11+12 = B) 650

BALLOTS CAST IN THE BALLOT BOX

Number of signatures on electronic roster 650  
(This number is the number of Check-ins found on the Summary Report you printed from the poll pad and should equal the Public Count and Total Paper Sheets on the DS200 Results Tape)

Number of accepted regular, military and overseas absentee & mail ballots 0

Number of accepted federal only absentee ballots N/A

Number of accepted presidential only absentee ballots N/A

Total number of ballots in the ballot box (= persons voting) (13+14+15+16 = C) 650

BALLOTS RETURNED FROM THE PRECINCT

Ballots returned from the precinct (B + C = D) 1300

Difference for auditor/clerk notation on delivery record (A - D = E) 0  
(This number should be "0"; if not, re-check your figures. If still not "0" and you are unable to reconcile, contact the Property Tax & Elections Office)

Ballots cast in the ballot box verified by hand count (C - F = 0) 650  
(The total number of ballots in the ballot box as verified by hand count)

Marilyn Canon  
Election Judge Signature

Amber Vanath  
Election Judge Signature

[Signature]  
PTE Verification

Precinct Summary Statement  
General Election: November 5, 2024

Poll

Municipality Dannison

Check if AB/DB

Ward \_\_\_\_\_ Precinct \_\_\_\_\_

County Rice

Number of election judges who worked in this precinct 1. 10  
(Total number of judges for the precinct for the entire day who signed the oath)

Number of voting booths in this precinct 2. 6  
(Total number of standing/sitting booths or other types of voting spaces available in the polling place)

REGISTRATION STATISTICS

Number of persons registered at 7 a.m. \*3. 11  
(This number is found on the Precinct Certification Form located in your Head Judge Book)

Number of new registrants on election day \*4. 0  
(This number is found on the Summary Report you printed from the poll pad)

BALLOTS DELIVERED TO THE PRECINCT

Ballots delivered as certified by the clerk 5. 25  
(This number is found on the Precinct Certification Form located in your Head Judge Book)

Ballot count adjustments from incident log (+/-) 6. 0  
(Check your incident log for any differences found when judges counted the number of ballots in each opened package and any other notations that would affect the number of ballots for your precinct)

Number of unofficial ballots made 7. 0  
(This number will most likely be "0" unless you ran out of official ballots)

Number of absentee ballots delivered 8. 0

Total number of ballots delivered to precinct (5+6+7+8 = A) A 25

BALLOTS NOT IN THE BALLOT BOX

Number of spoiled ballots \*9. 0  
(Number of ballots in the spoiled ballot envelope)

Number of originals for which duplicates made \*10. 0  
(Number of ballots in the duplicate ballot envelope)

Number of rejected absentees \*11. 0

Number of unused ballots 12. 25  
(Count the number of unused ballots at the end of the day, including those ballots in unopened packages plus ballots not used from opened packages)

Total number of ballots not in the ballot box (9+10+11+12 = B) B 25

BALLOTS CAST IN THE BALLOT BOX

Number of signatures on electronic roster \*13. 0  
(This number is the number of Check-ins found on the Summary Report you printed from the poll pad and should equal the Public Count and Total Paper Sheets on the DS200 Results Tape)

Number of accepted regular, military and overseas absentee & mail ballots \*14. 0

Number of accepted federal only absentee ballots \*15. N/A

Number of accepted presidential only absentee ballots \*16. N/A

Total number of ballots in the ballot box (= persons voting) (13+14+15+16 = C) C 0

BALLOTS RETURNED FROM THE PRECINCT

Ballots returned from the precinct (B + C = D) D 25

Difference for auditor/clerk notation on delivery record (A - D = E) E 0  
(This number should be "0"; if not, re-check your figures. If still not "0" and you are unable to reconcile, contact the Property Tax & Elections Office)

Ballots cast in the ballot box verified by hand count (C - F = 0) F 0  
(The total number of ballots in the ballot box as verified by hand count)

[Signature]  
Election Judge Signature

[Signature]  
Election Judge Signature

[Signature]  
PTE Verification

Precinct Summary Statement  
General Election: November 5, 2024

Municipality City of DUNDAS  Check if AB/DB

Ward \_\_\_\_\_ Precinct \_\_\_\_\_

County Rice

Number of election judges who worked in this precinct 1. 9  
(Total number of judges for the precinct for the entire day who signed the oath)

Number of voting booths in this precinct 2. 12  
(Total number of standing/sitting booths or other types of voting spaces available in the polling place)

REGISTRATION STATISTICS

Number of persons registered at 7 a.m. \*3. 1250  
(This number is found on the Precinct Certification Form located in your Head Judge Book)

Number of new registrants on election day \*4. 71  
(This number is found on the Summary Report you printed from the poll pad)

BALLOTS DELIVERED TO THE PRECINCT

Ballots delivered as certified by the clerk 5. 1500  
(This number is found on the Precinct Certification Form located in your Head Judge Book)

Ballot count adjustments from incident log (+/-) 6. ~~10~~ +6  
(Check your incident log for any differences found when judges counted the number of ballots in each opened package and any other notations that would affect the number of ballots for your precinct)

Number of unofficial ballots made 7. 0  
(This number will most likely be "0" unless you ran out of official ballots)

Number of absentee ballots delivered 8. 0

Total number of ballots delivered to precinct (5+6+7+8 = A) A 1473 1500 AG

BALLOTS NOT IN THE BALLOT BOX

Number of spoiled ballots \*9. 7  
(Number of ballots in the spoiled ballot envelope)

Number of originals for which duplicates made \*10. 9  
(Number of ballots in the duplicate ballot envelope)

Number of rejected absentees \*11. 0

Number of unused ballots 12. 734  
(Count the number of unused ballots at the end of the day, including those ballots in unopened packages plus ballots not used from opened packages)

Total number of ballots not in the ballot box (9+10+11+12 = B) B 741

BALLOTS CAST IN THE BALLOT BOX

Number of signatures on electronic roster \*13. 759  
(This number is the number of Check-ins found on the Summary Report you printed from the poll pad and should equal the Public Count and Total Paper Sheets on the DS200 Results Tape)

Number of accepted regular, military and overseas absentee & mail ballots \*14. 0

Number of accepted federal only absentee ballots \*15. N/A

Number of accepted presidential only absentee ballots \*16. N/A

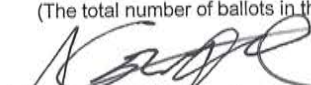
Total number of ballots in the ballot box (= persons voting) (13+14+15+16 = C) C 759


BALLOTS RETURNED FROM THE PRECINCT

Ballots returned from the precinct (B + C = D) D 1500

Difference for auditor/clerk notation on delivery record (A - D = E) E 9  
(This number should be "0"; if not, re-check your figures. If still not "0" and you are unable to reconcile, contact the Property Tax & Elections Office)

Ballots cast in the ballot box verified by hand count (C - F = 0) F 759  
(The total number of ballots in the ballot box as verified by hand count)

  
Election Judge Signature

  
Election Judge Signature

  
PTE Verification

\*Entered into ERS

Precinct Summary Statement  
General Election: November 5, 2024

Municipality ERIN TOWNSHIP  Check if AB/DB

Ward \_\_\_\_\_ Precinct \_\_\_\_\_

County Rice

Number of election judges who worked in this precinct 1. 6  
(Total number of judges for the precinct for the entire day who signed the oath)

Number of voting booths in this precinct 2. 8  
(Total number of standing/sitting booths or other types of voting spaces available in the polling place)

REGISTRATION STATISTICS

Number of persons registered at 7 a.m. \*3. 645  
(This number is found on the Precinct Certification Form located in your Head Judge Book)

Number of new registrants on election day \*4. 37  
(This number is found on the Summary Report you printed from the poll pad)

BALLOTS DELIVERED TO THE PRECINCT

Ballots delivered as certified by the clerk 5. 900  
(This number is found on the Precinct Certification Form located in your Head Judge Book)

Ballot count adjustments from incident log (+/-) 6. 0  
(Check your incident log for any differences found when judges counted the number of ballots in each opened package and any other notations that would affect the number of ballots for your precinct)

Number of unofficial ballots made 7. 0  
(This number will most likely be "0" unless you ran out of official ballots)

Number of absentee ballots delivered 8. 0

Total number of ballots delivered to precinct (5+6+7+8 = A) A 900

BALLOTS NOT IN THE BALLOT BOX

Number of spoiled ballots \*9. 13  
(Number of ballots in the spoiled ballot envelope)

Number of originals for which duplicates made \*10. 0  
(Number of ballots in the duplicate ballot envelope)

Number of rejected absentees \*11. 0

Number of unused ballots 12. 382  
(Count the number of unused ballots at the end of the day, including those ballots in unopened packages plus ballots not used from opened packages)

Total number of ballots not in the ballot box (9+10+11+12 = B) B 395

BALLOTS CAST IN THE BALLOT BOX

Number of signatures on electronic roster \*13. 505  
(This number is the number of Check-ins found on the Summary Report you printed from the poll pad and should equal the Public Count and Total Paper Sheets on the DS200 Results Tape)

Number of accepted regular, military and overseas absentee & mail ballots \*14. 0

Number of accepted federal only absentee ballots \*15. N/A

Number of accepted presidential only absentee ballots \*16. N/A

Total number of ballots in the ballot box (= persons voting) (13+14+15+16 = C) C 505

BALLOTS RETURNED FROM THE PRECINCT

Ballots returned from the precinct (B + C = D) D 900

Difference for auditor/clerk notation on delivery record (A - D = E) E 0  
(This number should be "0"; if not, re-check your figures. If still not "0" and you are unable to reconcile, contact the Property Tax & Elections Office)

Ballots cast in the ballot box verified by hand count (C - F = 0) F 505  
(The total number of ballots in the ballot box as verified by hand count)

Sharon Kaurishat  
Election Judge Signature

James L. Lehal  
Election Judge Signature

[Signature]  
PTE Verification

\*Entered into ERS

Precinct Summary Statement  
General Election: November 5, 2024

Municipality Forest Township  Check if AB/DB

Ward \_\_\_\_\_ Precinct \_\_\_\_\_

County Rice

Number of election judges who worked in this precinct 14  
(Total number of judges for the precinct for the entire day who signed the oath)

Number of voting booths in this precinct 10  
(Total number of standing/sitting booths or other types of voting spaces available in the polling place)

REGISTRATION STATISTICS

Number of persons registered at 7 a.m. 989  
(This number is found on the Precinct Certification Form located in your Head Judge Book)

Number of new registrants on election day 62  
(This number is found on the Summary Report you printed from the poll pad)

BALLOTS DELIVERED TO THE PRECINCT

Ballots delivered as certified by the clerk 1100  
(This number is found on the Precinct Certification Form located in your Head Judge Book)

Ballot count adjustments from incident log (+/-) 0  
(Check your incident log for any differences found when judges counted the number of ballots in each opened package and any other notations that would affect the number of ballots for your precinct)

Number of unofficial ballots made 0  
(This number will most likely be "0" unless you ran out of official ballots)

Number of absentee ballots delivered 0

Total number of ballots delivered to precinct (5+6+7+8 = A) 1100

BALLOTS NOT IN THE BALLOT BOX

Number of spoiled ballots 20  
(Number of ballots in the spoiled ballot envelope)

Number of originals for which duplicates made 0  
(Number of ballots in the duplicate ballot envelope)

Number of rejected absentees 0

Number of unused ballots 374  
(Count the number of unused ballots at the end of the day, including those ballots in unopened packages plus ballots not used from opened packages)

Total number of ballots not in the ballot box (9+10+11+12 = B) 394

BALLOTS CAST IN THE BALLOT BOX

Number of signatures on electronic roster 707  
(This number is the number of Check-ins found on the Summary Report you printed from the poll pad and should equal the Public Count and Total Paper Sheets on the DS200 Results Tape)

Number of accepted regular, military and overseas absentee & mail ballots 0

Number of accepted federal only absentee ballots N/A

Number of accepted presidential only absentee ballots N/A

Total number of ballots in the ballot box (= persons voting) (13+14+15+16 = C) 707

BALLOTS RETURNED FROM THE PRECINCT

Ballots returned from the precinct (B + C = D) 1100

Difference for auditor/clerk notation on delivery record (A - D = E) —  
(This number should be "0"; if not, re-check your figures. If still not "0" and you are unable to reconcile, contact the Property Tax & Elections Office)

Ballots cast in the ballot box verified by hand count (C - F = 0) 707  
(The total number of ballots in the ballot box as verified by hand count)

Jan Keller  
Election Judge Signature

[Signature]  
Election Judge Signature

[Signature]  
PTE Verification

\*Entered into ERS



Precinct Summary Statement  
General Election: November 5, 2024

Municipality Northfield  Check if AB/DB

Ward 1 Precinct 1

County Rice

Number of election judges who worked in this precinct (Total number of judges for the precinct for the entire day who signed the oath) 1. 18

Number of voting booths in this precinct (Total number of standing/sitting booths or other types of voting spaces available in the polling place) 2. 13

REGISTRATION STATISTICS

Number of persons registered at 7 a.m. (This number is found on the Precinct Certification Form located in your Head Judge Book) \*3. 1928

Number of new registrants on election day (This number is found on the Summary Report you printed from the poll pad) \*4. 372

BALLOTS DELIVERED TO THE PRECINCT

Ballots delivered as certified by the clerk (This number is found on the Precinct Certification Form located in your Head Judge Book) 5. 2500

Ballot count adjustments from incident log (+/-) (Check your incident log for any differences found when judges counted the number of ballots in each opened package and any other notations that would affect the number of ballots for your precinct) 6. 0 ~~2~~

Number of unofficial ballots made (This number will most likely be "0" unless you ran out of official ballots) 7. 0

Number of absentee ballots delivered 8. 0

Total number of ballots delivered to precinct (5+6+7+8 = A) A 2500

BALLOTS NOT IN THE BALLOT BOX

Number of spoiled ballots (Number of ballots in the spoiled ballot envelope) \*9. 14

Number of originals for which duplicates made (Number of ballots in the duplicate ballot envelope) \*10. 0

Number of rejected absentees \*11. 0

Number of unused ballots (Count the number of unused ballots at the end of the day, including those ballots in unopened packages plus ballots not used from opened packages) 12. 1646

Total number of ballots not in the ballot box (9+10+11+12 = B) B 1660

BALLOTS CAST IN THE BALLOT BOX

Number of signatures on electronic roster (This number is the number of Check-ins found on the Summary Report you printed from the poll pad and should equal the Public Count and Total Paper Sheets on the DS200 Results Tape) \*13. 840

Number of accepted regular, military and overseas absentee & mail ballots \*14. 0

Number of accepted federal only absentee ballots \*15. N/A

Number of accepted presidential only absentee ballots \*16. N/A

Total number of ballots in the ballot box (= persons voting) (13+14+15+16 = C) C 840

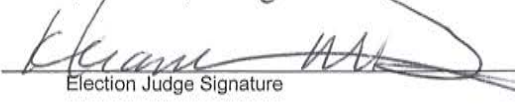
BALLOTS RETURNED FROM THE PRECINCT

Ballots returned from the precinct (B + C = D) D 2500

Difference for auditor/clerk notation on delivery record (A - D = E) (This number should be "0"; if not, re-check your figures. If still not "0" and you are unable to reconcile, contact the Property Tax & Elections Office) E 1660

Ballots cast in the ballot box verified by hand count (C - F = 0) (The total number of ballots in the ballot box as verified by hand count) - 0 - F 840

  
Election Judge Signature

  
Election Judge Signature

  
PTE Verification

\*Entered into ERS

Precinct Summary Statement  
General Election: November 5, 2024

Municipality Northfield  Check if AB/DB  
Ward 1 Precinct 2  
County Rice

Number of election judges who worked in this precinct (Total number of judges for the precinct for the entire day who signed the oath) 1. 17

Number of voting booths in this precinct (Total number of standing/sitting booths or other types of voting spaces available in the polling place) 2. 18

REGISTRATION STATISTICS

Number of persons registered at 7 a.m. (This number is found on the Precinct Certification Form located in your Head Judge Book) \*3. 2010

Number of new registrants on election day (This number is found on the Summary Report you printed from the poll pad) \*4. 61

BALLOTS DELIVERED TO THE PRECINCT

Ballots delivered as certified by the clerk (This number is found on the Precinct Certification Form located in your Head Judge Book) 5. 2900

Ballot count adjustments from incident log (+/-) (Check your incident log for any differences found when judges counted the number of ballots in each opened package and any other notations that would affect the number of ballots for your precinct) 6. 0

Number of unofficial ballots made (This number will most likely be "0" unless you ran out of official ballots) 7. 0

Number of absentee ballots delivered 8. 0

Total number of ballots delivered to precinct (5+6+7+8 = A) 2900

BALLOTS NOT IN THE BALLOT BOX

Number of spoiled ballots (Number of ballots in the spoiled ballot envelope) \*9. 15

Number of originals for which duplicates made (Number of ballots in the duplicate ballot envelope) \*10. 0

Number of rejected absentees \*11. 0

Number of unused ballots (Count the number of unused ballots at the end of the day, including those ballots in unopened packages plus ballots not used from opened packages) 12. 2090

Total number of ballots not in the ballot box (9+10+11+12 = B) 2105

BALLOTS CAST IN THE BALLOT BOX

Number of signatures on electronic roster (This number is the number of Check-ins found on the Summary Report you printed from the poll pad and should equal the Public Count and Total Paper Sheets on the DS200 Results Tape) \*13. 795

Number of accepted regular, military and overseas absentee & mail ballots \*14. 0

Number of accepted federal only absentee ballots \*15. N/A

Number of accepted presidential only absentee ballots \*16. N/A

Total number of ballots in the ballot box (= persons voting) (13+14+15+16 = C) 795

BALLOTS RETURNED FROM THE PRECINCT

Ballots returned from the precinct (B + C = D) 2900

Difference for auditor/clerk notation on delivery record (A - D = E) 0

Ballots cast in the ballot box verified by hand count (C - F = 0) (The total number of ballots in the ballot box as verified by hand count) 795

[Signature] Election Judge Signature      [Signature] Election Judge Signature      [Signature] PTE Verification

\*Entered into ERS

Precinct Summary Statement  
General Election: November 5, 2024

Municipality NORTHFIELD  Check if AB/DB

Ward 2 Precinct 1

County Rice

Number of election judges who worked in this precinct (Total number of judges for the precinct for the entire day who signed the oath) 1. 17

Number of voting booths in this precinct (Total number of standing/sitting booths or other types of voting spaces available in the polling place) 2. 17

REGISTRATION STATISTICS

Number of persons registered at 7 a.m. (This number is found on the Precinct Certification Form located in your Head Judge Book) \*3. 1831

Number of new registrants on election day (This number is found on the Summary Report you printed from the poll pad) \*4. 69

BALLOTS DELIVERED TO THE PRECINCT

Ballots delivered as certified by the clerk (This number is found on the Precinct Certification Form located in your Head Judge Book) 5. 2600

Ballot count adjustments from incident log (+/-) (Check your incident log for any differences found when judges counted the number of ballots in each opened package and any other notations that would affect the number of ballots for your precinct) 6. 0

Number of unofficial ballots made (This number will most likely be "0" unless you ran out of official ballots) 7. 0

Number of absentee ballots delivered 8. 0

Total number of ballots delivered to precinct (5+6+7+8 = A) A 2600

BALLOTS NOT IN THE BALLOT BOX

Number of spoiled ballots (Number of ballots in the spoiled ballot envelope) \*9. 16

Number of originals for which duplicates made (Number of ballots in the duplicate ballot envelope) \*10. 0

Number of rejected absentees \*11. 0

Number of unused ballots (Count the number of unused ballots at the end of the day, including those ballots in unopened packages plus ballots not used from opened packages) 12. 1651

Total number of ballots not in the ballot box (9+10+11+12 = B) B 1667

BALLOTS CAST IN THE BALLOT BOX

Number of signatures on electronic roster (This number is the number of Check-ins found on the Summary Report you printed from the poll pad and should equal the Public Count and Total Paper Sheets on the DS200 Results Tape) \*13. 933

Number of accepted regular, military and overseas absentee & mail ballots \*14. 0

Number of accepted federal only absentee ballots \*15. N/A

Number of accepted presidential only absentee ballots \*16. N/A

Total number of ballots in the ballot box (= persons voting) (13+14+15+16 = C) C 933

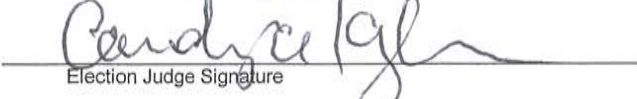
BALLOTS RETURNED FROM THE PRECINCT

Ballots returned from the precinct (B + C = D) D 2600

Difference for auditor/clerk notation on delivery record (A - D = E) (This number should be "0"; if not, re-check your figures. If still not "0" and you are unable to reconcile, contact the Property Tax & Elections Office) E 0

Ballots cast in the ballot box verified by hand count (C - F = 0) (The total number of ballots in the ballot box as verified by hand count) F 933

  
Election Judge Signature

  
Election Judge Signature

  
PTE Verification

\*Entered into ERS

Precinct Summary Statement  
General Election: November 5, 2024

Municipality Northfield  Check if AB/DB  
Ward 2 Precinct 2  
County Rice

Number of election judges who worked in this precinct (Total number of judges for the precinct for the entire day who signed the oath) 1. 18

Number of voting booths in this precinct (Total number of standing/sitting booths or other types of voting spaces available in the polling place) 2. 14

REGISTRATION STATISTICS

Number of persons registered at 7 a.m. (This number is found on the Precinct Certification Form located in your Head Judge Book) \*3. 1860

Number of new registrants on election day (This number is found on the Summary Report you printed from the poll pad) \*4. 94

BALLOTS DELIVERED TO THE PRECINCT

Ballots delivered as certified by the clerk (This number is found on the Precinct Certification Form located in your Head Judge Book) 5. 2500

Ballot count adjustments from incident log (+/-) (Check your incident log for any differences found when judges counted the number of ballots in each opened package and any other notations that would affect the number of ballots for your precinct) 6. 0

Number of unofficial ballots made (This number will most likely be "0" unless you ran out of official ballots) 7. 0

Number of absentee ballots delivered 8. 0

Total number of ballots delivered to precinct (5+6+7+8 = A) A 2500

BALLOTS NOT IN THE BALLOT BOX

Number of spoiled ballots (Number of ballots in the spoiled ballot envelope) \*9. 20

Number of originals for which duplicates made (Number of ballots in the duplicate ballot envelope) \*10. 0

Number of rejected absentees \*11. 0

Number of unused ballots (Count the number of unused ballots at the end of the day, including those ballots in unopened packages plus ballots not used from opened packages) 12. 1595

Total number of ballots not in the ballot box (9+10+11+12 = B) B 1615

BALLOTS CAST IN THE BALLOT BOX

Number of signatures on electronic roster (This number is the number of Check-ins found on the Summary Report you printed from the poll pad and should equal the Public Count and Total Paper Sheets on the DS200 Results Tape) \*13. 885

Number of accepted regular, military and overseas absentee & mail ballots \*14. 0

Number of accepted federal only absentee ballots \*15. N/A

Number of accepted presidential only absentee ballots \*16. N/A

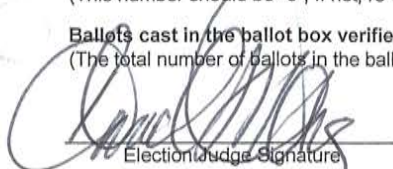
Total number of ballots in the ballot box (= persons voting) (13+14+15+16 = C) C 885

BALLOTS RETURNED FROM THE PRECINCT

Ballots returned from the precinct (B + C = D) D 2500

Difference for auditor/clerk notation on delivery record (A - D = E) (This number should be "0"; if not, re-check your figures. If still not "0" and you are unable to reconcile, contact the Property Tax & Elections Office) E 0

Ballots cast in the ballot box verified by hand count (C - F = 0) (The total number of ballots in the ballot box as verified by hand count) F 885

  
Election Judge Signature

  
Election Judge Signature

  
PTE Verification

Precinct Summary Statement  
General Election: November 5, 2024

Municipality Norwalk  Check if AB/DB  
Ward 3 Precinct 1  
County Rice

Number of election judges who worked in this precinct 1. 17  
(Total number of judges for the precinct for the entire day who signed the oath)

Number of voting booths in this precinct 2. 16  
(Total number of standing/sitting booths or other types of voting spaces available in the polling place)

REGISTRATION STATISTICS

Number of persons registered at 7 a.m. \*3. 1964  
(This number is found on the Precinct Certification Form located in your Head Judge Book)

Number of new registrants on election day \*4. 171  
(This number is found on the Summary Report you printed from the poll pad)

BALLOTS DELIVERED TO THE PRECINCT

Ballots delivered as certified by the clerk 5. 2700  
(This number is found on the Precinct Certification Form located in your Head Judge Book)

Ballot count adjustments from incident log (+/-) 6. 0  
(Check your incident log for any differences found when judges counted the number of ballots in each opened package and any other notations that would affect the number of ballots for your precinct)

Number of unofficial ballots made 7. 0  
(This number will most likely be "0" unless you ran out of official ballots)

Number of absentee ballots delivered 8. 0

Total number of ballots delivered to precinct (5+6+7+8 = A) A 2700

BALLOTS NOT IN THE BALLOT BOX

Number of spoiled ballots \*9. 25  
(Number of ballots in the spoiled ballot envelope)

Number of originals for which duplicates made \*10. 0  
(Number of ballots in the duplicate ballot envelope)

Number of rejected absentees \*11. 0

Number of unused ballots 12. 1699  
(Count the number of unused ballots at the end of the day, including those ballots in unopened packages plus ballots not used from opened packages)

Total number of ballots not in the ballot box (9+10+11+12 = B) B 1724

BALLOTS CAST IN THE BALLOT BOX

Number of signatures on electronic roster \*13. 976  
(This number is the number of Check-ins found on the Summary Report you printed from the poll pad and should equal the Public Count and Total Paper Sheets on the DS200 Results Tape)

Number of accepted regular, military and overseas absentee & mail ballots \*14. 0

Number of accepted federal only absentee ballots \*15. N/A

Number of accepted presidential only absentee ballots \*16. N/A

Total number of ballots in the ballot box (= persons voting) (13+14+15+16 = C) C 976

BALLOTS RETURNED FROM THE PRECINCT

Ballots returned from the precinct (B + C = D) D 2700

Difference for auditor/clerk notation on delivery record (A - D = E) E 0  
(This number should be "0"; if not, re-check your figures. If still not "0" and you are unable to reconcile, contact the Property Tax & Elections Office)

Ballots cast in the ballot box verified by hand count (C - F = 0) F 976  
(The total number of ballots in the ballot box as verified by hand count)

Rebecca M...  
Election Judge Signature

[Signature]  
Election Judge Signature

[Signature]  
PTE Verification

\*Entered into ERS

Precinct Summary Statement  
General Election: November 5, 2024

Municipality North Sully  Check if AB/DB  
Ward 4 Precinct 1  
County Rice

Number of election judges who worked in this precinct (Total number of judges for the precinct for the entire day who signed the oath) 1. 16

Number of voting booths in this precinct (Total number of standing/sitting booths or other types of voting spaces available in the polling place) 2. 14

REGISTRATION STATISTICS

Number of persons registered at 7 a.m. (This number is found on the Precinct Certification Form located in your Head Judge Book) \*3. 1657

Number of new registrants on election day (This number is found on the Summary Report you printed from the poll pad) \*4. 95

BALLOTS DELIVERED TO THE PRECINCT

Ballots delivered as certified by the clerk (This number is found on the Precinct Certification Form located in your Head Judge Book) 5. 2200

Ballot count adjustments from incident log (+/-) (Check your incident log for any differences found when judges counted the number of ballots in each opened package and any other notations that would affect the number of ballots for your precinct) 6. 0

Number of unofficial ballots made (This number will most likely be "0" unless you ran out of official ballots) 7. 0

Number of absentee ballots delivered 8. 0

Total number of ballots delivered to precinct (5+6+7+8 = A) A 2200

BALLOTS NOT IN THE BALLOT BOX

Number of spoiled ballots (Number of ballots in the spoiled ballot envelope) \*9. 12

Number of originals for which duplicates made (Number of ballots in the duplicate ballot envelope) \*10. 0

Number of rejected absentees \*11. 0

Number of unused ballots (Count the number of unused ballots at the end of the day, including those ballots in unopened packages plus ballots not used from opened packages) 12. 1435

Total number of ballots not in the ballot box (9+10+11+12 = B) B 1447

BALLOTS CAST IN THE BALLOT BOX

Number of signatures on electronic roster (This number is the number of Check-ins found on the Summary Report you printed from the poll pad and should equal the Public Count and Total Paper Sheets on the DS200 Results Tape) \*13. 753

Number of accepted regular, military and overseas absentee & mail ballots \*14. 0

Number of accepted federal only absentee ballots \*15. N/A

Number of accepted presidential only absentee ballots \*16. N/A

Total number of ballots in the ballot box (= persons voting) (13+14+15+16 = C) C 753

BALLOTS RETURNED FROM THE PRECINCT

Ballots returned from the precinct (B + C = D) D 2260

Difference for auditor/clerk notation on delivery record (A - D = E) (This number should be "0"; if not, re-check your figures. If still not "0" and you are unable to reconcile, contact the Property Tax & Elections Office) E 0

Ballots cast in the ballot box verified by hand count (C - F = 0) (The total number of ballots in the ballot box as verified by hand count) F 753

[Signature]  
Election Judge Signature

[Signature]  
Election Judge Signature

[Signature]  
PTE Verification

Precinct Summary Statement  
General Election: November 5, 2024

Municipality Northfield  Check if AB/DB  
Ward 4 Precinct 2  
County Rice

Number of election judges who worked in this precinct (Total number of judges for the precinct for the entire day who signed the oath) 1. 21

Number of voting booths in this precinct (Total number of standing/sitting booths or other types of voting spaces available in the polling place) 2. 16

REGISTRATION STATISTICS

Number of persons registered at 7 a.m. (This number is found on the Precinct Certification Form located in your Head Judge Book) \*3. 1287

Number of new registrants on election day (This number is found on the Summary Report you printed from the poll pad) \*4. 642

BALLOTS DELIVERED TO THE PRECINCT

Ballots delivered as certified by the clerk (This number is found on the Precinct Certification Form located in your Head Judge Book) 5. 1600

Ballot count adjustments from incident log (+/-) (Check your incident log for any differences found when judges counted the number of ballots in each opened package and any other notations that would affect the number of ballots for your precinct) 6. -1

Number of unofficial ballots made (This number will most likely be "0" unless you ran out of official ballots) 7. 0

Number of absentee ballots delivered 8. 0

Total number of ballots delivered to precinct (5+6+7+8 = A) A 1599

BALLOTS NOT IN THE BALLOT BOX

Number of spoiled ballots (Number of ballots in the spoiled ballot envelope) \*9. 35

Number of originals for which duplicates made (Number of ballots in the duplicate ballot envelope) \*10. 0

Number of rejected absentees \*11. 0

Number of unused ballots (Count the number of unused ballots at the end of the day, including those ballots in unopened packages plus ballots not used from opened packages) 12. 444

Total number of ballots not in the ballot box (9+10+11+12 = B) B 479

BALLOTS CAST IN THE BALLOT BOX

Number of signatures on electronic roster (This number is the number of Check-ins found on the Summary Report you printed from the poll pad and should equal the Public Count and Total Paper Sheets on the DS200 Results Tape) \*13. 1120

Number of accepted regular, military and overseas absentee & mail ballots \*14. 0

Number of accepted federal only absentee ballots \*15. N/A

Number of accepted presidential only absentee ballots \*16. N/A

Total number of ballots in the ballot box (= persons voting) (13+14+15+16 = C) C 1120

BALLOTS RETURNED FROM THE PRECINCT

Ballots returned from the precinct (B + C = D) D 1599

Difference for auditor/clerk notation on delivery record (A - D = E) E 0

Ballots cast in the ballot box verified by hand count (C - F = 0) (The total number of ballots in the ballot box as verified by hand count) F 1120

Rita Allin  
Election Judge Signature

David A. [Signature]  
Election Judge Signature

[Signature]  
PTE Verification

\*Entered into ERS

Precinct Summary Statement  
General Election: November 5, 2024

Municipality NFLD Twp  Check if AB/DB

Ward \_\_\_\_\_ Precinct #1

County Rice

Number of election judges who worked in this precinct (Total number of judges for the precinct for the entire day who signed the oath) 1. 14

Number of voting booths in this precinct (Total number of standing/sitting booths or other types of voting spaces available in the polling place) 2. 8

REGISTRATION STATISTICS

Number of persons registered at 7 a.m. (This number is found on the Precinct Certification Form located in your Head Judge Book) \*3. 141

Number of new registrants on election day (This number is found on the Summary Report you printed from the poll pad) \*4. 4

BALLOTS DELIVERED TO THE PRECINCT

Ballots delivered as certified by the clerk (This number is found on the Precinct Certification Form located in your Head Judge Book) 5. 225

Ballot count adjustments from incident log (+/-) (Check your incident log for any differences found when judges counted the number of ballots in each opened package and any other notations that would affect the number of ballots for your precinct) 6. 0

Number of unofficial ballots made (This number will most likely be "0" unless you ran out of official ballots) 7. 0

Number of absentee ballots delivered 8. 0

Total number of ballots delivered to precinct (5+6+7+8 = A) A 225

BALLOTS NOT IN THE BALLOT BOX

Number of spoiled ballots (Number of ballots in the spoiled ballot envelope) \*9. 4

Number of originals for which duplicates made (Number of ballots in the duplicate ballot envelope) \*10. 0

Number of rejected absentees \*11. 0

Number of unused ballots (Count the number of unused ballots at the end of the day, including those ballots in unopened packages plus ballots not used from opened packages) 12. 117

Total number of ballots not in the ballot box (9+10+11+12 = B) B 121

BALLOTS CAST IN THE BALLOT BOX

Number of signatures on electronic roster (This number is the number of Check-ins found on the Summary Report you printed from the poll pad and should equal the Public Count and Total Paper Sheets on the DS200 Results Tape) \*13. 104

Number of accepted regular, military and overseas absentee & mail ballots \*14. 0

Number of accepted federal only absentee ballots \*15. N/A

Number of accepted presidential only absentee ballots \*16. N/A

Total number of ballots in the ballot box (= persons voting) (13+14+15+16 = C) C 104

BALLOTS RETURNED FROM THE PRECINCT

Ballots returned from the precinct (B + C = D) D 225

Difference for auditor/clerk notation on delivery record (A - D = E) (This number should be "0"; if not, re-check your figures. If still not "0" and you are unable to reconcile, contact the Property Tax & Elections Office) E 0

Ballots cast in the ballot box verified by hand count (C - F = 0) (The total number of ballots in the ballot box as verified by hand count) F 104

\_\_\_\_\_  
Election Judge Signature

T. S. [Signature]  
Election Judge Signature

Alison M. Lyman  
PTE Verification



Precinct Summary Statement  
General Election: November 5, 2024

Municipality Northfield Twpshp  Check if AB/DB

Ward - Precinct 2

County Rice

Number of election judges who worked in this precinct  
(Total number of judges for the precinct for the entire day who signed the oath) 1. 14

Number of voting booths in this precinct  
(Total number of standing/sitting booths or other types of voting spaces available in the polling place) 2. 8

REGISTRATION STATISTICS

Number of persons registered at 7 a.m.  
(This number is found on the Precinct Certification Form located in your Head Judge Book) \*3. 497

Number of new registrants on election day  
(This number is found on the Summary Report you printed from the poll pad) \*4. 26

BALLOTS DELIVERED TO THE PRECINCT

Ballots delivered as certified by the clerk  
(This number is found on the Precinct Certification Form located in your Head Judge Book) 5. 625

Ballot count adjustments from incident log (+/-)  
(Check your incident log for any differences found when judges counted the number of ballots in each opened package and any other notations that would affect the number of ballots for your precinct) 6. 0

Number of unofficial ballots made  
(This number will most likely be "0" unless you ran out of official ballots) 7. 0

Number of absentee ballots delivered 8. 0

Total number of ballots delivered to precinct (5+6+7+8 = A) A 625

BALLOTS NOT IN THE BALLOT BOX

Number of spoiled ballots  
(Number of ballots in the spoiled ballot envelope) \*9. 12

Number of originals for which duplicates made  
(Number of ballots in the duplicate ballot envelope) \*10. 0

Number of rejected absentees \*11. 0

Number of unused ballots  
(Count the number of unused ballots at the end of the day, including those ballots in unopened packages plus ballots not used from opened packages) 12. 246

Total number of ballots not in the ballot box (9+10+11+12 = B) B 258

BALLOTS CAST IN THE BALLOT BOX

Number of signatures on electronic roster  
(This number is the number of Check-ins found on the Summary Report you printed from the poll pad and should equal the Public Count and Total Paper Sheets on the DS200 Results Tape) \*13. 367

Number of accepted regular, military and overseas absentee & mail ballots \*14. 0

Number of accepted federal only absentee ballots \*15. N/A

Number of accepted presidential only absentee ballots \*16. N/A

Total number of ballots in the ballot box (= persons voting) (13+14+15+16 = C) C 367

BALLOTS RETURNED FROM THE PRECINCT

Ballots returned from the precinct (B + C = D) D 625

Difference for auditor/clerk notation on delivery record (A - D = E)  
(This number should be "0"; if not, re-check your figures. If still not "0" and you are unable to reconcile, contact the Property Tax & Elections Office) E 0

Ballots cast in the ballot box verified by hand count (C - F = 0)  
(The total number of ballots in the ballot box as verified by hand count) F 367

Miriam M. Lyman  
Election Judge Signature

PL  
Election Judge Signature

AP  
PTE Verification

Precinct Summary Statement  
General Election: November 5, 2024

Municipality Webster  Check if AB/DB  
Ward \_\_\_\_\_ Precinct \_\_\_\_\_  
County Rice

Number of election judges who worked in this precinct 1. 8  
(Total number of judges for the precinct for the entire day who signed the oath)  
Number of voting booths in this precinct 2. 10  
(Total number of standing/sitting booths or other types of voting spaces available in the polling place)

REGISTRATION STATISTICS

Number of persons registered at 7 a.m. \*3. 1386  
(This number is found on the Precinct Certification Form located in your Head Judge Book)  
Number of new registrants on election day \*4. 68  
(This number is found on the Summary Report you printed from the poll pad)

BALLOTS DELIVERED TO THE PRECINCT

Ballots delivered as certified by the clerk 5. 1550  
(This number is found on the Precinct Certification Form located in your Head Judge Book)  
Ballot count adjustments from incident log (+/-) 6. 0  
(Check your incident log for any differences found when judges counted the number of ballots in each opened package and any other notations that would affect the number of ballots for your precinct)  
Number of unofficial ballots made 7. 0  
(This number will most likely be "0" unless you ran out of official ballots)  
Number of absentee ballots delivered 8. 0  
Total number of ballots delivered to precinct (5+6+7+8 = A) A 1550

BALLOTS NOT IN THE BALLOT BOX

Number of spoiled ballots \*9. 11  
(Number of ballots in the spoiled ballot envelope)  
Number of originals for which duplicates made \*10. 0  
(Number of ballots in the duplicate ballot envelope)  
Number of rejected absentees \*11. 0  
Number of unused ballots 12. 555  
(Count the number of unused ballots at the end of the day, including those ballots in unopened packages plus ballots not used from opened packages)  
Total number of ballots not in the ballot box (9+10+11+12 = B) B 566

BALLOTS CAST IN THE BALLOT BOX

Number of signatures on electronic roster \*13. ~~1386~~ 984  
(This number is the number of Check-ins found on the Summary Report you printed from the poll pad and should equal the Public Count and Total Paper Sheets on the DS200 Results Tape)  
Number of accepted regular, military and overseas absentee & mail ballots \*14. 0  
Number of accepted federal only absentee ballots \*15. N/A  
Number of accepted presidential only absentee ballots \*16. N/A  
Total number of ballots in the ballot box (= persons voting) (13+14+15+16 = C) C 984

BALLOTS RETURNED FROM THE PRECINCT

Ballots returned from the precinct (B + C = D) D 1550  
Difference for auditor/clerk notation on delivery record (A - D = E) E 0  
(This number should be "0"; if not, re-check your figures. If still not "0" and you are unable to reconcile, contact the Property Tax & Elections Office)  
Ballots cast in the ballot box verified by hand count (C - F = 0) F 984 <sup>RU</sup>  
(The total number of ballots in the ballot box as verified by hand count)

Ande A. Adley Election Judge Signature      Sheryl E. Melgren Election Judge Signature      JA PTE Verification

\*Entered into ERS

# Precinct Summary Statement

## State General - November 5, 2024

Municipality Dennison City

Ward \_\_\_\_\_ Precinct \_\_\_\_\_ Check if AB  x

County Goodhue County

Number of Election Judges who worked in this precinct \_\_\_\_\_

Number of Voting Booths in this precinct \_\_\_\_\_ (Do not count the Omni Ballot as a voting booth)

**Registration Statistics**

Number of persons registered at 7 a.m. \*1. 118

Number of new registrants on election day \*2. 1 (# of registrations on Poll Pads)

**Ballots delivered to the precinct**

Ballots delivered as certified by the clerk 3. -

Ballot count adjustments from incident log (+/-) 4. \_\_\_\_\_ (ballot packs over/under)

Number of unofficial ballots made 5. 12 (# of photocopies made)

Number of absentee ballots delivered 6. \_\_\_\_\_

Total number of ballots delivered to precinct (3+4+5+6 = A) A -

**Ballots not in the ballot box**

Number of spoiled ballots \*7. \_\_\_\_\_

Number of originals for which duplicates made \*8. \_\_\_\_\_ (Ballots remade by Election Judges)

Number of rejected absentees \*9. \_\_\_\_\_

Number of unused ballots 10. \_\_\_\_\_ (Leftover "unused")

Total number ballots not in the ballot box (7+8+9+10 = B) B -

**Ballots cast in the ballot box**

Number of signatures on roster (preregistered + EDR) \*11. - (# of check-Ins on Poll Pad)

Number of accepted regular, military and overseas absentee ballots \*12. 12

Number of accepted federal only absentee ballots \*13. \_\_\_\_\_

Number of accepted presidential only absentee ballots \*14. \_\_\_\_\_

Total number of ballots in the ballot box (= persons voting) (11+12+13+14 = C) C 12

DS200 Total Paper Sheets

**Ballots returned to Auditor/Clerk**

Ballots returned from the precinct (B + C = D) D 12

Difference for auditor/clerk notation on delivery record (A - D = E) E (12)

# Precinct Summary Statement

## State General - November 5, 2024

Municipality Dennison City

Ward \_\_\_\_\_ Precinct \_\_\_\_\_

Check if AB

County Goodhue County

Number of Election Judges who worked in this precinct 7

Number of Voting Booths in this precinct 3

(Do not count the Omni Ballot as a voting booth)

### Registration Statistics

Number of persons registered at 7 a.m. \*1. 118

Number of new registrants on election day \*2. 9 (# of registrations on Poll Pads)

### Ballots delivered to the precinct

Ballots delivered as certified by the clerk 3. 175

Ballot count adjustments from incident log (+/-) 4. 0 (ballot packs over/under)

Number of unofficial ballots made 5. 0 (# of photocopies made)

Number of absentee ballots delivered 6. 0

Total number of ballots delivered to precinct (3+4+5+6 = A)

A

### Ballots not in the ballot box

Number of spoiled ballots \*7. 2

Number of originals for which duplicates made \*8. 0 (Ballots remade by Election Judges)

Number of rejected absentees \*9. 0

Number of unused ballots 10. 72 (Leftover "unused")

Total number ballots not in the ballot box (7+8+9+10 = B)

B

### Ballots cast in the ballot box

Number of signatures on roster (preregistered + EDR) \*11. 101 (# of check-ins on Poll Pad)

Number of accepted regular, military and overseas absentee ballots \*12. 0

Number of accepted federal only absentee ballots \*13. 0

Number of accepted presidential only absentee ballots \*14. 0

Total number of ballots in the ballot box (= persons voting) (11+12+13+14 = C)

C   
DS200 Total Paper Sheets

### Ballots returned to Auditor/Clerk

Ballots returned from the precinct (B + C = D)

D

Difference for auditor/clerk notation on delivery record (A - D = E)

E

## Precinct Summary Statement State General - November 5, 2024

Municipality Warsaw Township

Ward \_\_\_\_\_ Precinct \_\_\_\_\_

Check if AB  x

County Goodhue County

Number of Election Judges who worked in this precinct \_\_\_\_\_

Number of Voting Booths in this precinct \_\_\_\_\_

(Do not count the Omni Ballot as a voting booth)

**Registration Statistics**

Number of persons registered at 7 a.m. \*1. 480

Number of new registrants on election day \*2. 1 (# of registrations on Poll Pads)

**Ballots delivered to the precinct**

Ballots delivered as certified by the clerk 3. 1

Ballot count adjustments from incident log (+/-) 4. \_\_\_\_\_ (ballot packs over/under)

Number of unofficial ballots made 5. \_\_\_\_\_ (# of photocopies made)

Number of absentee ballots delivered 6. 60

Total number of ballots delivered to precinct (3+4+5+6 = A) A 61

**Ballots not in the ballot box**

Number of spoiled ballots \*7. \_\_\_\_\_

Number of originals for which duplicates made \*8. 1 (Ballots remade by Election Judges)

Number of rejected absentees \*9. 2

Number of unused ballots 10. \_\_\_\_\_ (Leftover "unused")

Total number ballots not in the ballot box (7+8+9+10 = B) B 3

**Ballots cast in the ballot box**

Number of signatures on roster (preregistered + EDR) \*11. - (# of check-Ins on Poll Pad)

Number of accepted regular, military and overseas absentee ballots \*12. 58

Number of accepted federal only absentee ballots \*13. \_\_\_\_\_

Number of accepted presidential only absentee ballots \*14. \_\_\_\_\_

Total number of ballots in the ballot box (= persons voting) (11+12+13+14 = C) C 58

DS200 Total Paper Sheets

**Ballots returned to Auditor/Clerk**

Ballots returned from the precinct (B + C = D) D 61

Difference for auditor/clerk notation on delivery record (A - D = E) E -

# Precinct Summary Statement

## State General - November 5, 2024

Municipality Warsaw Township

Ward \_\_\_\_\_ Precinct \_\_\_\_\_

Check if AB

County Goodhue County

Number of Election Judges who worked in this precinct 9

Number of Voting Booths in this precinct 4

(Do not count the Omni Ballot as a voting booth)

**Registration Statistics**

Number of persons registered at 7 a.m. \*1. 480

Number of new registrants on election day \*2. 10 (# of registrations on Poll Pads)

**Ballots delivered to the precinct**

Ballots delivered as certified by the clerk 3. 600

Ballot count adjustments from incident log (+/-) 4. 0 (ballot packs over/under)

Number of unofficial ballots made 5. 0 (# of photocopies made)

Number of absentee ballots delivered 6. 0

Total number of ballots delivered to precinct (3+4+5+6 = A) A 600

**Ballots not in the ballot box**

Number of spoiled ballots \*7. 4

Number of originals for which duplicates made \*8. 0 (Ballots remade by Election Judges)

Number of rejected absentees \*9. 0

Number of unused ballots 10. 228 (Leftover "unused")

Total number ballots not in the ballot box (7+8+9+10 = B) B 232

**Ballots cast in the ballot box**

Number of signatures on roster (preregistered + EDR) \*11. 369 (# of check-ins on Poll Pad)

Number of accepted regular, military and overseas absentee ballots \*12. 0

Number of accepted federal only absentee ballots \*13. 0

Number of accepted presidential only absentee ballots \*14. 0

Total number of ballots in the ballot box (= persons voting) (11+12+13+14 = C) C 369  
DS200 Total Paper Sheets

**Ballots returned to Auditor/Clerk**

Ballots returned from the precinct (B + C = D) D 601

Difference for auditor/clerk notation on delivery record (A - D = E) E -1

See on incident log →



# Precinct Summary Statement Worksheet

Municipality: Northfield  
Ward/Precinct: W-3 | P-2  
Election:  
Date:

Number of Election Judges who worked this precinct \* 14  
Number of Voting Booths in this precinct \* 12  
*\*entered into ERS stats by Dakota County*

### Registration Statistics:

1. Number of persons registered at 7 a.m.: \*1 990  
2. Number of new registrants on election day (excluding absentee) \*2 19  
*\* entered into ERS by Dakota County*

### Ballots delivered to the precinct:

3. Ballots delivered as certified by the clerk 3 1050 950  
4. Ballot count adjustments from Incident Log (+/-) 4 8  
5. Number of unofficial ballots made (due to ballot shortage) 5 8  
A Total number of ballots delivered to precinct (3 +/- 4 + 5 = A) A 960

### Ballots not in the ballot box:

6. Number of spoiled ballots \*6 6  
7. Number of ballots used to test the Accessible Device 7 1  
8. Number of originals for which duplicates were made \*8 0  
9. Number of unused ballots 9 \_\_\_\_\_  
a. Number of unopened ballot packages = 9 x 50 = 450  
b. Number of opened or "loose" ballots = 15  
(a + b = 9)  
B Total number of ballots not in the ballot box (6 + 7 + 8 + 9 = B) B 475  
*\* entered into ERS by Dakota County*

### Ballots cast in the ballot box (Number of Persons Voting):

10. Number of signatures on roster DO NOT COUNT "A.B." (preregistered plus new registrants) \*10 475  
C Total number of ballots in the ballot box (10 and C must match) \*C 475  
*\* entered into ERS by Dakota County*

### Ballots returned to Clerk or Auditor:

D Ballots returned from the precinct (B + C = D) D 950  
E Ballot quantity difference (A - D = E) E 0

Number of excess ballots: 0 (to be filled out by clerk)

We, the undersigned judges, hereby certify: that the national flag of the United States was displayed on a suitable staff during voting hours; that the number of ballots on this summary statement correctly show the number of votes cast for each candidate; that the order of the offices and questions to be voted on and the candidates' names on the ballots was the same on the zero tape and the sample ballot; the number of ballots entered on this summary statement correctly show the number of ballots in the transfer kits; that the ballots have been counted and agree with the number of names as show on the summary statement or that any discrepancy has been noted on the incident report; that all ballots requiring duplication were duplicated and are in the proper envelope; that the number of write-in votes for each office has been properly recorded, if this process was done at the polling place; that all ballots used in the election and all ballots that have been duplicated have been placed in the transfer case and the case was securely sealed with an official seal in such a manner as to render it impossible to open the case without breaking the seal.

Mary K. Linn  
Election Judge Signature

Connie Rimpila  
Election Judge Signature

Mark J. E.  
Election Judge Signature

Copy #1 - Dakota County Envelope

Copy #2 - Municipal Envelope

Copy #3 - School District Envelope



# Precinct Summary Statement Worksheet

Municipality: Eureka Township  
Ward/Precinct: Eureka  
Election: General  
Date: Nov 5, 2024

Number of Election Judges who worked this precinct \* 13

Number of Voting Booths in this precinct \* 11  
*\*entered into ERS stats by Dakota County*

### Registration Statistics:

- 1. Number of persons registered at 7 a.m.: \*1 1086
  - 2. Number of new registrants on election day (excluding absentee) \*2 62
- \* entered into ERS by Dakota County*

### Ballots delivered to the precinct:

- 3. Ballots delivered as certified by the clerk 3 1150
  - 4. Ballot count adjustments from Incident Log (+/-) 4 0
  - 5. Number of unofficial ballots made (due to ballot shortage) 5 0
- A Total number of ballots delivered to precinct (3 +/- 4 + 5 = A) A 1150

### Ballots not in the ballot box:

- 6. Number of spoiled ballots \*6 13
  - 7. Number of ballots used to test the Accessible Device 7 3
  - 8. Number of originals for which duplicates were made \*8 0
  - 9. Number of unused ballots 9 290
    - a. Number of unopened ballot packages = 200 x 50 = 150 *HAVE 200*
    - b. Number of opened or "loose" ballots = 90 *EAL*
- B Total number of ballots not in the ballot box (6 + 7 + 8 + 9 = B) B 306
- \* entered into ERS by Dakota County*

### Ballots cast in the ballot box (Number of Persons Voting):

- 10. Number of signatures on roster DO NOT COUNT "A.B." \*10 844  
(preregistered plus new registrants)
- C Total number of ballots in the ballot box (10 and C must match) \*C 844
- \* entered into ERS by Dakota County*

### Ballots returned to Clerk or Auditor:

- D Ballots returned from the precinct (B + C = D) D 1150
- E Ballot quantity difference (A - D = E) E 0

Number of excess ballots: \_\_\_\_\_ (to be filled out by clerk)

We, the undersigned judges, hereby certify: that the national flag of the United States was displayed on a suitable staff during voting hours; that the number of ballots on this summary statement correctly show the number of votes cast for each candidate; that the order of the offices and questions to be voted on and the candidates' names on the ballots was the same on the zero tape and the sample ballot; the number of ballots entered on this summary statement correctly show the number of ballots in the transfer kits; that the ballots have been counted and agree with the number of names as show on the summary statement or that any discrepancy has been noted on the incident report; that all ballots requiring duplication were duplicated and are in the proper envelope; that the number of write-in votes for each office has been properly recorded, if this process was done at the polling place; that all ballots used in the election and all ballots that have been duplicated have been placed in the transfer case and the case was securely sealed with an official seal in such a manner as to render it impossible to open the case without breaking the seal.

Elizabeth G. Elms  
Election Judge Signature

[Signature]  
Election Judge Signature

[Signature]  
Election Judge Signature



Appendix J: Precinct Summary Statement

| <span style="font-weight: bold; font-size: 1.2em;">Precinct<br/>Summary Statement Worksheet</span>                               |                              |                                    |                         |
|--|------------------------------|------------------------------------|-------------------------|
| <b>Municipality:</b><br>Castle Rock  | <b>Ward / Precinct:</b><br>1 | <b>Election Type:</b><br>General   | <b>Date:</b><br>11-5-24 |
| Number of Election Judges who worked this precinct   |                              | * 9                                |                         |
| Number of Voting Booths in this precinct<br><small>*entered into ERS stats by Dakota County</small>                              |                              | * 13                               |                         |
| <b>Registration Statistics:</b>  |                              |                                    |                         |
| 1. Number of persons registered at 7 a.m.:   |                              | *1 1015                            |                         |
| 2. Number of new registrants on election day (excluding absentee)<br><small>* entered into ERS by Dakota County</small>          |                              | *2 38                              |                         |
| <b>Ballots delivered to the precinct:</b>  |                              |                                    |                         |
| 3. Ballots delivered as certified by the clerk   |                              | 3 1050                             |                         |
| 4. Ballot count adjustments from Incident Log (+/-)  |                              | 4 0                                |                         |
| 5. Number of unofficial ballots made (due to ballot shortage)  |                              | 5 0                                |                         |
| A Total number of ballots delivered to precinct (3 +/- 4 + 5 = A)  |                              |                                    | A 1050                  |
| <b>Ballots not in the ballot box:</b>  |                              |                                    |                         |
| 6. Number of spoiled ballots   |                              | *6 5                               |                         |
| 7. Number of ballots used to test the Accessible Device  |                              | 7 1                                |                         |
| 8. Number of originals for which duplicates were made  |                              | *8 0                               |                         |
| 9. Number of unused ballots  |                              | 9 270                              |                         |
| a. Number of unopened ballot packages = 5 x 50 = 250   |                              |                                    |                         |
| b. Number of opened or "loose" ballots = 20<br>(a + b = 9)   |                              |                                    |                         |
| B Total number of ballots <u>not</u> in the ballot box (6 + 7 + 8 + 9 = B)<br><small>* entered into ERS by Dakota County</small> |                              |                                    | B 276                   |
| <b>Ballots cast in the ballot box (Number of Persons Voting):</b>  |                              |                                    |                         |
| 10. Number of signatures on roster DO NOT COUNT "A.B."<br>(pre-registered plus new registrants)                                  |                              | *10 774                            |                         |
| C Total number of ballots in the ballot box (10 and C <u>must</u> match)<br><small>* entered into ERS by Dakota County</small>   |                              |                                    | *C 774                  |
| <b>Ballots returned to Clerk or Auditor:</b>   |                              |                                    |                         |
| D Ballots returned from the precinct (B + C = D)   |                              |                                    | D 1050                  |
| E Ballot quantity difference (A - D = E)   |                              |                                    | E 0                     |
| Number of excess ballots, if any (To be filled out by Clerk)   |                              |                                    | 0                       |
| Signatures of Election Judges  |                              | Signatures of Election Judges      |                         |
|  |                              |                                    |                         |
| Copy #1 - Dakota County Envelope   |                              | Copy #3 - School District Envelope |                         |

Rev. 05.12.2014



# Precinct Summary Statement Worksheet

Municipality: Greenvale Twp  
Ward/Precinct:  
Election:  
Date:

Number of Election Judges who worked this precinct \* 20  
Number of Voting Booths in this precinct \* 8  
*\*entered into ERS stats by Dakota County*

### Registration Statistics:

1. Number of persons registered at 7 a.m.: \*1 616  
2. Number of new registrants on election day (excluding absentee) \*2 27  
*\* entered into ERS by Dakota County*

### Ballots delivered to the precinct:

3. Ballots delivered as certified by the clerk 3 650  
4. Ballot count adjustments from Incident Log (+/-) 4 +1  
5. Number of unofficial ballots made (due to ballot shortage) 5 0  
A Total number of ballots delivered to precinct (3 +/- 4 + 5 = A) A 651

### Ballots not in the ballot box:

6. Number of spoiled ballots \*6 5  
7. Number of ballots used to test the Accessible Device 7 1  
8. Number of originals for which duplicates were made \*8 0  
9. Number of unused ballots 9 \_\_\_\_\_  
a. Number of unopened ballot packages = 2 x 50 = 100  
b. Number of opened or "loose" ballots = 50  
(a + b = 9)  
B Total number of ballots not in the ballot box (6 + 7 + 8 + 9 = B) B 156  
*\* entered into ERS by Dakota County*

### Ballots cast in the ballot box (Number of Persons Voting):

10. Number of signatures on roster DO NOT COUNT "A.B." \*10 494  
(preregistered plus new registrants)  
C Total number of ballots in the ballot box (10 and C must match) \*C 494  
*\* entered into ERS by Dakota County*

### Ballots returned to Clerk or Auditor:

D Ballots returned from the precinct (B + C = D) D 650  
E Ballot quantity difference (A - D = E) E 1

Number of excess ballots: \_\_\_\_\_ (to be filled out by clerk)

We, the undersigned judges, herby certify: that the national flag of the United States was displayed on a suitable staff during voting hours; that the number of ballots on this summary statement correctly show the number of votes cast for each candidate; that the order of the offices and questions to be voted on and the candidates' names on the ballots was the same on the zero tape and the sample ballot; the number of ballots entered on this summary statement correctly show the number of ballots in the transfer kits; that the ballots have been counted and agree with the number of names as show on the summary statement or that any discrepancy has been noted on the incident report; that all ballots requiring duplication were duplicated and are in the proper envelope; that the number of write-in votes for each office has been properly recorded, if this process was done at the polling place; that all ballots used in the election and all ballots that have been duplicated have been placed in the transfer case and the case was securely sealed with an official seal in such a manner as to render it impossible to open the case without breaking the seal.

Susan M. Bradman  
Election Judge Signature

Mark [Signature]  
Election Judge Signature

[Signature]  
Election Judge Signature



# Precinct Summary Statement Worksheet

Municipality: Sciota Twp  
Ward/Precinct:  
Election:  
Date:

Number of Election Judges who worked this precinct \* 10  
Number of Voting Booths in this precinct \* 4  
*\*entered into ERS stats by Dakota County*

### Registration Statistics:

1. Number of persons registered at 7 a.m.: \*1 343  
2. Number of new registrants on election day (excluding absentee) \*2 19  
*\* entered into ERS by Dakota County*

### Ballots delivered to the precinct:

3. Ballots delivered as certified by the clerk 3 400  
4. Ballot count adjustments from Incident Log (+/-) 4 0  
5. Number of unofficial ballots made (due to ballot shortage) 5 0  
A Total number of ballots delivered to precinct (3 +/- 4 + 5 = A) A 400

### Ballots not in the ballot box:

6. Number of spoiled ballots \*6 6  
7. Number of ballots used to test the Accessible Device 7 2  
8. Number of originals for which duplicates were made \*8 0  
9. Number of unused ballots 9 127  
a. Number of unopened ballot packages = 1 x 50 = 50  
b. Number of opened or "loose" ballots = 77  
(a + b = 9)  
B Total number of ballots not in the ballot box (6 + 7 + 8 + 9 = B) B 135  
*\* entered into ERS by Dakota County*

### Ballots cast in the ballot box (Number of Persons Voting):

10. Number of signatures on roster DO NOT COUNT "A.B." \*10 265  
(preregistered plus new registrants)  
C Total number of ballots in the ballot box (10 and C must match) \*C 265  
*\* entered into ERS by Dakota County*

### Ballots returned to Clerk or Auditor:

D Ballots returned from the precinct (B + C = D) D 400  
E Ballot quantity difference (A - D = E) E 0

Number of excess ballots: 0 (to be filled out by clerk)

We, the undersigned judges, hereby certify: that the national flag of the United States was displayed on a suitable staff during voting hours; that the number of ballots on this summary statement correctly show the number of votes cast for each candidate; that the order of the offices and questions to be voted on and the candidates' names on the ballots was the same on the zero tape and the sample ballot; the number of ballots entered on this summary statement correctly show the number of ballots in the transfer kits; that the ballots have been counted and agree with the number of names as show on the summary statement or that any discrepancy has been noted on the incident report; that all ballots requiring duplication were duplicated and are in the proper envelope; that the number of write-in votes for each office has been properly recorded, if this process was done at the polling place; that all ballots used in the election and all ballots that have been duplicated have been placed in the transfer case and the case was securely sealed with an official seal in such a manner as to render it impossible to open the case without breaking the seal.

[Signature]  
Election Judge Signature

[Signature]  
Election Judge Signature

[Signature]  
Election Judge Signature

Copy #1 - Dakota County Envelope

Copy #2 - Municipal Envelope

Copy #3 - School District Envelope



# Precinct Summary Statement Worksheet

Municipality: Waterford Twp  
Ward/Precinct:  
Election:  
Date:

Number of Election Judges who worked this precinct

\* 11

Number of Voting Booths in this precinct

\* 4

\*entered into ERS stats by Dakota County

### Registration Statistics:

- 1. Number of persons registered at 7 a.m.:
- 2. Number of new registrants on election day (excluding absentee)

\*1 395  
\*2 27

\* entered into ERS by Dakota County

### Ballots delivered to the precinct:

- 3. Ballots delivered as certified by the clerk
- 4. Ballot count adjustments from Incident Log (+/-)
- 5. Number of unofficial ballots made (due to ballot shortage)
- A Total number of ballots delivered to precinct (3 +/- 4 + 5 = A)

3 450  
4 0  
5 0

A 450

### Ballots not in the ballot box:

- 6. Number of spoiled ballots
- 7. Number of ballots used to test the Accessible Device
- 8. Number of originals for which duplicates were made
- 9. Number of unused ballots
  - a. Number of unopened ballot packages = 2 x 50 = 100
  - b. Number of opened or "loose" ballots = 39
  - (a + b = 9)
- B Total number of ballots not in the ballot box (6 + 7 + 8 + 9 = B)

\*6 6  
\*7 2  
\*8 0  
\*9 139

B 147

\* entered into ERS by Dakota County

### Ballots cast in the ballot box (Number of Persons Voting):

- 10. Number of signatures on roster DO NOT COUNT "A.B." (preregistered plus new registrants)
- C Total number of ballots in the ballot box (10 and C must match)

\*10 303

\*C 303

\* entered into ERS by Dakota County

### Ballots returned to Clerk or Auditor:

- D Ballots returned from the precinct (B + C = D)
- E Ballot quantity difference (A - D = E)

D 450

E 0

Number of excess ballots: \_\_\_\_\_ (to be filled out by clerk)

We, the undersigned judges, hereby certify: that the national flag of the United States was displayed on a suitable staff during voting hours; that the number of ballots on this summary statement correctly show the number of votes cast for each candidate; that the order of the offices and questions to be voted on and the candidates' names on the ballots was the same on the zero tape and the sample ballot; the number of ballots entered on this summary statement correctly show the number of ballots in the transfer kits; that the ballots have been counted and agree with the number of names as show on the summary statement or that any discrepancy has been noted on the incident report; that all ballots requiring duplication were duplicated and are in the proper envelope; that the number of write-in votes for each office has been properly recorded, if this process was done at the polling place; that all ballots used in the election and all ballots that have been duplicated have been placed in the transfer case and the case was securely sealed with an official seal in such a manner as to render it impossible to open the case without breaking the seal.

Election Judge Signature

Election Judge Signature

\_\_\_\_\_  
Election Judge Signature

**RESOLUTION AUTHORIZING ISSUANCE OF CERTIFICATES  
OF ELECTION AND DIRECTING SCHOOL DISTRICT CLERK  
TO PERFORM OTHER ELECTION RELATED DUTIES**

Independent School District No. 659  
201 Orchard Street South  
Northfield, MN 55057

WHEREAS, the board has canvassed the general election for school board members held on November 5, 2024,

NOW THEREFORE, BE IT RESOLVED by the School Board of Independent School District No. 659, State of Minnesota, as follows:

1. The chair and clerk are hereby authorized to execute certificates of election on behalf of the school board of Independent School District No. 659 to the following candidates:

Corey Butler, Claudia Gonzalez-George, Maggie Epstein, and Amy Goerwitz

who have received a sufficiently large number of votes to be elected to fill vacancies on the board caused by expiration of term on the first Monday in January next following the election, based on the results of the canvass.

2. The certificate of election shall be in substantially the form attached hereto.

3. After the time for contesting the election has passed and the candidate has filed all campaign financial reports required by Minnesota Statutes, Chapter 211A, the clerk of the school board is hereby directed to deliver the certificates to the persons entitled thereto personally or by certified mail.

4. The clerk is hereby directed to enclose with the certificate a form of acceptance of office and oath of office in substantially the form attached hereto.

**CERTIFICATE OF ELECTION  
FULL 4 YEAR TERM**

This is to certify as follows:

1. The School Board of Independent School District No. 659 on November 12, 2024, canvassed the general election of school board members held on November 5, 2024.

2. **XXXX** received the (largest/second largest/third largest/fourth largest) number of votes cast for the office of school board member of Independent School District No. 659 for a full four year term.

3. There are four (4), full four-year term vacancies on the board caused by expiration of term on the first Monday in January next following the election.

4. Therefore, **XXXX** is elected to the office of school board member of Independent School District No. 659 for a full four-year term beginning the first Monday in January, 2025 and expiring the first Monday in January, 2029.

By authority of the School Board of Independent School District No. 659, pursuant to resolution dated November 12, 2024.

Dated: November 12, 2024

\_\_\_\_\_  
Claudia Gonzalez-George, School Board Chair

\_\_\_\_\_  
Amy Goerwitz, School Board Clerk

**ACCEPTANCE OF OFFICE  
AND OATH OF OFFICE**

Independent School District No. 659  
201 Orchard Street  
Northfield, MN 55057

TO: Corey Butler, Claudia Gonzalez-George, Maggie Epstein, and Amy Goerwitz

The following acceptance and oath of office must be filed with the school district clerk within 30 days of the date of mailing or personal service of the certificate of election.

**ACCEPTANCE OF OFFICE**

I hereby accept the office of school board member of Independent School District No. 659 for a term beginning the first Monday in January, 2025 and expiring the first Monday in January, 2029.

Date: \_\_\_\_\_ Signature \_\_\_\_\_

STATE OF MINNESOTA )  
COUNTY OF RICE )

The foregoing instrument was acknowledged before me this \_\_\_ day of \_\_\_\_\_, 2024 by \_\_\_\_\_.

Notary Public

**OATH OF OFFICE**

I swear/affirm that I will support the Constitution of the United States and of this state, and that I will discharge faithfully the duties of the office of school board member of Independent School District No. 659 to the best of my judgment and ability.

Date: \_\_\_\_\_ Signature \_\_\_\_\_

STATE OF MINNESOTA )  
COUNTY OF RICE )

The foregoing instrument was acknowledged before me this \_\_\_ day of \_\_\_\_\_, 2024 by \_\_\_\_\_.

Notary Public

RESOLUTION CANVASSING RETURNS OF SPECIAL ELECTION CERTIFICATION OF  
MINUTES RELATING TO SPECIAL ELECTION

Issuer: Independent School District No. 659 (Northfield Public Schools), Minnesota

Governing Body: School Board

Kind, date, time and place of meeting: A regular meeting held on November 12, 2024, at  
6:00 p.m. in the Northfield School District Office Boardroom.

Members present:

Members absent:

Documents attached:

Minutes of said meeting (including):

RESOLUTION RELATING TO CANVASSING RETURNS OF SPECIAL ELECTION

I, the undersigned, being the duly qualified and acting recording officer of the public corporation referred to in the title of this certificate, certify that the documents attached hereto, as described above, have been carefully compared with the original records of said corporation in my legal custody, from which they have been transcribed; that said documents are a correct and complete transcript of the minutes of a meeting of the governing body of said corporation, and correct and complete copies of all resolutions and other actions taken and of all documents approved by the governing body at said meeting; and that said meeting was duly held by the governing body at the time and place and was attended throughout by the members indicated above, pursuant to call and notice of such meeting given as required by law.

WITNESS my hand officially as such recording officer on November 12, 2024.

---

School District Clerk



The Clerk presented affidavits showing filing, publishing and posting of notice, in accordance with the resolution adopted June 10, 2024, of the special election held November 5, 2024, to vote on the questions of (i) issuing general obligation bonds of the School District in an aggregate amount not to exceed \$95,380,000, (ii) issuing general obligation bonds of the School District in an aggregate amount not to exceed \$18,725,000; and (iii) issuing general obligation bonds of the School District in an aggregate amount not to exceed \$6,975,000. The Clerk also presented the Official Returns and Summary Statements of Judges. The affidavits and the Official Returns and Summary Statements of Judges were duly examined, approved and ordered placed on file in the office of the Clerk.

Member \_\_\_\_\_ introduced the following resolution and moved its adoption, which motion was seconded by Member \_\_\_\_\_:

**RESOLUTION RELATING TO CANVASSING RETURNS OF SPECIAL ELECTION**

BE IT RESOLVED by the School Board of Independent School District No. 659 (Northfield Public Schools), Minnesota that the special election held in and for the School District on November 5, 2024, was in all respects duly and legally called and held, the returns thereof have been duly canvassed, and the votes cast at the special election for and against the questions submitted to the electors were as follows:

**School District Question 1  
Approval of School Building Bonds**

- YES** Shall the board of Independent School District No. 659 (Northfield Public Schools), Minnesota be authorized to issue general obligation school building bonds in an amount not to exceed \$95,380,000 for acquisition and betterment of school sites and facilities including, but not limited to, replacing a portion of the high school building with new construction, renovations, improvements, and upgrades to the high school building, facilities, site, and systems, and purchasing equipment and furnishings?
- NO**

**BY VOTING “YES” ON THIS BALLOT QUESTION, YOU ARE VOTING FOR A PROPERTY TAX INCREASE**

| Votes<br><u>YES</u>  | Votes<br><u>NO</u>  | Spoiled, Defective or<br><u>Blank Ballots</u> | TOTAL<br><u>VOTES</u> |
|----------------------|---------------------|---|-----------------------|
| <b><u>10,067</u></b> | <b><u>6,855</u></b> | (see attached)*                               | _____**               |

*\*note that the attached provides this information at the precinct level; due to split precincts, this information is not isolated for the School District.*

*\*\*note that this total includes only the YES and NO votes as those are the only School District-only votes that can be identified.*

The ballot question, having received the approval of a majority of the votes cast, is hereby declared to have carried.

**School District Question 2  
Approval of School Building Bonds**

- YES If School District Question 1 above is approved, shall the board of
- NO Independent School District No. 659 (Northfield Public Schools), Minnesota be authorized to issue general obligation school building bonds in an amount not to exceed \$18,725,000 for acquisition and betterment of school sites and facilities including, but not limited to, the construction of an expanded gymnasium at the high school?

**BY VOTING “YES” ON THIS BALLOT QUESTION, YOU ARE VOTING FOR A PROPERTY TAX INCREASE**

| Votes<br><u>YES</u> | Votes<br><u>NO</u>  | Spoiled, Defective or<br><u>Blank Ballots</u> | TOTAL<br><u>VOTES</u> |
|---------------------|---------------------|---|-----------------------|
| <b><u>8,991</u></b> | <b><u>7,767</u></b> | (see attached)*                               | _____**               |

*\*note that the attached provides this information at the precinct level; due to split precincts, this information is not isolated for the School District.*

*\*\*note that this total includes only the YES and NO votes as those are the only School District-only votes that can be identified.*

The ballot question, having received the approval of a majority of the votes cast, is hereby declared to have carried.

**School District Question 3  
Approval of School Building Bonds**

- YES If School District Question 1 and School District Question 2 above are
- NO approved, shall the board of Independent School District No. 659 (Northfield Public Schools), Minnesota be authorized to issue general obligation school building bonds in an amount not to exceed \$6,975,000 for acquisition and betterment of school sites and facilities including, but not limited to, the construction and installation of a geothermal heating, ventilation, and air conditioning system at the high school?

**BY VOTING “YES” ON THIS BALLOT QUESTION, YOU ARE VOTING FOR A PROPERTY TAX INCREASE**

| <u>Votes</u><br><u>YES</u> | <u>Votes</u><br><u>NO</u> | <u>Spoiled, Defective or</u><br><u>Blank Ballots</u> | <u>TOTAL</u><br><u>VOTES</u> |
|----------------------------|---------------------------|--|------------------------------|
| <b><u>9,445</u></b>        | <b><u>7,290</u></b>       | (see attached)*                                      | _____**                      |

*\*note that the attached provides this information at the precinct level; due to split precincts, this information is not isolated for the School District.*

*\*\*note that this total includes only the YES and NO votes as those are the only School District-only votes that can be identified.*

The ballot question, having received the approval of a majority of the votes cast, is hereby declared to have carried.

Pursuant to Minnesota Statutes, Section 205A.07, Subdivision 3a, the Clerk is hereby instructed to notify the Commissioner of Education of the results of the special election and to provide the certified vote totals for each ballot question in written form within 15 days after the results have been certified by the Board.

Upon vote being taken thereon, the following voted in favor thereof:

and the following voted against the same:

whereupon the resolution was declared duly passed and adopted and was signed by the Chairperson and attested by the Clerk.

\_\_\_\_\_  
Claudia Gonzalez-George, Chairperson

Attest: \_\_\_\_\_  
Amy Goerwitz, School District Clerk