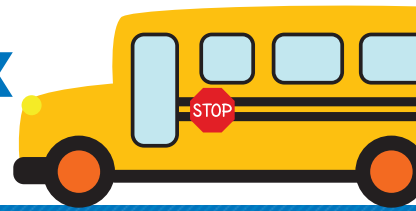




NORTHFIELD PUBLIC SCHOOLS

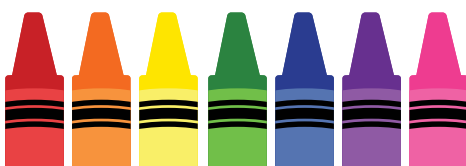
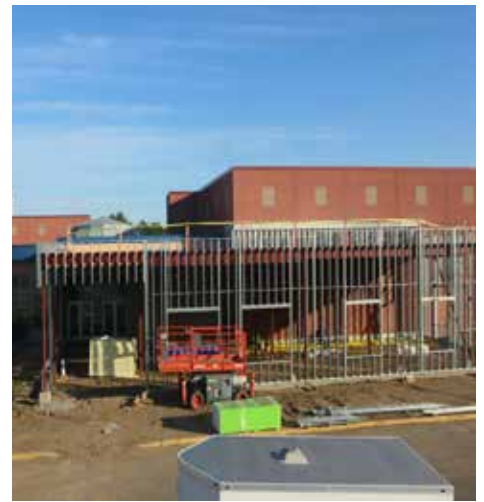
 Knutson Construction



IN THE LOOP

BRIDGEWATER ELEMENTARY

Friday, August 9, 2019



FUN FACT OF THE WEEK

The steel studs we are using to frame the exterior of the new addition can hold over 4,000 pounds of downforce per stud!

PROJECT FACTS

- This project will include a 4,000 sf secure entrance/ office space addition with the existing office space renovated to accommodate additional instructional space.
- The new addition will consist of a secured entrance, health room, reception, and office space.

OxBlue Webcam:

<https://app.oxblue.com/open/Knutson/Bridgewater>

Project Milestones:

- 8.9.19 – Exterior framing to be completed with roofing to follow
- 8.16.19 - Roof framing and core walls to be completed

Photo Description:

- Left - Knutson removing EFIS on the exterior of existing building in preparation for roof framing
- Middle - Exterior framing starting
- Right - Exterior framing completed

Contacts

Josh Cooper
Sr. Project Manager
Knutson Construction
507.206.2522

Tony Haga
Asst. Project Manager
Knutson Construction
507.206.2530

Todd Graner
Sr. Superintendent
Knutson Construction
507.208.0774

Barry Wright
Superintendent
Knutson Construction
507.206.2526