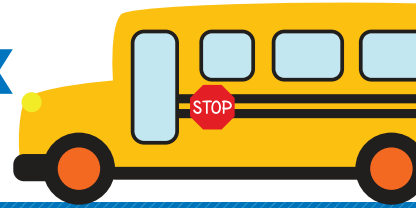




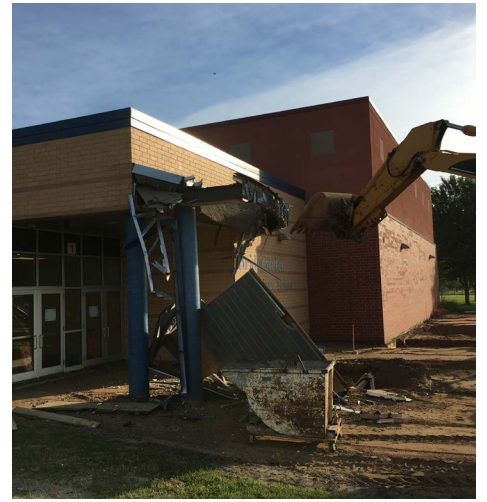
NORTHFIELD PUBLIC SCHOOLS

 Knutson Construction



IN THE LOOP

Wednesday, July 17, 2019



FUN FACT OF THE WEEK

It takes over 1,000 PSI to push concrete through a concrete pump like the one Knutson used

PROJECT FACTS

- This project will include a 4,000 square foot secure entrance/ office space addition with the existing office space renovated to accommodate additional instructional space.
- The new addition will consist of a secured entrance, health room, reception, and office space.

Project Milestones:

- July 12th – Foundation walls complete
- August 8th – Roofing begins
- October 21st – Owner Move-in

Photo Description:

- Left - Footing Formwork and Rebar
- Middle - Pouring Foundation Walls
- Right - Demolition of Existing Canopy

Contacts

Josh Cooper
Sr. Project Manager
Knutson Construction
507.206.2522

Tony Haga
Asst. Project Manager
Knutson Construction
507.206.2530

Todd Graner
Sr. Superintendent
Knutson Construction
507.208.0774

Barry Wright
Superintendent
Knutson Construction
507.206.2526