

NORTHFIELD PUBLIC SCHOOLS
Office of the Superintendent
Memorandum

TO: Board of Education
FROM: Matt Hillmann Ed.D., Superintendent
RE: Table File Items for August 12, 2019, Regular School Board Meeting

V. Items for Discussion and Reports

A. Construction Presentation

Attached is the Design Development Submittal for Sibley Elementary School Addition and Renovation.

VI. Consent Agenda

G. Personnel Items

a) Appointments

24. Theresa Bauman, .5 FTE Internal Reading Coach with the District, beginning 08/26/2019; MA, Step 9
25. Tabatha Lagro, Special Ed EA-PCA for 6.75 hours/day and General Ed EA for .50 hours/day at Sibley, beginning 08/26/2019; Special Ed Step 1-\$15.93/hr. Gen Ed Step 1-\$15.34/hr.

b) Increase/Decrease/Change in Assignment

32. Stacie Banks, 1.0 FTE Early Childhood SPED Teacher at Longfellow, change to 1.0 FTE Early Ventures Teacher at Longfellow, effective 08/26/2019; Step 6
33. Kiwi Bielenberg, Girls Soccer Coach Level J at the Middle School, change to Girls Soccer Coach Level H at the Middle School, effective 08/26/2019; Level H, Step 7
34. Erik Burton, Teacher at the High School, add Football Coach at the Middle School, effective 08/19/2019; Level O- Hourly \$18.00/hr.
35. Ryan Driscoll, Assistant Boys Basketball Coach at the High School, change to Head Boys Basketball Coach at the High School, effective 08/17/2019; Level A, Step 1
36. Makenzie Mathews, EA at Longfellow, change to 1.0 FTE ECSE Teacher at Longfellow, effective 07/26/2019-06/10/2020. BA, Step 1

c) Leave of Absence

d) Retirements/Resignations/Terminations

15. Tyler Faust, Wrestling Coach at the Middle School, resignation effective 06/03/2019.
16. Melissa Reuvers, Special Ed EA at Bridgewater, resignation effective 08/11/2019.

** Conditional offers of employment are subject to successful completion of a criminal background check and Prewrite screening (if applicable).*



INDEPENDENT SCHOOL DISTRICT 659
SIBLEY ELEMENTARY SCHOOL ADDITION AND RENOVATION
August 12, 2019



DESIGN DEVELOPMENT SUBMITTAL

**SIBLEY ELEMENTARY SCHOOL
ADDITION AND RENOVATION**

**INDEPENDENT SCHOOL
DISTRICT #659**

**NORTHFIELD, MN
AUGUST 12, 2019**



TABLE OF CONTENTS

Page

Introduction	01
Core Planning Members	02
Design Criteria	03
Program	04
Site Plan	05
Overall Plan	06
Renovation Plan	07
Addition Plan	08
Schedule	09



Introduction

Wold Architects and Engineers is pleased to submit to the Board of Education of Independent School District #659 the Design Development Submittal for Sibley Elementary School Renovation and Addition. We wish to thank the Core Planning Group and the School District's Administration and Staff for the exhaustive efforts in providing the Design Team with the information necessary to advance to this state of development in a timely fashion.

Upon review by the Board of this project, the Design Team will continue with the Construction Documents Phase. Thank you for your consideration of this Design Development presentation.

A handwritten signature in black ink, appearing to read "Vaughn Dierks", written over a horizontal line.

Vaughn Dierks // AIA, LEED-AP
Partner
WOLD ARCHITECTS AND ENGINEERS

A handwritten signature in black ink, appearing to read "Sal Bagley", written over a horizontal line.

Sal Bagley // AIA, LEED-AP BD + C
Associate
WOLD ARCHITECTS AND ENGINEERS



CORE PLANNING GROUP MEMBERS

- Stephany Stromme
- Lori Malechae
- Julie Pritchard
- Dan Warner
- Dorothy Cohan
- Stephanie Mahal
- Karleen Sherman
- Peter McGorry
- Matt Hillmann
- Scott Sannes
- Ann Hehr
- Mary Kate Maney
- Amy Goerwitz
- Jim Kluseth
- Jane Ehlers
- Pasha Quaas
- Vic Dreier
- Sean Simonson
- Valori Mertesdorf



DESIGN CRITERIA

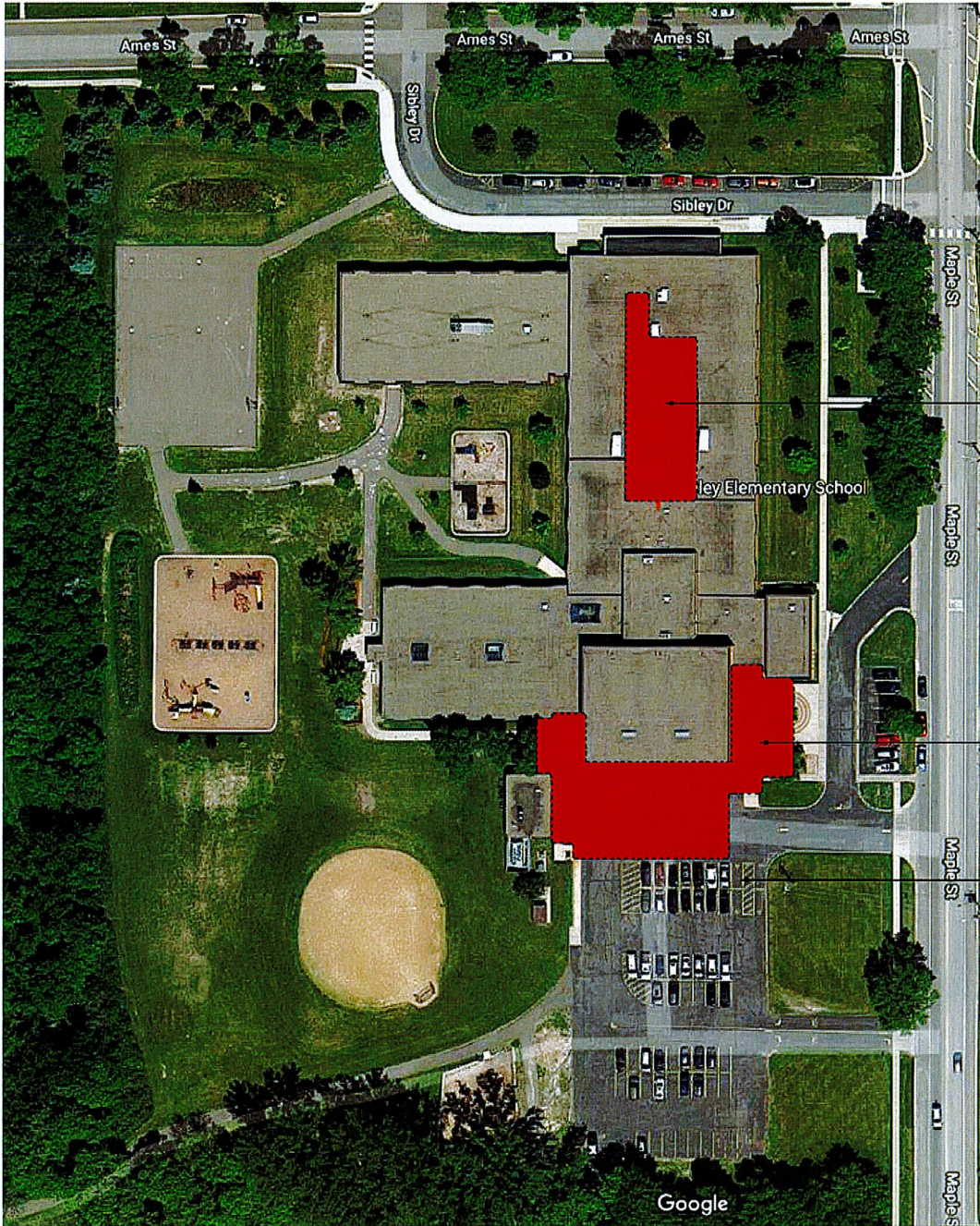
- The cafeteria should be flexible, supporting performance and learning. Accomodate 220 students each lunch period.
- Specialist spaces, such as the gymnasium and music classrooms, should be adjacent to one another for scheduling and acoustic reasons.
- The new music room should be located near the existing music room; this room should be accessible before/after school.
- There should be acoustic control, especially in the cafeteria and music.
- The media center should function as a student space, and will have adjacent small group workspaces, a separate storage room, and media teaching space.
- The flex lab and media center should be next to one another.
- Additional SpED classrooms should be close to the existing SpED classrooms, if not adjacent. The rooms should provide adequate storage.
- SpED classrooms should support small group activities and confidential conversations.
- The speech and ESL spaces should accommodate small group activities, and be acoustically separate from loud active spaces i.e. gym and music.
- The building should support safe exiting and bus flow for students.

GUIDING PRINCIPLES

- The building should meet the needs of today while providing for future flexibility.
- The building should be safe and secure while being warm and welcoming for students, staff and visitors.
- The building addition and renovation should provide opportunities for natural daylight.
- The media center should serve as the heart of the building while being separate from circulation.
- The design should support before/after school functions. This may include: flex lab, music, gym, and cafeteria.



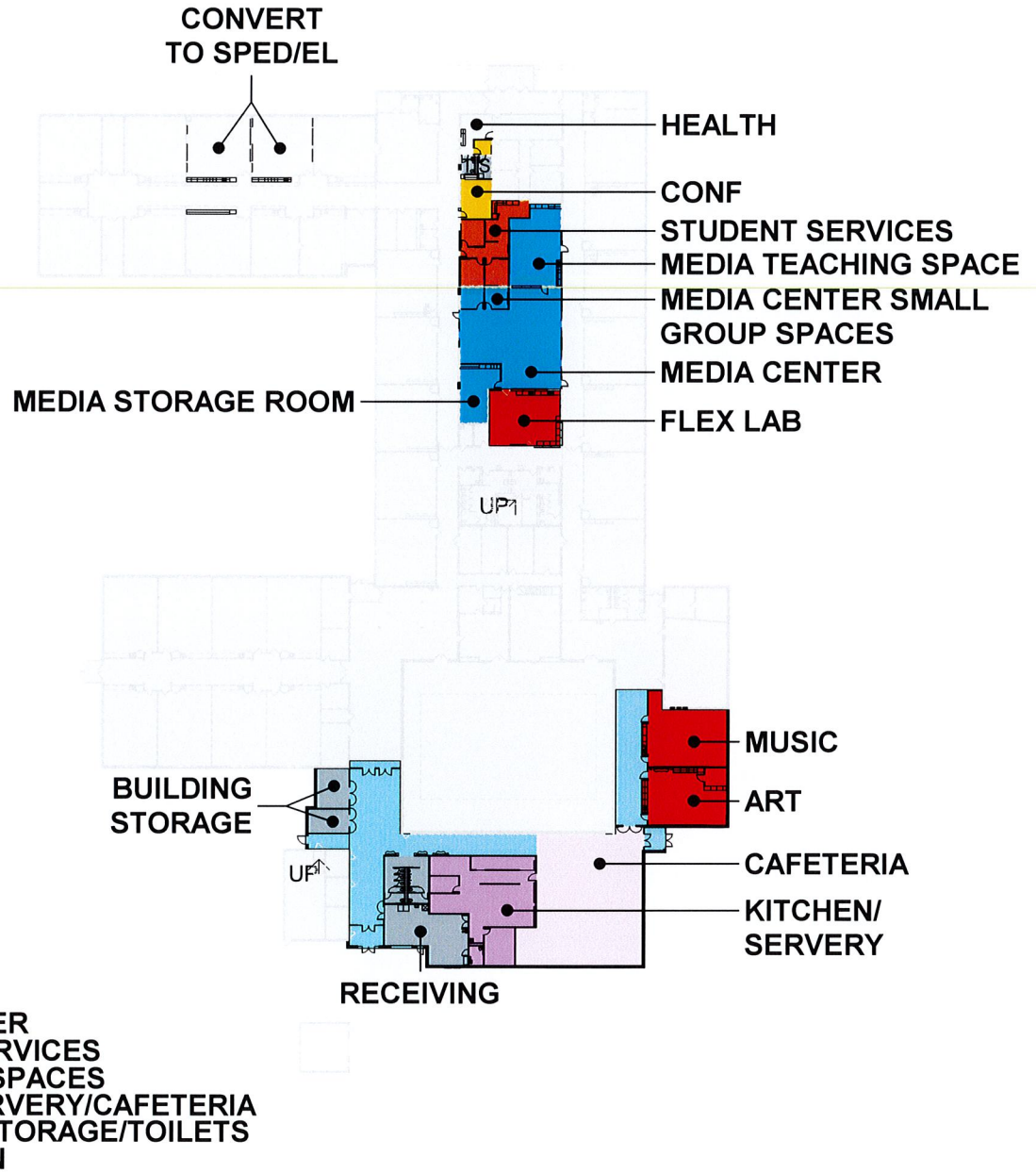
<u>BUILDING PROGRAM</u>	<u>REVIEW AND COMMENT</u>	<u>SCHEMATIC DESIGN</u>	<u>DESIGN DEVELOPMENT</u>
Music Addition			
Music	1,300 SF	1,060 SF	1,060 SF
Art	0 SF	1,060 SF	1,060 SF
SpED	750 SF	750 SF	750 SF
SpED	750 SF	750 SF	750 SF
Totals	2,800 SF	3,620 SF	3,620 SF
Cafeteria/Kitchen/Receiving Addition			
Kitchen	2,400 SF	1,150 SF	1,900 SF
Cafeteria	3,150 SF	3,500 SF	3,160 SF
Receiving/Stor	1,500 SF	1,725 SF	1,380 SF
Totals	7,050 SF	6,375 SF	6,440 SF
Media Center/Health Office Remodel			
Media (Including Teaching Space and Storage)			
Flex	2,300 SF	3445 SF	3445 SF
Health Office	0 SF	885 SF	885 SF
Student Services	0 SF	695 SF	695 SF
Student Services	0 SF	865 SF	865 SF
Totals	2,300 SF	5,890 SF	5,890 SF
Total Net Square Footage of Addition and Renovation	12,150 SF	15,885 SF	15,950 SF
Net to Gross Factor	1.31	1.20	1.20
Total Gross Square Footage	15,955 SF	19,200 SF	19,200 SF



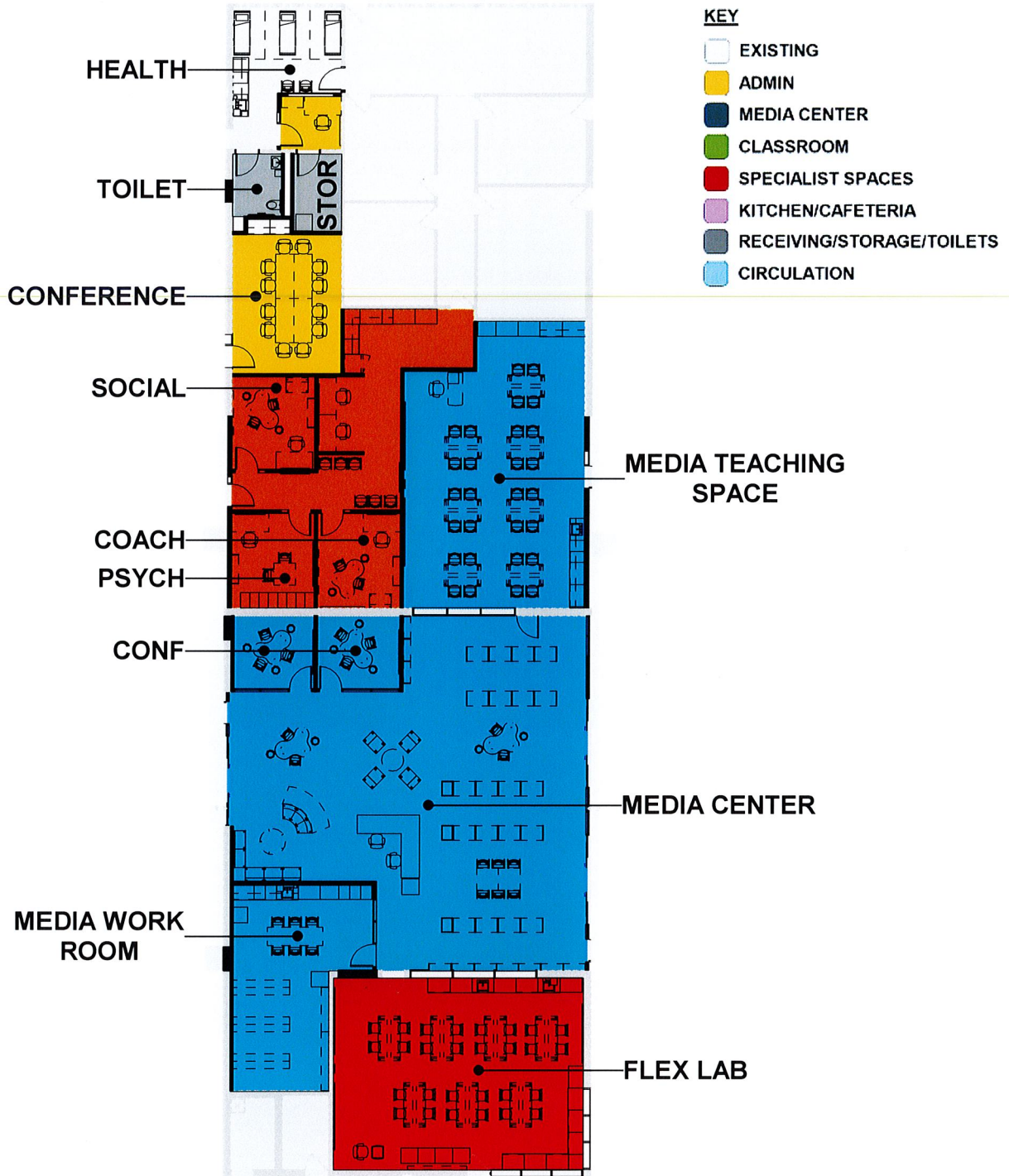
MEDIA CENTER
REMODEL
6,200 SF

ADDITION INCLUDING
KITCHEN/ CAFETERIA/
RECEIVING/ MUSIC/ ART
13,000 SF

RELOCATE FIRST ROW
OF PARKING



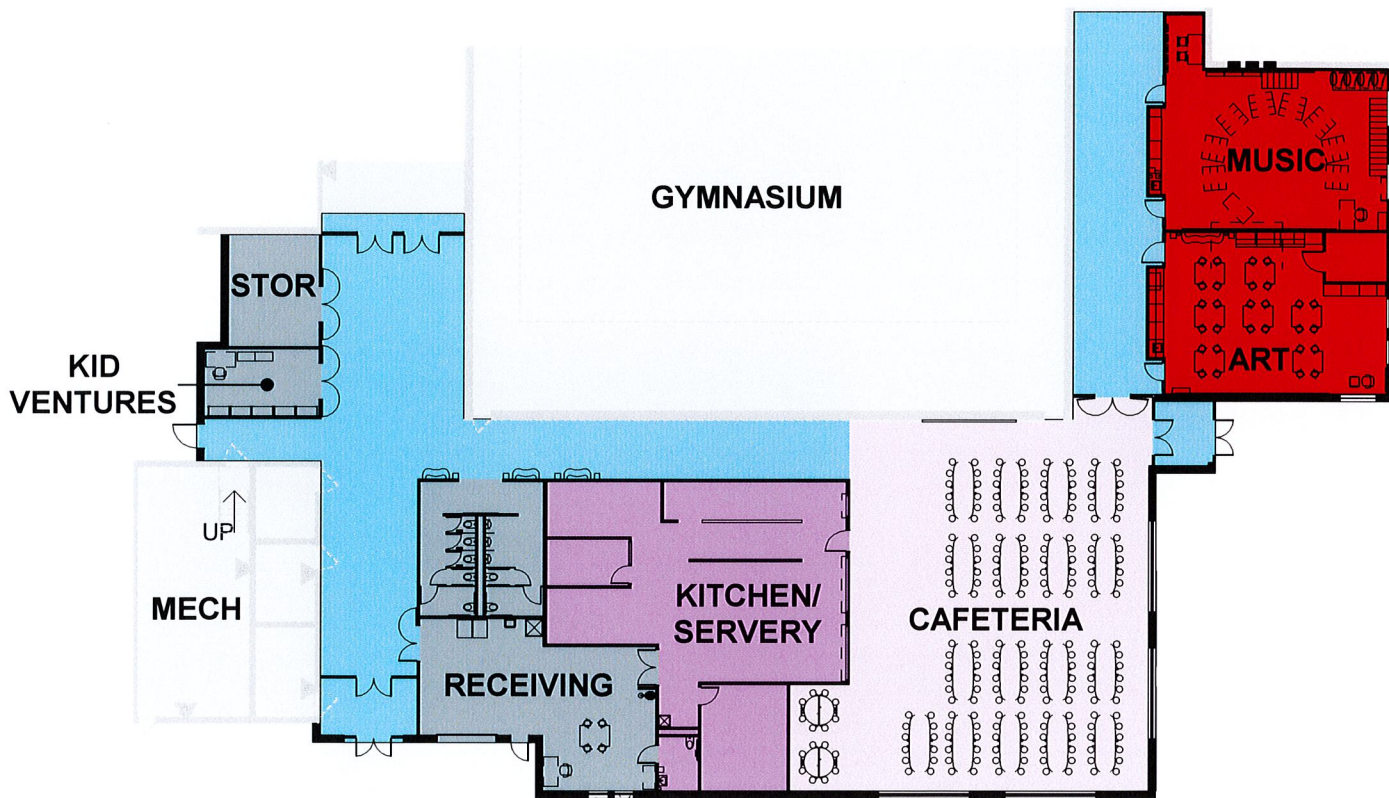
1 OVERALL FLOOR PLAN
 1" = 80'-0"
 0 60' 120'



1 RENOVATION PLAN
 1" = 20'-0"
 0 15' 30'

KEY

- EXISTING
- ADMIN
- MEDIA CENTER
- CLASSROOM
- SPECIALIST SPACES
- KITCHEN/CAFETERIA
- RECEIVING/STORAGE/TOILETS
- CIRCULATION



1

ADDITION PLAN

1" = 30'-0"

