

**NORTHFIELD PUBLIC SCHOOLS**  
**Office of the Superintendent**  
**Memorandum**

**TO:** Board of Education  
**FROM:** Matt Hillmann Ed.D., Superintendent  
**RE:** Table File Items for June 10, 2019, Regular School Board Meeting

V. Items for Discussion and Reports

C. Greenvale Park Elementary and Sibley Elementary Updates

Wold Architects and Engineers has provided an updated Greenvale Park Elementary and Sibley Elementary report.

VI. Consent Agenda

D. Personnel Items

a) Appointments

6. River Dittrich, Summer Recreation Position with Community Services, beginning 06/07/2019-08/31/2019; Skateboarding \$10.96/hr.

b) Increase/Decrease/Change in Assignment

39. Janet Amundson, Special Ed EA-PCA at the Middle School, add Special Ed EA-PCA Extended School Year for 3.5 hours/day Mon.-Thurs. at the Middle School, effective 06/27/2019-08/01/2019.
40. Stephanie Balma, School Readiness Teacher at Longfellow, add EarlyVentures Teacher for up to 40 hours/week on weeks that there is no Summer PLUS and up to 28 hours/week when there is Summer PLUS, effective 06/10/2019-08/23/2019. Step 6
41. Mary Boyum, Special Ed EA-PCA at Sibley, add Special Ed EA-PCA Extended School Year for 3.5 hours/day Mon.-Thurs. at Sibley, effective 06/27/2019-08/01/2019.
42. Shari Bridley, Special Ed EA-PCA at Longfellow, add Special Ed EA-PCA Extended School Year for 3.5 hours/day Mon.-Thurs. at Longfellow, effective 06/27/2019-08/01/2019.
43. Matthew Crase, Special Ed EA-PCA at the Middle School, add Special Ed EA-PCA Extended School Year for 3.5 hours/day Mon.-Thurs. at the Middle School, effective 06/27/2019-08/01/2019.
44. Whitney Docken, Speech Language Pathologist at Greenvale, add Speech Language Pathologist Extended School Year for up to 70 hours/summer with the District, effective 06/10/2019-08/15/2019.
45. Leah Driscoll, Special Education Teacher at Bridgewater, add Special Education Teacher Extended School Year for 3.5 hours/day Mon.-Thurs. at Sibley, effective 06/27/2019-08/01/2019.
46. Christopher Fatze, Special Education Teacher at the Middle School/Greenvale Park, add Special Education Teacher Extended School Year for 3.5 hours/day Mon.-Thurs. at Sibley, effective 06/27/2019-08/01/2019.
47. Teresa Findley, Special Ed EA-PCA at the Middle School, add Special Ed EA-PCA Extended School Year for 3.5 hours/day Mon.-Thurs. at the Middle School, effective 06/27/2019-08/01/2019.
48. Kay Goodrich, Special Ed EA-PCA at the Middle School, add Special Ed EA-PCA Extended School Year for 3.5 hours/day Mon.-Thurs. at the Middle School, effective 06/27/2019-08/01/2019.
49. Mara Hessian, Special Ed EA-PCA at Bridgewater, add Special Ed EA-PCA Extended School Year for 3.5 hours/day Mon.-Thurs. at Sibley, effective 06/27/2019-08/01/2019.
50. Melanie Klein, Special Education Teacher at Sibley, add Special Education Teacher Extended School Year for 3.5 hours/day Mon.-Thurs. at Sibley, effective 06/27/2019-08/01/2019.
51. Kristi Korteum, Assistant Math Coach at the High School, change to Head Math Team Coach at the High School, effective 06/06/2019. Level H, Step 1
52. Richelle Kruger, Special Ed EA-PCA at the High School, add Special Ed EA-PCA Extended School Year for 3.5 hours/day Mon.-Thurs. at the Middle School, effective 06/27/2019-08/01/2019.
53. Correction: Lisa Laine, Spec Ed EA-PCA for 4.25 hours/day; Kindergarten for 2 hours/day and Supervisory for .83 hours/day at Greenvale Park, change to Spec Ed EA-PCA for 4 hours/day; Kindergarten for 2 hours/day and Supervisory for 1.25 hours/day at Greenvale Park, effective 08/27/2019.

54. Delores Larsen, Special Ed EA-PCA at Sibley, add Special Ed EA-PCA Extended School Year for 3.5 hours/day Mon.-Thurs. at Sibley, effective 06/27/2019-08/01/2019.
55. Jennifer Link, Special Education Teacher at the Middle School, add Special Education Teacher Extended School Year for 3.5 hours/day Mon.-Thurs. at the Middle School, effective 06/27/2019-08/01/2019.
56. Carolyn Manderfeld, Special Ed EA-PCA at the Middle School, add Special Ed EA-PCA Extended School Year for 3.5 hours/day Mon.-Thurs. at Sibley, effective 06/27/2019-08/01/2019.
57. Makenzie Mathews, Special Ed EA-PCA at Longfellow, add Special Ed EA-PCA Extended School Year for 3.5 hours/day Mon.-Thurs. at Longfellow, effective 06/27/2019-08/01/2019.
58. Brigid McCabe, Special Ed EA-PCA at Longfellow, add Special Ed EA-PCA Extended School Year for 3.5 hours/day Mon.-Thurs. at Longfellow, effective 06/27/2019-08/01/2019.
59. Beth McClune, Special Ed EA-PCA at the Middle School, add Special Ed EA-PCA Extended School Year for 3.5 hours/day Mon.-Thurs. at the Middle School, effective 06/27/2019-08/01/2019.
60. Kimberly Medin, Special Education Teacher at the Middle School, add Special Education Teacher Extended School Year for 3.5 hours/day Mon.-Thurs. at Sibley, effective 06/27/2019-08/01/2019.
61. Jacqueline Meyer, Special Ed EA-PCA at the High School, add Special Ed EA-PCA Extended School Year for 3.5 hours/day Mon.-Thurs. at Sibley, effective 06/27/2019-08/01/2019.
62. LaDonna Miller, Special Ed EA-PCA at Greenvale Park, add Special Ed EA-PCA Extended School Year for 3.5 hours/day Mon.-Thurs. at Sibley, effective 06/27/2019-08/01/2019.
63. Ruth Morgan Malecha, Special Ed EA-PCA at the High School, add Special Ed EA-PCA Extended School Year for 3.5 hours/day Mon.-Thurs. at the Middle School, effective 06/27/2019-08/01/2019.
64. Debra Pack, Special Ed EA-PCA at the High School, add Special Ed EA-PCA Extended School Year for 3.5 hours/day Mon.-Thurs. at the Middle School, effective 06/27/2019-08/01/2019.
65. Amelia Pantze, Special Ed EA-PCA at Greenvale Park, add Special Ed EA-PCA Extended School Year for 3.5 hours/day Mon.-Thurs. at Sibley, effective 06/27/2019-08/01/2019.
66. Kyle Roth, Special Education Teacher at Longfellow, add Special Education Teacher Extended School Year for 3.5 hours/day Mon.-Thurs. at Longfellow, effective 06/27/2019-08/01/2019.
67. Jessica Rushton, Special Ed EA-PCA at Sibley, add Special Ed EA-PCA Extended School Year for 3.5 hours/day Mon.-Thurs. at Sibley, effective 06/27/2019-08/01/2019.
68. Tammy Schwagerl, Special Ed EA-PCA at the High School, add Special Ed EA-PCA Extended School Year for 3.5 hours/day Mon.-Thurs. at Longfellow, effective 06/27/2019-08/01/2019.
69. Deborah Seitz, Special Education Teacher at the Middle School, add Special Education Teacher Extended School Year for 3.5 hours/day Mon.-Thurs. at the Middle School, effective 06/27/2019-08/01/2019.
70. Donna Torgeson, Special Ed EA-PCA at the Middle School, add Special Ed EA-PCA Extended School Year for 3.5 hours/day Mon.-Thurs. at the Middle School, effective 06/27/2019-08/01/2019.
71. ReNae Trebelhorn, Special Education Teacher at the Middle School, add Special Education Teacher Extended School Year for 3.5 hours/day Mon.-Thurs. at the Middle School, effective 06/27/2019-08/01/2019.
72. Anne Vander Martin, Special Ed EA-PCA at Sibley, add Special Ed EA-PCA Extended School Year for 3.5 hours/day Mon.-Thurs. at Sibley, effective 06/27/2019-08/01/2019.
73. Andrea Waldoch, Special Ed EA-PCA at Bridgewater, add Special Ed EA-PCA Extended School Year for 3.5 hours/day Mon.-Thurs. at Sibley, effective 06/27/2019-08/01/2019.
74. Kari Winter, Special Education Teacher at Longfellow, add Special Education Teacher Extended School Year for 3.5 hours/day Mon.-Thurs. at Longfellow, effective 06/27/2019-08/01/2019.
75. Sarah Woodcock, Early Ventures Teacher for 36 hours/week at Longfellow, change to Early Ventures Teacher for 39.5 hours/week at Longfellow, effective 06/10/2019.
76. Carina Zick, Special Ed EA-PCA at Sibley, add Special Ed EA-PCA Extended School Year for 3.5 hours/day Mon.-Thurs. at Sibley, effective 06/27/2019-08/01/2019.

c) Leave of Absence

d) Retirements/Resignations/Terminations

5. Abigail Estep, Community Services Position, Decline position effective 06/03/2019.
6. Jada Johnson, Community Services Position, Decline position effective 05/28/2019.
7. Charles Pratt, Community Services Position, Decline position effective 05/29/2019.
8. Dylan Warner, KidVentures Site Leader, termination effective 06/06/2019.

*\* Conditional offers of employment are subject to successful completion of a criminal background check and Prework screening (if applicable).*

VIII. Items for Information

- A. End of the Year Enrollment Report. The end of the year enrollment report is attached.



# Independent School District 659



## School Board Update

June 10, 2019



 **Knutson** Construction

 *Northfield*  
PUBLIC SCHOOLS

# Agenda

1. Introductions
2. Greenvale Park Elementary Update
  - » Core Planning
  - » SD Diagrams
  - » User Group Process
  - » DD Diagrams
  - » Exterior Design
  - » Interior Design
  - » Project Schedule
3. Sibley Elementary Update
  - » Core Planning
  - » SD Diagrams
  - » User Group Process
  - » DD Diagrams
  - » Project Schedule



 Knutson Construction

 Northfield  
PUBLIC SCHOOLS

## Start With Why

### Northfield Public School's Vision

**"We will prepare every student for lifelong success within a world-class learning environment with a commitment to community partnerships and sustainability."**

### Our Facilities Mission

Deliver educational excellence that empowers all learners to engage in our dynamic world.



 Knutson Construction

 Northfield  
PUBLIC SCHOOLS

# Design Process

## Project Phases:

- » Schematic Design
  - » Putting the Pieces in the Right Locations
  - » Core Planning Groups
- » Design Development
  - » Moving from 2D to 3D
  - » User Group Meetings
  - » Coordination
- » Construction Documents
  - » Drawings / Contracts for Bidding
- » Bidding
- » Construction
- » Occupancy



**Significant  
Input**



**We are  
Here**



# Greenvale Park Elementary Core Planning



 Knutson Construction

 Northfield  
PUBLIC SCHOOLS

# Referendum Scope

## Program Overview

- New K-5 Elementary School, designed for future expandability including the following:
  - » 90,000 sf
  - » 600 student, K-5
  - » (5) classrooms for K-3, (4) Classrooms for 4-5
  - » Grade “clusters” with flexible learning space, staff planning area, and grade storage
  - » Special Services classrooms and offices
  - » Media Center
  - » Computer Lab, Art, Music, Band
  - » Kitchen, Cafeteria, Receiving
  - » (1) competition size Gymnasium



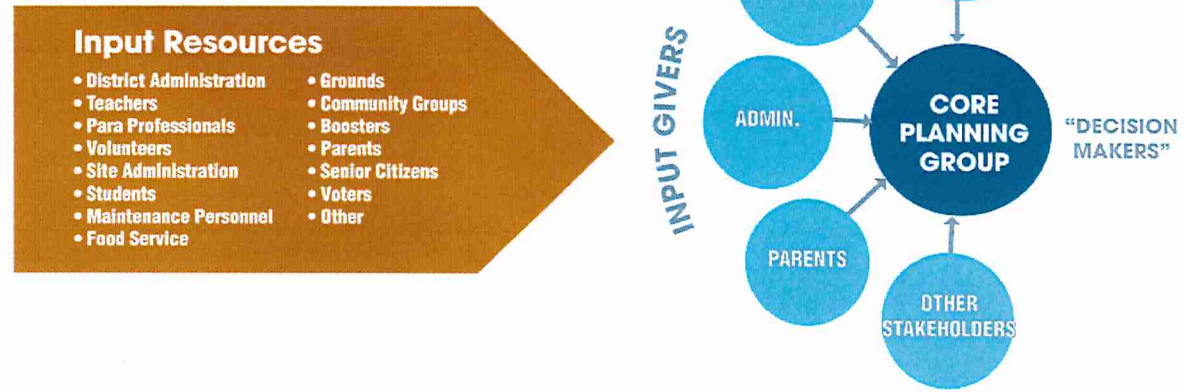


# Site





# Planning Process



## To be successful, a Core Planning Group must:

- » Be empowered to make decisions
- » Be willing to make decisions
- » Request information, not a decision from input givers
- » Be a manageable size to allow for a faster timeline



# New Greenvale Park Design Team

## Core Planning Team

- Guiding Principles
- Developed Criteria
- Met 4 times:
  - » January 15, 2019
  - » January 31, 2019
  - » February 21, 2019
  - » February 28, 2019

Ruben Alvarez, ISD #659  
 Danielle Amundson, ISD #659  
 Joy Amunrud, ISD #659  
 Laura Berdahl, ISD #659  
 Betsey Buckheit, Community Member  
 Alisha Clarey, ISD #659  
 Maggie Epstein, Parent  
 Bonnie Jean Flom, Community Member  
 Janneth Garcia, Parent  
 Stephanie Hagberg, ISD #659  
 Mary Grace Hanson, ISD #659

Carries Rice, ISD #659  
 Sam Richardson, ISD #659  
 Julia Sogla, Parent  
 Noel Stratmoen, ISD #659  
 Scott Tempel, City of Northfield  
 Bridget Timerson, ISD #659  
 Ellen Trotman ISD #659  
 Lori Warner, ISD #659  
 Brent Yule, ISD #659  
 Sari Zach, ISD #659  
 Sarah Lyman, Parent

Val Mertesdorf, ISD #659  
 Amanda Miller, ISD #659  
 Julie Ochs, ISD #659  
 Angie Kruse, ISD #659  
 Anne Larson, ISD #659  
 Elias Lawler, District Youth Council Representative  
 Renee Malecha, ISD #659  
 Jeff McCormick, Parent  
 Matt Hillmann ISD #659  
 Ellen Iverson, ISD #659



## Guiding Principles

- The media center should serve as the heart of the building while being separated from circulation.
- The building should support community services (clothing, food pantry) – these should be near the entry and support privacy.
- The design should incorporate adequate storage for year round functions. Furniture should be mobile to allow for ease of movement.
- The design should foster a sense of community and support staff collaboration.
- The design should provide green space and opportunities to connect to nature.
- The project should incorporate sustainable features and energy efficiency into the design.
- The building should offer a variety of pull-out opportunities.



 Knutson Construction

 Northfield  
PUBLIC SCHOOLS

## Guiding Principles

- The building will be organized into grade level learning communities. Each of these learning communities will have a flexible learning area for collaboration and small group work. These spaces should be designed to be adaptable.
- Special education should be located in a centralized area for student access and collaboration. The special education suite should be located in a quiet, private area This can be located on both floors.
- The design should support a multiple variety of large group gathering spaces including grade level meetings, speaking events, performances for families, etc.
- The design should support community school functions. This may include: flex labs, grade level collaboration areas, music, band, art, gym, cafeteria.



## Design Criteria

- The site design should provide a safe connection to the surrounding community for pedestrians and bicyclists.
- Main Office relationships:
  - » The main entry should have a secure vestibule directly connected to the main office.
  - » The nurse should be located at the main office and have a connection for students directly from the hallway.
  - » The staff workroom should be located directly off the hallway with a connection to the main office.
- Spaces used outside of school hours (gym, cafeteria, flex labs, music and art rooms) should be located for easy access and security. Classroom areas should have the option to be secured from these spaces.
- Classrooms should have four walls with natural daylight and visibility into the collaboration area. Classrooms should surround the collaboration area to support each grade level's sense of community.



 Knutson Construction

 Northfield  
PUBLIC SCHOOLS

## Design Criteria

- Staff satellite work/copy space should be centrally located to classrooms.
- The following spaces should have direct access to natural daylight:
  - » Cafeteria, classrooms, gym, media center, main office reception, Principal's office, art, teacher's lounge.
- Kindergarten, 1st Grade, and DCD classroom should be located in an area with less traffic.
- Student services such as the social worker and school psychologist should be centrally located and teamed together. The design of these spaces should support privacy.
- Student and staff bathrooms should be distributed appropriately.
- The gymnasium will be used for a variety of functions, both during and outside the school day. The gym should have the ability to divide.
- Students should not share lockers.
- Receiving should not circulate through the gym. Receiving should have easy access to the kitchen.



 Knutson Construction

 Northfield  
PUBLIC SCHOOLS

## Design Criteria

- Specialist spaces (art, gym, music, band) should be near each other with adequate circulation for class transitions.
- Art should be located by the flexible labs.
- Teacher's lounge should be located near the cafeteria. Circulation to this space should not be through the cafeteria.
- There should be an opportunity for handwashing near the cafeteria.

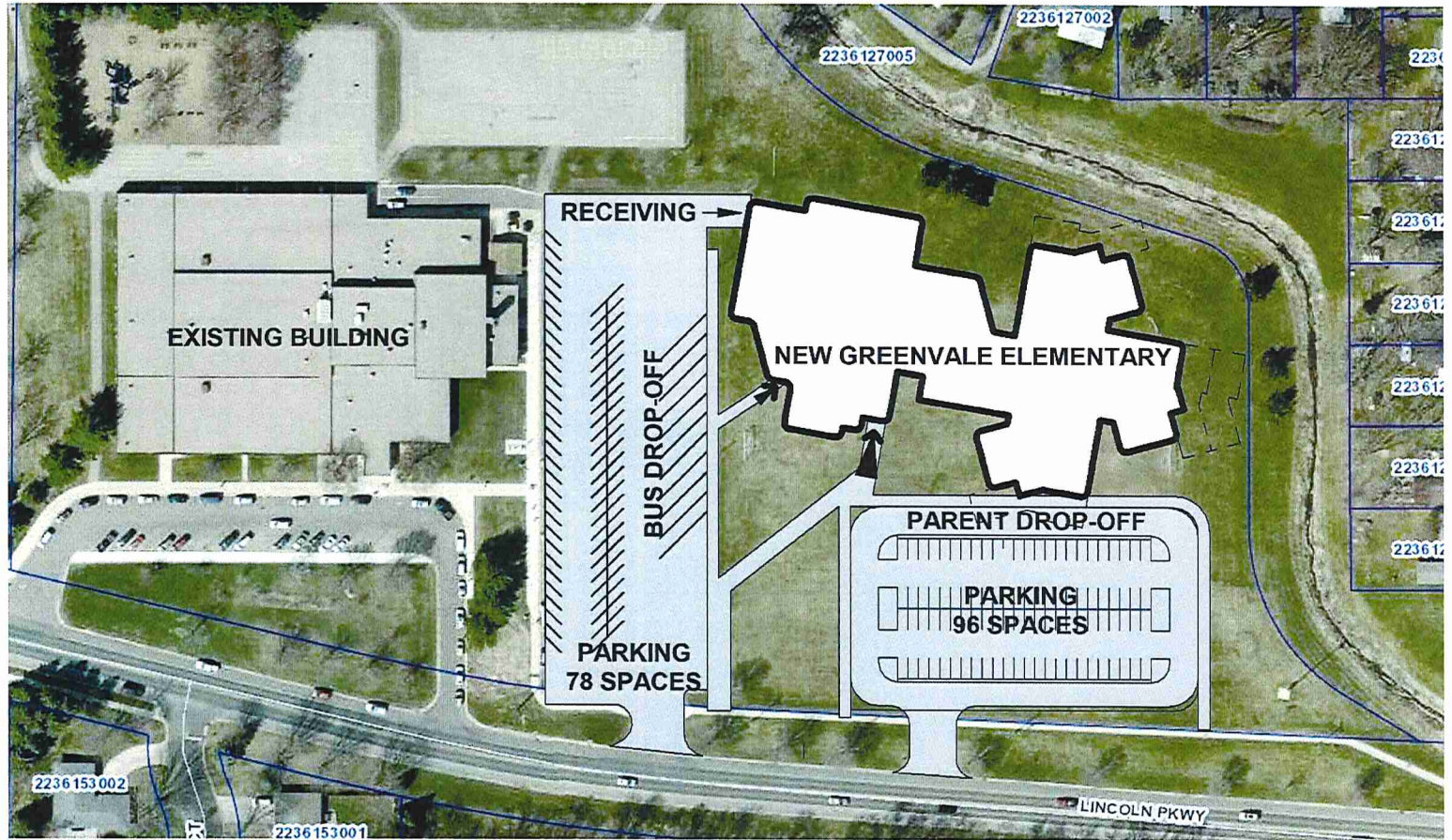




# Schematic Design Diagram: Site

 Knutson Construction

 Northfield  
PUBLIC SCHOOLS



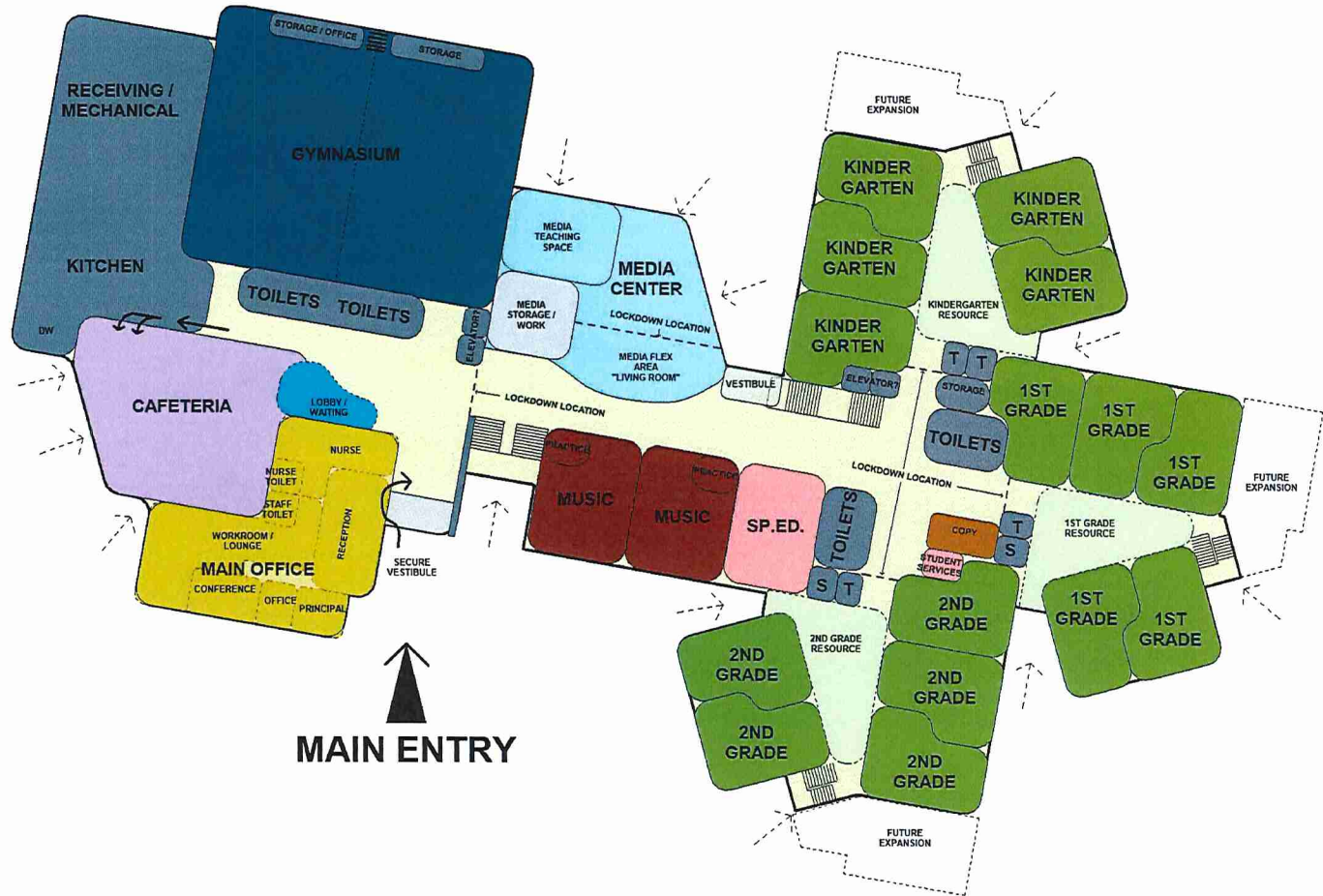


Knutson Construction

Northfield PUBLIC SCHOOLS

# Schematic Design Diagram: Main Level

- SPECIAL EDUCATION
- ART / MUSIC
- ADMINISTRATION
- OFFICE
- CLASSROOM
- CIRCULATION
- MEDIA CENTER
- GYMNASIUM
- KITCHEN / CAFETERIA
- MECHANICAL / STORAGE / TOILETS



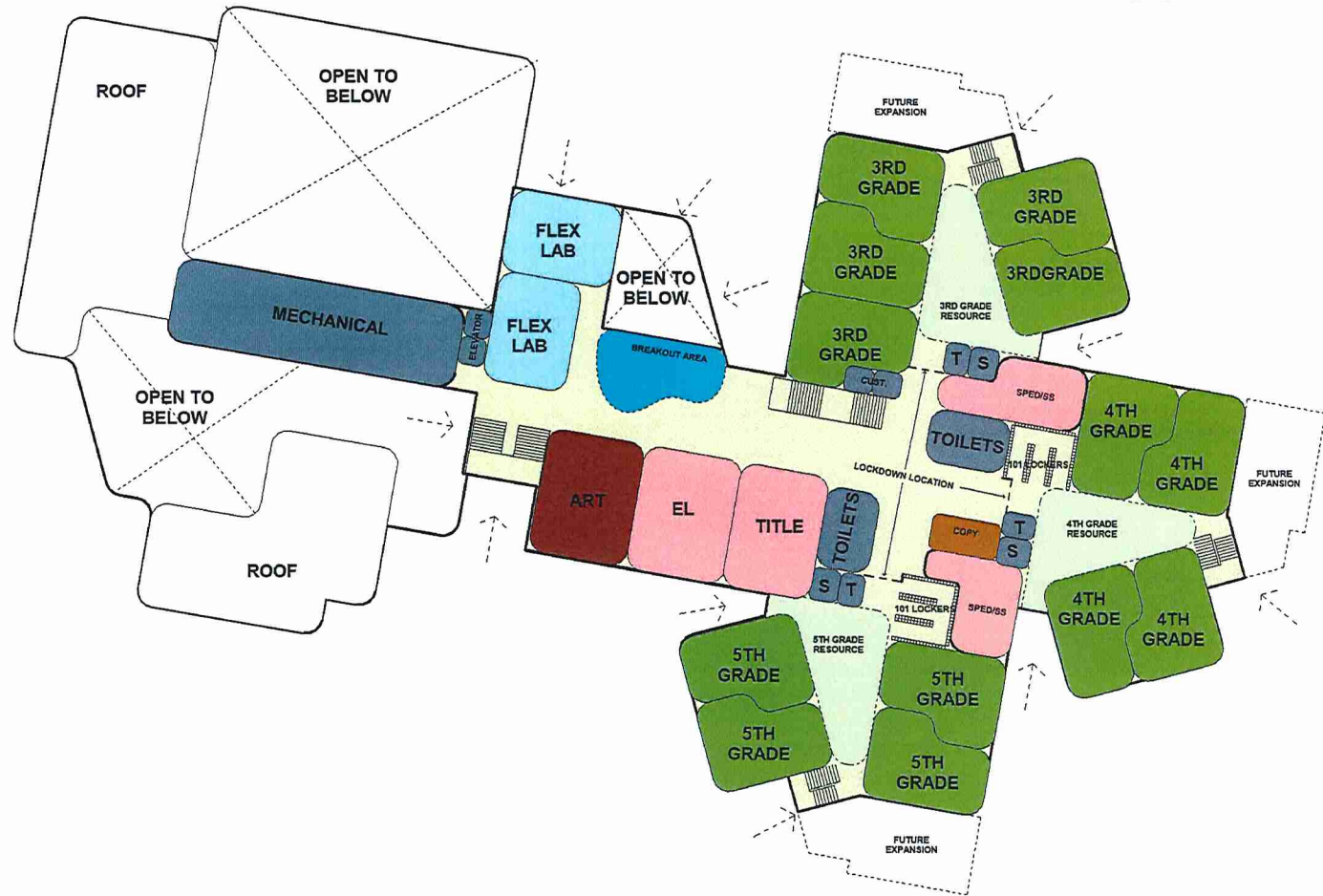


Knutson Construction

Northfield PUBLIC SCHOOLS

# Schematic Design Diagram: Upper Level

- SPECIAL EDUCATION
- ART / MUSIC
- ADMINISTRATION
- OFFICE
- CLASSROOM
- CIRCULATION
- MEDIA CENTER
- GYMNASIUM
- KITCHEN / CAFETERIA
- MECHANICAL / STORAGE / TOILETS





# Greenvale Park Elementary User Groups



# New Greenvale Park User Groups

## USER GROUP TEAMS

- Met 2 times:
  - » April & May 2019

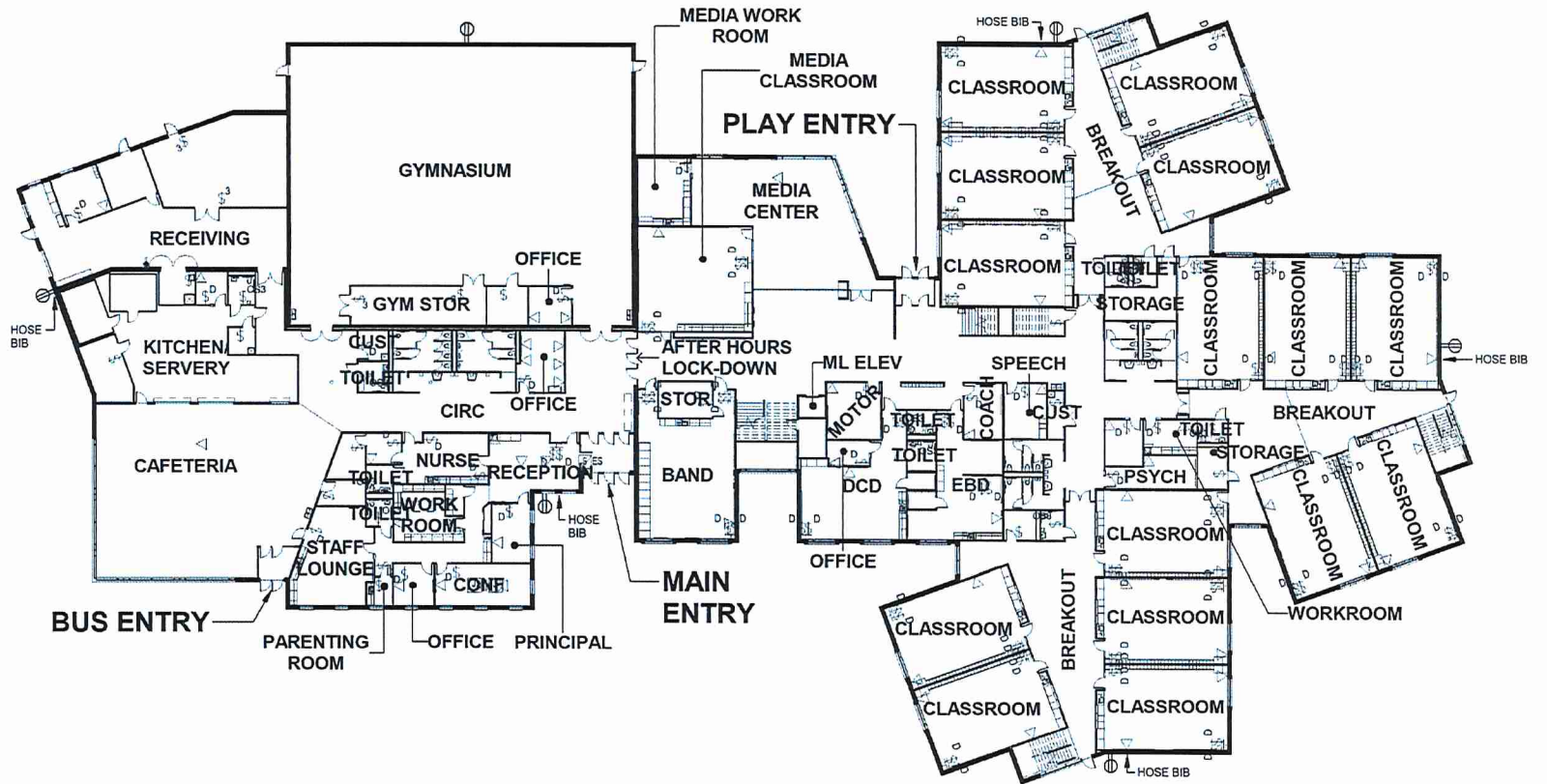
Betty Kline, ISD #659	Kelle Edwards, ISD #659	Mary Grace Hanson, ISD #659	Gigi Tisdale, ISD #659
Jim Kulseth, ISD #659	Lisa Laurie, ISD #659	Erin Bailey, ISD #659	Joyce Lindstrom, ISD #659
Sam Richardson, ISD #659	Sarah Moyer, ISD #659	Savannah Stuckmayer, ISD #659	Matthew Berg-Wall, ISD #659
Ellen Trotman, ISD #659	Robyn Spillman, ISD #659	Laura Berdahl, ISD #659	Jane Streit, ISD #659
Robert Garcia, ISD #659	Ruben Alvarez, ISD #659	Breezy Barrett, ISD #659	Kristy Malecha, ISD #659
Kim Briske, ISD #659	Michelle Sickler, ISD #659	Melissa Larsen, ISD #659	LaDonna Miller, ISD #659
Amanda Miller, ISD #659	Alisha Clarey, ISD #659	Diane Torbenson, ISD #659	Deb Thomforde, ISD #659
Brent Yule, ISD #659	Kimbra Dimick, ISD #659	Heather Ryden, ISD #659	Lisa Nelson, ISD #659
Ryan Driscoll, ISD #659	Matt Hillmann, ISD #659	Brooke Bufler, ISD #659	Jill Bohlen, ISD #659
Angela Eliason, ISD #659	Bridget Timerson, ISD #659	Renee Malecha, ISD #659	Teri Quamme, ISD #659
Natalie Kruger, ISD #659	Sari Zach, ISD #659	Julie Ochs, ISD #659	Lily Landry, ISD #659
Stefanie Bothun, ISD #659	Kris Johnson, ISD #659	Stephany Stromme, ISD #659	Elizabeth Ziemann, ISD #659
Stephanie Hagberg, ISD #659	Danielle Amundson, ISD #659	Mitzi Holden, ISD #659	Amanda Solinger, ISD #659
Kathy Fliczek, ISD #659	Charlie Alvarez, ISD #659	Nicole Papke, ISD #659	



Knutson Construction

Northfield PUBLIC SCHOOLS

# Design Development Diagram: Main Level

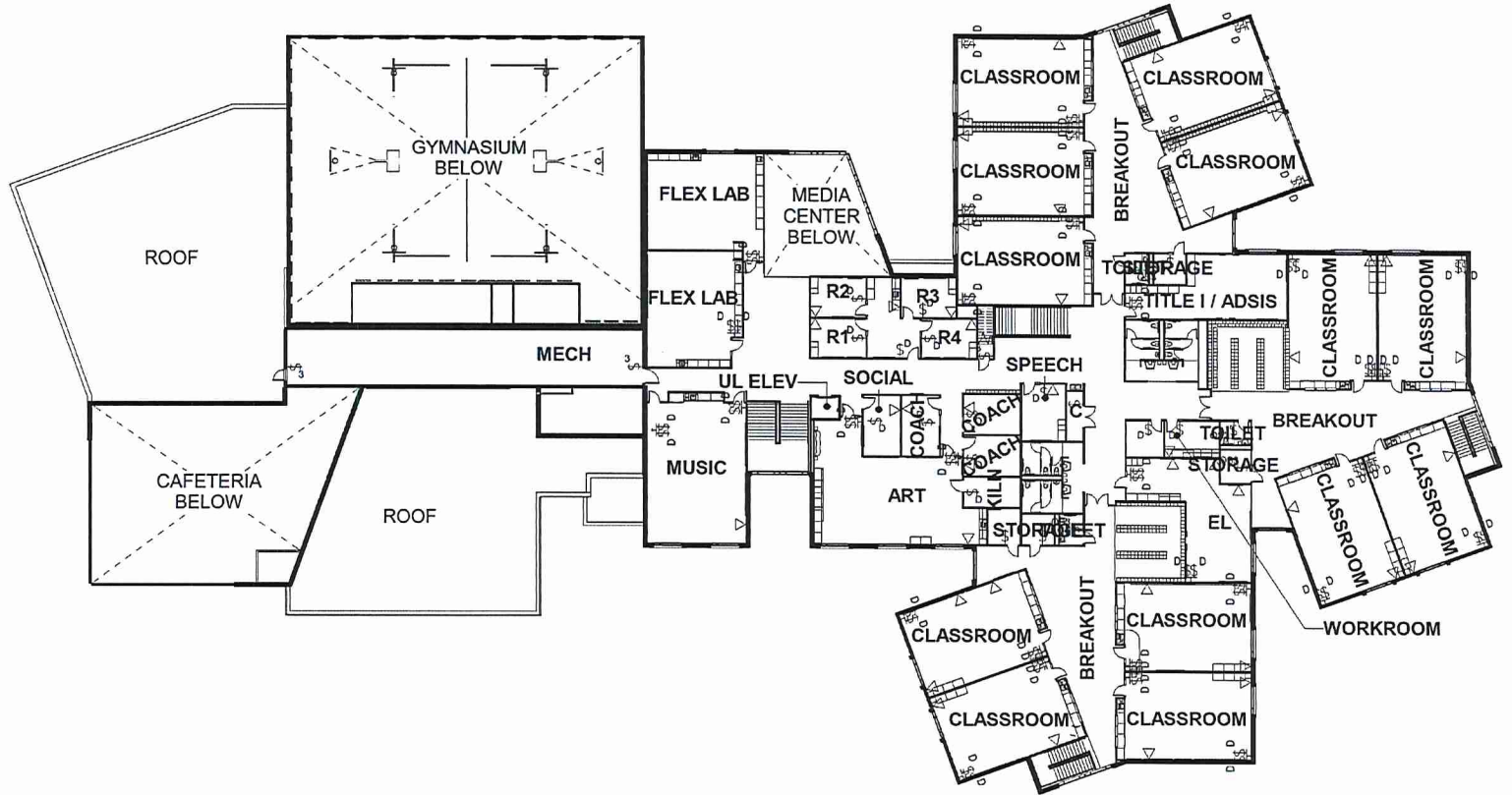




Knutson Construction

Northfield PUBLIC SCHOOLS

# Design Development Diagram: Upper Level





**Knutson** Construction

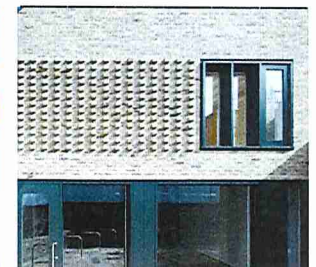
**Northfield**  
PUBLIC SCHOOLS

# Exterior Precedents

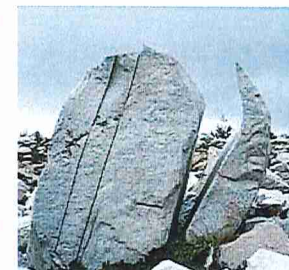
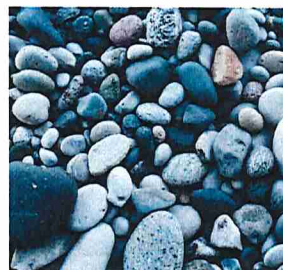
## METAL/BRICK



## HIGHLIGHTED FENESTRATION



## NATURE-INSPIRED





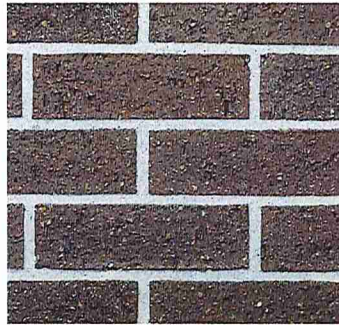


**Knutson**Construction

**Northfield**  
PUBLIC SCHOOLS

# Exterior Materials - Proposed

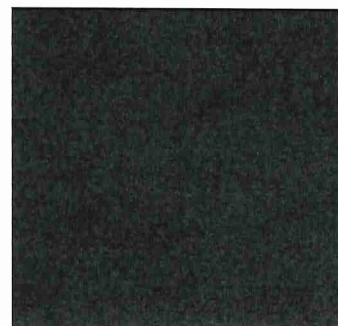
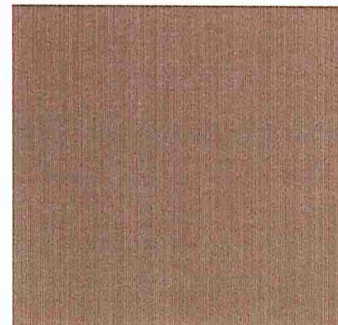
BRICK



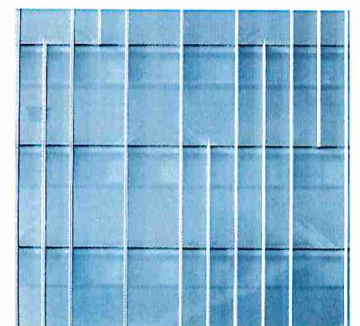
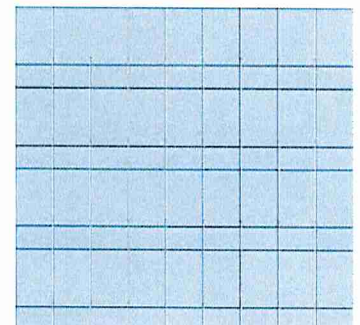
PRECAST  
CONCRETE



METAL PANEL



GLASS/MULLION  
PATTERN



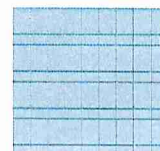


# Existing Greenvale Park ES





# Exterior – Overall



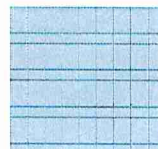
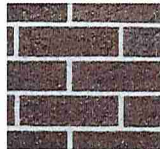


# Exterior – Overall





# Exterior – Parent Drop-Off

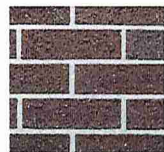




 **Knutson** Construction

 *Northfield*  
PUBLIC SCHOOLS

## Exterior – Classroom Pods

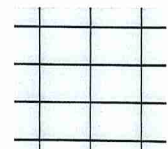
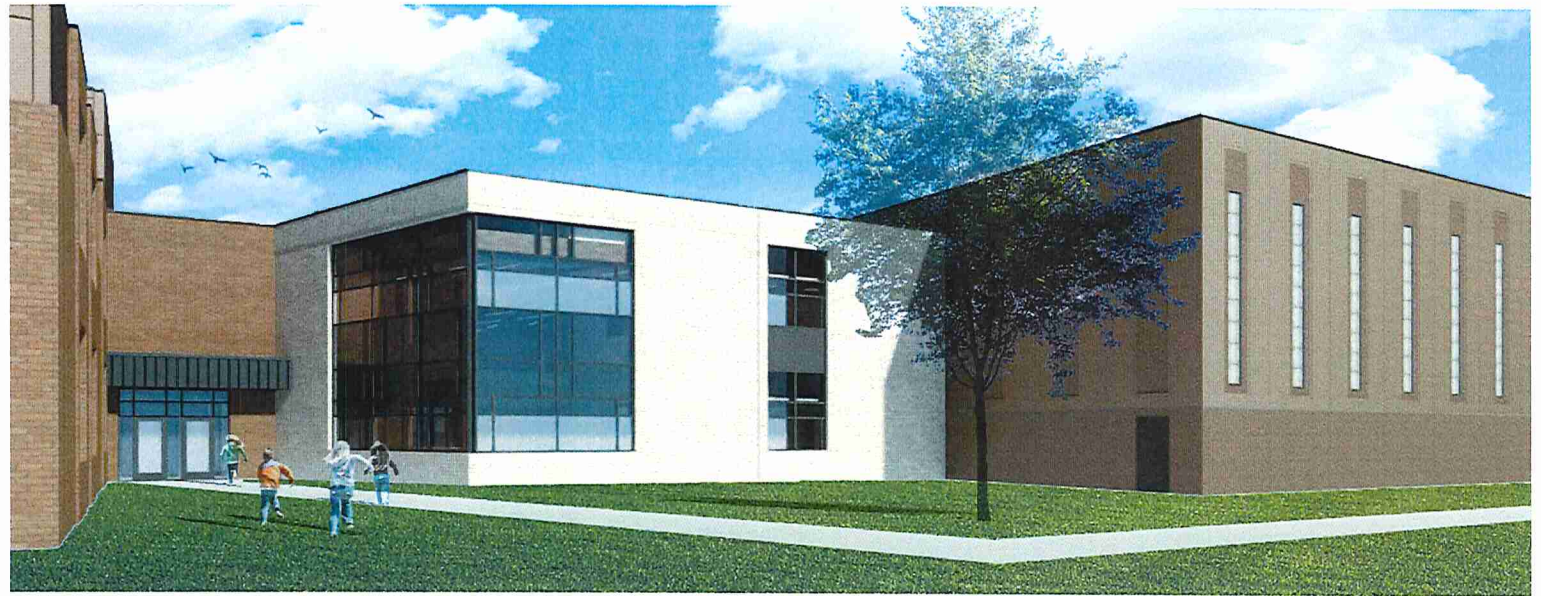




 Knutson Construction

 Northfield  
PUBLIC SCHOOLS

## Exterior – Media Center





 Knutson Construction

 Northfield  
PUBLIC SCHOOLS

# Interior Materials - Inspiration

## LICHEN

Blend of Textures



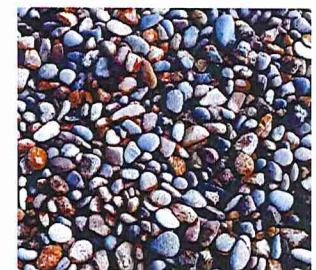
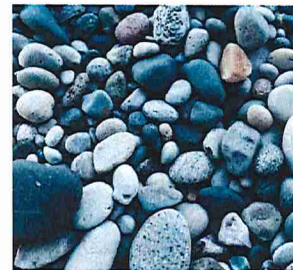
## PRAIRIE/FLOWERS

Reflective of natural surroundings and community



## PEBBLES

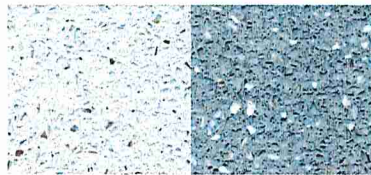
Timeless Materiality







# Interior – Cafeteria



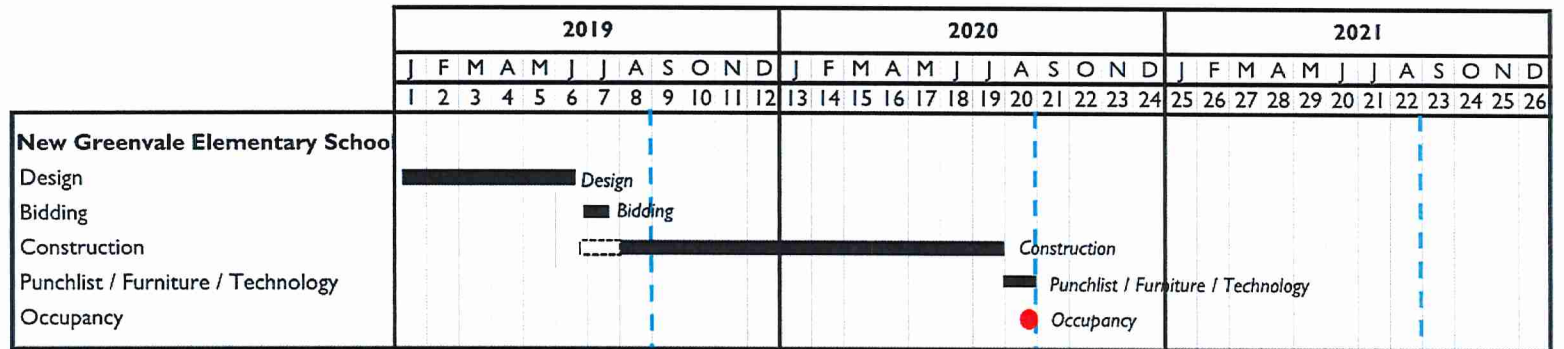


# Interior – Media Center





# Construction Timeline



## Next Steps



### New Greenvale Park:

- June 7<sup>th</sup> – Materials Meeting
- July 12, 2019 – Issue Construction Documents
- August 1, 2019 – Bid Opening
- End of Summer 2020 – Project Completion



# Sibley Elementary Core Planning



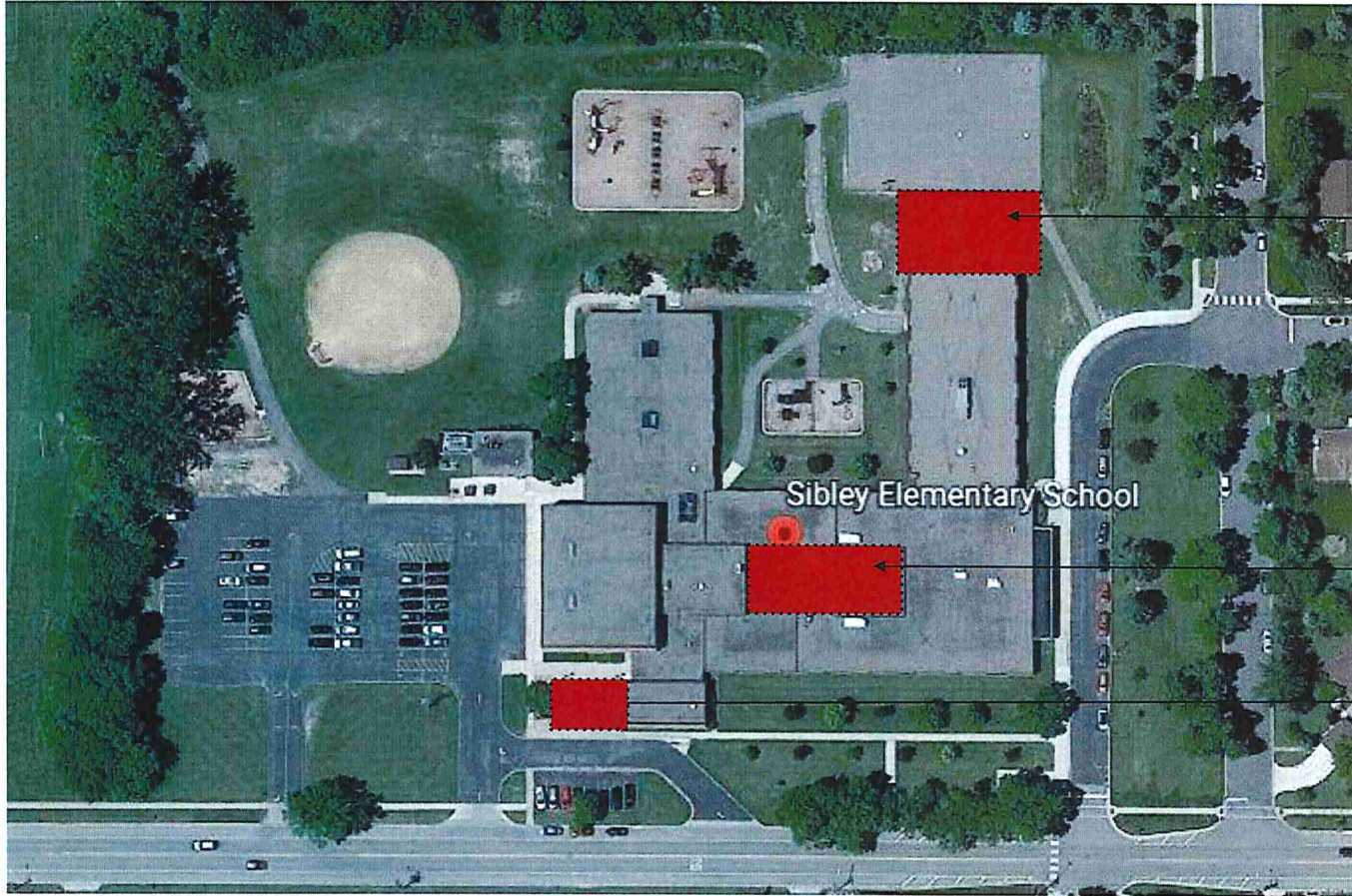
## Referendum Scope

### Program Overview

- 5,600 sf Media Center Renovation
- 3,300 sf Music / SpEd Addition
- 9,750 sf Kitchen, Cafeteria, Receiving Addition



# Site Diagram: Referendum



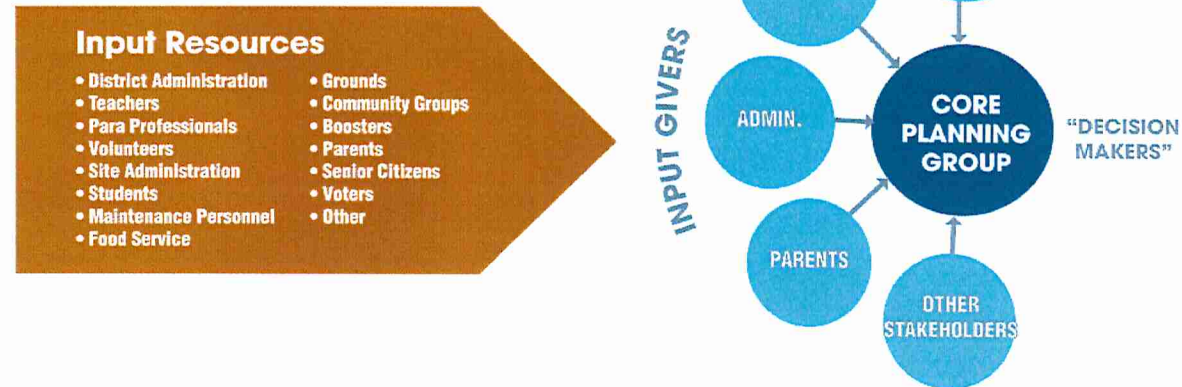
KITCHEN/  
CAFETERIA/  
RECEIVING  
ADDITION  
9,750 S.F.

MEDIA  
CENTER  
REMODEL  
5,600 S.F.

MUSIC  
ADDITION  
3,300 S.F.



# Planning Process



## To be successful, a Core Planning Group must:

- » Be empowered to make decisions
- » Be willing to make decisions
- » Request information, not a decision from input givers
- » Be a manageable size to allow for a faster timeline





# Sibley Elementary Design Team

## Core Planning Team

- Guiding Principles
- Developed Criteria
- Met 3 times:
  - » April 25, 2019
  - » May 2, 2019
  - » May 7, 2019

Lori Malecha, ISD #659	Pasha Quaas, Parent
Julie Pritchard, ISD #659	Vic Dreier, Parent
Dan Warner, ISD #659	Jane Ehlers, ISD #659
Dorothy Cohan, ISD #659	Karleen Sherman, ISD #659
Stephanie Mahal, ISD #659	Val Mertesdorf, ISD #659
Sean Simonson, Parent	Matt Hillmann, ISD #659
Peter McGorry, ISD #659	Jim Kulseth, ISD #659
Scott Sannes, ISD #659	
Ann Hehr, ISD #659	
Mary Kate Maney, ISD #659	
Amy Goerwitz, ISD #659	



## Guiding Principles

- The building should meet the needs of today while providing for future flexibility.
- The building should be safe and secure while being warm and welcoming for students, staff and visitors.
- The building addition and renovation should provide opportunities for natural daylight.
- The design should support before/after school functions. This may include: flex lab, art, music, gym, and cafeteria.
- The media center should serve as the heart of the building while being separate from circulation.
- The design should be inspiring to students and have a signature space that expresses Sibley pride.
- The design should support ease of building transitions.
- The design should support a variety of small group spaces that are accessible and centrally located.
- The design should support universal accessibility



 Knutson Construction

 Northfield  
PUBLIC SCHOOLS

## Design Criteria

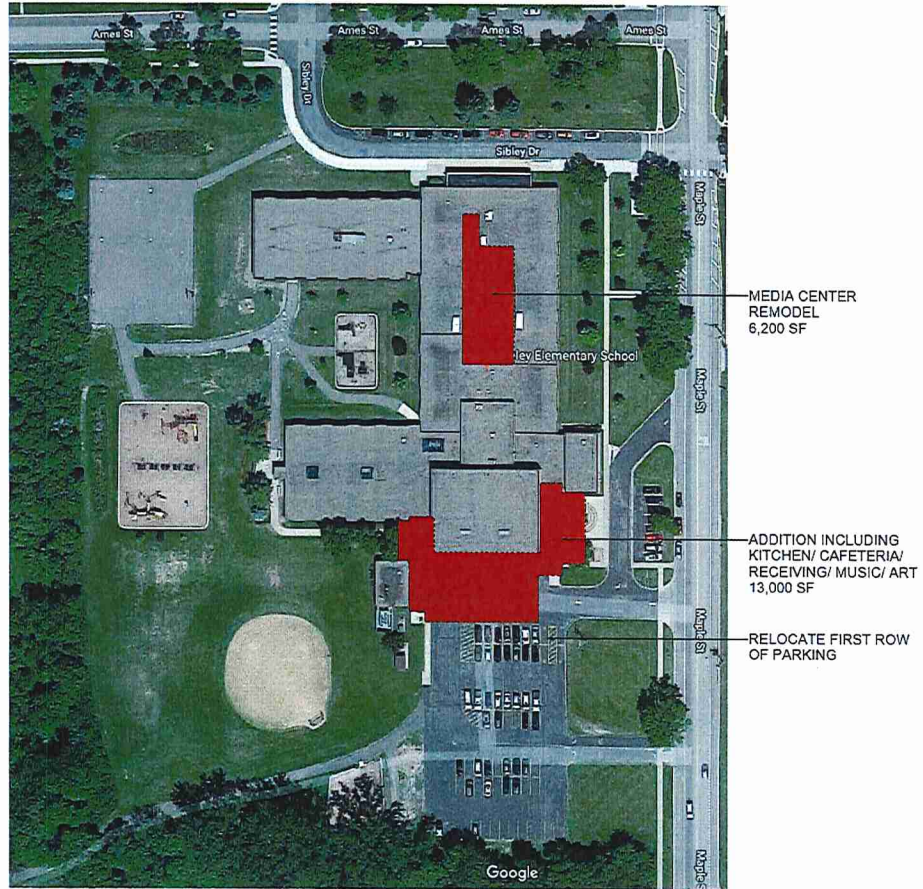
- The cafeteria design should be flexible, supporting performance and learning. Accommodate 220 students each lunch period.
- Specialist spaces, such as the gymnasium and music classrooms, should be adjacent to one another for scheduling and acoustic reasons.
- The new music room should be located near the existing music room; this room should be accessible before/after school.
- There should be acoustic control, especially in the cafeteria and music.
- The media center should function as a student space, and will have adjacent small group workspaces, a separate storage room, and media teaching space.
- The flex lab and media center should be next to one another.
- Additional SpED classrooms should be close to the existing SpED classrooms, if not adjacent. The rooms should provide adequate storage.
- SpED classrooms should support small group activities and confidential conversations.
- The speech and ESL spaces should accommodate small group activities, and be acoustically separate from loud active spaces i.e. gym and music.
- The building should support safe exiting and bus flow for students.



**Knutson** Construction

**Northfield**  
PUBLIC SCHOOLS

# Schematic Design Diagram: Site



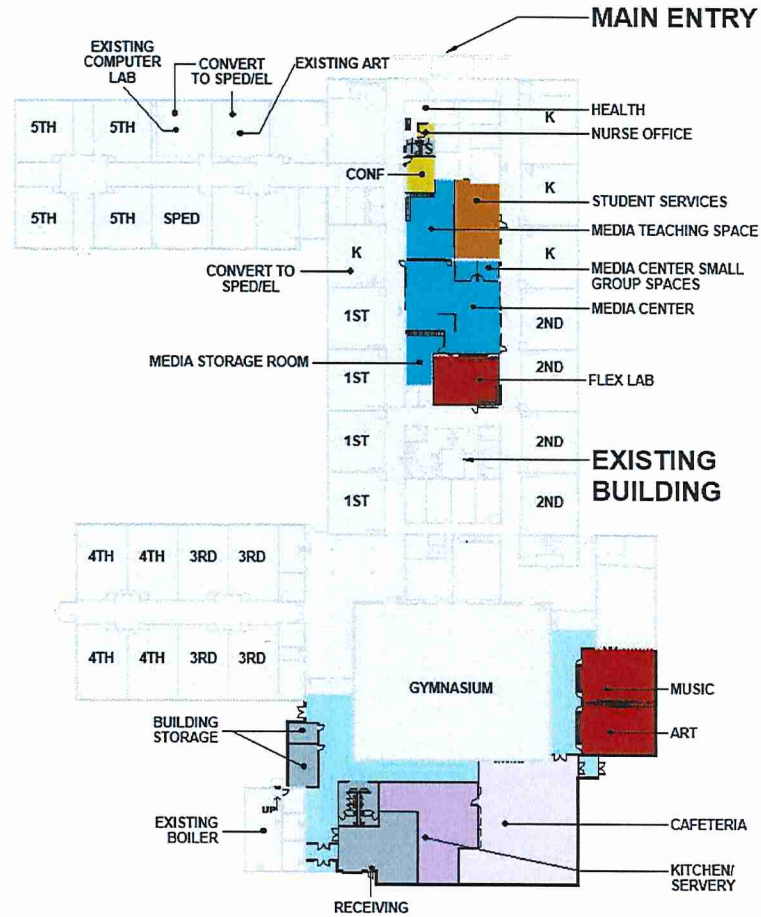


**Knutson** Construction

**Northfield**  
PUBLIC SCHOOLS

- KEY**
- EXISTING
  - ADMIN
  - MEDIA CENTER
  - STUDENT SERVICES
  - SPECIALIST SPACES
  - KITCHEN/SERVERY/CAFETERIA
  - RECEIVING/STORAGE/TOILETS
  - CIRCULATION

# Schematic Design Diagram





# Sibley Elementary User Groups



- Met 1 time to date:  
» May 28-31, 2019

Lori Malecha, ISD #659  
Allison Sweeny, ISD #659  
Dan Warner, ISD #659  
Krista Sorenson, ISD #659  
Becky Gainey, ISD #659  
Peter McGorry, ISD #659  
Scott Sannes, ISD #659  
Ann Hehr, ISD #659  
Mary Kate Maney, ISD #659  
Amy Goerwitz, ISD #659  
Erin Bailey, ISD #659

Pasha Quaas, Parent  
Erica Ness, ISD #659  
Jane Ehlers, ISD #659  
Karleen Sherman, ISD #659  
Susie Puppe, ISD #659  
Matt Hillmann, ISD #659  
Jim Kulseth, ISD #659  
Peg Witt, ISD #659  
Melissa Reed, ISD #659  
Noreen Cooney, ISD #659  
Aimee Gerdesmeier, ISD #659

# Sibley User Groups

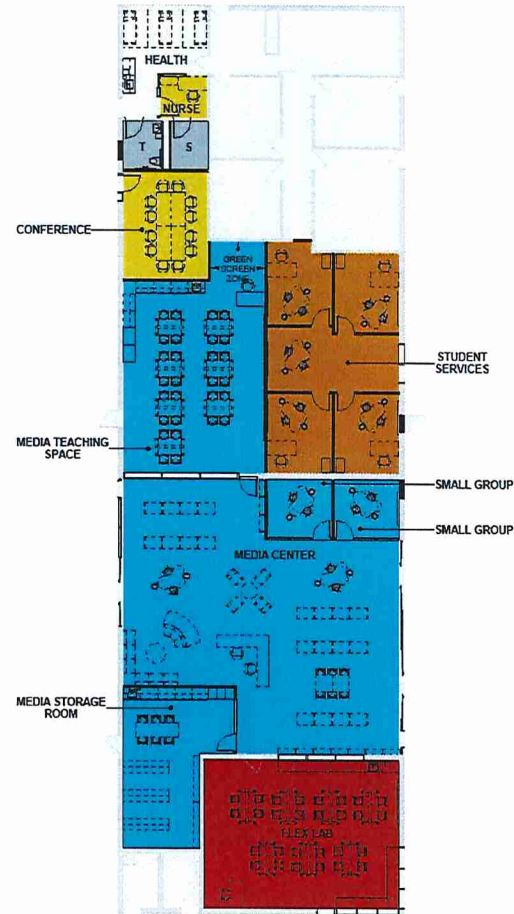
## USER GROUP TEAMS



**Knutson** Construction

**Northfield**  
PUBLIC SCHOOLS

# Design Development Diagram: Interior Renovations



**KEY**

- EXISTING
- ADMIN
- MEDIA CENTER
- STUDENT SERVICES
- SPECIALIST SPACES
- KITCHEN/SERVERY/CAFETERIA
- RECEIVING/STORAGE/TOILETS
- CIRCULATION

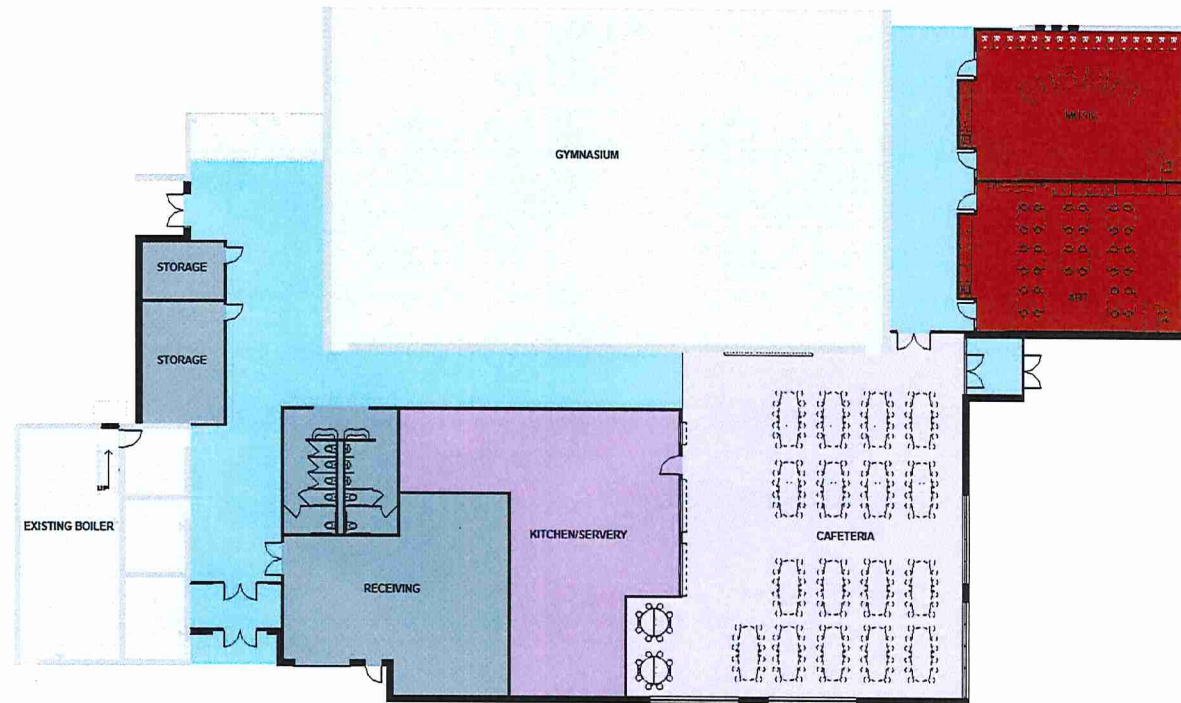




**Knutson** Construction

**Northfield**  
PUBLIC SCHOOLS

# Design Development Diagram: Addition



- KEY**
- EXISTING
  - ADMIN
  - MEDIA CENTER
  - STUDENT SERVICES
  - SPECIALIST SPACES
  - KITCHEN/SERVERY/CAFETERIA
  - RECEIVING/STORAGE/TOILETS
  - CIRCULATION

## Next Steps



### Sibley Elementary:

- June 13<sup>th</sup> – User Group Round 2
- Late Fall – Issue Construction Documents
- End of Summer 2020 – Project Completion



**Thank you to the Core Planning  
Teams and all other participants!**

**Questions?**

							2018-2019						
School and	September	September	September	September	October	November	December	January	February	March	April	May	End of Year
Grade Level	4th	7th	14th	21st	1st	1st	3rd	2nd	1st	1st	2nd	1st	6/7/19
<b>Longfellow</b>													
Early Childhood	84	82	85	87	86	98	110	109	115	126	126	133	138
<b>Total</b>	<b>84</b>	<b>82</b>	<b>85</b>	<b>87</b>	<b>86</b>	<b>98</b>	<b>110</b>	<b>109</b>	<b>115</b>	<b>126</b>	<b>126</b>	<b>133</b>	<b>138</b>
<b>Greenvale Park</b>													
Grade K-2031	58	58	59	60	59	57	57	57	58	59	59	58	58
Grade 1-2030	84	84	83	83	83	83	82	81	80	80	80	80	81
Grade 2-2029	62	62	62	62	62	62	62	61	61	62	61	61	61
Grade 3-2028	81	80	80	79	80	81	80	79	78	79	78	78	78
Grade 4-2027	73	72	72	72	72	74	77	77	79	79	79	79	79
Grade 5-2026	76	75	75	75	75	77	78	77	76	76	74	74	74
<b>Total</b>	<b>434</b>	<b>431</b>	<b>431</b>	<b>431</b>	<b>431</b>	<b>434</b>	<b>436</b>	<b>432</b>	<b>432</b>	<b>435</b>	<b>431</b>	<b>430</b>	<b>431</b>
<b>Sibley</b>													
Grade K-2031	95	95	95	95	95	94	93	93	92	92	92	92	91
Grade 1-2030	97	97	96	96	95	97	96	96	96	96	97	97	95
Grade 2-2029	87	87	87	87	87	87	88	88	87	87	88	87	87
Grade 3-2028	102	103	103	103	103	103	102	102	102	102	104	103	102
Grade 4-2027	91	92	92	92	92	93	92	92	93	93	95	95	95
Grade 5-2026	105	105	105	105	105	104	104	105	105	105	107	106	106
<b>Total</b>	<b>577</b>	<b>579</b>	<b>578</b>	<b>578</b>	<b>577</b>	<b>578</b>	<b>575</b>	<b>576</b>	<b>575</b>	<b>575</b>	<b>583</b>	<b>580</b>	<b>576</b>
<b>Bridgewater</b>													
Grade K-2031	100	95	95	97	97	96	97	97	96	96	96	96	96
Grade 1-2030	94	94	94	94	94	93	92	90	90	91	92	92	92
Grade 2-2029	98	97	97	97	97	97	97	97	98	98	98	99	99
Grade 3-2028	98	99	99	98	98	98	98	98	98	97	98	98	98
Grade 4-2027	116	117	117	117	117	119	120	120	119	120	118	117	117
Grade 5-2026	93	95	95	95	95	94	93	93	94	94	94	94	94
<b>Total</b>	<b>599</b>	<b>597</b>	<b>597</b>	<b>598</b>	<b>598</b>	<b>597</b>	<b>597</b>	<b>595</b>	<b>595</b>	<b>596</b>	<b>596</b>	<b>596</b>	<b>596</b>
<b>Middle School</b>													
Grade 6-2025	342	340	339	339	340	339	339	338	338	339	340	340	339
Grade 7-2024	330	329	329	329	329	331	334	334	336	334	334	331	331
Grade 8-2023	298	298	298	296	296	296	297	296	301	299	299	299	298
St. Dominics	3.5	4	4	4	4	3.5	3.5	3.5	3.5	3.5	3.5	3.5	3.5
<b>Total</b>	<b>973.5</b>	<b>971.0</b>	<b>970.0</b>	<b>968.0</b>	<b>969.0</b>	<b>969.5</b>	<b>973.5</b>	<b>971.5</b>	<b>978.5</b>	<b>975.5</b>	<b>976.5</b>	<b>973.5</b>	<b>971.5</b>
<b>High School</b>													
Grade 9-2022	348	352	352	353	353	354	354	353	353	352	354	351	351
Grade 10-2021	323	358	357	357	356	355	355	354	356	356	354	353	354
Grade 11-2020	361	321	323	322	321	315	312	313	311	310	308	304	304
Grade 12-2019	356	345	344	346	342	339	335	333	333	332	332	328	326
<b>Total</b>	<b>1388</b>	<b>1376</b>	<b>1376</b>	<b>1378</b>	<b>1372</b>	<b>1363</b>	<b>1356</b>	<b>1353</b>	<b>1353</b>	<b>1350</b>	<b>1348</b>	<b>1336</b>	<b>1335</b>
<b>ALC</b>													
Grade 9-2022	2	2	2	2	2	3	3	2	2	2	6	7	8
Grade 10-2021	3	3	6	7	7	7	9	12	12	19	24	27	28
Grade 11-2020	11	15	17	22	22	25	26	26	27	36	43	42	41
Grade 12-2019	43	52	56	60	60	67	71	64	59	69	70	71	73
<b>Total</b>	<b>59</b>	<b>72</b>	<b>81</b>	<b>91</b>	<b>91</b>	<b>102</b>	<b>109</b>	<b>104</b>	<b>100</b>	<b>126</b>	<b>143</b>	<b>147</b>	<b>150</b>
<b>Grand Total</b>	<b>4114.5</b>	<b>4108.0</b>	<b>4118.0</b>	<b>4131.0</b>	<b>4124.0</b>	<b>4141.5</b>	<b>4156.5</b>	<b>4140.5</b>	<b>4148.5</b>	<b>4183.5</b>	<b>4203.5</b>	<b>4195.5</b>	<b>4197.5</b>
<b>Full Time only (excluding EC and Part-time/Independent Study ALC)</b>	<b>4025.0</b>	<b>4007.0</b>	<b>4004.0</b>	<b>4003.0</b>	<b>3996.0</b>	<b>3990.5</b>	<b>3990.5</b>	<b>3980.5</b>	<b>3980.5</b>	<b>3982.5</b>	<b>3961.5</b>	<b>3966.5</b>	<b>3964.5</b>

Longfellow

Early Childhood

Banks	11
Dorey	16
Gross	13
Kremin	15
Kruse	5
O'Connor	4
Roth	8
Schnorr	17
Sorenson	13
Waters	20
Webster	4
Winter	12
<b>** TOTAL</b>	<b>138</b>

Sibley

Grade	Teacher	
K	Born	23
K	Downs	22
K	Heil	23
K	Matson	23
1	Craft	23
1	Sasse	23
1	Sieger	25
1	Swenson	24
2	Baker	22
2	Seeberg	21
2	Soderlund	22
2	Spitzack	22
3	Guggisberg	25
3	Jandro	24
3	Johnson	28
3	Sweeney	25
4	Fox	24
4	Haar	24
4	McManus	22
4	Rud	25
5	Baragary	29
5	Malecha	28
5	Osternann	21
5	Stulken	28
	<b>TOTAL</b>	<b>576</b>

Greenvale Park

K	Flicek	15
K	Hagberg	13
K	Malecha	15
K	Ziemann	15
1	Landry	26
1	Nivala	17
1	Peterson	18
1	Zach	20
2	Amundson	24
2	Bulfer	13
2	Johnson	11
2	Larson	13
3	Alvarez, C	24
3	McLaughlin	18
3	Timerson	18
3	Youngblut	18
4	Clarey	19
4	Dimick	18
4	Garcia	23
4	Hetzel	19
5	Alvarez, R	22
5	Harding	16
5	Sickler	18
5	Spitzack	18
	<b>TOTAL</b>	<b>431</b>

Bridgewater

K	Cade	19
K	Danielson	19
K	Allison	19
K	Haley	19
K	Tran	20
1	Charlton	21
1	Ellerbush	22
1	Hall	22
1	Lanza	27
2	Lane	24
2	Lofquist	26
2	Rubin	23
2	Schwaab	26
3	Larson	27
3	Sickler	24
3	Temple	23
3	Truman	24
4	Holden	24
4	Ryan	23
4	Schuster	24
4	Shepherd	22
4	Swenson	24
5	DeVries	25
5	Duchene	23
5	Kohl	23
5	Rauk	23
	<b>TOTAL</b>	<b>596</b>

Middle School

Grade 6-2025	339
Grade 7-2024	331
Grade 8 (*inc. 7 - 1/2 day)-2023	301.5
<b>TOTAL</b>	<b>971.5</b>

High School

Grade 9-2022	351
Grade 10-2021	354
Grade 11-2020	304
Grade 12-2019	326
<b>TOTAL</b>	<b>1335</b>

\*7 (3.5) St. Dominic's students attend 1/2 day

Early Childhood**	138
Kindergarten-2031	245
Grade 1-2030	268
Grade 2-2029	247
Grade 3-2028	278
Grade 4-2027	291
Grade 5-2026	274
<b>Total K-5</b>	<b>1741</b>
<b>Total Middle School</b>	<b>971.5</b>
<b>Total High School</b>	<b>1335</b>
<b>GRAND TOTAL</b>	<b>4047.5</b>
ALC 9-12	150
<b>GRAND TOTAL with ALC</b>	<b>4197.5</b>

ALC	F/T	**P/T	**I/S	TOTAL
Grade 9-2021	4	0	4	8
Grade 10-2020	8	0	20	28
Grade 11-2019	17	0	24	41
Grade 12-2018	25	0	48	73
<b>TOTAL</b>	<b>54</b>	<b>0</b>	<b>96</b>	<b>150</b>

Full Time only (excluding EC and Part-time/Independent Study ALC)	3964.5
---	--------